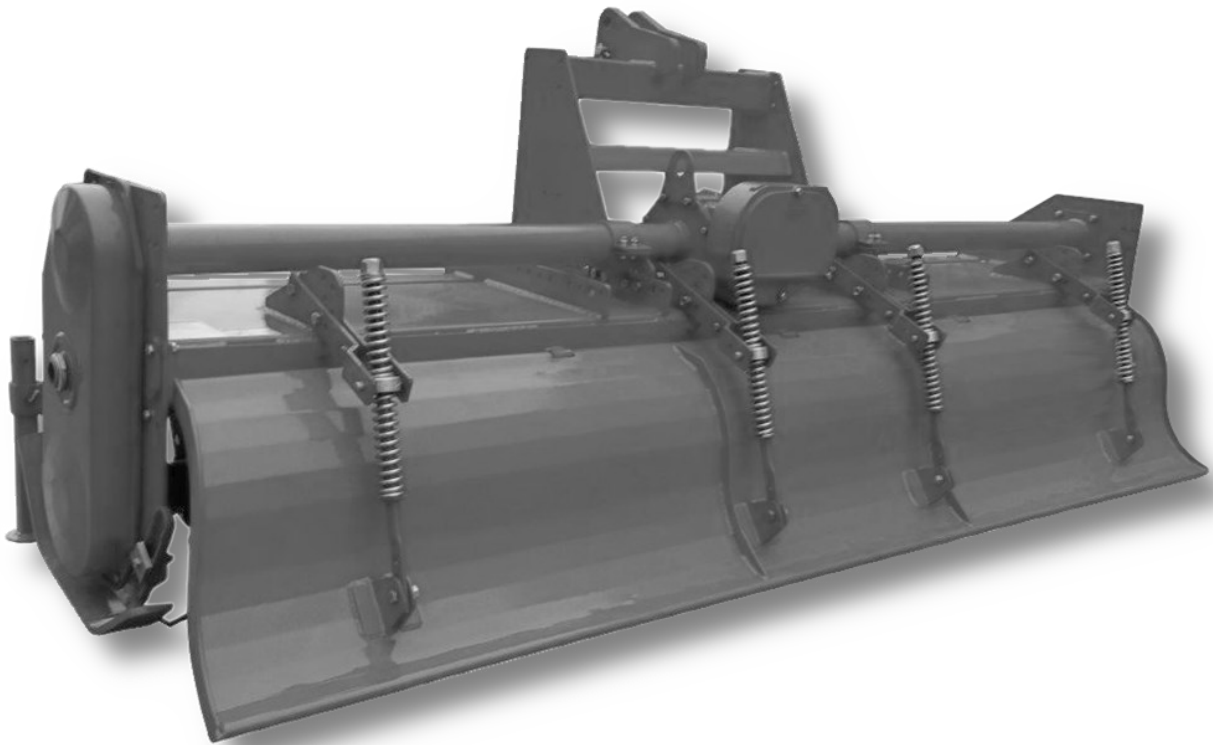




Rotary Tiller
BXV & CXT Series



Operator's Manual

Page left blank intentionally

TO THE DEALER:

Assembly and proper installation of this product is the responsibility of the LMC dealer. Read manual instructions and safety rules. Make sure all items on the Dealer's Pre-Delivery and Delivery Check Lists in the Owner's/Operator's Manual are completed before releasing equipment to the owner.

TO THE OWNER:

Read this manual before operating your LMC equipment. The information presented will prepare you to do a better and safer job. Keep this manual handy for ready reference. Require all operators to read this manual carefully and become acquainted with all the adjustment and operating procedures before attempting to operate. Replacement manuals can be obtained from your selling dealer. The equipment you have purchased has been carefully engineered and manufactured to provide dependable and satisfactory use. Like all mechanical products, it will require cleaning and upkeep. Lubricate the unit as specified. Observe all safety information in this manual and safety decals on the equipment. For service, your authorized LMC dealer has trained mechanics, genuine LMC service parts, and the necessary tools and equipment to handle all your needs. Use only genuine LMC service parts. Substitute parts will void the warranty and may not meet standards required for safe and satisfactory operation.

Record your implement model and serial number in the space provide below. Your dealer will need this information to give you prompt, efficient service.

Model Number: _____

Serial Number: _____

Date Purchased: _____

Table of Contents

| | |
|--|-------|
| Introduction | 5 |
| Technical Specifications | 5 |
| Safety | 6 |
| Safety Signal Words | 6 |
| General Safety Guidelines | 7 |
| Safety Decal Care | 7 |
| Before Operation | 8 |
| During Operation | 9 |
| Highway And Transport Operations | 10-11 |
| Operating Instructions..... | 12-15 |
| Maintenance | 16 |
| Torque Specifications | 17 |
| Parts Breakdown | 20-53 |
| Warranty | 54 |

Introduction

Thank you for purchasing your LMC Rotary Tiller. The CXT Series is specifically designed to tractors in the 60-130 horse power range.

Technical Specifications

- Gear drive transmission, 6 Blades per flange, PTO with slip-clutch protection, Solid A-frame, 6" Tilling depth, Powder coat paint

| | CXT-086 | CXT-095 | CXT-104 | CXT-112 | CXT-121 |
|-------------------|----------------|----------------|----------------|----------------|----------------|
| Weight | 1636 lbs. | 1762 lbs. | 1876 lbs. | 2081 lbs. | 2115 lbs. |
| Working width | 86" | 95" | 104" | 112" | 121" |
| Blades per flange | 6 | 6 | 6 | 6 | 6 |
| HP | 60-130 | 70-130 | 75-130 | 80-130 | 85-130 |
| PTO driveline | Series 4 S/C | Series 4 S/C | Series 4 S/C | Series 4 S/C | Series 4 S/C |

Important Safety Information

Safety

It is important that you read the entire manual and to become familiar with this product before you begin using it. This product is designed for certain applications only. The manufacturer cannot be responsible for issues arising from modification. We strongly recommend this product not be modified and /or used for any application other than that for which it is designed. If you have any questions relative to a particular application, DO NOT use the product until you have first contacted us to determine if it can or should be performed on the product.

Read and understand this manual and all safety signs before operating and maintaining . Review the safety instructions and precautions annually.

Safety Signal Words

TAKE NOTE! This safety alert symbol found though out this manual is used to call you attention to instructions involving you personal safety and the safety of others. Failure to follow these instructions can result in injury or death.



**This symbol means:
Attention!
Become alert!
Your safety is involved!**

Note the use of the signal words, DANGER, WARNING and CAUTION with the safety messages. The appropriate signal word for each has been selected using the following guidelines:



DANGER: Indicates an imminently hazardous situation that, if not avoided, will result in death or serious injury. This signal word is to be limited to the most extreme situations typically for machine components which, for functional purposes, cannot be guarded.



WARNING: Indicates a potentially hazardous situation that, if not avoided, could result in death or serious injury, and includes hazards that are exposed when guards are removed. It may also be used to alert against unsafe practices.



CAUTION: Indicates a potentially hazardous situation that, if not avoided, may result in minor or moderate injury. It may also be used to alert against unsafe practices.

Important Safety Information

General Safety Guidelines

Safety of the operator is one of the main concerns in designing and developing a new piece of equipment. Designers and manufacturers build in as many safety features as possible. However, every year many accidents occur which could have been avoided by a few seconds of thought and a more careful approach to handling equipment. You, the operator, can avoid many accidents by observing the following precautions in this section. To avoid personal injury, study the following precautions and insist those working with you, or for you, follow them.

Replace any DANGER, WARNING, CAUTION or instruction safety decal that is not readable or is missing. Location of such decals are indicated in this manual. Do not attempt to operate this equipment under the influence of drugs or alcohol.

Review the safety instructions with all users annually.

This equipment is dangerous to children and persons unfamiliar with its operation. The operator should be a responsible adult familiar with farm machinery and trained in this equipment's operations. **Do not allow persons to operate or assemble this unit until they have read this manual and have developed a thorough understanding of the safety precautions and of how it works.**

To prevent injury of death, use a tractor equipped with a Roll Over Protection System (ROPS). Do not paint over, remove or deface any signs or warning decals on your equipment. Observe all safety signs and practice the instructions on them.

Never exceed the limits of a piece of machinery. If its ability to do a job, or to do so safely, is in question - **Don't try it!**



Safety Decal Care

- Keep safety signs clean and legible at all times.
- Replace safety signs that are missing or have become illegible.
- Replaced parts that displayed a safety sign should also display the current safety sign
- Safety signs are available from your Distributor or Dealer Parts Department or the factory.

Important Safety Information

How to install Safety Signs:

- Be sure that the installation area is clean and dry.
- Decide on the exact position before you remove the backing paper.
- Remove the smallest portion of the split backing paper.
- Align the decal over the specified area and carefully press the small portion with the exposed sticky backing in place.
- Slowly peel back the remaining paper and carefully smooth the remaining portion of the decal in place.
- Small air pockets can be pierced with a pin and smoothed out using the piece of decal backing paper.



Before Operation

- Carefully study and understand this manual.
- Do not wear loose-fitting clothing, which may catch in moving parts.
- Always wear protective clothing and substantial shoes.
- Assure that all tires are inflated evenly.
- Give the unit a visual inspection for any loose bolts, worn parts or cracked welds, and make necessary repairs. Follow the maintenance safety instructions included with this manual.
- Be sure that there are no tools lying on or in the equipment.
- Do not use the unit until you are sure that the area is clear, especially of children and animals.
- Don't hurry the learning process or take the unit for granted. Ease into it and become familiar with your new equipment.
- Practice operation of your equipment and its attachments. Completely familiarize yourself and other operators with its operation before using.
- Use a tractor equipped with a Roll Over Protection System (ROPS) and fasten your seat belt prior to starting engine.
- The manufacturer does not recommend usage of tractor with ROPS removed.
- Move tractor wheels to the widest recommended settings to increase stability.
- Securely attach to towing unit. Use a high strength, appropriately sized hitch pin with a mechanical retainer and attach safety chain.
- Do not allow anyone to stand between the tongue or hitch and the towing vehicle when backing up to the equipment.
- Do not use the unit until you are sure that the area is clear, especially of children and animals.

Important Safety Information



During Operation

- Children should not be allowed on the product.
- Clear the area of small children and bystanders before moving the feeder.
- If using a towing unit, securely attach feeder by using a hardened 3/4" pin, a metal retainer, and safety chains if required. Shift towing unit to a lower gear before going down steep downgrades, thus using the engine as a retarding force. Keep towing vehicle in gear at all times. Slow down for corners and rough terrain.
- Make sure you are in compliance with all local and state regulations regarding transporting equipment on public roads and highways. Lights and slow moving signs must be clean and visible by overtaking or oncoming traffic when feeder is transported.
- Beware of bystanders, **particularly children!** Always look around to make sure that it is safe to start the engine of the towing vehicle or move the unit. This is particularly important with higher noise levels and quiet cabs, as you may not hear people shouting.
- **NO PASSENGERS ALLOWED!** Do not carry passengers anywhere on, or in, the tractor or equipment, except as required for operation.
- Keep hands and clothing clear of moving parts.
- Do not clean, lubricate or adjust your equipment while it is moving.
- When halting operation, even periodically, set the tractor or towing vehicle brakes, disengage the PTO, shut off the engine and **remove the ignition key.**
- Be especially observant of the operating area and terrain. Watch for holes, rocks or hidden hazards. Always inspect the area prior to operation.
- **DO NOT** operate near the edge of drop-offs or banks.
- **DO NOT** operate on steep slopes as overturns may result.
- Operate up and down (not across) intermediate slopes. Avoid sudden starts and stops.

Important Safety Information



Highway and Transport Operations

- Adopt safe driving practices.
- Keep the brake pedals latched together at all times. **Never use independent braking with machine in tow as loss of control and/or upset of unit can result.**
- Always drive at a safe speed relative to local conditions and ensure that your speed is low enough for an emergency stop to be safe and secure. Keep speed at a minimum.
- Reduce speed prior to turns to avoid the risk of overturning.
- Avoid sudden uphill turns on steep slopes.
- Always keep the tractor or towing vehicle in gear to provide engine braking when going downhill. Do not coast.
- Do not drink and drive!
- Comply with state and local laws governing highway safety and movement of farm machinery on public roads.
- Use approved accessory lighting flags and necessary warning devices to protect operators of other vehicles on the highway during daylight and nighttime transport. Various safety lights and devices are available from your dealer.
- The use of flashing amber lights is acceptable in most localities. However, some localities prohibit their use. Local laws should be checked for all highway and marking requirements.
- When driving the tractor and equipment on the road or highway under 40 kph (20 mph) at night or during the day, use the amber warning lights and a slow moving vehicle (SMV) identification emblem.
- Plan your route to avoid heavy traffic.
- Be a safe and courteous driver. Always yield to oncoming traffic in all situations, including narrow bridges, intersections, etc.
- Be observant of bridge loading ratings. Do not cross bridges rated at lower than the gross weight at which you are operating.
- Watch for obstructions overhead and to the side while transporting.
- Always operate in a position to provide maximum visibility at all times. Make allowances for increased length and weight of the equipment when making turns, stopping the unit, etc.
- Pick the most level route when transporting across fields. Avoid the edges of ditches or gullies and steep hillsides.
- Be extra careful when working in inclines.

Important Safety Information



Highway and Transport Operations

- Maneuver the tractor or towing vehicle at safe speeds.
- Avoid overhead wires or other obstacles. Contact with overhead lines could cause serious injury or death.
- Avoid loose fill, rocks and holes, they can be dangerous for equipment operation or movement.
- Allow for unit length when making turns,
- Operate the towing vehicle from the operator's seat only.
- Never stand alongside of unit with engine running or attempt to start engine and/or operate machine while standing alongside of unit.
- Never leave running equipment attachments unattended.
- As a precaution, always recheck the hardware on equipment following every 100 hours of operation. Correct all problems. Follow the maintenance safety procedures.

Operating Instructions

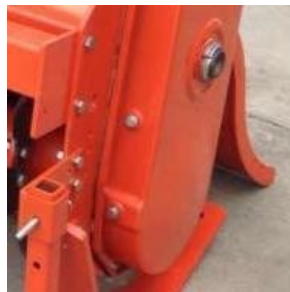


Before attaching the rotary tiller to the tractor, check the unit to ensure there is oil in the top and side gearbox. See Maintenance section for lubricant specifications. Before beginning operation, check oil and grease points.

Note: Gearboxes are shipped with high performance gear grease, add indicated lubricants to specified levels. It is okay to use variable viscosity gear oils.

Oil Level:

- Center Gearbox: Level indicated on dipstick (SAE 90)
Side gearbox drive: Fill to oil drain plug on lower front of cover (SAE 140)
Right rotor bearing: Grease if cap has grease nipple. Otherwise fill to side drain plug. (SAE 90 or SAE 140)
- Grease: PTO shaft cross and bearings



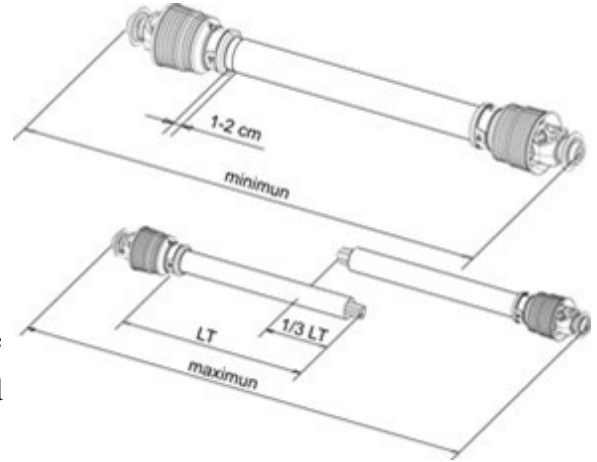
Attaching to the tractor

1. With the Rotary Tiller on a level surface, back the Cat. 1 tractor so the tractor lift arms are even with the unit's lower hitch pins. Lower or raise the tractor hitch arms until the 7/8" bushing in the arm is inside the clevis of lower hitch points. Be sure nothing is between the tractor and the tiller before backing up.
2. Insert the lower hitch pin through the lower hitch blocks and the tractor arm. The YCT series tillers have adjustable lower hitch blocks that can be slide to facilitate usage on larger tractors.
3. Secure the lift arm in place by using a 7/16" lynch pin or other fastener.
4. Repeat with the other arm.
5. Connect the driveline to the tractor's PTO output shaft. Secure it in place.
6. Connect the tractor top link to the upper hitch point of the rotary tiller.
7. Start the tractor and slowly raise the tiller. Check for drawbar interference. Be sure that the PTO driveline does not bottom out when lifting the machine to its maximum height. If it does appear that it could bottom out, it is necessary to shorten the PTO driveline. (See Shortening a PTO Driveline section). Ensure that in the working position there is an overlap of a minimum of 1/3 the length of each profile.

Operating Instructions

Shortening a PTO Driveline

1. With the implement attached to the tractor's three point hitch, and the PTO driveline not installed, separate the PTO driveline. Attach the implement end to the implement and the other end to the tractor PTO input shaft.
2. Raise the implement by using the tractor's hydraulic 3-point hitch to its maximum lift height.
3. Hold the half shafts next to each other and mark them so each end is approximately 1/2" from hitting the end of the telescopic profiles.
4. Shorten the inner and out guard tubes equally.
5. Shorten the inner and outer profiles by the same length as the guard tubes. Using a rat tail file, round off all sharp edges and burrs. Grease the telescopic profile generously before



Do not shorten too much, the proper overlap is a minimum of 1/3 the length of each profile.

reassembling.

Caution: Slip Clutches may become hot. Do Not Touch. Keep the slip clutch area clear of a material that may catch fire. Slip clutches have adjustable torque settings. The torque setting varies with the different compression of each spring. All the springs should have an equal amount of compression.

Important: Do not over-tighten the compression nuts as this may impair performance or cause premature wearing of the slip clutch.

Slip clutch adjustments

Slip clutch must be adjusted before first use or after a storage period.

1. Using a marker, scribe a line across the exposed edges of the clutch plate and friction discs.
2. Back off compression nuts to free friction discs by turning each nut **exactly** 2 revolutions.
3. Start the tractor and run the driveline at a low idle to slip the friction discs. This will remove the dirt, corrosion and surface floss from the clutch plate faces.
4. Disengage PTO, shut down tractor and wait for all components to come to a complete stop.
5. Inspect the clutch and ensure that the scribed markings on the disc and plates have changed position. If any two marks are still aligned, this is an indication that these discs have not slipped. It may be necessary to completely disassemble the clutch to free them up.
6. After ensuring all discs are free, tighten the compression nuts, uniformly, **exactly** 2 revolutions to reset the clutch original pressure.

Operating Instructions

Working Depth Adjustment

The working depth is controlled by raising or lowering the side skids. If the skids are raised, the working depth increases. By lowering the skids, the tilling depth will decrease.

Tailgate adjustment

Position the tailgate to its desired opening by fitting the bolts into the appropriate holes of the adjustment flange located on the top of the main frame. To adjust the degree of tension, tighten or loosen up on the 24mm nut on the top of the spring support rod.

Multi-Speed Gearbox

On certain models, the tiller will come standard with a multi-speed gearbox to allow rotor speed changes. This is particularly useful on uneven ground so as the tractor speed can maintain a constant ground speed and rotor speed to adapt to different soil conditions.

To change the rotor speed, do the following:

1. Ensure the gearbox is not too hot to work safely without burning your hands.
2. Tilt the tiller forward to prevent excessive oil from coming out of the back cover.
3. Unscrew the bolt holding the rear cover of the gearbox.
4. Adjust the gears inside the gearbox to obtain the desired speed.
5. Replace cover and tighten bolts.

IMPORTANT: Make sure the spacers located behind the gears do not fall into the gearbox! If this happens damage to the gearbox or gears can occur.

| BXV | | | | CXT | | | |
|-------|-----------|------------|-------------|-------|-----------|------------|-------------|
| INPUT | Left Gear | Right Gear | Rotor Speed | INPUT | Left Gear | Right Gear | Rotor Speed |
| 540 | 22 | 16 | 140 | 540 | 23 | 17 | 143 |
| 540 | 20 | 18 | 174 | 540 | 21 | 19 | 175 |
| 540 | 18 | 20 | 213 | 540 | 19 | 21 | 214 |
| 540 | 16 | 22 | 266 | 540 | 17 | 23 | 262 |

Operating Instructions

Start up

After making the necessary adjustments, lower the rotary tiller until the blades are a couple of inches from the ground. Engage the PTO and slowly lower the tiller to begin working.

Removal and Storage

1. After finishing, remove the rotary tiller from the tractor.
 2. Put the PTO driveline in a safe location so it will not become damaged.
 3. Clean and dry the equipment.
 4. Replace any damaged or worn parts.
 5. Check all bolts and nuts for tightness.
 6. Lubricate and protect the machine from the elements.
- Following operation, or when unhitching, stop the tractor or towing vehicle, set the brakes,



Following Operation

disengage the PTO and all power drives, shut off the engine and **remove the ignition keys.**

- Store the unit in an area away from human activity.
- Do not park equipment where it will be exposed to livestock for long periods of time.
Damage and livestock injury could result.
- Do not permit children to play on or around the stored unit.
- Make sure all parked machines are on a hard, level surface and engage all safety devices.
- Wheel chocks may be needed to prevent unit from rolling.

Operating Instructions



Performing Maintenance

- Good maintenance is your responsibility. Poor maintenance is an invitation to trouble.
- Make sure there is plenty of ventilation. Never operate the engine of the towing vehicle in a closed building. The exhaust fumes may cause asphyxiation.
- Be certain all moving parts on attachments have come to a complete stop before attempting to perform maintenance.
- Always use the proper tools or equipment for the job at hand.
- Use extreme caution when making adjustments.
- Never replace hex bolts with less than grade five bolts unless otherwise specified.
- After servicing, be sure all tools, parts and service equipment are removed.
- Where replacement parts are necessary for periodic maintenance and servicing, genuine factory replacement parts must be used to restore your equipment to original specifications. The manufacturer will not claim responsibility for use of unapproved parts and/or accessories and other damages as a result of their use.
- If equipment has been altered in any way from original design, the manufacturer does not accept any liability for injury or warranty.

Maintenance Schedule




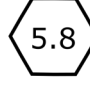
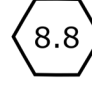
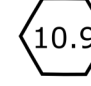
| | |
|------------------|---|
| 8 hours | Grease the Rotor support (GP grease) Grease PTO shaft cross & bearings (GP grease) Check Hardware for tightness |
| 16 hours | Check oil level in center gearbox (90wt) Check oil level in side gearbox (140wt) Check Hardware for tightness |
| 200 hours | Replace oil in center gearbox (90wt) Replace oil in side gearbox (140wt) Check Hardware for tightness |

Replacing Blades

In order for the tiller to perform optimally, make sure the tiller blades are in good working condition and their bolts and nuts tight. Always replace the blades with the bolt head against the blade and the washer and nut on the flange side to help prevent the blades from loosening. When several blades are to be replaced, replace them one blade at a time in order to maintain the scroll pattern on the rotor.

Note: To determine Left or Right Blades, hold the blade by the bolt hole end and the cutting edge facing downward. If the blade curves to the left it is a left-hand blade, curving to the right indicates a right-hand blade.

Torque Specifications

| Torque Specifications for Common Bolt Sizes | | | | | | | | | | | | | | | |
|---|--------------|---|-------|---|-------|---|-------|--------------------|--------------|---|-------|---|-------|---|-------|
| Inches | | Bolt Head Identification | | | | | | Metric | | Bolt Head Identification | | | | | |
| | |  | |  | |  | | | |  | |  | |  | |
| Bolt size (inches) | Thread pitch | Grade 2 | | Grade 5 | | Grade 8 | | Bolt size (metric) | Thread pitch | Class 5.8 | | Class 8.8 | | Class 10.9 | |
| | | N.m | ft-lb | N.m | ft-lb | N.m | ft-lb | | | N.m | ft-lb | N.m | ft-lb | N.m | ft-lb |
| 1/4" | 20 | 7 | 5 | 11 | 8 | 16 | 12 | M5 | 0.08 | 4 | 3 | 6 | 4 | 9 | 7 |
| 1/4" | 28 | 8 | 6 | 13 | 10 | 19 | 14 | M6 | 1 | 6 | 4 | 10 | 7 | 15 | 11 |
| 5/16" | 18 | 15 | 11 | 24 | 17 | 33 | 25 | M8 | 1.25 | 16 | 12 | 25 | 18 | 36 | 27 |
| 5/16" | 24 | 17 | 13 | 26 | 19 | 37 | 27 | M8 | 1 | 17 | 13 | 26 | 19 | 38 | 28 |
| 3/8" | 16 | 27 | 20 | 42 | 31 | 59 | 44 | M10 | 1.5 | 31 | 23 | 48 | 35 | 71 | 52 |
| 3/8" | 24 | 31 | 23 | 47 | 35 | 67 | 49 | M10 | 1.25 | 33 | 24 | 51 | 38 | 75 | 55 |
| 7/16" | 14 | 43 | 32 | 67 | 49 | 95 | 70 | M10 | 1 | 35 | 26 | 53 | 39 | 78 | 58 |
| 7/16" | 20 | 48 | 36 | 75 | 55 | 106 | 78 | M12 | 1.75 | 54 | 40 | 84 | 62 | 123 | 91 |
| 1/2" | 13 | 66 | 48 | 102 | 75 | 144 | 106 | M12 | 1.5 | 56 | 41 | 87 | 64 | 128 | 94 |
| 1/2" | 20 | 75 | 55 | 115 | 85 | 163 | 120 | M12 | 1.25 | 59 | 44 | 90 | 66 | 133 | 98 |
| 9/16" | 12 | 95 | 70 | 147 | 109 | 208 | 154 | M14 | 2 | 84 | 62 | 133 | 98 | 195 | 144 |
| 9/16" | 18 | 106 | 79 | 164 | 121 | 232 | 171 | M14 | 1.5 | 94 | 69 | 142 | 105 | 209 | 154 |
| 5/8" | 11 | 132 | 97 | 203 | 150 | 287 | 212 | M16 | 2 | 131 | 97 | 206 | 152 | 302 | 223 |
| 5/8" | 18 | 149 | 110 | 230 | 170 | 325 | 240 | M16 | 1.5 | 141 | 104 | 218 | 161 | 320 | 236 |
| 3/4" | 10 | 233 | 172 | 361 | 266 | 509 | 376 | M18 | 2.5 | 181 | 133 | 295 | 218 | 421 | 310 |
| 3/4" | 16 | 261 | 192 | 403 | 297 | 569 | 420 | M18 | 2 | 196 | 145 | 311 | 229 | 443 | 327 |
| 7/8" | 9 | 226 | 167 | 582 | 430 | 822 | 606 | M18 | 1.5 | 203 | 150 | 327 | 241 | 465 | 343 |
| 7/8" | 14 | 249 | 184 | 642 | 473 | 906 | 668 | M20 | 2.5 | 256 | 189 | 415 | 306 | 592 | 437 |
| 1" | 8 | 339 | 250 | 873 | 644 | 1232 | 909 | M20 | 1.5 | 288 | 212 | 454 | 335 | 646 | 476 |
| 1" | 12 | 371 | 273 | 955 | 704 | 1348 | 995 | M22 | 2.5 | 344 | 254 | 567 | 418 | 807 | 595 |
| 1-1/8" | 7 | 480 | 354 | 1077 | 794 | 1746 | 1288 | M22 | 1.5 | 381 | 281 | 613 | 452 | 873 | 644 |
| 1-1/8" | 12 | 539 | 397 | 1208 | 891 | 1958 | 1445 | M24 | 3 | 444 | 327 | 714 | 526 | 1017 | 750 |
| 1-1/4" | 7 | 677 | 500 | 1519 | 1120 | 2463 | 1817 | M24 | 2 | 488 | 360 | 769 | 567 | 1095 | 808 |
| 1-1/4" | 12 | 750 | 553 | 1682 | 1241 | 2728 | 2012 | M27 | 3 | 656 | 484 | 1050 | 774 | 1496 | 1103 |
| 1-3/8" | 6 | 888 | 655 | 1992 | 1469 | 3230 | 2382 | M27 | 2 | 719 | 530 | 1119 | 825 | 1594 | 1176 |
| 1-3/8" | 12 | 1011 | 746 | 2268 | 1673 | 3677 | 2712 | M30 | 3.5 | 906 | 668 | 1420 | 1047 | 2033 | 1499 |
| 1-1/2" | 6 | 1179 | 869 | 2643 | 1949 | 4286 | 3161 | M30 | 2 | 1000 | 738 | 1600 | 1180 | 2250 | 1659 |
| 1-1/2" | 12 | 1326 | 978 | 2974 | 2194 | 4823 | 3557 | M36 | 4 | 1534 | 1131 | 2482 | 1830 | 3535 | 2607 |

Notes:

This chart is an approximate estimate of torque values.

Always tighten hardware to these values unless a different torque value or tightening procedure is listed for a specific application.

Fasteners must always be replaced with the same grade as specified in the manual.

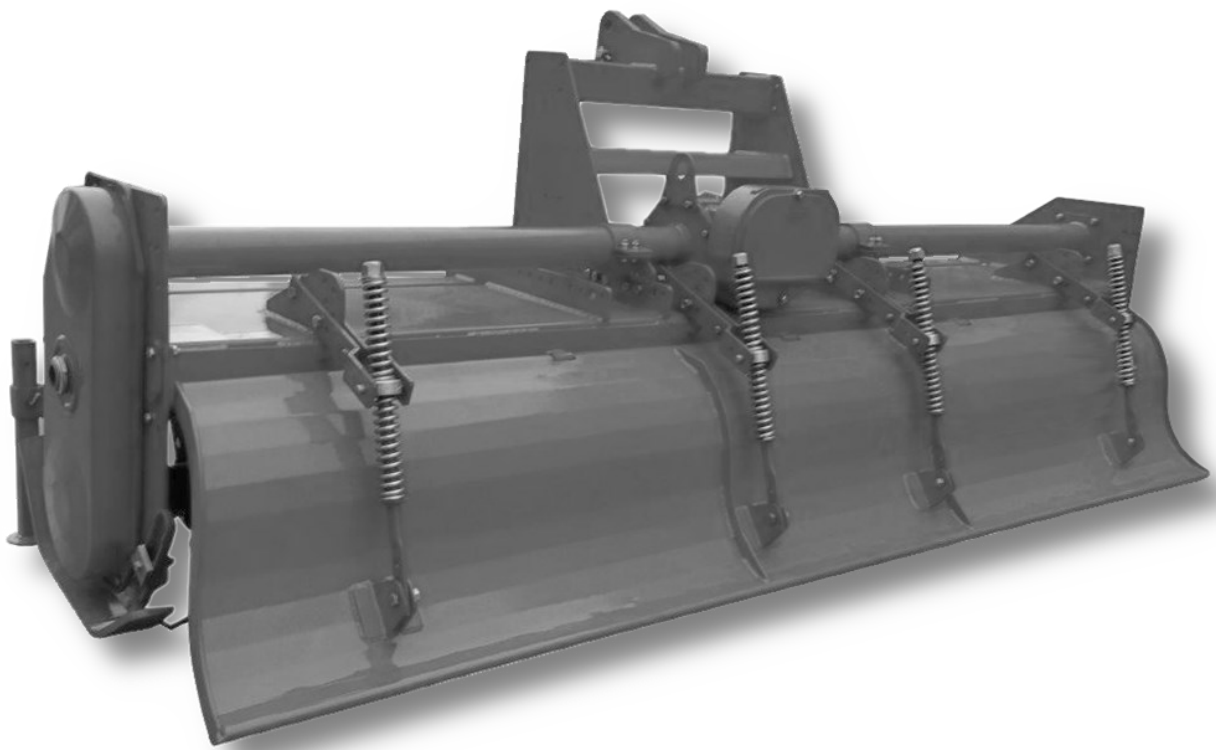
Always use the proper tool for tightening hardware: SAE for SAE hardware and Metric for Metric hardware.

Make sure that fastener threads are clean and that you properly start thread engagement.

Page left blank intentionally

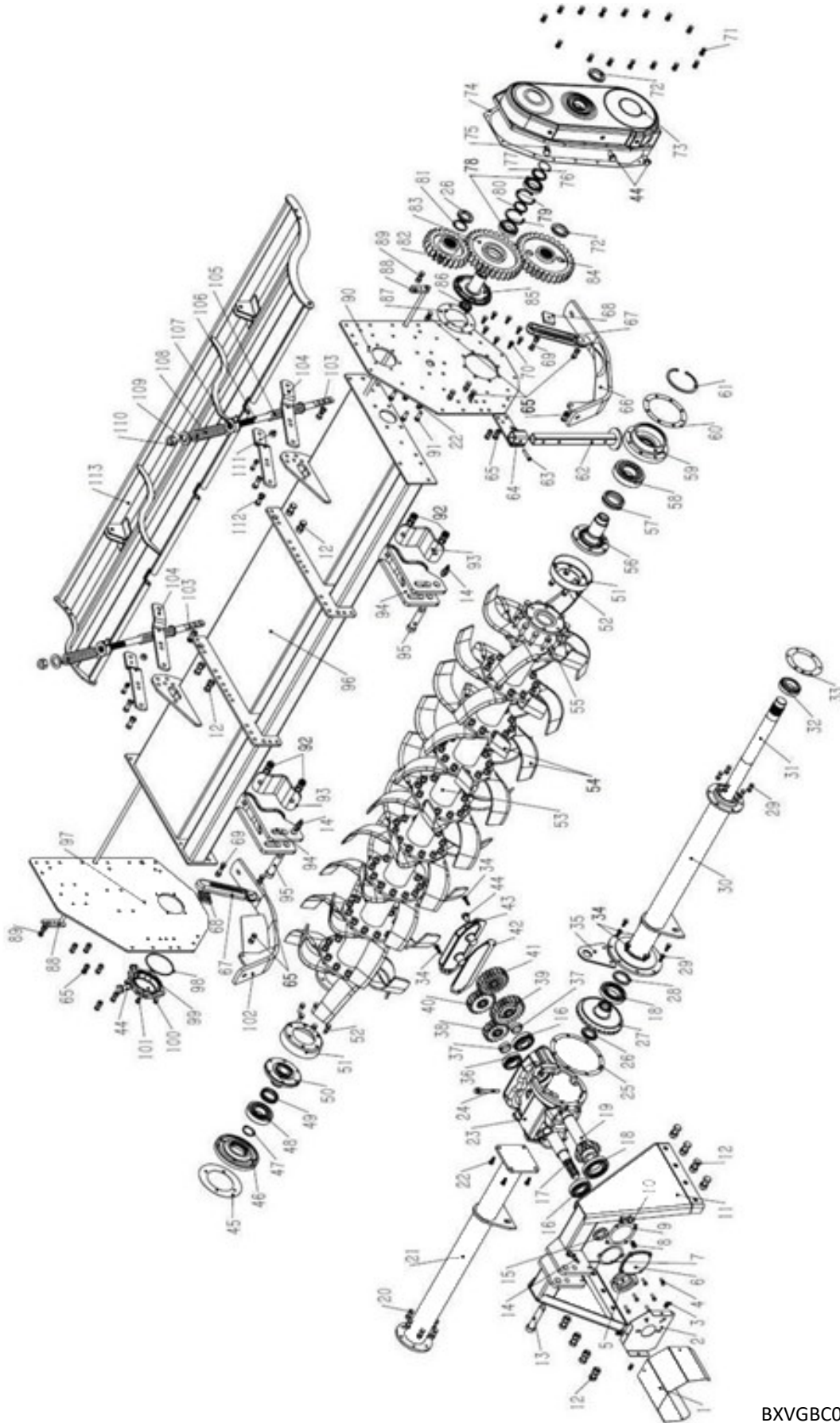


Rotary Tiller
BXV & CXT Series



Parts Manual

BXV-075, BXV-085, BXV-094, BXV-104

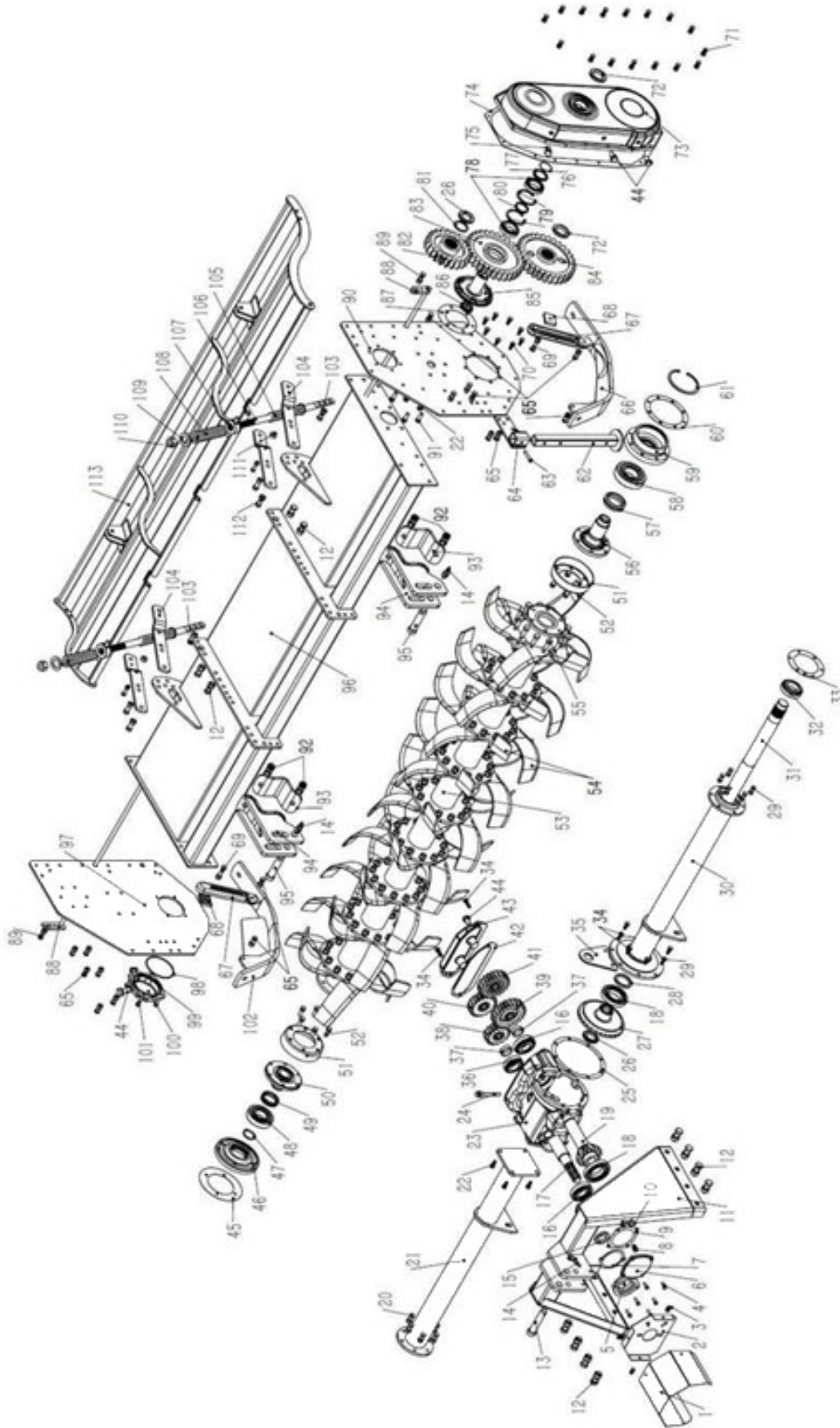


BXVGC001 Gearbox Complete

BXV-075, BXV-085, BXV-094, BXV-104

| Item | Part # | Description | Qty. |
|------|------------|--|------|
| 1 | BV0317 | PTO shield | 1 |
| 2 | BV0321 | PTO shield support | 1 |
| 3 | BM812516 | Bolt- M8 x 1.25 x 16 | 3 |
| 4 | BM1012530 | Bolt- M10 x 1.25 x 30 | 6 |
| 5 | BV0320 | Bearing support | 1 |
| 6 | BV0315 | Gearbox cap | 1 |
| 7 | BV0318 | Gasket - Input Shaft- M107 x 91 x 1 | 1 |
| 8 | BM1012520 | Bolt- M10 x 1.25 x 20 | 1 |
| 9 | BV0314 | Gasket Bearing Cover- M150 x 112 x 1 | 1 |
| 10 | BV0408 | Spacer- Right Rotor Support- M63 x 50 x 4 | 1 |
| 11 | BV0101 | A Frame | 1 |
| 12 | BM161540 | Bolt- M16 x 1.5 x 40 | 12 |
| 13 | BV0103 | Top Hitch Pin | 1 |
| 14 | SB100756 | Lynch Pin- M10mm | 3 |
| 15 | OS406210 | Oil Seal- M40 x 62 x 10 | 1 |
| 16 | B30308JR | Bearing- 30308JR | 2 |
| 17 | BV0319 | Input Shaft | 1 |
| 18 | B30212JR | Bearing- 30212JR | 2 |
| 19 | BV0316 | Pinion Shaft | 1 |
| 20 | BM1012535 | Bolt- M10 x 1.25 x 35 | 6 |
| 21 | BV0301-75 | Gearbox Support Tube BXV-076 | - |
| | BV0301-85 | Gearbox Support Tube BXV-086 | - |
| | BV0301-94 | Gearbox Support Tube BXV-094 | - |
| | BV0301-104 | Gearbox Support Tube BXV-104 | - |
| 22 | BM1212530 | Bolt- M12 x 1.25 x 30 | 5 |
| 23 | BV0313 | Housing -Gearbox | 1 |
| 24 | BV0323 | Dip Stick | 1 |
| 25 | BV0309 | Gasket - Center Gearbox Left Side 240 x 206 x0.5 | 1 |
| 26 | NM4515 | Nut 45 x 1.5 | 2 |
| 27 | BV0324 | Ring Gear | 1 |
| 28 | OS607508 | Oil Seal- M60 x 75 x 8 | 1 |
| 29 | BM1012530 | Bolt- M10 x 1.25 x 30 | 12 |
| 30 | BV0310-75 | Gearbox Shaft Tube Housing - BXV-076 | - |
| | BV0310-86 | Gearbox Shaft Tube Housing - BXV-086 | - |
| | BV0310-94 | Gearbox Shaft Tube Housing - BXV-094 | - |
| | BV0310-104 | Gearbox Shaft Tube Housing - BXV-104 | - |

BXV-075, BXV-085, BXV-094, BXV-104

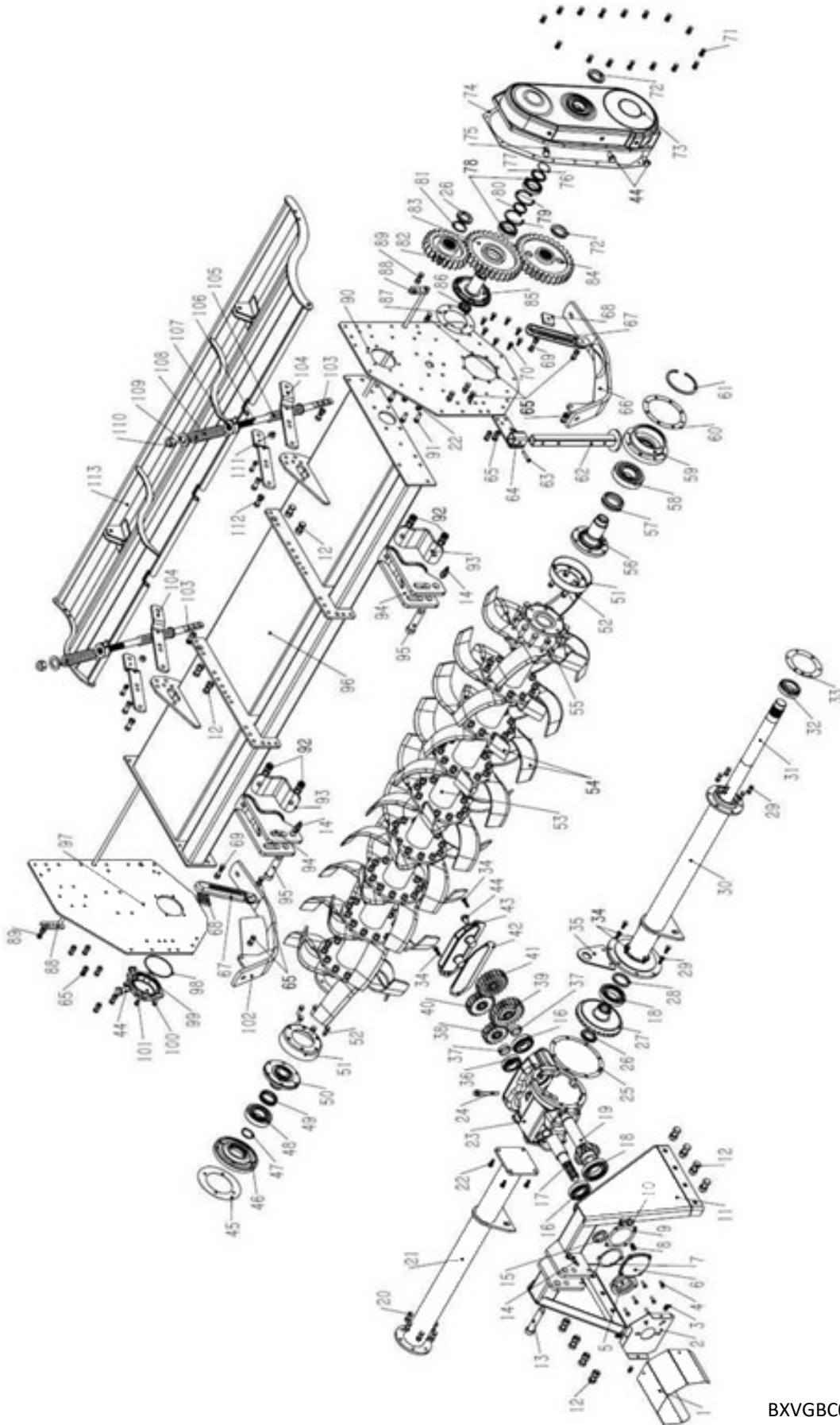


BXVGC001 Gearbox Complete

BXV-075, BXV-085, BXV-094, BXV-104

| Item | Part # | Description | Qty. |
|------|-------------|--|----------------|
| 31 | BV0311-75 | Drive Shaft -BXV-076 | - |
| | BV0311-86 | Drive Shaft -BXV-086 | - |
| | BV0311-94 | Drive Shaft -BXV-094 | - |
| | BV0311-104 | Drive Shaft -BXV-104 | - |
| 32 | B32210JR | Bearing- 32210JR | 1 |
| 33 | BV0312 | Gasket Drive Shaft—162 x 111 x 1 | 1 |
| 34 | BM1012535 | Bolt- M10 x 1.25 x 35 | 4 |
| 35 | BV0322 | Gearbox Lift Bracket | 1 |
| 36 | B32208JR | Bearing 32208JR | 1 |
| 37 | BV0308 | Spacer for Exchange Gear 48 x 40x15 | 2 |
| 38 | BV0304 | Exchange Gear- Z16 | 1 |
| 39 | BV0307 | Exchange Gear- Z22 | 1 |
| 40 | BV0303 | Exchange Gear- Z18 | 1 |
| 41 | BV0306 | Exchange Gear- Z20 | 1 |
| 42 | BV0302 | Gasket - Rear Cover | 1 |
| 43 | BV0305 | Rear Cover | 1 |
| 44 | OP1615 | Oil Plug- M16 x 1.5 | 4 |
| 45 | BV0407 | Gasket for Rotor- Right Side of Tiller | 1 |
| 46 | BV0406 | Bearing Support - Right Side | 1 |
| 47 | SRE-50 | Snap Ring- M50 External | 1 |
| 48 | B20310C | Bearing- 20310C | 1 |
| 49 | OSFH0610 | Floating Oil Seal- FH0610 | 1 |
| 50 | BV0405 | Rotor Support Shaft - Right | |
| 51 | BV0403 | Rotor Shield | 2 |
| 52 | BM1212535 | Bolt- M12 x 1.25 x 35 | 12 |
| 53 | BV0401 - 75 | Rotor Shaft - BXV-075 | 1 |
| 54 | BV0210R | Tiller Tine- Right | 24-27-30-33 |
| | BV0210L | Tiller Tine- Left | 24-27-30-33 |
| 55 | BM141540 | Bolt- 14 x 1.5 x 40 | 96-108-120-132 |
| | LW14 | Lock Washer- M14 | 96-108-120-132 |
| | NM1415 | Nut- M14 x 1.5 | 96-108-120-132 |
| 56 | BV0402 | Rotor Support Shaft - Left | 1 |
| 57 | OSH0720A | FH0720A Floating Seal | 1 |
| 58 | B21312 | Bearing- 21312 | 1 |
| 59 | BV0401 | Bearing support | 1 |

BXV-075, BXV-085, BXV-094, BXV-104

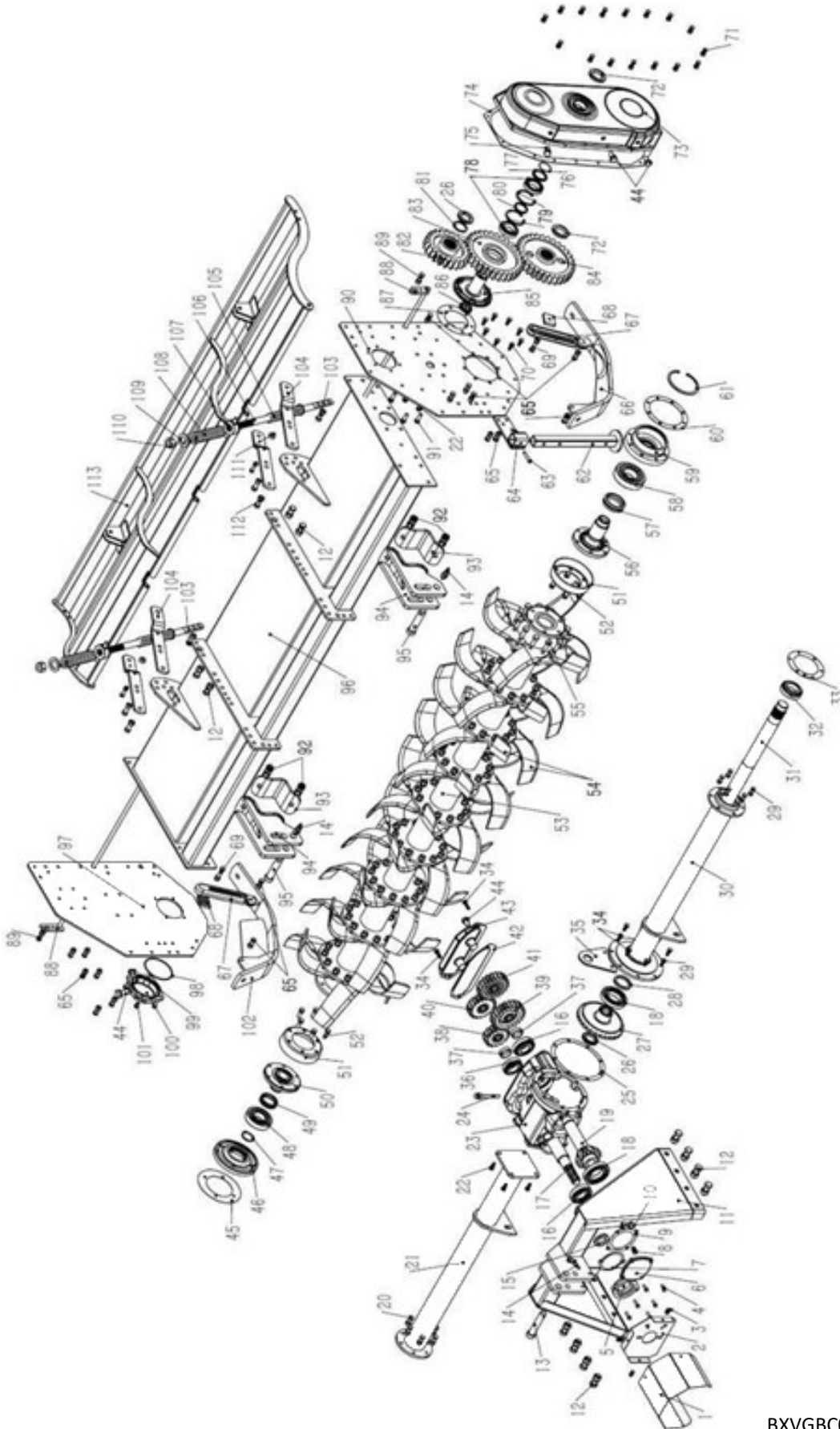


BXVGC001 Gearbox Complete

BXV-075, BXV-085, BXV-094, BXV-104

| Item | Part # | Description | Qty. |
|-------------|---------------|--|-------------|
| 60 | BV0511 | Gasket for Rotor- Left Side | 1 |
| 61 | SRI-130 | Snap Ring- M130 - Internal | 1 |
| 62 | BV0702 | Stand | 1 |
| 63 | BV0703 | Lynch Pin- M10 x 55 | 1 |
| 64 | BV0701 | Bracket - Stand | 1 |
| 65 | BM1212535 | Bolt- M12 x 1.25 x 35 | 16 |
| 66 | BV0902 | Skid Weldment -Left | 1 |
| 67 | BV0801 | Skid Adjustment Bracket | 2 |
| 68 | BV0802 | Skid Adjustment Stop | 2 |
| 69 | BM1212560 | Bolt- M12 x 1.25 x 60 | 2 |
| 70 | BM1012525 | Bolt- M10 x 1.25 x 25 | 8 |
| 71 | BM1012525 | Bolt- M10 x 1.25 x 25 | 14 |
| 72 | SNM50150 | Spanner Nut- M50 x 1.5 | 2 |
| 73 | BV0500 | Gear Cover | 1 |
| 74 | BV0507 | Gasket- Gear Cover | 1 |
| 75 | OP1615B | Breather Cap - M16 x 1.5 | 1 |
| 76 | OR50x18 | O-Ring- M50 x 1.8 | 1 |
| 77 | BV0503 | Spacer- Idler Gear- M63.5 x 50 x 6.5 | 1 |
| 78 | B32010JR | Bearing- 32010JR | |
| 79 | SRI-80 | Snap Ring- Internal- M80 | 2 |
| 80 | BV0505 | Gasket- Center Gear- M57 x 50 x 5 | 1 |
| 81 | BV0506 | Spacer- Top Gear- M63 x 50 x 2 | 1 |
| 82 | BV0508 | Gear- Top- Z-23 | 1 |
| 83 | BV0502 | Gear- Idler- Z-31 | 1 |
| 84 | BV0501 | Gear- Bottom- Z-31 | 1 |
| 85 | BV0510 | Idler Gear Hub | 1 |
| 86 | LN3515 | Self-locking Nut- M35 x 1.5 | 1 |
| 87 | BV0509 | Gasket- Idler Gear hub- M170 x 140 x 1 | 1 |
| 88 | BV0605-75 | Rod- Tail Gate- BXV-075 | 2 |
| | BV0605-85 | Rod- Tail Gate- BXV-085 | 2 |
| | BV0605-94 | Rod- Tail Gate- BXV-094 | 2 |
| | BV0605-104 | Rod- Tail Gate- BXV-0104 | 2 |
| 89 | BM1212545 | Bolt- M12 x 1.25 x 45 | 2 |
| 90 | BV0506 | Side Board- Left | 1 |
| 91 | BM1212540 | Bolt- M12 x 1.25 x 40 | 4 |

BXV-075, BXV-085, BXV-094, BXV-104

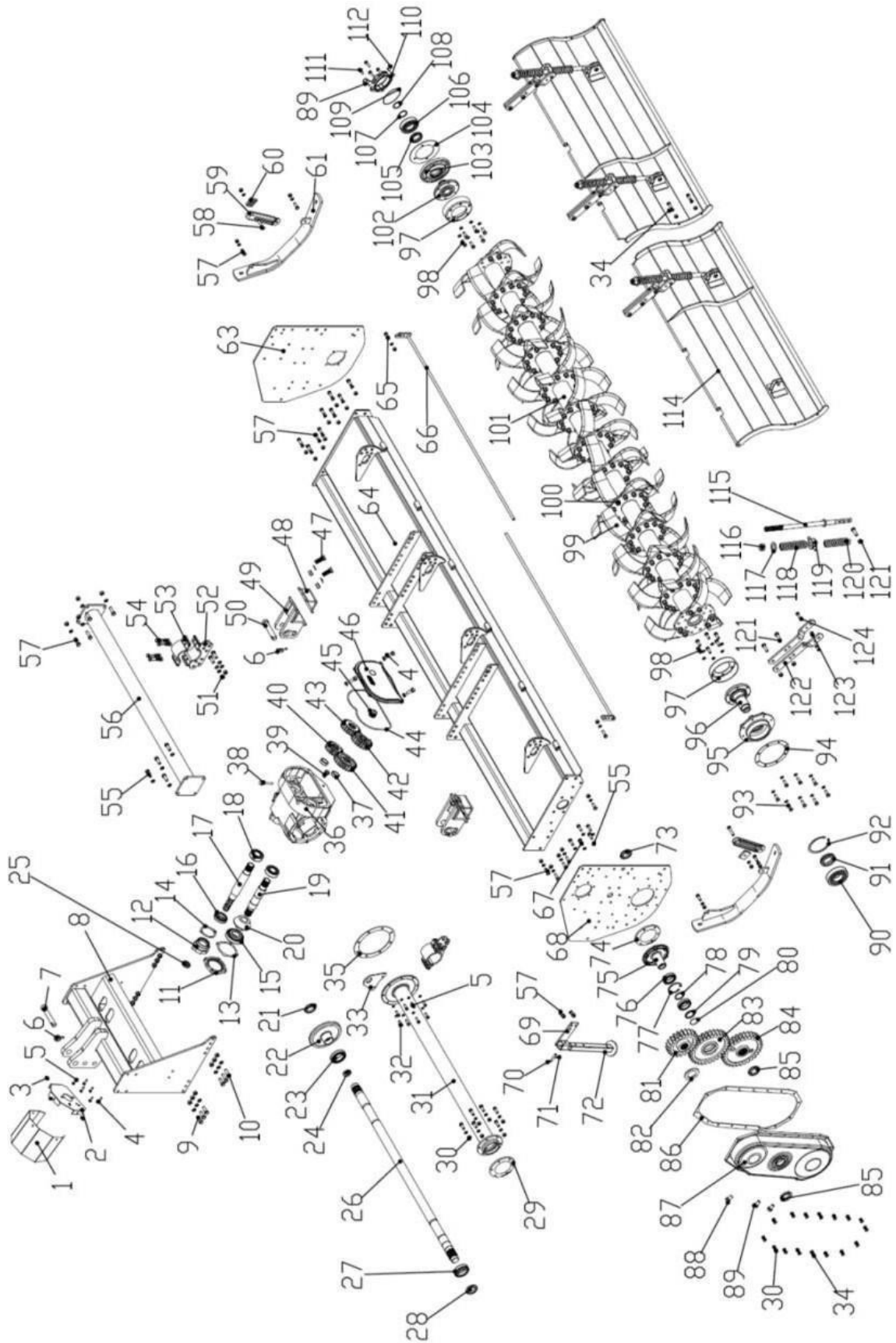


BXVGC001 Gearbox Complete

BXV-075, BXV-085, BXV-094, BXV-104

| Item | Part # | Description | Qty. |
|-------------|---------------|--|-------------|
| 92 | BM181550 | Bolt- M18 x 1.5 x 50 | 4 |
| 93 | BV0204 | Hitch Block Support | 2 |
| 94 | BV0203 | Lower Hitch Block | 2 |
| 95 | BV0205 | Lower Hitch Pin | 2 |
| 96 | BV0201-75 | Main Frame - BXV-075 | 1 |
| | BV0201-85 | Main Frame - BXV-085 | 1 |
| | BV0201-94 | Main Frame - BXV-094 | 1 |
| | BV0201-104 | Main Frame - BXV-104 | 1 |
| 97 | BV0202 | Side Board - Right | 1 |
| 98 | OR118x355 | O-Ring- M118 x 3.55 | 1 |
| 99 | OP12125 | Oil Plug- M12 x 1.25 | 1 |
| 100 | BV0409 | Rotor Cap | 1 |
| 101 | BM1212540 | Bolt- M12 x 1.25 x 40 | 4 |
| 102 | BV0901 | Skid Weldment- Right | 1 |
| 103 | BM1012545 | Bolt- M10 x 1.25 x 45 | 2 |
| 104 | BV0603 | Bracket- Tailgate Spring | 4 |
| 105 | BV0609 | Lower Spring- Tailgate- M184 | 2 |
| 106 | BV0605 | Rod- Tailgate | 2 |
| 107 | BV0606 | Spring Bushing | 2 |
| 108 | BV0601 | Upper Spring- Tailgate- M175 | 2 |
| 109 | FW24 | Flat Washer- M24 | 2 |
| 110 | LN2415 | Self-Locking Nut- M24 x 1.5 | 2 |
| 111 | BV0604 | Spacer- Tailgate Brackets- M26 x 10.5 x 10 | 2 |
| 112 | BM141545 | Bolt- M14 x 1.5 x 45 | 6 |
| 113 | BV0602-075 | Tailgate- BXV-075 | 1 |
| | BV0602-085 | Tailgate- BXV-085 | 1 |
| | BV0602-094 | Tailgate- BXV-094 | 1 |
| | BV0602-104 | Tailgate- BXV-104 | 1 |
| | 147130 | Complete PTO - Series 80 - 220mm Slip Clutch | |
| | 180-510-80 | Friction Disc – 6.30” OD | |
| | BXVGB001 | Complete Gearbox | |

CXT Series Rotary Tiller (Version 1)

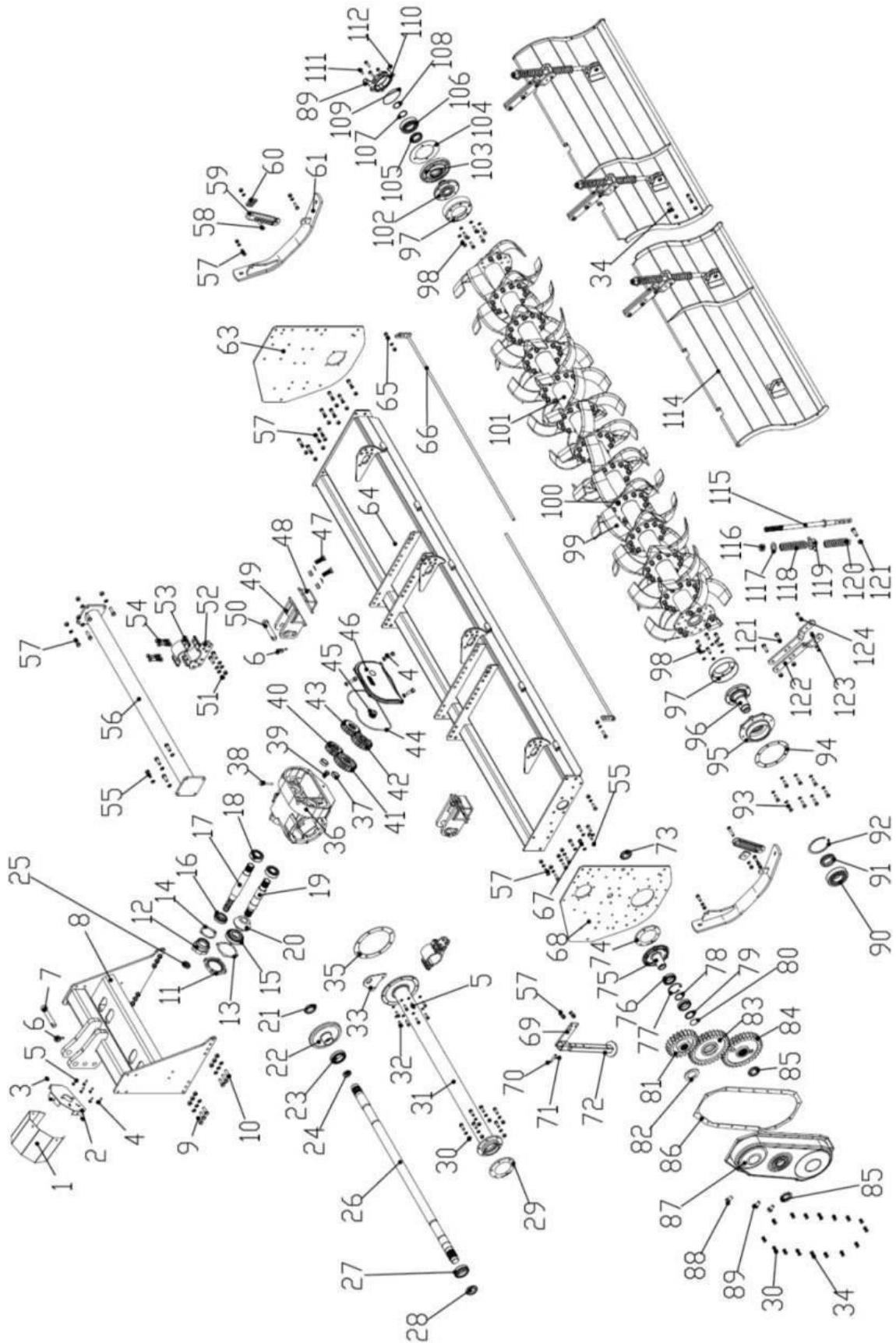


CXTGBC001 Gearbox Complete

CXT Series Rotary Tiller (Version 1)

| Item | Part # | Description | Qty. |
|------|------------|---------------------------|------|
| 1 | BV0317 | PTO shield | 1 |
| 2 | BV0321 | PTO shield support | 1 |
| 3 | BM812516 | Bolt- M8 x 1.25 x 16 | 3 |
| 4 | BM1012535 | Bolt- M10 x 1.25 x 35 | 7 |
| 5 | BM1012535 | Bolt- M10 x 1.25 x 35 | 4 |
| 6 | LYNPN10 | Lynch Pin- M10 | 3 |
| 7 | BV0103 | Top Hitch Pin | 1 |
| 8 | CX0101 | A-Frame | 1 |
| 9 | BM141540 | Bolt- M14 x 1.5 x 40 | 8 |
| 10 | BM141545 | Bolt- M14 x 1.5 x 45 | 4 |
| 11 | CX0315 | Bearing Cap- Pinion Shaft | 1 |
| 12 | CX0320 | Cap- Input Shaft | 1 |
| 13 | CX0314 | Gasket- Pinion shaft | 1 |
| 14 | CX0318 | Gasket- Input Shaft | 1 |
| 15 | B31310 | Bearing- 31310 | 1 |
| 16 | B30208 | Bearing- 30208 | 1 |
| 17 | CX0319 | Input Shaft | 1 |
| 18 | B33208 | Bearing- 33208 | 2 |
| 19 | CX0316 | Pinion Shaft | 1 |
| 20 | CX0323 | Pinion Gear | 1 |
| 21 | NM4515 | Nut- M45 x 1.5 | 1 |
| 22 | CX0322 | Ring Gear | 1 |
| 23 | B32012 | Bearing- 32012 | 1 |
| 24 | OS60758 | Oil Seal- M60 x 75 x 8 | 1 |
| 25 | OS406210 | Oil Seal- M40 x 62 x 10 | 1 |
| 26 | CX0311-076 | Drive Shaft CXT-076 | 1 |
| | CX0311-086 | Drive Shaft CXT-086 | 1 |
| | CX0311-095 | Drive Shaft CXT-095 | 1 |
| | CX0311-104 | Drive Shaft CXT-104 | 1 |
| | CX0311-112 | Drive Shaft CXT-112 | 1 |
| | CX0311-121 | Drive Shaft CXT-121 | 1 |

CXT Series Rotary Tiller (Version 1)

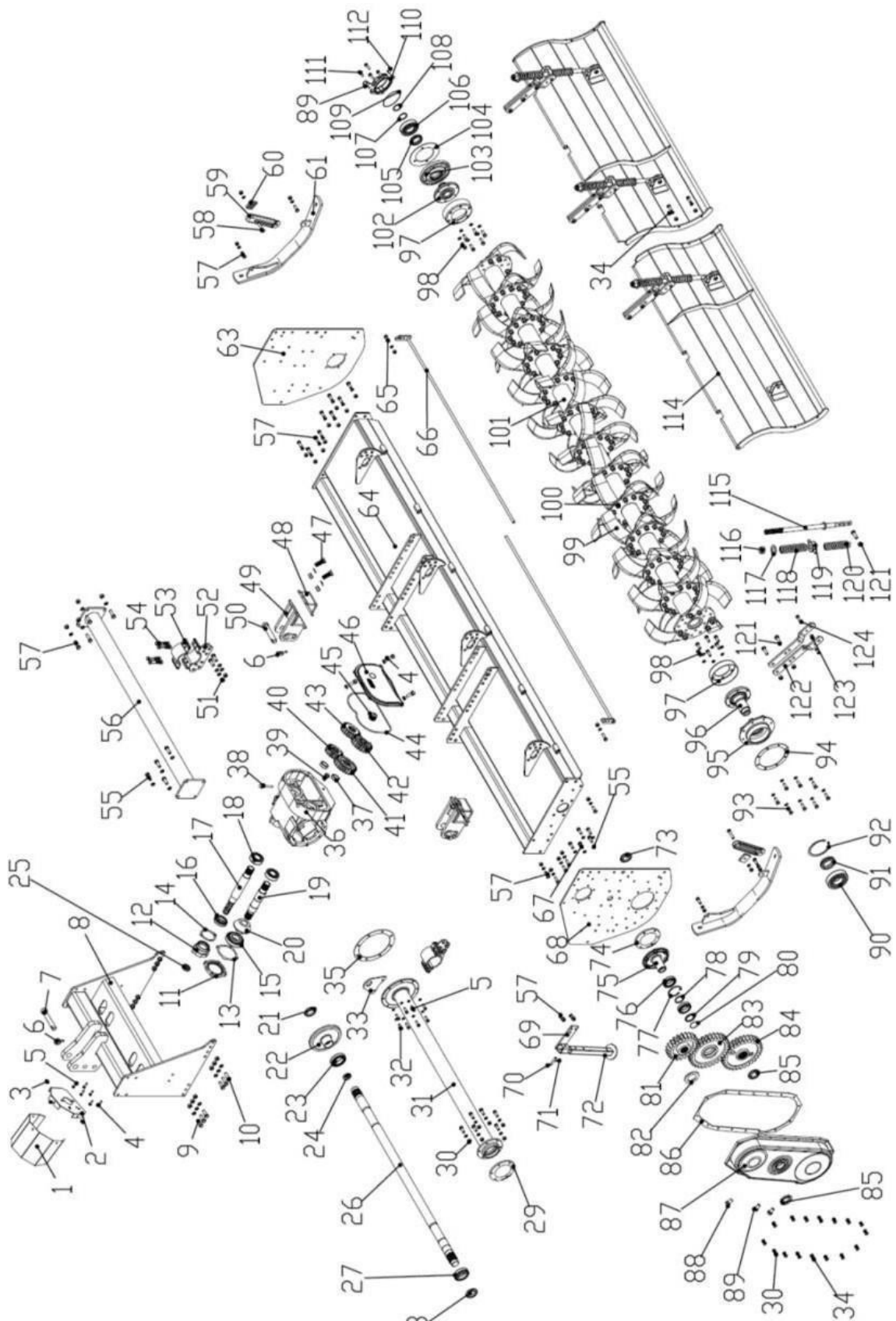


CXTGBC001 Gearbox Complete

CXT Series Rotary Tiller (Version 1)

| Item | Part # | Description | Qty. |
|------|---------------|-------------------------------------|------|
| 27 | B32210 | Bearing- 32210 | 1 |
| 28 | SLNM4515 | Spanner Self-locking Nut- M45 x 1.5 | 1 |
| 29 | BV0312 | Gasket - Drive Tube Outer | 1 |
| 30 | BM1012530 | Bolt- M10 x 1.25 x 30 | 20 |
| 31 | CX0310-076 | Drive Shaft Tube Housing - CXT-076 | 1 |
| | CX0310-086 | Drive Shaft Tube Housing - CXT-086 | 1 |
| | CX0310-095 | Drive Shaft Tube Housing - CXT-095 | 1 |
| | CX0310-104 | Drive Shaft Tube Housing - CXT-104 | 1 |
| | CX0310-112 | Drive Shaft Tube Housing - CXT-112 | 1 |
| | CX0310-121 | Drive Shaft Tube Housing - CXT-121 | 1 |
| 32 | BM1012530 | Bolt- M10 x 1.25 x 30 | 6 |
| 33 | BV0322 | Gearbox Lift Bracket | 1 |
| 34 | BM1012535 | Bolt- M10 x 1.25 x 35 | 4 |
| 35 | CX0309 | Gasket- Drive Tube- Inner | 1 |
| 36 | CX0313 | Gearbox Housing | 1 |
| 37 | CX0308 | Spacer- Exchange Gear | 2 |
| 38 | YT10660303000 | Dipstick | 1 |
| 39 | OP1415 | Oil Plug- M14 x 1.5 | 1 |
| 40 | CX0304 | Exchange Gear- Z17 | 1 |
| 41 | CX0303 | Exchange Gear- Z23 | 1 |
| 42 | CX0307 | Exchange Gear- Z21 | 1 |
| 43 | CX0306 | Exchange Gear- Z19 | 1 |
| 44 | CX0302 | Gasket Rear Cover | 1 |
| 45 | CX0312 | Gear Shaft | 1 |
| 46 | CX0305 | Gearbox Cover | 1 |
| 47 | BM151550 | Bolt- M18 x 1.5 x 50 | 4 |
| 48 | BX0207 | Hitch Block Support | 2 |
| 49 | CX0205 | Hitch Block | 2 |
| 50 | CX0204 | Lower Hitch Pin - Cat. 2 | 2 |
| 51 | BM1412540 | Bolt- M14 x 1.50 x 40 | 4 |
| 52 | CX0203 | Lower Tube Support | 2 |

CXT Series Rotary Tiller (Version 1)

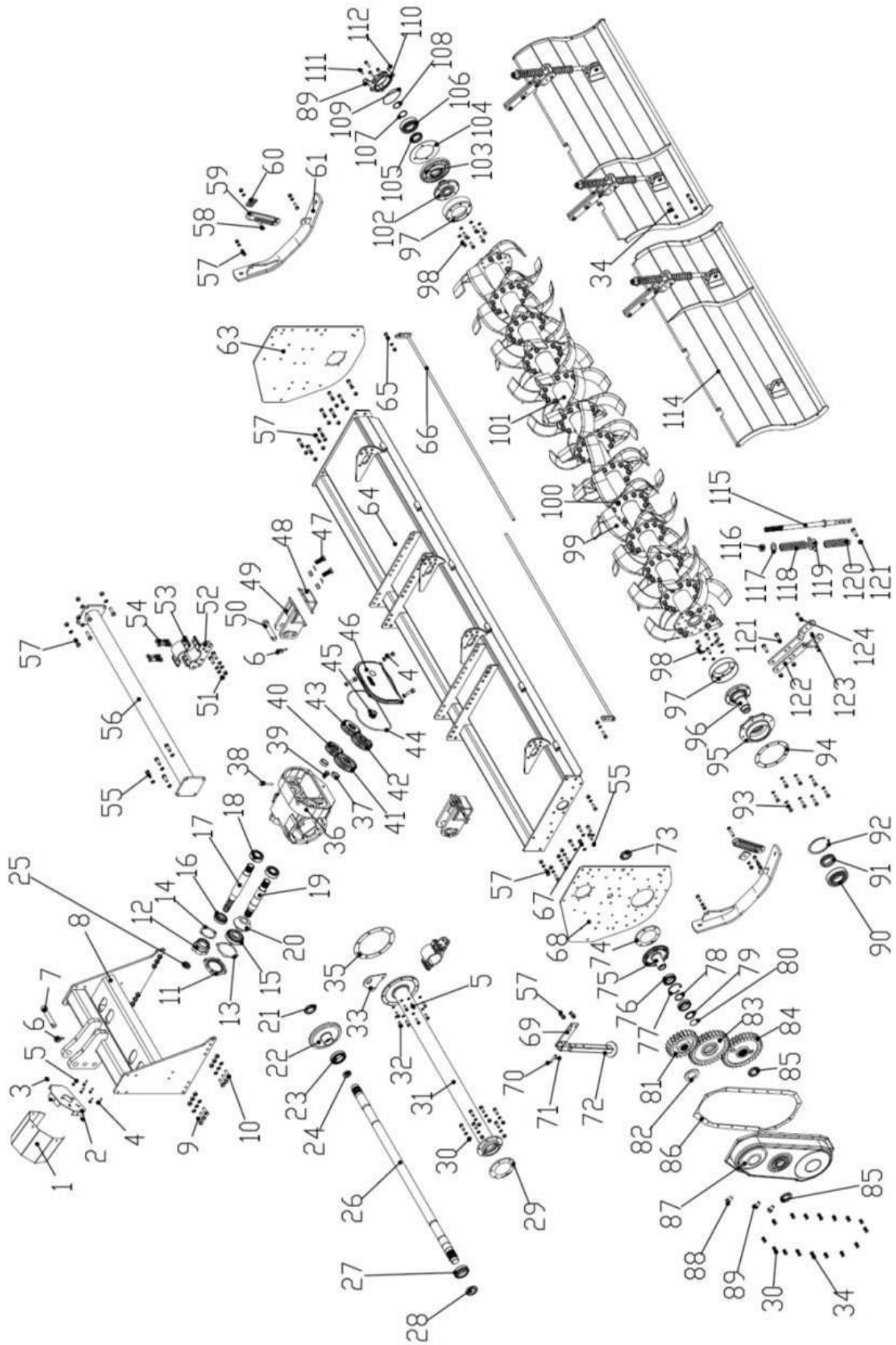


CXTGBC001 Gearbox Complete

CXT Series Rotary Tiller (Version 1)

| Item | Part # | Description | Qty. |
|------|------------|-------------------------------|------|
| 53 | CX0202 | Upper Tube Support | 2 |
| 54 | BM1212540 | Bolt- M12 x 1.25 x 40 | 8 |
| 55 | BM1212530 | Bolt- M12 x 1.25 x 30 | 5 |
| 56 | CX0301-076 | Gearbox Support Tube- CXT-076 | 1 |
| | CX0301-086 | Gearbox Support Tube- CXT-086 | 1 |
| | CX0301-095 | Gearbox Support Tube- CXT-095 | 1 |
| | CX0301-104 | Gearbox Support Tube- CXT-104 | 1 |
| | CX0301-110 | Gearbox Support Tube- CXT-112 | 1 |
| | CX0301-121 | Gearbox Support Tube- CXT-121 | 1 |
| 57 | BM1212535 | Bolt- M12 x 1.25 x 35 | 24 |
| 58 | BM1212560 | Bolt- M12 x 1.25 x 60 | 2 |
| 59 | BX0802 | Skid Adjustment Stop | 2 |
| 60 | BX0801 | Skid Adjustment Bracket | 2 |
| 61 | BV0901 | Skid Weldment - Right | 1 |
| 62 | BV0902 | Skid Weldment - Left | 1 |
| 63 | CX0201 | Side Board-Right | 1 |
| 64 | CX300-076 | Main Frame- CXT-076 | 1 |
| | CX300-086 | Main Frame- CXT-086 | 1 |
| | CX300-095 | Main Frame- CXT-095 | 1 |
| | CX300-104 | Main Frame- CXT-104 | 1 |
| | CX300-112 | Main Frame- CXT-112 | 1 |
| | CX300-121 | Main Frame- CXT-121 | 1 |
| 65 | BM1212545 | Bolt- M12 x 1.25 x 45 | 2 |
| 66 | CX0603-076 | Rod Tailgate- CXT-076 | 2 |
| | CX0603-086 | Rod Tailgate- CXT-086 | 2 |
| | CX0603-095 | Rod Tailgate- CXT-095 | 2 |
| | CX0603-104 | Rod Tailgate- CXT-104 | 2 |
| | CX0603-112 | Rod Tailgate- CXT-112 | 2 |
| | CX0603-121 | Rod Tailgate- CXT-121 | 2 |
| 67 | BM1212540 | Bolt- M12 x 1.25 x 40 | 4 |
| 68 | BV0506 | Side Board- Left | 1 |

CXT Series Rotary Tiller (Version 1)

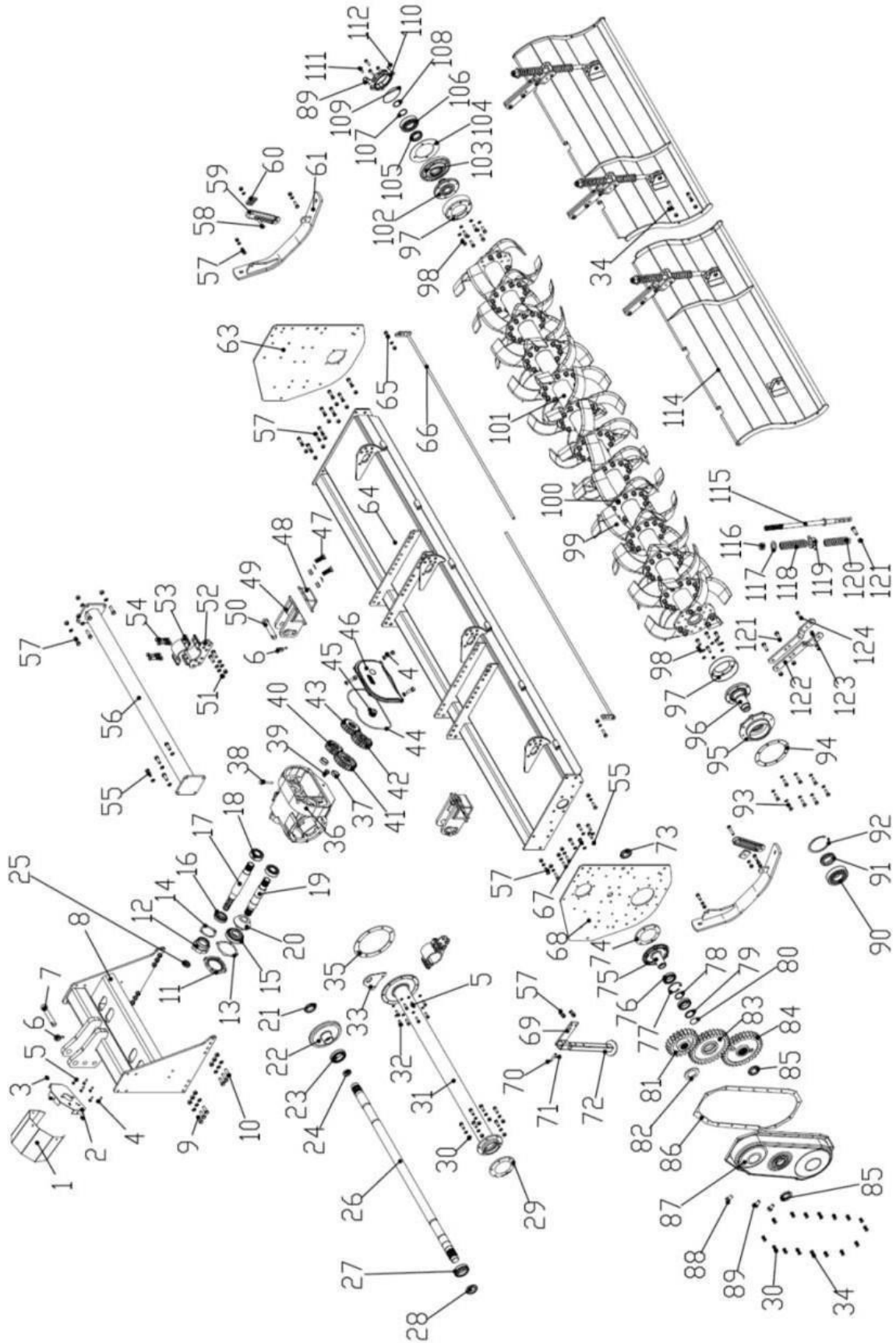


CXTGBC001 Gearbox Complete

CXT Series Rotary Tiller (Version 1)

| Item | Part # | Description | Qty. |
|------|-----------|--|------|
| 69 | BV0701 | Bracket- Stand | 1 |
| 70 | LYNPN10 | Lynch Pin- M10 x 55 | 1 |
| 71 | RC3 | R-Clip- M3 | 1 |
| 72 | BV0702 | Stand | 1 |
| 73 | NM3515 | Nut- M35 x 1.5 | 1 |
| 74 | BV0509 | Gasket- Idler Gear Hub- M170 x 140 x 1 | 1 |
| 75 | BV0510 | Idler Gear Hub | 1 |
| 76 | B32010 | Bearing- 32010 | 2 |
| 77 | SRI-80 | Snap Ring- M80- Internal | 2 |
| 78 | BV0504 | Spacer- M63 x 50 x 2 | 1 |
| 79 | BV0503 | Idler Gear Spacer- M63.5 x 50 x 6.5 | 1 |
| 80 | OR50x1.8 | O Ring- M50 x 1.8 | 1 |
| 81 | BV0508 | Top Gear- Z23 | 1 |
| 82 | BV0504 | Top Gear Spacer- M63 x 50 x 2 | 1 |
| 83 | BV0502 | Idler Gear- Z31 | 1 |
| 84 | BV0501 | Bottom Gear- Z31 | 1 |
| 85 | SNM5015 | Spanner Nut- M50 x 1.5 | 2 |
| 86 | BV0507 | Gasket for Side Gear Cover | 1 |
| 87 | BV0500 | Gear Cover | 1 |
| 88 | OP1615V | Breather Cap- M16 x 1.5 Vented | 1 |
| 89 | OP1615 | Oil Plug- M16 x 1.5 | 3 |
| 90 | B6312 | Bearing- 6312 | 1 |
| 91 | OSHF0720A | Oil Seal- HF0720A | 1 |
| 92 | SRI-130 | Snap Ring- M130- Internal | 1 |
| 93 | BM1012525 | Bolt- M10 x 1.25 x 25 | 8 |
| 94 | CX0511 | Gasket for Left Side of Rotor | 1 |
| 95 | CX0401 | Bearing Support | 1 |
| 96 | BV0402 | Rotor Support Shaft - Left | 1 |
| 97 | BV0403 | Rotor Shield | 2 |
| 98 | BM1212535 | Bolt- M12 x 1.25 x 35 | 12 |

CXT Series Rotary Tiller (Version 1)

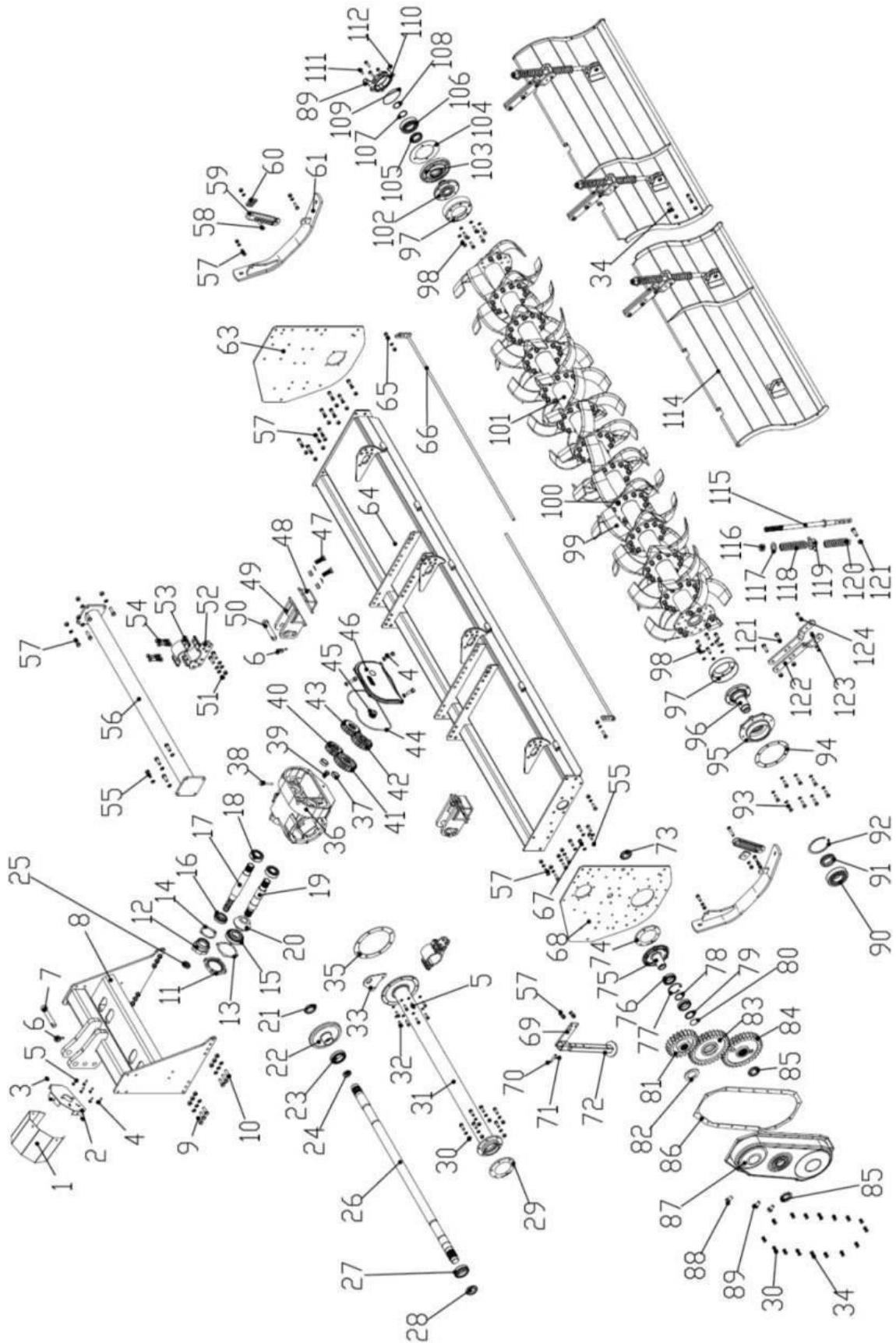


CXTGBC001 Gearbox Complete

CXT Series Rotary Tiller (Version 1)

| Item | Part # | Description | Qty. |
|------|------------|--|------|
| 99 | BV0210R | Tiller Tine- Right (CXT-076) | 21 |
| | BV0210L | Tiller Tine- Left (CXT-076) | 21 |
| | BV0210R | Tiller Tine- Right (CXT-086) | 24 |
| | BV0210L | Tiller Tine- Left (CXT-086) | 24 |
| | BV0210R | Tiller Tine- Right (CXT-095) | 27 |
| | BV0210L | Tiller Tine- Left (CXT-095) | 27 |
| | BV0210R | Tiller Tine- Right (CXT-104) | 30 |
| | BV0210L | Tiller Tine- Left (CXT-104) | 30 |
| | BV0210R | Tiller Tine- Right (CXT-112) | 33 |
| | BV0210L | Tiller Tine- Left (CXT-112) | 33 |
| | BV0210R | Tiller Tine- Right (CXT-121) | 36 |
| | BV0210L | Tiller Tine- Left (CXT-121) | 36 |
| 100 | BM141540 | Bolt- M14 x 1.5 x 40 | - |
| | LW14 | Washer, lock M14 | - |
| | NM1415 | Nut, HH M14-1.5 | - |
| 101 | CX0401-076 | Rotor Shaft- CXT-076 | 1 |
| | CX0401-086 | Rotor Shaft- CXT-086 | 1 |
| | CX0401-095 | Rotor Shaft- CXT-095 | 1 |
| | CX0401-104 | Rotor Shaft- CXT-104 | 1 |
| | CX0401-112 | Rotor Shaft- CXT-112 | 1 |
| 101 | CX0401-121 | Rotor Shaft- CXT-121 | 1 |
| 102 | BV0405 | Rotor Support Shaft- Right | 1 |
| 103 | BV0406 | Bearing Support | 1 |
| 104 | BV0407 | Gasket- M192 x 118 x 1 | 1 |
| 105 | OSHP0610 | Oil Seal- HP0610 | 1 |
| 106 | B6310 | Bearing- 6310 | 1 |
| 107 | BV0408 | Spacer- Rotor Support- Right- M63 x 50 x 4 | 1 |
| 108 | SRE-50 | Snap Ring- External- M50 | 1 |
| 109 | OR118x3.55 | O-Ring- M118 x 3.55 | 1 |
| 110 | BV0409 | Rotor Cap | 1 |
| 111 | BM1212540 | Bolt- M12 x 1.25 x 40 | 4 |
| 112 | OP12125 | Oil Plug- M12 x 1.25 | 1 |

CXT Series Rotary Tiller (Version 1)

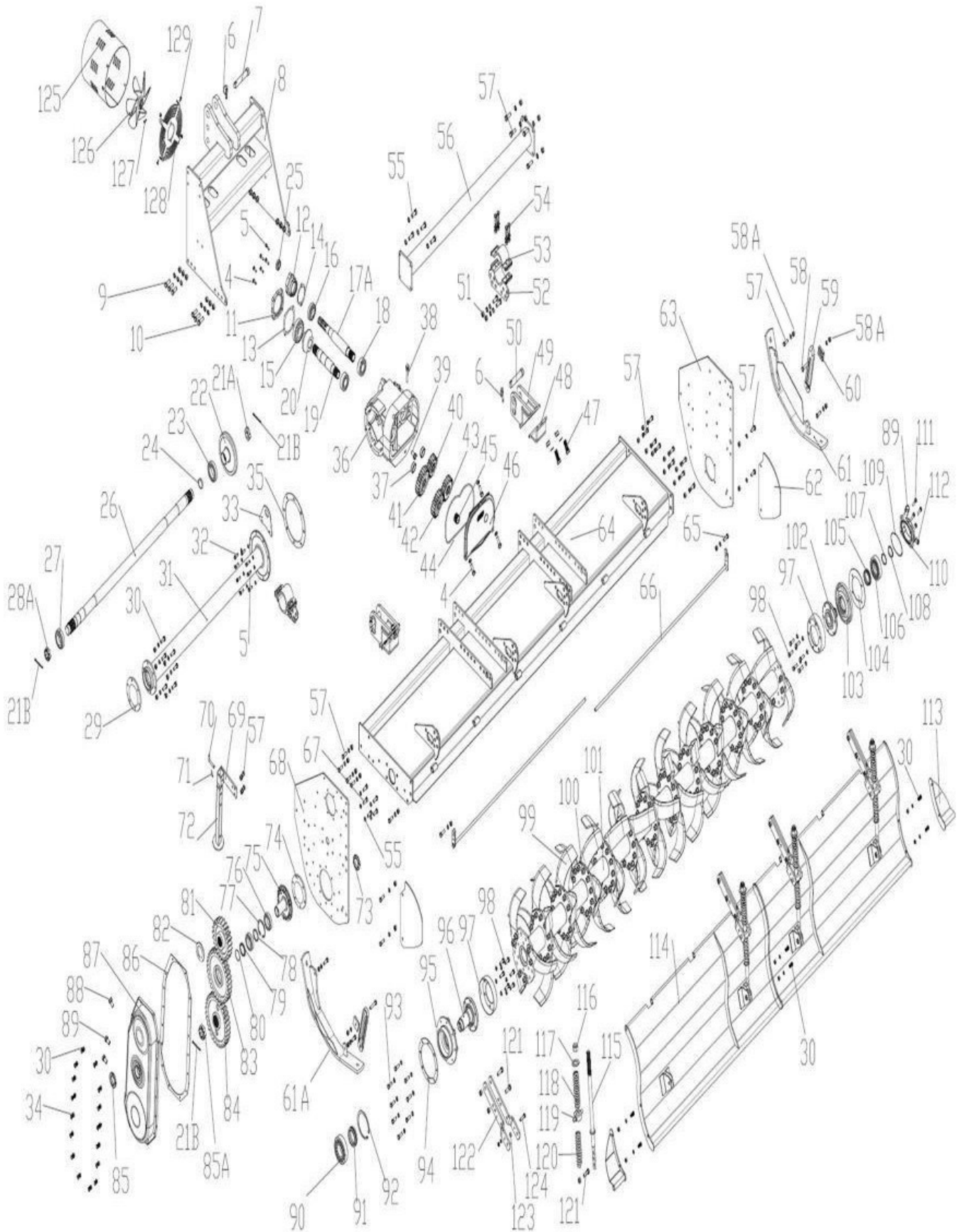


CXTGBC001 Gearbox Complete

CXT Series Rotary Tiller (Version 1)

| Item | Part # | Description | Qty. |
|------|-------------|---|------|
| 114 | CX0601-076R | Tailgate- Right- CXT-076 | 1 |
| | CX0601-076L | Tailgate- Left- CXT-076 | 1 |
| | CX0601-086R | Tailgate- Right- CXT-086 | 1 |
| | CX0601-086L | Tailgate- Left- CXT-086 | 1 |
| | CX0601-095R | Tailgate- Right- CXT-095 | 1 |
| | CX0601-095L | Tailgate- Left- CXT-095 | 1 |
| | CX0601-104R | Tailgate- Right- CXT-104 | 1 |
| | CX0601-104L | Tailgate- Left- CXT-104 | 1 |
| | CX0601-112R | Tailgate- Right- CXT-112 | 1 |
| | CX0601-112L | Tailgate- Left- CXT-112 | 1 |
| | CX0601-121R | Tailgate- Right- CXT-121 | 1 |
| | CX0601-121L | Tailgate- Left- CXT-121 | 1 |
| 115 | BV0605 | Rod- Tailgate | 2 |
| 116 | LNM243 | Self-locking Nut- M24 x 3.0 | 4 |
| 117 | FW24 | Flat Washer- M24 | 4 |
| 118 | BV0601 | Upper Tailgate Spring- M175 | 4 |
| 119 | BV0606 | Spring Bushing | 4 |
| 120 | BV0609 | Lower Tailgate Spring- M184 | 4 |
| 121 | BM141545 | Bolt- M14 x1.5 x 45 | 12 |
| 122 | BV0603 | Tailgate Spring Bracket- | 8 |
| 123 | BV0604 | Spacer for Tailgate Brackets- M26 x 10.5 x 10 | 4 |
| 124 | BM1012545 | Bolt- M10 x 1.25 x 45 | 4 |
| | CXTGBC001 | Gearbox Complete- with exchange gears | |
| | 147130 | Complete PTO - Series 80 - M220 Slip Clutch | 1 |
| | 180-510-60 | Friction Disc – 6.30” OD | 1 |

CXT Series Rotary Tiller (Version 2)

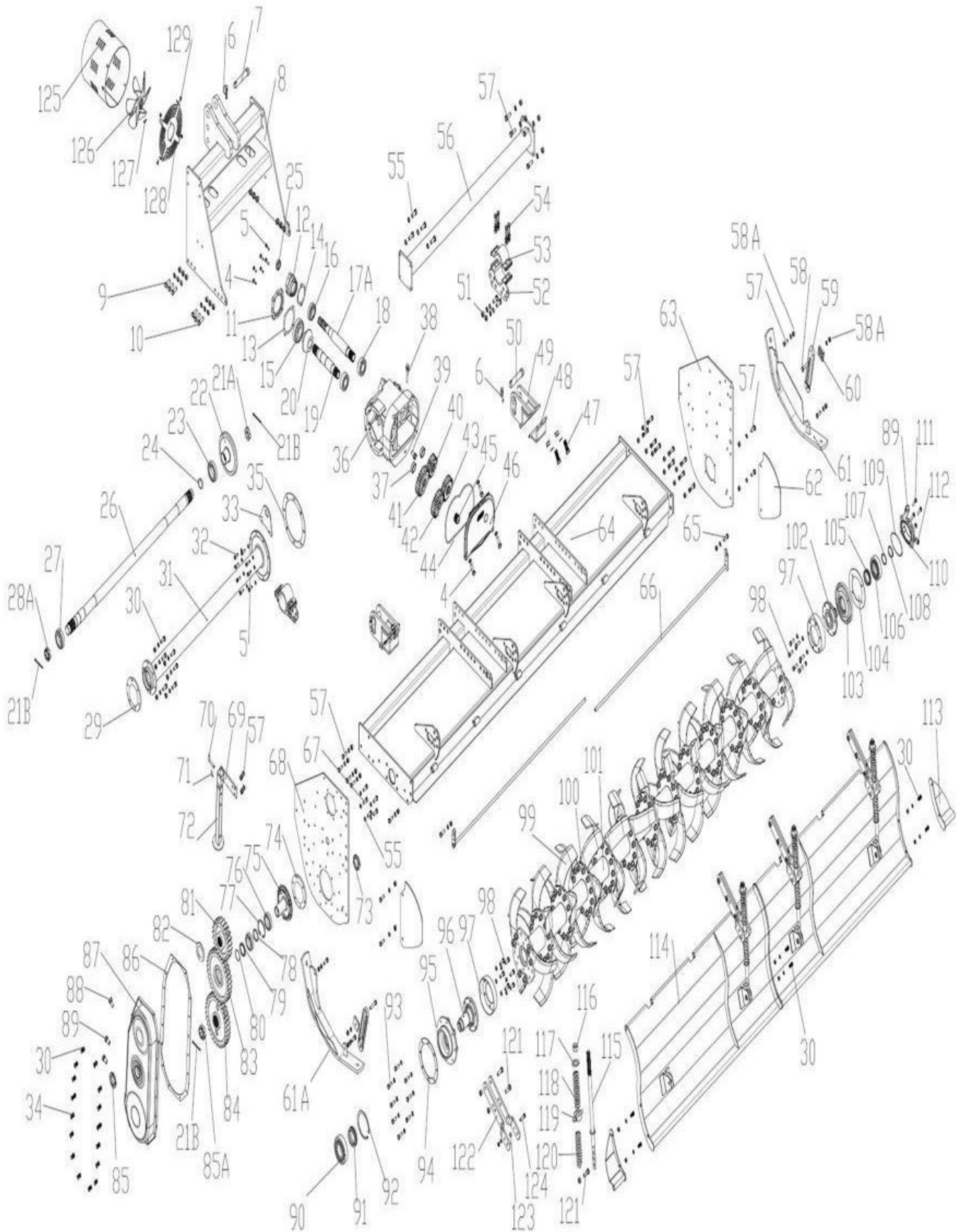


CXTGBC001 Gearbox Complete

CXT Series Rotary Tiller (Version 2)

| Item | Part # | Description | Qty. |
|------|------------|--------------------------|------|
| 1 | N/A | | |
| 2 | N/A | | |
| 3 | N/A | | |
| 4 | BM1012535 | Bolt- M10 x 1.25 x 35 | 7 |
| 5 | BM1012535 | Bolt- M10 x 1.25 x 35 | 4 |
| 6 | LYNPN10 | Lynch Pin- M10 | 3 |
| 7 | BV0103 | Top Hitch Pin | 1 |
| 8 | CX0101 | A-Frame | 1 |
| 9 | BM141540 | Bolt- M14 x 1.5 x 40 | 8 |
| 10 | BM141545 | Bolt- M14 x 1.5 x 45 | 4 |
| 11 | CX0315 | Pinion Shaft Bearing Cap | 1 |
| 12 | CX0320 | Input Shaft Cap | 1 |
| 13 | CX0314 | Pinion Shaft Gasket | 1 |
| 14 | CX0318 | Input Shaft Gasket | 1 |
| 15 | B31310 | Bearing- 31310 (HRB) | 1 |
| 16 | B31208 | Bearing- 30208 (HRB) | 1 |
| 17 | CX0319A | Input Shaft | 1 |
| 18 | B33208 | Bearing- 33208 (HRB) | 2 |
| 19 | CX0316 | Pinion Shaft | 1 |
| 20 | CX0323 | Pinion Gear | 1 |
| 21 | CP5x80 | Cotter Pin- M5 x 80 | |
| 22 | CX0322 | Ring Gear | 1 |
| 23 | B32012 | Bearing- 32012 (HRB) | 1 |
| 24 | OS607508 | Oil Seal- M60 x 75 x 8 | 1 |
| 25 | OS406210 | Oil Seal- M40 x 62 x 10 | 1 |
| 26 | CX0311-086 | Drive Shaft- CXT-086 | 1 |
| | CX0311-095 | Drive Shaft- CXT-095 | 1 |
| | CX0311-104 | Drive Shaft- CXT-104 | 1 |
| | CX0311-112 | Drive Shaft- CXT-112 | 1 |
| | CX0311-121 | Drive Shaft- CXT-121 | 1 |
| 27 | B32210 | Bearing- 32210 (HRB) | 1 |

CXT Series Rotary Tiller (Version 2)

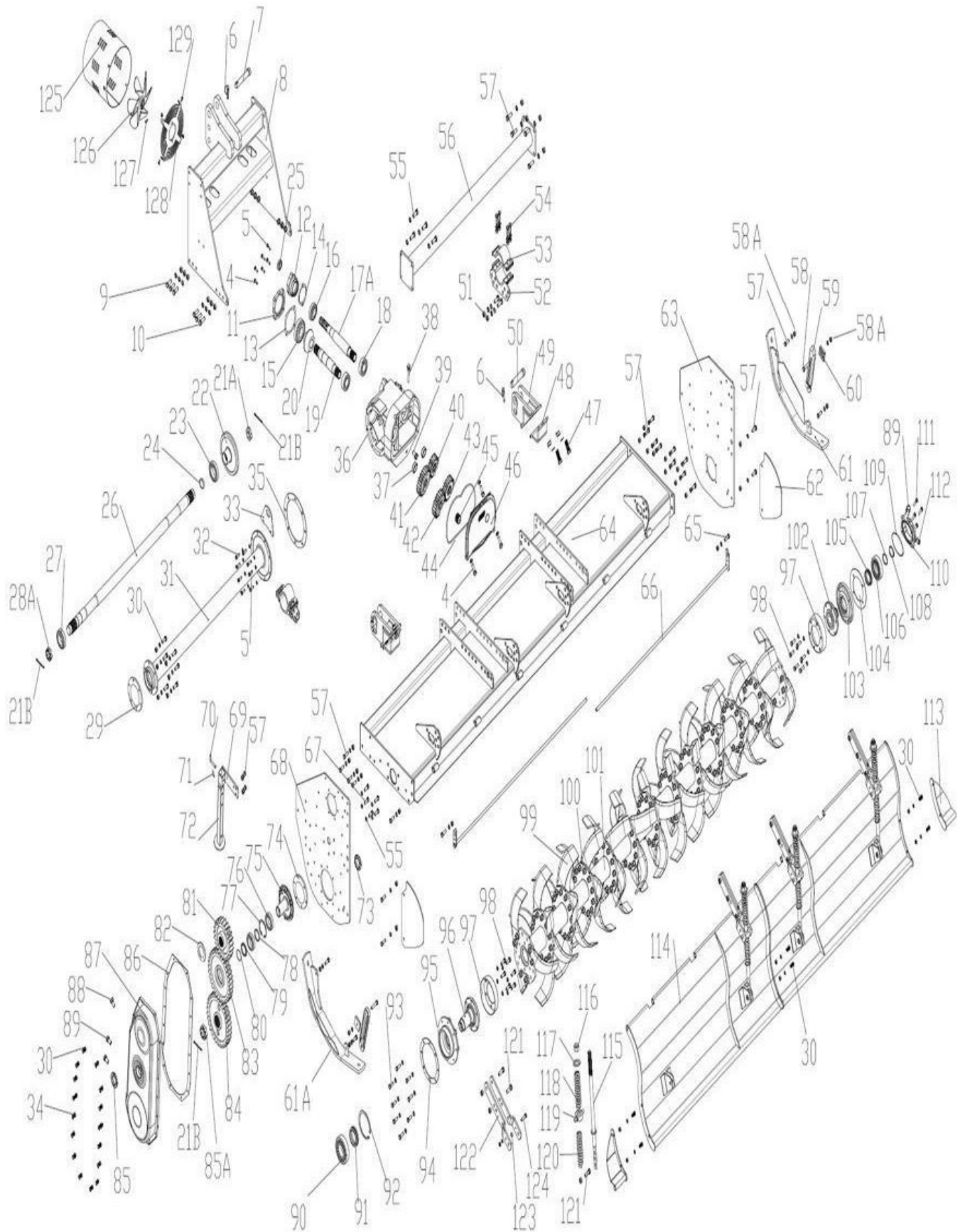


CXTGBC001 Gearbox Complete

CXT Series Rotary Tiller (Version 2)

| Item | Part # | Description | Qty. |
|------|---------------|-------------------------------------|------|
| 28 | SLNM4515 | Spanner Self-locking Nut- M45 x 1.5 | 1 |
| 29 | BV0312 | Gasket- Drive Tube Outer | |
| 30 | BM1012530 | Bolt- M10 x 1.25 x 30 | 20 |
| 31 | CX0310-086 | Gearbox Shaft Tube Housing- CXT-086 | 1 |
| | CX0310-095 | Gearbox Shaft Tube Housing- CXT-095 | 1 |
| | CX0310-104 | Gearbox Shaft Tube Housing- CXT-104 | 1 |
| | CX0310-112 | Gearbox Shaft Tube Housing- CXT-112 | 1 |
| | CX0310-121 | Gearbox Shaft Tube Housing- CXT-121 | 1 |
| 32 | BM1012530 | Bolt- M10 x 1.25 x 30 | 6 |
| 33 | BV0322 | Gearbox Lift Bracket | 1 |
| 34 | BM1012530 | Bolt- M10 x 1.25 x 30 | 20 |
| 35 | CX0309 | Gasket- Drive Tube- Inner | 1 |
| 36 | CX0313 | Gearbox Housing | 1 |
| 37 | CX0308 | Spacer (Exchange Gear) | 2 |
| 38 | YT10660303000 | Dip Stick | 1 |
| 39 | OP1415 | Oil Plug- M14X1.5 | 1 |
| 40 | CX0304 | Exchange Gear- Z17 | 1 |
| 41 | CX0303 | Exchange Gear- Z23 | 1 |
| 42 | CX0307 | Exchange Gear- Z21 | 1 |
| 43 | CX0306 | Exchange Gear- Z19 | 1 |
| 44 | CX0302 | Gasket Rear Cover | 1 |
| 45 | CX0312 | Gear Shaft | 1 |
| 46 | CX0305 | Gearbox Cover | 1 |
| 47 | BM181550 | Bolt- M18 x 1.5 x 50 | 4 |
| 48 | BX0207 | Hitch Block Support | 2 |
| 49 | CX0205 | Hitch Block | 2 |
| 50 | CX0204 | Lower Hitch Pin- Cat.2 | 2 |
| 51 | BM141540 | Bolt- M14 x 1.5 x 40 | 4 |
| 52 | CX0203 | Tube Support-Lower | 2 |
| 53 | CX0202 | Tube Support-Upper | 2 |
| 54 | BM1212540 | Bolt- M12 x 1.25 x 40 | 8 |

CXT Series Rotary Tiller (Version 2)

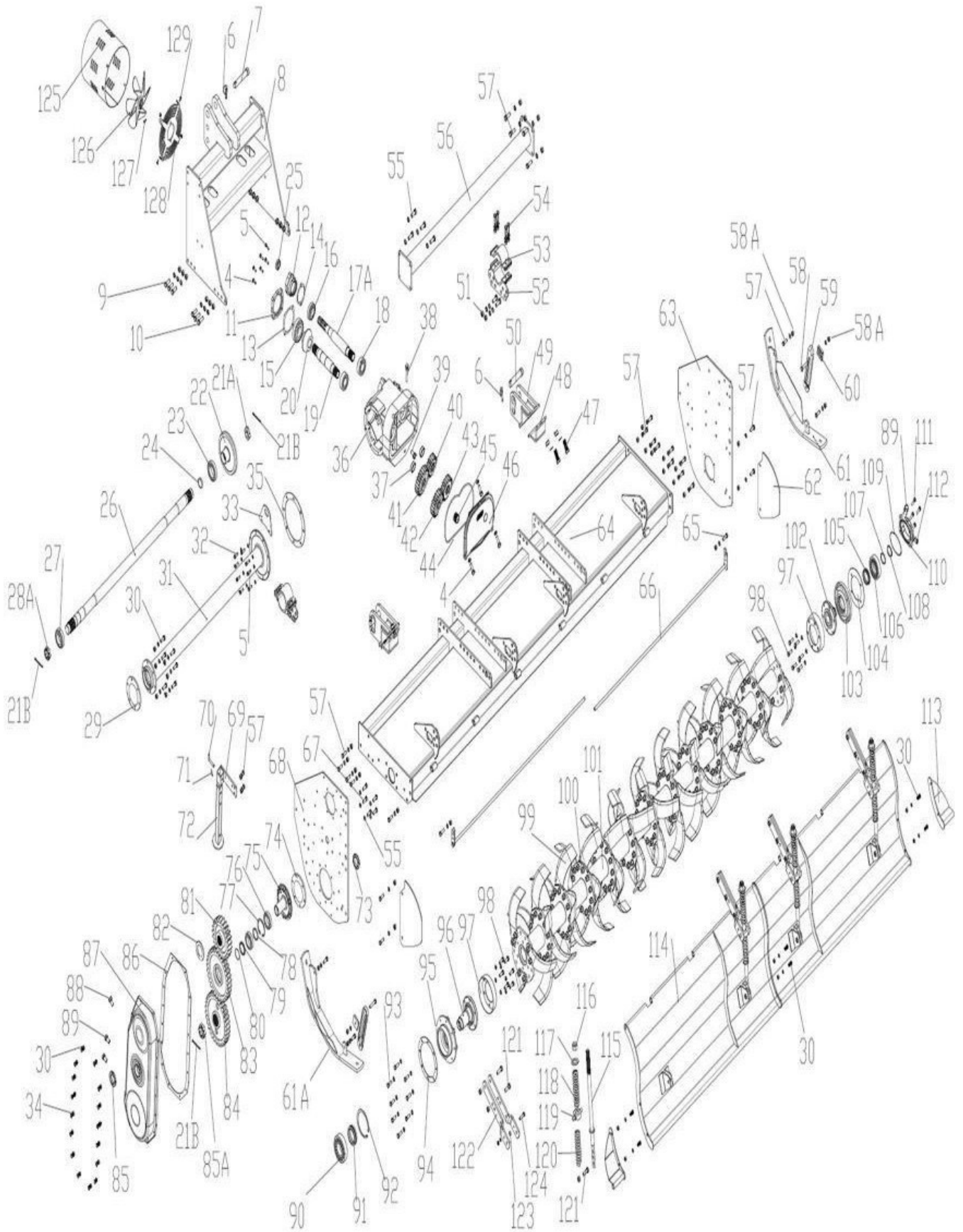


CXTGBC001 Gearbox Complete

CXT Series Rotary Tiller (Version 2)

| Item | Part # | Description | Qty. |
|------|------------|-------------------------------|------|
| 55 | BM1212530 | Bolt- M12 x 1.25 x 30 | 5 |
| 56 | CX0301-086 | Gearbox Support Tube- CXT-086 | 1 |
| | CX0301-095 | Gearbox Support Tube- CXT-095 | 1 |
| | CX0301-104 | Gearbox Support Tube- CXT-104 | 1 |
| | CX0301-112 | Gearbox Support Tube- CXT-112 | 1 |
| | CX0301-121 | Gearbox Support Tube- CXT-121 | 1 |
| 57 | BM1212535 | Bolt- M12 x 1.25 x 35 | 24 |
| 58 | BM1212560 | Bolt- M12 x 1.25 x 60 | 2 |
| 58A | LNM12125 | Self locking nut M12-1.25 | 26 |
| 59 | BV0801 | Skid Adjustment Bracket | 2 |
| 60 | BV0802 | Skid Adjustment Stop | 2 |
| 61 | BV0902 | Skid Weldment- Left | 1 |
| 61A | BV0901 | Skid Weldment- Right | 1 |
| 62 | BV0509 | Gasket- M170 x 140 x 1 | 2 |
| 63 | CX0201 | Side Board- Right | 1 |
| 64 | CX2050201 | Main Frame- CXT-086 | 1 |
| | CX2300201 | Main Frame- CXT-095 | 1 |
| | CX2600201 | Main Frame- CXT-104 | 1 |
| | CX2800202 | Main Frame- CXT-112 | 1 |
| | CX3000201 | Main Frame- CXT-121 | 1 |
| 65 | BM1212545 | Bolt- M12 x 1.25 x 45 | 2 |
| 66 | CX0603-086 | Rod- Tail Gate - CXT-086 | 2 |
| | CX0603-095 | Rod- Tail Gate - CXT-095 | 2 |
| | CX0603-104 | Rod- Tail Gate - CXT-104 | 2 |
| | CX0603-112 | Rod- Tail Gate - CXT-112 | 2 |
| | CX0603-121 | Rod- Tail Gate - CXT-121 | 2 |
| 67 | BM1212540 | Bolt- M12 x 1.25 x 40 | 4 |
| 68 | BV0506 | Side Board- Left | 1 |
| 69 | BV0701 | Bracket- Stand | 1 |
| 70 | BV0703 | Lynch Pin- M10 x 55 | 1 |
| 71 | RC3000 | R Clip- M3 | 1 |
| 72 | BV0702 | Stand | 1 |
| 73 | SNM3515 | Spanner Nut- M35 x 1.5 | 1 |

CXT Series Rotary Tiller (Version 2)

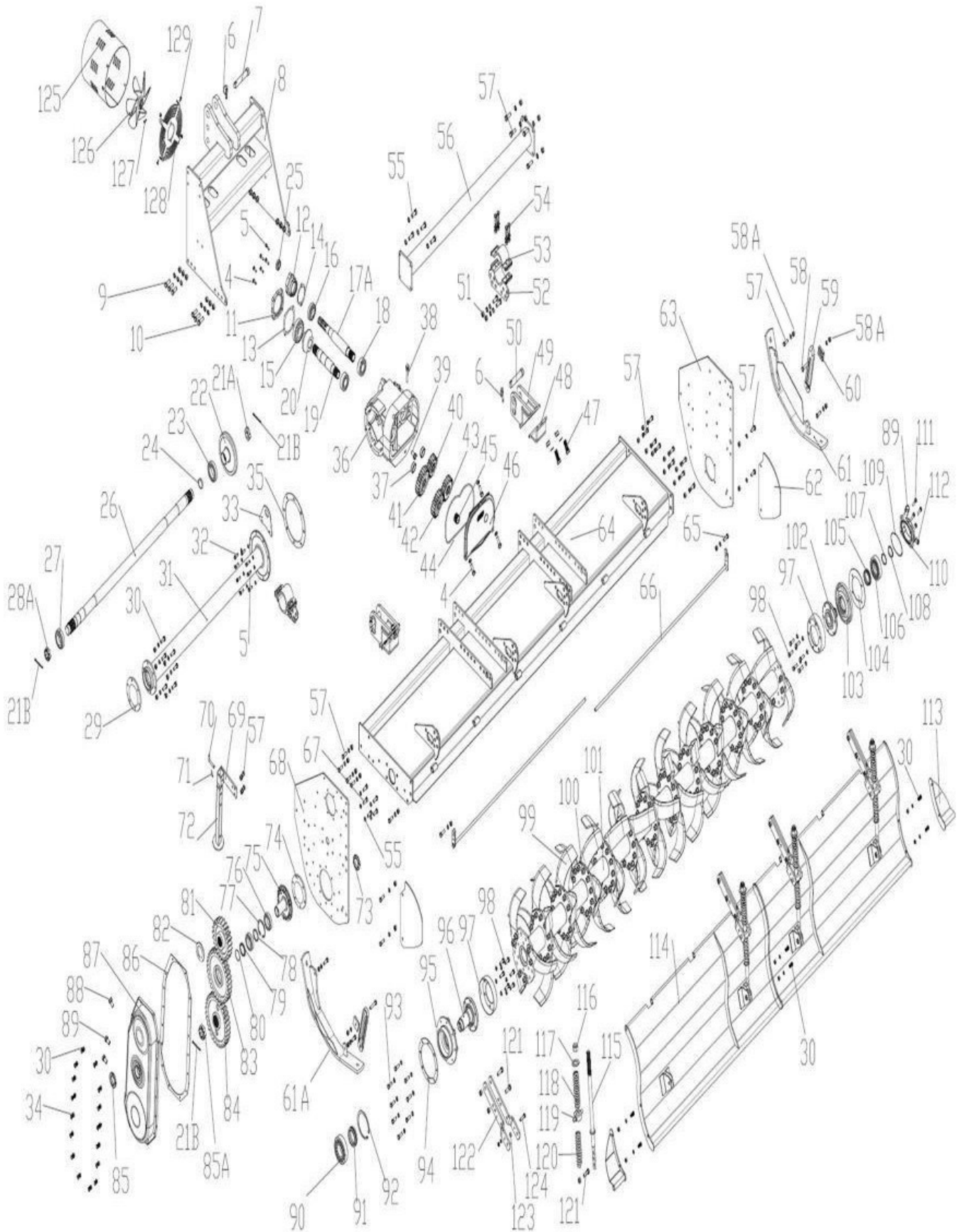


CXTGBC001 Gearbox Complete

CXT Series Rotary Tiller (Version 2)

| Item | Part # | Description | Qty. |
|------|-----------|--------------------------------------|------|
| 74 | BV0509 | Gasket- Idler Gear hub | 1 |
| 75 | BV0510 | Idler Gear Hub | 1 |
| 76 | B32010 | Bearing- 32010 | 2 |
| 77 | SRI-80 | Snap Ring- Internal- M80 | 2 |
| 78 | BV0504 | Spacer- M63 x 50 x 2 | 1 |
| 79 | BV0503 | Spacer- Idler Gear- M63.5 x 50 x 6.5 | 1 |
| 80 | OR5018 | O-Ring- M50 x 1.8 | 1 |
| 81 | BV0505 | Gear- Top Z23 | 1 |
| 82 | BV0506 | Spacer- Top Gear- M63 x 50 x 2 | 1 |
| 83 | BV0502 | Gear- Idler Z31 | 1 |
| 84 | BV0501 | Gear- Bottom Z31 | 1 |
| 85 | SLNM5015 | Self-Locking Spanner Nut- M50 x 1.5 | 1 |
| 85A | SNM5015 | Spanner Nut- M50 x 1.5 | 1 |
| 86 | BV0507 | Gasket - Gear Cover | 1 |
| 87 | BV0501 | Gear Cover | 1 |
| 88 | OP1615V | Breather Cap- M16 x 1.5 | 1 |
| 89 | OP1615 | Oil Plug- M16 x 1.5 | 3 |
| 90 | B6312 | Bearing- 6312 | 1 |
| 91 | OSHF0720A | Oil Seal- HF0720A | 1 |
| 92 | SRI130 | Snap Ring- Internal- M130 | 1 |
| 93 | BM1012525 | Bolt- M10 x 1.25 x 25 | 8 |
| 94 | CX0511 | Gasket - Left Rotor | 1 |
| 95 | CX0401 | Bearing support | 1 |
| 96 | BV0402 | Rotor Support Shaft - Left | 1 |
| 97 | BV0403 | Rotor Shield | 2 |
| 98 | BM1212535 | Bolt- M12 x 1.25 x 35 | 12 |

CXT Series Rotary Tiller (Version 2)

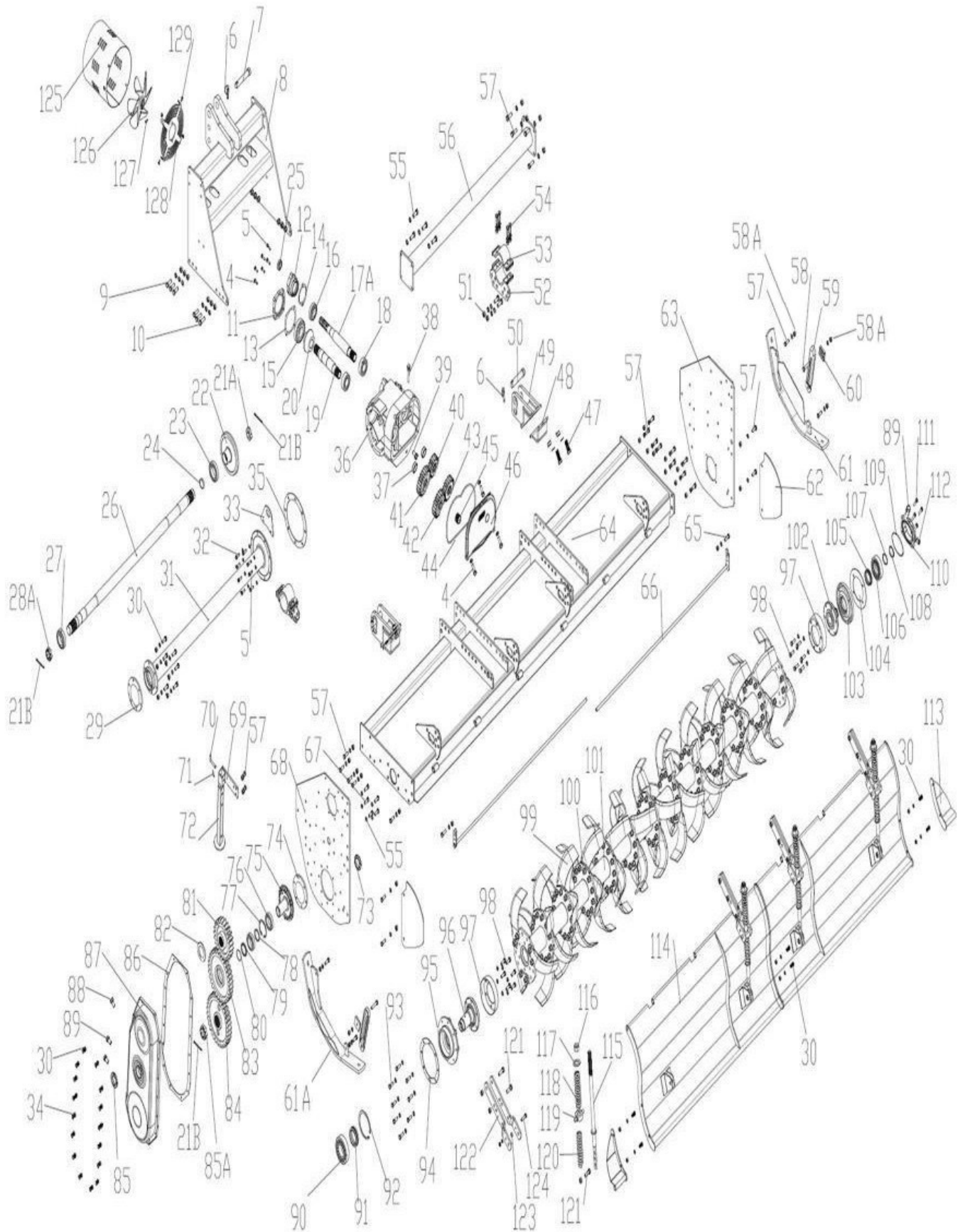


CXTGBC001 Gearbox Complete

CXT Series Rotary Tiller (Version 2)

| Item | Part # | Description | Qty. |
|--------|------------|--|----------------------|
| 99 | BV0210R | Tiller Tine- Right (CXT-086) | 24 |
| | BV0210L | Tiller Tine- Left (CXT-086) | 24 |
| | BV0210R | Tiller Tine- Right (CXT-095) | 27 |
| | BV0210L | Tiller Tine- Left (CXT-095) | 27 |
| | BV0210R | Tiller Tine- Right (CXT-104) | 30 |
| | BV0210L | Tiller Tine- Left (CXT-104) | 30 |
| | BV0210R | Tiller Tine- Right (CXT-112) | 33 |
| | BV0210L | Tiller Tine- Left (CXT-112) | 33 |
| | BV0210R | Tiller Tine- Right (CXT-121) | 36 |
| | BV0210L | Tiller Tine- Left (CXT-121) | 36 |
| | 100 | BM141540 | Bolt- M14 x 1.5 x 40 |
| LW14 | | Washer, lock M14 | 156 |
| LN1415 | | Nut, lock M14-1.5 | 156 |
| 101 | CX0401-086 | Rotor Shaft- CXT-086 | 1 |
| | CX0401-095 | Rotor Shaft- CXT- 095 | 1 |
| | CX0401-104 | Rotor Shaft- CXT-104 | 1 |
| | CX0401-112 | Rotor Shaft- CXT-112 | 1 |
| | CX0401-121 | Rotor Shaft- CXT-121 | 1 |
| 102 | BV0405 | Rotor Support Shaft- Right | 1 |
| 103 | BV0406 | Support Bearing- Rotor- Right | 1 |
| 104 | BV0407 | Gasket- Rotor- Right- M192 x 118 x 1 | 1 |
| 105 | OSHF0610 | Oil Seal- HF0610 | 1 |
| 106 | B6310 | Bearing- 6310 (HRB) | 1 |
| 107 | BV0408 | Spacer- Rotor Support- Right- M63 x 50 x 4 | 1 |
| 108 | SRE-50 | Snap Ring- External- M50 | 1 |
| 109 | OR118355 | Oil Ring- M118 x 3.55 | 1 |
| 110 | BV0409 | Rotor Cap | 1 |
| 111 | BM1212540 | Bolt- M12 x 1.25 x 40 | 4 |
| 112 | OP12125 | Oil Plug- M12 x 1.5 | 1 |
| 113A | CX0113A | Tailgate Extension- Left | 1 |
| 113B | CX0113B | Tailgate Extension- Right | 1 |

CXT Series Rotary Tiller (Version 2)

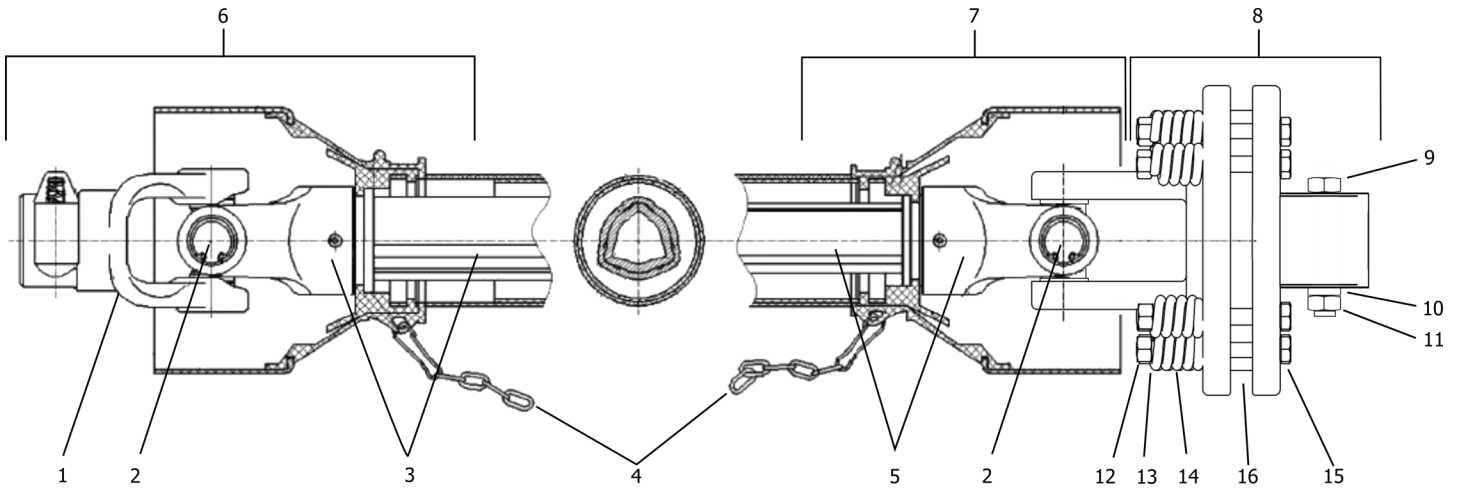


CXTGBC001 Gearbox Complete

CXT Series Rotary Tiller (Version 2)

| Item | Part # | Description | Qty. |
|------|------------|---------------------------------------|------|
| 114 | CX0601-086 | Tailgate- CXT-086 | 1 |
| | CX0601-095 | Tailgate- CXT-095 | 1 |
| | CX0601-104 | Tailgate- CXT-104 | 1 |
| | CX0601-112 | Tailgate- CXT-112 | 1 |
| | CX0601-121 | Tailgate- CXT-121 | 1 |
| 115 | BV0601 | Rod- Tailgate | 4 |
| 116 | LNM2430 | Self-Locking Nut- M24 x 3 | 4 |
| 117 | FW24 | Washer- M24 | 4 |
| 118 | BV0601 | Upper Spring- Tailgate | 4 |
| 119 | BV0606 | Spacer- Tailgate | 4 |
| 120 | BV0602 | Lower Spring- Tailgate | 4 |
| 121 | BM141545 | Bolt- M14 x 1.5 x 45 | 12 |
| 122 | BV0603 | Bracket- Tailgate Spring | 8 |
| 123 | BV0604 | Bolt Spacer- Tailgate | 4 |
| 124 | BM1012545 | Bolt- M10 x 1.25 x 45 | 4 |
| 125 | CXTCFS | Fan Shroud | 1 |
| 126 | CXTCF-01 | Fan | 1 |
| 127 | BM061016 | Securing Bolt- Fan | 1 |
| 128 | CXTCF-02 | Fan Protection Screen | 1 |
| 129 | BM061016 | Bolt- M6 x 1.0 x 16 | 4 |
| | CXTGBC001 | Gearbox Complete- with exchange gears | |

PTO Shaft - BXV, CXT



| Item | Part # | Description | Qty. |
|------|------------|---|------|
| 1 | DP1075-80 | PTO Yoke - Series 80 | 1 |
| 2 | DP1076-80 | Cross and Bearings - Series 80 | 2 |
| 3 | DP1079-80 | Female Yoke and Tube (tractor end) - Series 80 | 1 |
| 4 | 5SB3007 | Safety chain | 2 |
| 5 | DP1078-80 | Male Yoke and Tube (implement end) - Series 80 | 1 |
| 6 | DP1074F-80 | Complete Female End PTO Shielding (tractor end) | 1 |
| 7 | DP1074M-80 | Complete Male End PTO Shielding (implement end) | 1 |
| 8 | DP1098-80 | Slip clutch complete 220mm clutch | 1 |
| 9 | BM1217565 | Bolt HH M12-1.75x65 (8.8) | 2 |
| 10 | LNLM12175 | Nut lock M12-1.75 | 2 |
| 11 | FW12 | Washer flat M12 | 2 |
| 12 | LNLM1015 | Nut lock M10-1.50 | 8 |
| 13 | FW10 | Washer flat M10 | 8 |
| 14 | 1215012-30 | Spring - slip clutch | 8 |
| 15 | BM1015110 | Bolt HH 10-1.50x110 (8.8) | 8 |
| 16 | 180-510-80 | Friction disc - 160mm x 98mm | 4 |
| - | 147130 | Complete PTO - Series 80 - 220mm Slip Clutch | 1 |

Model Modifications - CXT

| <u>Version 1</u> | | <u>Version 2</u> | |
|------------------|-------------|------------------|---------------|
| Model # | Serial # | Model # | Serial # |
| CXT-076 | Up to 5004 | CXT-076 | 5005 & after |
| CXT-086 | Up to 20002 | CXT-086 | 20003 & after |
| CXT-095 | Up to 23003 | CXT-095 | 23004 & after |
| CXT-104 | Up to 26001 | CXT-104 | 26002 & after |
| CXT-112 | Up to 28001 | CXT-112 | 28002 & after |
| CXT-121 | Up to 30005 | CXT-121 | 30006 & after |

Warranty

LIMITED WARRANTY

LMC warrants to the original purchaser of any new piece of machinery from LMC, purchased from an authorized LMC dealer, that the equipment be free from defects in material and workmanship for a period of one (1) year for non-commercial, state, and municipalities' use, ninety (90) days for commercial use from date of retail sale. Warranty for rental purposes is thirty (30) days. The obligation of LMC to the purchaser under this warranty is limited to the repair or replacement of defective parts.

Replacement or repair parts installed in the equipment covered by this limited warranty are warranted for ninety (90) days from the date of purchase of such part or to the expiration of the applicable new equipment warranty period, whichever occurs later. Warranted parts shall be provided at no cost to the user at an authorized LMC dealer during regular working hours. LMC reserves the right to inspect any equipment or parts, which are claimed to have been defective in material or workmanship.

This limited warranty does not apply to and excludes wear items such as shear pins, tires, tubes knives, blades or other wear items. Oil or grease is not covered by this warranty.

All obligations of LMC under this limited warranty shall be terminated if:

Proper service is not performed on the machine.

The machine is modified or altered in any way.

The machine is being used or has been used for purposes other than those for which the machine was intended.

DISCLAIMER OF IMPLIED WARRANTIES & CONSEQUENTIAL DAMAGES

LMC obligation under this limited warranty, to the extent allowed by law, is in lieu of all warranties, implied or expressed, including implied warranties of merchantability and fitness for a particular purpose and any liability for incidental and consequential damages with respect to the sale or use of the items warranted. Such incidental and consequential damages shall include but not be limited to: transportation charges other than normal freight charges; cost of installation other than cost approved by LMC; duty; taxes; charges for normal service or adjustment; loss of crops or any other loss of income; rental of substitute equipment, expenses due to loss, damage, detention or delay in the delivery.

Page left blank intentionally



1715 South Slappey Blvd
Albany, GA 31701
800-673-6369
www.lmcag.com