



Operator's Manual



Rotary Tiller

TC & RT

Rev. 11/21

TABLE OF CONTENTS

| | |
|--|-------|
| INTRODUCTION | 1 |
| SAFETY..... | 1 |
| SAFETY SIGNAL WORDS..... | 2 |
| GENERAL SAFETY GUIDELINES..... | 2 |
| SAFETY DECAL CARE..... | 3 |
| BEFORE OPERATION..... | 3 |
| DURING OPERATION..... | 4 |
| HIGHWAY AND TRANSPORT OPERATIONS | 5 |
| IMPORTANT INSTRUCTIONS BEFORE FIRST USE..... | 7 |
| ATTACHING TO TRACTOR..... | 9 |
| CONNECTING THE PTO SHAFT..... | 9 |
| SLIP CLUTCH ADJUSTMENT | 9 |
| WORKING DEPTH ADJUSTMENT | 10 |
| TALILGATE ADJUSTMENT..... | 10 |
| START UP | 10 |
| REMOVAL AND STORAGE | 10 |
| TC ROTARY TILLER: PARTS BREAKDOWN..... | 12-15 |
| RT ROTARY TILLER: PARTS BREAKDOWN..... | 17-19 |
| PTO SHAFT: PARTS BREAKDOWN..... | 20 |
| WARRANTY REGISTRATION FORM & INSPECTION REPORT | 21 |
| LIMITED WARRANTY | 23 |

INTRODUCTION

Thank you for purchasing your LMC Rotary Tiller. Your Rotary Tiller is designed to be used on Cat. 1 tractors and at 540 RPM. It is important to properly maintain and keep in place all safety guards and shields that came with your rotary tiller.

SAFETY

Read and understand this manual and all safety signs before operating and maintaining. Review the safety instructions and precautions annually.

TAKE NOTE! THIS SAFETY ALERT SYMBOL FOUND THROUGHOUT THIS MANUAL IS USED TO CALL YOUR ATTENTION TO INSTRUCTIONS INVOLVING YOUR PERSONAL SAFETY AND THE SAFETY OF OTHERS. FAILURE TO FOLLOW THESE INSTRUCTIONS CAN RESULT IN INJURY OR DEATH.



**THIS SYMBOL MEANS
ATTENTION!
BECOME ALERT!
YOUR SAFETY IS INVOLVED!**



SAFETY SIGNAL WORDS

Note the use of the signal words DANGER, WARNING and CAUTION with the safety messages. The appropriate signal word for each has been selected using the following guidelines:



DANGER: Indicates an imminently hazardous situation that, if not avoided, will result in death or serious injury. This signal word is to be limited to the most extreme situations typically for machine components which, for functional purposes, cannot be guarded.



WARNING: Indicates a potentially hazardous situation that, if not avoided, could result in death or serious injury, and includes hazards that are exposed when guards are removed. It may also be used to alert against unsafe practices.



CAUTION: Indicates a potentially hazardous situation that, if not avoided, may result in minor or moderate injury. It may also be used to alert against unsafe practices.



GENERAL SAFETY GUIDELINES

Safety of the operator is one of the main concerns in designing and developing a new piece of equipment. Designers and manufacturers build in as many safety features as possible. However, every year many accidents occur which could have been avoided by a few seconds of thought and a more careful approach to handling equipment. You, the operator, can avoid many accidents by observing the following precautions in this section. To avoid personal injury, study the following precautions and insist those working with you, or for you, follow them.

Replace any CAUTION, WARNING, DANGER or instruction safety decal that is not readable or is missing. Location of such decals are indicated in this booklet.

Do not attempt to operate this equipment under the influence of drugs or alcohol.

Review the safety instructions with all users annually.

This equipment is dangerous to children and persons unfamiliar with its operation. The operator should be a responsible adult familiar with farm machinery and trained in this equipment's operations. **Do not allow persons to operate or assemble this unit until they have read this manual and have developed a thorough understanding of the safety precautions and of how it works.**

To prevent injury or death, use a tractor equipped with a Roll Over Protective System (ROPS). Do not paint over, remove or deface any safety signs or warning decals on your equipment. Observe all safety signs and practice the instructions on them.

Never exceed the limits of a piece of machinery. If its ability to do a job, or to do so safely, is in question - **DON'T TRY IT.**



SAFETY DECAL CARE

- Keep safety signs clean and legible at all times.
- Replace safety signs that are missing or have become illegible.
- Replaced parts that displayed a safety sign should also display the current sign.
- Safety signs are available from your Distributor or Dealer Parts Department or the factory.

How to Install Safety Signs:

- Be sure that the installation area is clean and dry.
- Decide on the exact position before you remove the backing paper.
- Remove the smallest portion of the split backing paper.
- Align the decal over the specified area and carefully press the small portion with the exposed sticky backing in place.
- Slowly peel back the remaining paper and carefully smooth the remaining portion of the decal in place.
- Small air pockets can be pierced with a pin and smoothed out using the piece of decal backing paper.



BEFORE OPERATION

- Carefully study and understand this manual.
- Do not wear loose-fitting clothing, which may catch in moving parts.
- Always wear protective clothing and substantial shoes.
- Assure that all tires are inflated evenly.
- Give the unit a visual inspection for any loose bolts, worn parts or cracked welds, and make necessary repairs. Follow the maintenance safety instructions included in this manual.
- Be sure that there are no tools lying on or in the equipment.
- Do not use the unit until you are sure that the area is clear, especially of children and animals.

- Don't hurry the learning process or take the unit for granted. Ease into it and become familiar with your new equipment.
- Practice operation of your equipment and its attachments. Completely familiarize yourself and other operators with its operation before using.
- Use a tractor equipped with a Roll Over Protective System (ROPS) and fasten your seat belt prior to starting the engine.
- The manufacturer does not recommend usage of tractor with ROPS removed.
- Move tractor wheels to the widest recommended settings to increase stability.
- Securely attach to towing unit. Use a high strength, appropriately sized hitch pin with a mechanical retainer and attach safety chain.
- Do not allow anyone to stand between the tongue or hitch and the towing vehicle when backing up to the equipment.



DURING OPERATION

- Children should not be allowed on the product.
- Clear the area of small children and bystanders before moving the feeder.
- If using a towing unit, securely attach feeder by using a hardened 3/4" pin, a metal retainer, and safety chains if required. Shift towing unit to a lower gear before going down steep downgrades, thus using the engine as a retarding force. Keep towing vehicle in gear at all times. Slow down for corners and rough terrain.
- Make sure you are in compliance with all local and state regulations regarding transporting equipment on public roads and highways. Lights and slow moving signs must be clean and visible by overtaking or oncoming traffic when feeder is transported.
- Beware of bystanders, **particularly children!** Always look around to make sure that it is safe to start the engine of the towing vehicle or move the unit. This is particularly important with higher noise levels and quiet cabs, as you may not hear people shouting.
- **NO PASSENGERS ALLOWED** - Do not carry passengers anywhere on, or in, the tractor or equipment, except as required for operation.
- Keep hands and clothing clear of moving parts.
- Do not clean, lubricate or adjust your equipment while it is moving.
- When halting operation, even periodically, set the tractor or towing vehicle brakes, disengage the PTO, shut off the engine and **remove the ignition key.**
- Be especially observant of the operating area and terrain - watch for holes, rocks or other hidden hazards. Always inspect the area prior to operation.

- **DO NOT** operate near the edge of drop-offs or banks.
- **DO NOT** operate on steep slopes as overturn may result.
- Operate up and down (not across) intermediate slopes. Avoid sudden starts and stops.



HIGHWAY AND TRANSPORT OPERATIONS

- Adopt safe driving practices:
 - ⇒ Keep the brake pedals latched together at all times. **NEVER USE INDEPENDENT BRAKING WITH MACHINE IN TOW AS LOSS OF CONTROL AND/OR UPSET OF UNIT CAN RESULT.**
 - ⇒ Always drive at a safe speed relative to local conditions and ensure that your speed is low enough for an emergency stop to be safe and secure. Keep speed to a minimum.
 - ⇒ Reduce speed prior to turns to avoid the risk of overturning.
 - ⇒ Avoid sudden uphill turns on steep slopes.
 - ⇒ Always keep the tractor or towing vehicle in gear to provide engine braking when going downhill. Do not coast.
 - ⇒ Do not drink and drive!
- Comply with state and local laws governing highway safety and movement of farm machinery on public roads.
- Use approved accessory lighting flags and necessary warning devices to protect operators of other vehicles on the highway during daylight and nighttime transport. Various safety lights and devices are available from your dealer.
- The use of flashing amber lights is acceptable in most localities. However, some localities prohibit their use. Local laws should be checked for all highway lighting and marking requirements.
- When driving the tractor and equipment on the road or highway under 40 kph (20 mph) at night or during the day, use flashing amber warning lights and a slow moving vehicle (SMV) identification emblem.
- Plan your route to avoid heavy traffic.
- Be a safe and courteous driver. Always yield to oncoming traffic in all situations, including narrow bridges, intersections, etc.
- Be observant of bridge loading ratings. Do not cross bridges rated lower than the gross weight as which you are operating.

- Watch for obstructions overhead and to the side while transporting.
- Always operate equipment in a position to provide maximum visibility at all times. Make allowances for increased length and weight of the equipment when making turns, stopping the unit, etc.
- Pick the most level possible route when transporting across fields. Avoid the edges of ditches or gullies and steep hillsides.
- Be extra careful when working on inclines.
- Maneuver the tractor or towing vehicle at safe speeds.
- Avoid overhead wires or other obstacles. Contact with overhead lines could cause serious injury or death.
- Avoid loose fill, rocks and holes; they can be dangerous for equipment operation or movement.
- Allow for unit length when making turns.
- Operate the towing vehicle from the operator's seat only.
- Never stand alongside of unit with engine running or attempt to start engine and/or operate machine while standing alongside of unit.
- Never leave running equipment attachments unattended.
- As a precaution, always recheck the hardware on equipment following every 100 hours of operation. Correct all problems. Follow the maintenance safety procedures.

PLEASE READ BEFORE FIRST USE OF ROTARY TILLER

Before beginning operation, check oil and grease points.

Note: Gearboxes are shipped with high performance gear grease, add indicated lubricants.

Oil Level:

| | |
|----------------------|--|
| Center Gearbox: | Level indicated on dipstick (SAE 90) |
| Side Gear drive | Fill to oil drain plug on lower front of cover (SAE 140) |
| Right Rotor Bearing: | Grease if cap has grease nipple. Otherwise fill to side drain plug. (SAE 90 OR SAE 140) |

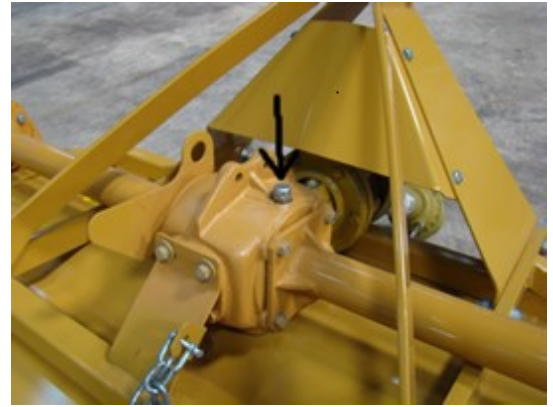
Use Grade II tube grease for ALL grease fittings. It is important to NOT overfill the gearbox. Doing so could potentially damage the oil seals and the gearbox; thereby voiding the gearbox warranty.

Steps to Properly Apply grease to tiller gearbox.

1. Be sure that the tiller is stable and on level ground.
2. Locate 1/2" Pipe Plug with dipstick on the top of the center gearbox and remove, then fill gearbox with gear oil until the gearbox is half full. The proper oil level is approximately 1 1/4" from the bottom of the stick. Replace the Pipe Plug tightly back on the gearbox and wipe off any spilt oil (Refer to Pictures A and B).
3. Locate 1/2" Pipe Plug on the top of the side gearbox and the Check Plug on the inside of the side gearbox (Refer to Picture C) and remove see if oil comes out of the Check Plug opening. If oil comes out, replace the Check Plug and go directly to Step 5; if oil does not come out continue to Step 4.
4. Pour gear oil into the side gearbox until oil begins to come out of the Check Plug opening (Refer to Picture D).
5. Put the 1/2" Pipe Plug (on top of the side gearbox) and the 1/8" Check Plug (on the inside of the side gearbox) tightly back into place and wipe off any spilt oil (Refer to Picture E).
6. Put grease into the following spots:
 - Grease Fitting on the Out Board Hub (Refer to Picture C).
 - the two Grease Fittings on the Universal Joints on PTO.
 - the two Grease Fittings on the Safety Shield and the Inner Portion of the PTO (Refer to Picture F).



Picture A



Picture B



Picture C



Picture D



Picture E



Picture F

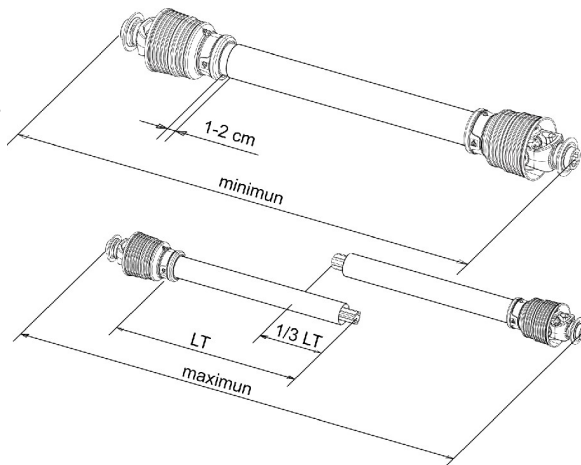
Attachment to the Tractor

Before attaching the equipment to the tractor, make sure that the ground is smooth and flat and that nobody is standing between the tractor and the tiller; slowly move the tractor towards the tiller by aligning the tractor lifter arms with the two tiller coupling side pins; turn the engine off and pull the brake. Then attach the Rotary Tiller to the tractor's Category 1 Three Point Hitch according to the description in the Operator's Manual of the Tractor.

CONNECTING THE PTO SHAFT

It is important to make sure that the RPM rating and the direction of rotation match those of the tractor. Carefully read the PTO shaft and tractor instructions. Next you will need to determine if the PTO Shaft needs to be shortened to fit your tractor. To check this, fully extend the PTO shaft and make sure that the plastic pipes overlap by 6 inches or less. Next retract the PTO Shaft so that the clearance is from 1-2 cm.

Check that the PTO shaft min. and max. length are within the parameters of the machine-tractor coupling. Should problems arise, contact your dealer. After the installation, anchor the PTO shield to the tractor and machine using the special chains; make sure that it turns smoothly. If the PTO shaft is equipped with safety devices, e.g. torque limiters or free-wheel devices, install them on the operative machine side. For the use and maintenance of the PTO shaft, please refer to the relevant manual.



Slip clutches have adjustable torque settings. The torque setting varies with the different compression of each spring. All the springs should have an equal amount of compression.

IMPORTANT: Do not over-tighten the compression nuts as this may impair performance or cause premature wearing of the slip clutch.

Caution: Slip Clutches may become hot. Do Not Touch. Keep the slip clutch area clear of an material that may catch fire.

Slip Clutch adjustments

Slip Clutch must be adjusted before first use or after a storage period.

1. Using a marker, scribe a line across the exposed edges of the clutch plate and friction discs.
2. Back off compression nuts to free friction discs by turning each nut *exactly* 2 revolutions.
3. Start the tractor and run the driveline at a low idle to slip the friction discs. This will remove the dirt, corrosion and surface floss from the clutch plate faces.
4. Disengage PTO, shut down tractor and wait for all components to come to a complete stop.
5. Inspect the clutch and ensure that the scribed markings on the disc and plates have changed position. If any two marks are still aligned, this is an indication that these discs have not slipped. It may be necessary to completely disassemble the clutch to free them up.
6. After ensuring all discs are free, tighten the compression nuts, uniformly, *exactly* 2 revolutions to reset the clutch original pressure.

Working Depth Adjustment

It is necessary to perform all maintenance work on the Rotary Tiller before every use as well as clearly understanding the safety information. **Remember to NEVER make any adjustments to the Rotary Tiller while the tractor is running.**

Allowing the tractor engine OR rotary tiller to stall or bog down will cause unnecessary wear on both the tiller and the tractor. In the event that this happens, decrease speed and raise the tilling depth of the tiller. NEVER ATTEMPT TO REMOVE OBJECTS FROM ROTOR BLADES WHILE TRACTOR IS RUNNING AND BLADES ARE STILL MOVING.

Damage could be caused to the Rotary Tiller if the speed is too fast. Also NEVER try to turn or go in reverse with the PTO engaged and the tiller in the ground.

1. Once the Rotary Tiller is attached to the tractor, with the tractor lift arms adjusted so that the rotor bar of the tiller is parallel with the ground.
2. Raise the tiller and put appropriate support blocks under. Now, adjust the skids so that you have your desired till depth and the tiller can till the same depth on each side. Also adjust the back gate with the chain until you have the preferred opening for mulching for your use. Next, you can raise the tiller, remove the support blocks and place the tiller onto the ground.
3. Let your tractor idle and slightly lift the tiller off the ground, engage the PTO and gradually increase the RPM to 540 (PTO RPM), the speed which the Rotary Tiller is designed to run at. Putting the tractor into a lower gear and beginning to move forward, slowly lower the tiller and allow the blades to gradually engage the soil.
4. It is highly recommended that you clean all the debris from the blades after every use, as well as replace any missing or unreadable safety decals. Store tiller in a dry environment.

Tailgate adjustment

The tailgate can be adjusted to help smooth and compact the tilled ground. Release the chain and secure to the desired height.

Start up

After making the necessary adjustments, lower the rotary tiller until the blades are a couple of inches from the ground. Engage the PTO and slowly lower the tiller to begin working.

Removal and Storage

After finishing, remove the rotary tiller from the tractor.

1. Put the PTO driveline in a safe location so it will not become damaged.
2. Clean and dry the equipment.
3. Replace any damaged or worn parts.
4. Check all bolts and nuts for tightness.
5. Lubricate and protect the machine from the elements.



Maintenance

It is critical to properly maintain your Rotary Tiller and which is entirely your responsibility. Periodically checking and maintaining the optimum gear oil level is a must.

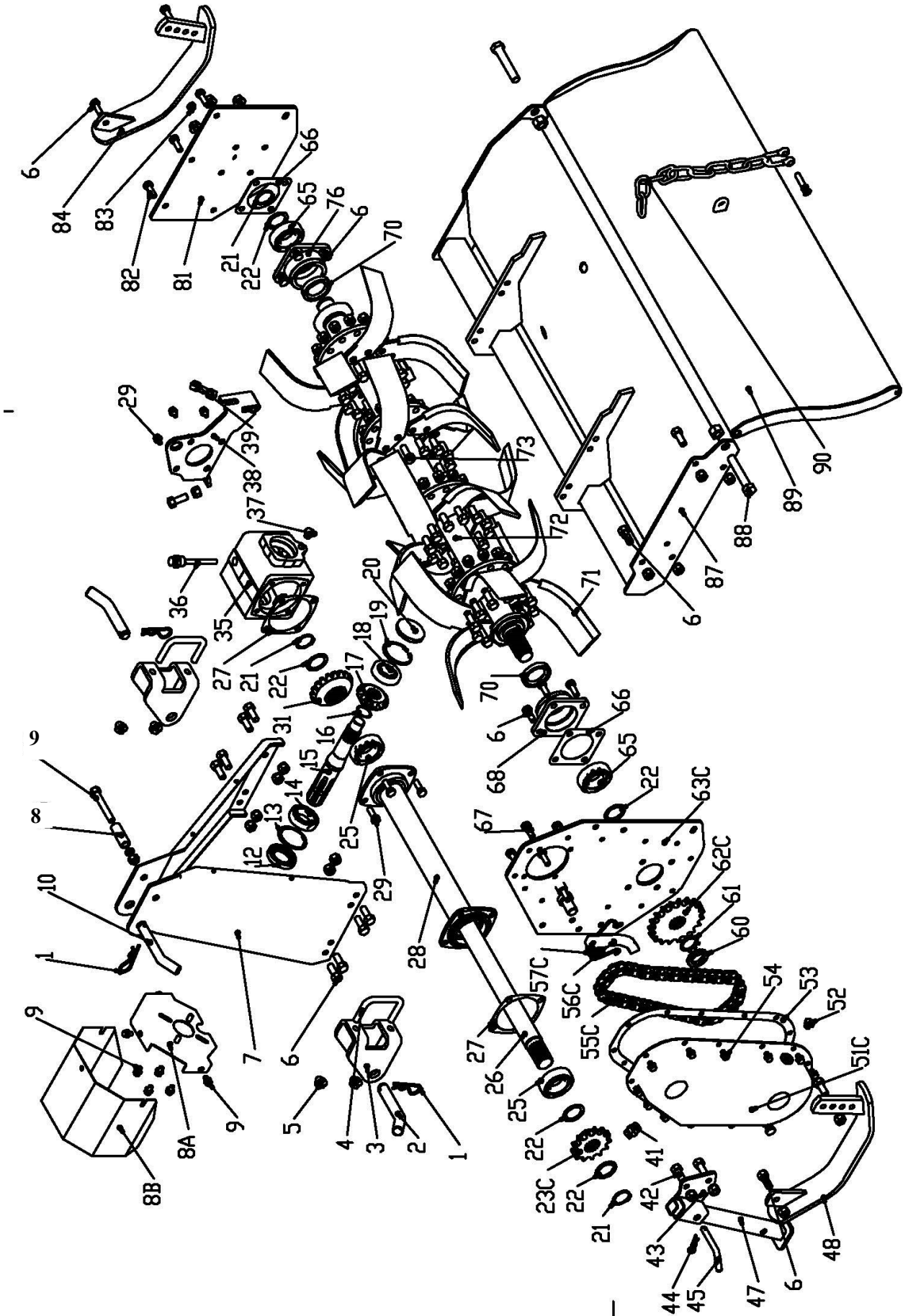
Every 8 Working Hours, please grease:

- Out-Board hub
- PTO Shaft universal joints
- PTO Shaft safety shield
- PTO Shaft telescoping surface

DO NOT GREASE SLIP CLUTCH ASSEMBLY.

Check all the nuts and bolts so that they are in place and well-secured as well as checking the tiller blades for any possible cracks or breaks before every use.

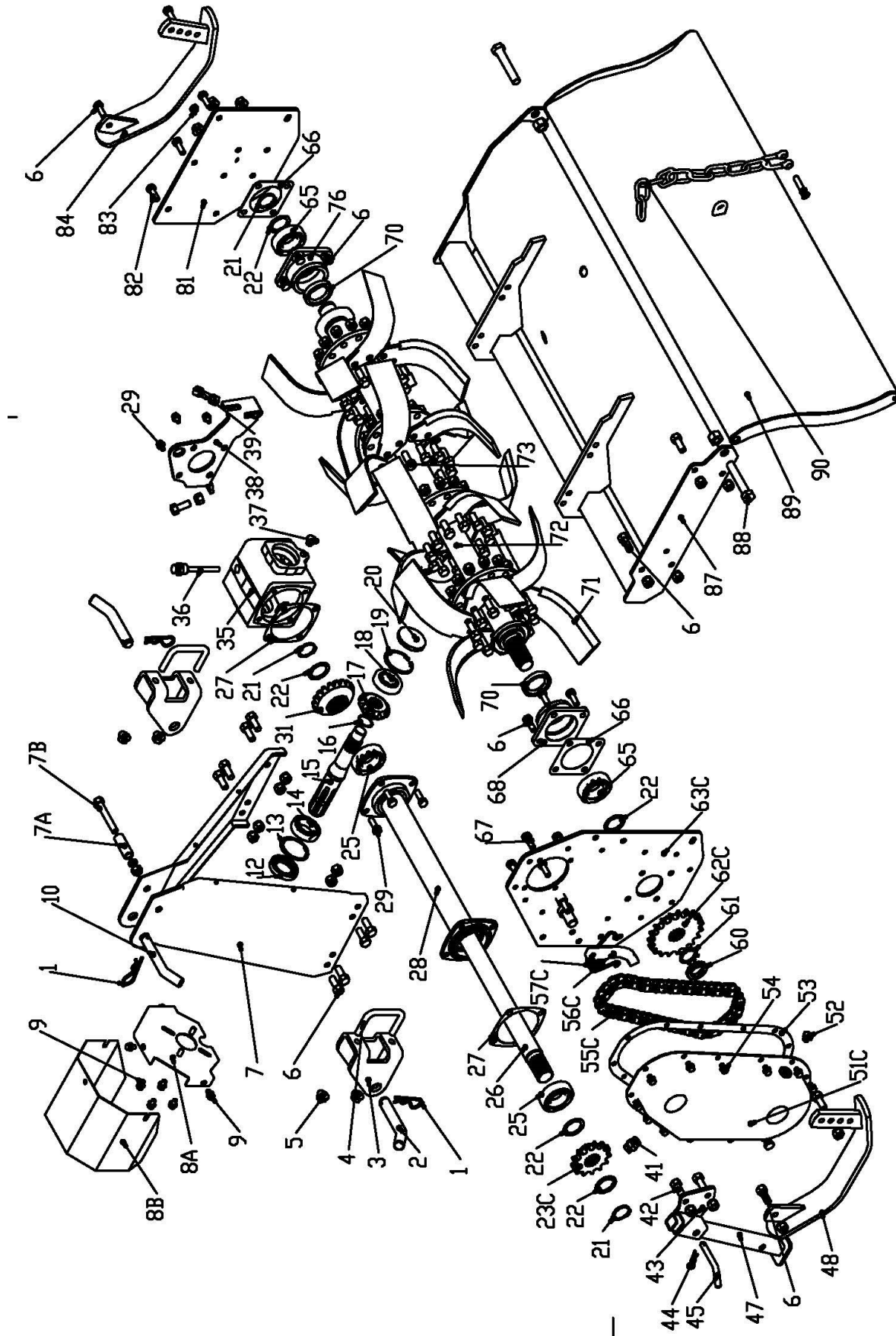
TC Rotary Tiller



TC Rotary Tiller

| Position | Part # | ... | Description |
|----------|---------------|-----|---------------------------------|
| 1 | RC4 | | M4 "R" Clip |
| 2 | YT1066010204 | | Hitch Pin |
| 3 | TX0202 | | Lower Hitch Bracket |
| 4 | TX0203 | | "U" Bolt, Lower Hitch Bracket |
| 5 | NM12125 | | Nut M12 x 1.25 |
| 6 | BM101530 | | Bolt- M10 x 1.5 x 30 |
| 7 | TC010102R | | A Frame - Right side |
| 7 | TC010102L | | A Frame - Left side |
| 8 | TC0101 | | Spacer - A Frame |
| 9 | BM1212585 | | Bolt M12 x 1.25 x 85 |
| 8 | | | Gearbox Shielding (complete) |
| 9 | BM0812516 | | Bolt M8 x 16 |
| 10 | YT1066010202 | | Top Hitch Pin |
| 12 | OS356210 | | Oil Seal M35 x 62 x 10 |
| 13 | SRI-62 | | Snap Ring M62 Internal |
| 14 | B6007 | | Bearing 6007 |
| 15 | TX0307 | | Input Shaft |
| 16 | SRE-30 | | Snap Ring M30 External |
| 17 | TX0303 | | Pinion Gear |
| 18 | B30305 | | Bearing 30305 |
| 19 | SRI-60 | | Snap Ring M60 Internal |
| 20 | TX0309 | | Gearbox Cap |
| 21 | SRE-34 | | Snap Ring M34 External |
| 22 | TX0402 | | Shim |
| | TX0401 | | Shim |
| 23C | TX0507-C | | Top Gear / Sprocket |
| 25 | B6207-2RS | | Bearing 6207-2RS |
| 26 | TX0304-40 | | Drive Shaft TC-040 |
| 26 | TX0304-50 | | Drive Shaft TC-050 |
| 26 | TX0304-60 | | Drive Shaft TC-060 |
| 27 | TX0306 | | Gasket |
| 28 | TX0301-40 | | Drive Shaft Tube Housing TC-040 |
| 28 | TX0301-50 | | Drive Shaft Tube Housing TC-050 |
| 28 | TX0301-60 | | Drive Shaft Tube Housing TC-060 |
| 29 | BM101525 | | Bolt- M10 x 1.5 x 25 |
| 31 | TX0304 | | Ring Gear |
| 35 | TX0302 | | Housing - Gearbox |
| 36 | YT10660303000 | | Gearbox Dip Stick |
| | TXGBC1001 | | Gearbox complete |

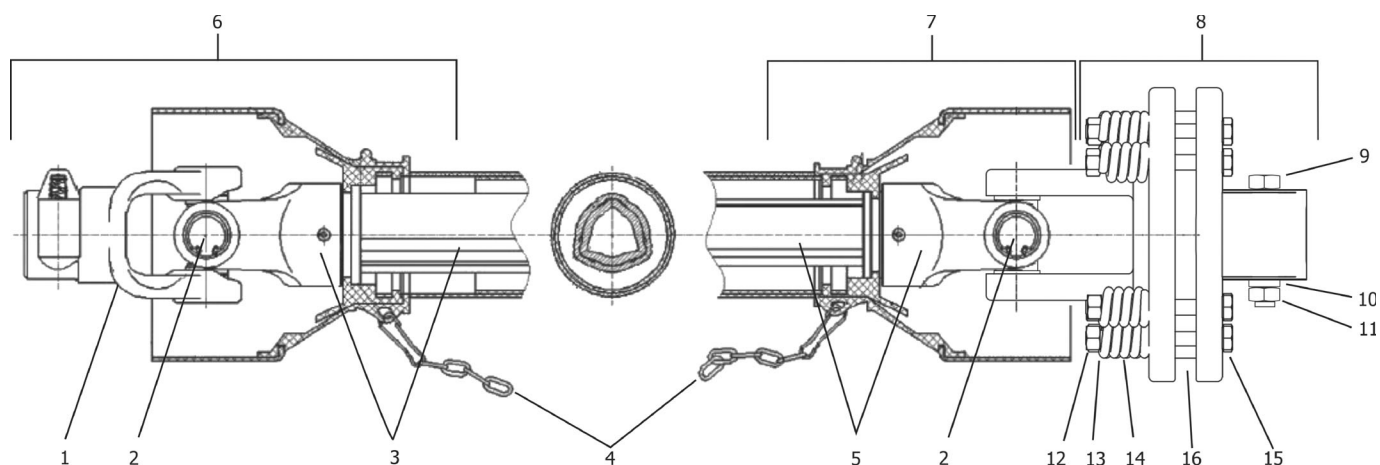
TC Rotary Tiller



TC Rotary Tiller

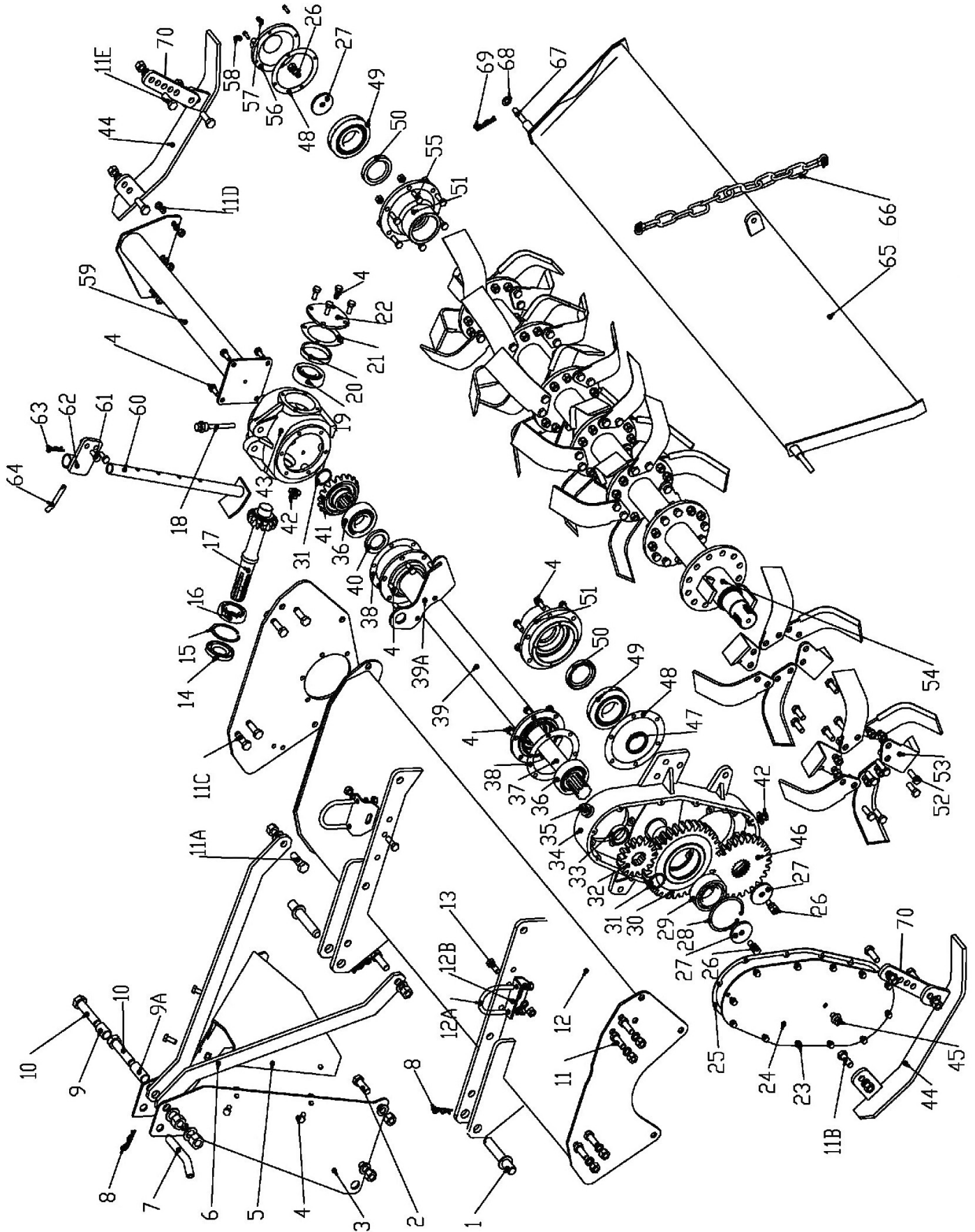
| Position | Part # | ... | Description |
|----------|--------------|-----|-----------------------------|
| 37 | OP12125 | | Oil Plug |
| 38 | TX0310 | | Lifting Hook |
| 39 | BM1217530 | | Bolt- M12 x 1.75 x 30 |
| 41 | OP1615B | | Breather cap |
| 42 | BM101525 | | Bolt- M10 x 1.5 x 25 |
| 43 | YT1066050200 | | Stand Bracket |
| 44 | RC3 | | M3 "R-Clip" |
| 45 | YT10660501 | | Pin - Stand |
| 47 | YT1066050100 | | Stand Leg |
| 48 | TX0601 | | Skid Weldment - Left |
| 51C | TX0501-C | | Side Drive Cover |
| 52 | OP12125 | | Oil Plug |
| 53 | TX0500 | | Gasket - Gear/Chain Cover |
| 54 | BM0812520 | | Bolt M8 x 1.25 x 20 |
| 55C | TX0515 | | Drive Chain |
| 56C | TX0517 | | Chain tensioner spring |
| 57C | TX0516 | | Chain tensioner |
| 60 | SNM3015 | | Spanner Nut M30 x 1.5 |
| 61 | SLW30 | | Star Lock Washer M30 |
| 62C | TX0509-C | | Bottom Sprocket |
| 63C | TX0305-C | | Side Panel - Left |
| 65 | B6207 | | Bearing 6207 |
| 66 | TX0406 | | Gasket |
| 70 | OS406210 | | Oil Seal - M40 x 62 x 10 |
| 71 | TX0404 | | Blade - Left |
| 71 | TX0405 | | Blade - Right |
| 72 | TX0401-40 | | Rotor - TC-040 |
| 72 | TX0401-50 | | Rotor - TC-050 |
| 72 | TX0401-60 | | Rotor - TC-060 |
| 73 | BM1212535 | | Blade Bolt- M12 x 1.25 x 35 |
| 76 | TX0403 | | Bearing Support |
| 81 | TX0201 | | Side Panel - Right |
| 82 | BM121525 | | Bolt M12 x 1.5 x 25 |
| 83 | GN0610 | | Grease Fitting |
| 84 | TX0602 | | Skid Weldment - Right |
| 87 | TX02-40 | | Frame Weldment TC-040 |
| | TX02-50 | | Frame Weldment TC-050 |
| | TX02-60 | | Frame Weldment TC-060 |
| 88 | BM162090 | | Bolt- M16 x 2.0 x 90 |
| 89 | TX07-40 | | Tailgate TC-040 |
| | TX07-50 | | Tailgate TC-050 |
| | TX07-60 | | Tailgate TC-060 |
| 90 | TX01 | | Tailgate Chain assembly |

PTO Shaft - TC



| Item | Part # | Description | Qty. |
|------|------------|---|------|
| 1 | DP1075-40 | PTO Yoke - Series 40 | 1 |
| 2 | DP1076-40 | Cross and Bearings - Series 40 | 2 |
| 3 | DP1079-30 | Female Yoke and Tube (tractor end) - Series 40 | 1 |
| 4 | 5SB3007 | Safety chain | 2 |
| 5 | DP1078-30 | Male Yoke and Tube (implement end) - Series 40 | 1 |
| 6 | DP1074F-30 | Complete Female End PTO Shielding (tractor end) | 1 |
| 7 | DP1074M-30 | Complete Male End PTO Shielding (implement end) | 1 |
| 8 | DP1098-30 | Slip clutch complete 150mm clutch | 1 |
| 9 | BM1217565 | Bolt HH M12-1.75x65 (8.8) | 1 |
| 10 | LNM12175 | Nut lock M12-1.75 | 1 |
| 11 | FW12 | Washer flat M12 | 1 |
| 12 | LNM1015 | Nut lock M10-1.50 | 8 |
| 13 | FW10 | Washer flat M10 | 8 |
| 14 | 1215012-30 | Spring - slip clutch | 8 |
| 15 | BM101585 | Bolt HH 10-1.50x85 | 8 |
| 16 | 180-510-30 | Friction disc - 4-3/4" OD | 2 |
| - | 147120 | Complete PTO - Series 40 - 150mm Slip Clutch | 1 |

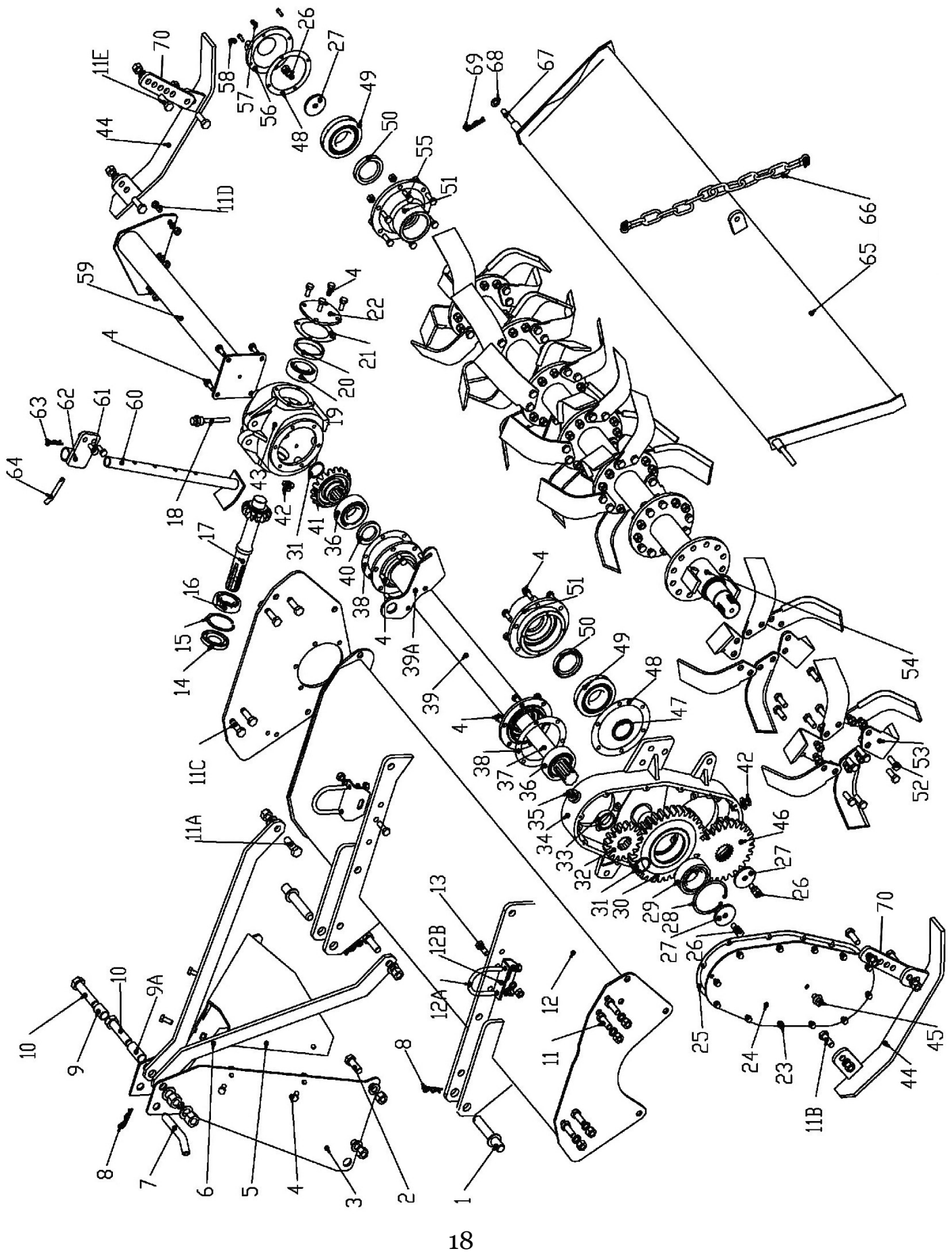
RT Rotary Tiller



RT Rotary Tiller

| Position | Part # | ... | Description |
|----------|--------------|-----|-------------------------------|
| 1 | CT20114 | | Hitch Pin (Lower Hitch Block) |
| 2 | BM161545 | | Bolt - M16 x 1.5 x 45 |
| 3 | CT20103 | | A Frame - Right |
| | CT20102 | | A Frame - Left |
| 4 | BM101525 | | Bolt - M10 x 1.5 x 25 |
| 5 | CT20105 | | Gearbox Shielding (complete) |
| 6 | CT20101 | | Lift Arm Brace |
| 7 | YT1066010202 | | Top Hitch Pin |
| 8 | RC4 | | M4 "R" Clip |
| 9 | CT20106 | | Top Hitch Bushing |
| 9A | CT20107 | | Top Hitch Bushing |
| 10 | BM1825110 | | Bolt - M18 x 2.5 x 110 |
| 11 | BM142040 | | Bolt- M14 x 2.0 x 40 |
| 12 | CT201174 | | Frame Weldment - RT4 |
| | CT201175 | | Frame Weldment - RT5 |
| | CT201176 | | Frame Weldment - RT6 |
| | CT201177 | | Frame Weldment - RT7 |
| 14 | OS357210 | | Oil Seal M35 x 72 x 10 |
| 15 | SRI-72 | | Snap Ring - M72 Internal |
| 16 | B6207 | | Bearing - Input shaft - Front |
| 17 | YT10660205 | | Input Shaft |
| 18 | YT1066020300 | | Gearbox Oil Plug (Dip Stick) |
| 19 | B6307 | | Bearing- 6307 |
| 20 | YT10660204 | | Spacer - Back GB |
| 21 | YT10660203 | | Gearbox Back Gasket |
| 22 | YT10660202 | | Gearbox Cap |
| 23 | BM0812520 | | Bolt- M8 X 1.25 X 20 |
| 24 | CT10419 | | Side Drive Cover |
| 25 | CT10422 | | Gasket - Side Gear/Chain Case |
| 26 | BM1217525 | | Bolt- M12 x 1.75 x 25 |
| 27 | CT10208 | | Retaining Washer |
| 28 | SRI-90 | | Snap Ring M90 Internal |
| 29 | B3210 | | Bearing 3210 |
| 30 | CT10416 | | Idler Gear |
| 31 | SRE-40 | | Snap Ring - M40 External |
| 32 | CT10417 | | Top Gear / Sprocket |
| 33 | KK580202 | | Spacer - Idler Gear |
| 34 | CT10421 | | Side Panel - Left |
| 35 | OP1615B | | Breather cap - M16 x 1.5 |
| 36 | B63082RS | | Bearing- 6308-2RS |
| 37 | CT103184 | | Drive Shaft - RT4 |
| | CT103185 | | Drive Shaft - RT5 |
| | CT103186 | | Drive Shaft - RT6 |
| | CT103187 | | Drive Shaft - RT7 |
| 38 | YT10660207 | | Gasket |

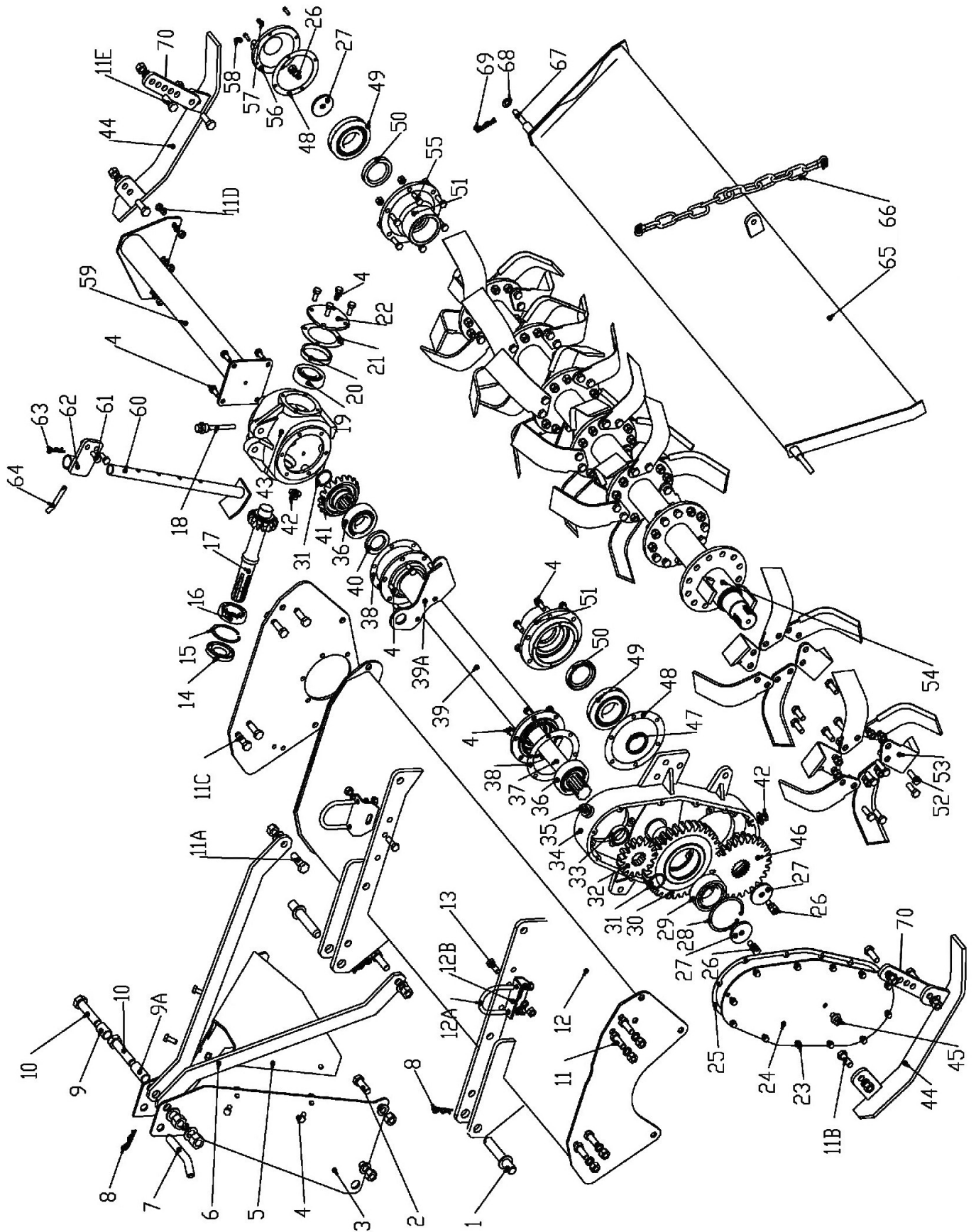
RT Rotary Tiller



RT Rotary Tiller

| Position | Part # | ... | Description |
|----------|------------|-----|---------------------------------|
| 39 | CT103224 | | Drive Shaft Tube Housing - RT4 |
| | CT103225 | | Drive Shaft Tube Housing - RT5 |
| | CT103226 | | Drive Shaft Tube Housing - RT6 |
| | CT103227 | | Drive Shaft Tube Housing - RT7 |
| 40 | OS406508 | | Oil Seal- M40 x 65 x 8 |
| 41 | YT10660206 | | Ring Gear |
| 42 | OP1415 | | Oil Plug M14 x 1.5 (Drain Plug) |
| 43 | YT10660201 | | Housing - Gearbox |
| | YTGBC1001 | | Complete Gearbox |
| 44 | CT10109 | | Skid Weldment - Left |
| | CT10110 | | Skid Weldment - Right |
| 45 | OP1215 | | Oil Plug- M12 x 1.5 |
| 46 | CT10418 | | Bottom Gear/Sprocket |
| 47 | | | Shim / Spacer |
| 48 | KK0405 | | Gasket - Rotor |
| 49 | B50233 | | Bearing - Rotor - Left Side |
| 49 | B50233 | | Bearing - Rotor - Right Side |
| 50 | OS558010 | | Oil Seal- M55 x 80 x 10 |
| 51 | CT10201 | | Bearing Support |
| 52 | BM141535 | | Blade Bolt - M14 x 1.5 x 35 |
| 53 | 34-78L | | Blade - Left |
| | 34-78R | | Blade - Right |
| | CT10108 | | Blade Bolt , Washer & Nut |
| 54 | CT101154 | | Rotor - RT4 |
| | CT101155 | | Rotor - RT5 |
| | CT101156 | | Rotor - RT6 |
| | CT101157 | | Rotor - RT7 |
| 55 | BM101530 | | Bolt- M10 x 1.5 x 30 |
| 56 | CT10202 | | End Cap - Rotor Right side |
| 57 | BM061020 | | Bolt- M6 x 1.0 x 20 |
| 59 | CT480202 | | Gearbox Support Tube - RT4 |
| | CT600202 | | Gearbox Support Tube - RT5 |
| | CT720202 | | Gearbox Support Tube - RT6 |
| | CT840202 | | Gearbox Support Tube - RT7 |
| 60 | KK58050100 | | Stand Leg |
| 61 | BM101530 | | Bolt- M10 x 1.5 x 30 |
| 62 | KK58050200 | | Stand Bracket |
| 63 | RC3 | | M3 R-Clip |
| 64 | YT10660501 | | Pin - Stand |
| 65 | CT20164 | | Tailgate RT4 |
| | CT20165 | | Tailgate RT5 |
| | CT20166 | | Tailgate RT6 |
| | CT20167 | | Tailgate RT7 |
| 66 | CT10111 | | Tailgate Chain assembly |
| 67 | CT101044 | | Rod - Tailgate RT4 |
| | CT101045 | | Rod - Tailgate RT5 |
| | CT101046 | | Rod - Tailgate RT6 |
| | CT101047 | | Rod - Tailgate RT7 |

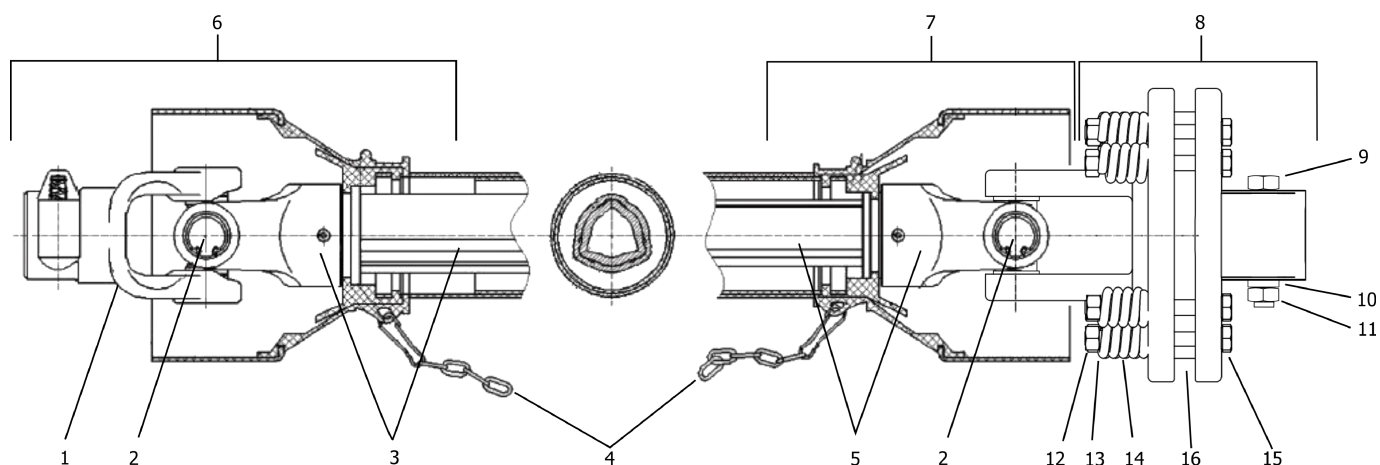
RT Rotary Tiller



RT Rotary Tiller

| Position | Part # | Description |
|-----------------|---------------|----------------------|
| 68 | FW12 | Washer, flat M12 |
| 69 | CP4x40 | Cotter pin – M4 x 40 |
| 70 | CT101068 | Skid bracket |

PTO Shaft - RT



| Item | Part # | Description | Qty. |
|------|------------|---|------|
| 1 | DP1075-40 | PTO Yoke - Series 40 | 1 |
| 2 | DP1076-40 | Cross and Bearings - Series 40 | 2 |
| 3 | DP1079-40 | Female Yoke and Tube (tractor end) - Series 40 | 1 |
| 4 | 5SB3007 | Safety chain | 2 |
| 5 | DP1078-40 | Male Yoke and Tube (implement end) - Series 40 | 1 |
| 6 | DP1074F-40 | Complete Female End PTO Shielding (tractor end) | 1 |
| 7 | DP1074M-40 | Complete Male End PTO Shielding (implement end) | 1 |
| 8 | DP1098-30 | Slip clutch complete 150mm clutch | 1 |
| 9 | BM1217565 | Bolt HH M12-1.75x65 (8.8) | 1 |
| 10 | LNM12175 | Nut lock M12-1.75 | 1 |
| 11 | FW12 | Washer flat M12 | 1 |
| 12 | LNM1015 | Nut lock M10-1.50 | 8 |
| 13 | FW10 | Washer flat M10 | 8 |
| 14 | 1215012-30 | Spring - slip clutch | 8 |
| 15 | BM101585 | Bolt HH 10-1.50x85 | 8 |
| 16 | 180-510-30 | Friction disc - 4-3/4" OD | 2 |
| - | 147121 | Complete PTO - Series 40 - 150mm Slip Clutch | 1 |

WARRANTY REGISTRATION FORM & INSPECTION REPORT

WARRANTY REGISTRATION

This form must be filled out by the dealer and signed by both dealer and customer at time of delivery.

Customer name _____ Dealer name _____
Address _____ Address _____
City, state, code _____ City, state, code _____

Phone number ()- -

Model _____ Serial Number _____ Delivery date _____

DEALER INSPECTION

_____ Farm level
_____ Wheel bolt tight
_____ Fasteners tight
_____ Chains adjusted
_____ Wiring harness connected
_____ Check tire pressures
_____ Lubricate machine

REPORT SAFETY

_____ All decals installed
_____ Reflectors, SMV clean
_____ Guards and shields installed
_____ Review operating and safety instructions

I have thoroughly instructed the buyer on the above-described equipment; review included the operator's manual content, equipment care, adjustments, safe operation and applicable warranty policy.

Date _____ Dealer's signature _____

The above equipment and operator's manual have been received by me, and I have been thoroughly instructed as to care, adjustments, safe operation and applicable warranty policy.

Date _____ Owner's signature _____

Mail to: LMC
1715 South Slappey Blvd
Albany, GA 31701

LIMITED WARRANTY

LMC warrants to the original purchaser of any new LMC equipment purchased from an authorized LMC dealer, that the equipment be free from defects in material and workmanship for a period of one (1) year for noncommercial, state, and municipalities' use, ninety (90) days for commercial use from date of retail sale. Warranty for rental purposes is thirty (30) days. The obligation of LMC Implements to the purchaser under this warranty is limited to the repair or replacement of defective parts.

Replacement or repair parts installed in the equipment covered by this limited warranty are warranted for ninety (90) days from the date of purchase of such part or to the expiration of the applicable new equipment warranty period, whichever occurs later. Warranted parts shall be provided at no cost to the user at an authorized LMC dealer during regular working hours. LMC reserves the right to inspect any equipment or parts which are claimed to have been defective in material or workmanship.

This limited warranty does not apply to and excludes wear items such as shear pins, tires, tubes knives, blades or other wear items. Oil or grease is not covered by this warranty.

All obligations of LMC under this limited warranty shall be terminated if:

- Proper service is not performed on the machine
- The machine is modified or altered in any way
- The machine is being used or has been used for purposes other than those for which the machine was intended.

DISCLAIMER OF IMPLIED WARRANTIES & CONSEQUENTIAL DAMAGES LMC's obligation under this limited warranty, to the extent allowed by law, is in lieu of all warranties, implied or expressed, including implied warranties of merchantability and fitness for a particular purpose and any liability for incidental and consequential damages with respect to the sale or use of the items warranted. Such incidental and consequential damages shall include but not be limited to: transportation charges other than normal freight charges; cost of installation other than cost approved by LMC; duty; taxes; charges for normal service or adjustment; loss of crops or any other loss of income; rental of substitute equipment, expenses due to loss, damage, detention or delay in the delivery.



1715 South Slappey Blvd
Albany, GA 31701
800-673-6369
www.lmcag.com