



DISK HARROW



**EXCLUSIVELY DEVELOPED
FOR AMERICAN FARMERS.**

PARTS CATALOG

TD390

DH72D DH84D DH96D

DISK SPACING 9"

Parts Catalog: 7.12.1048

Date: 04/14/2025

REVISION - 05

Disk Harrow Antoniosi



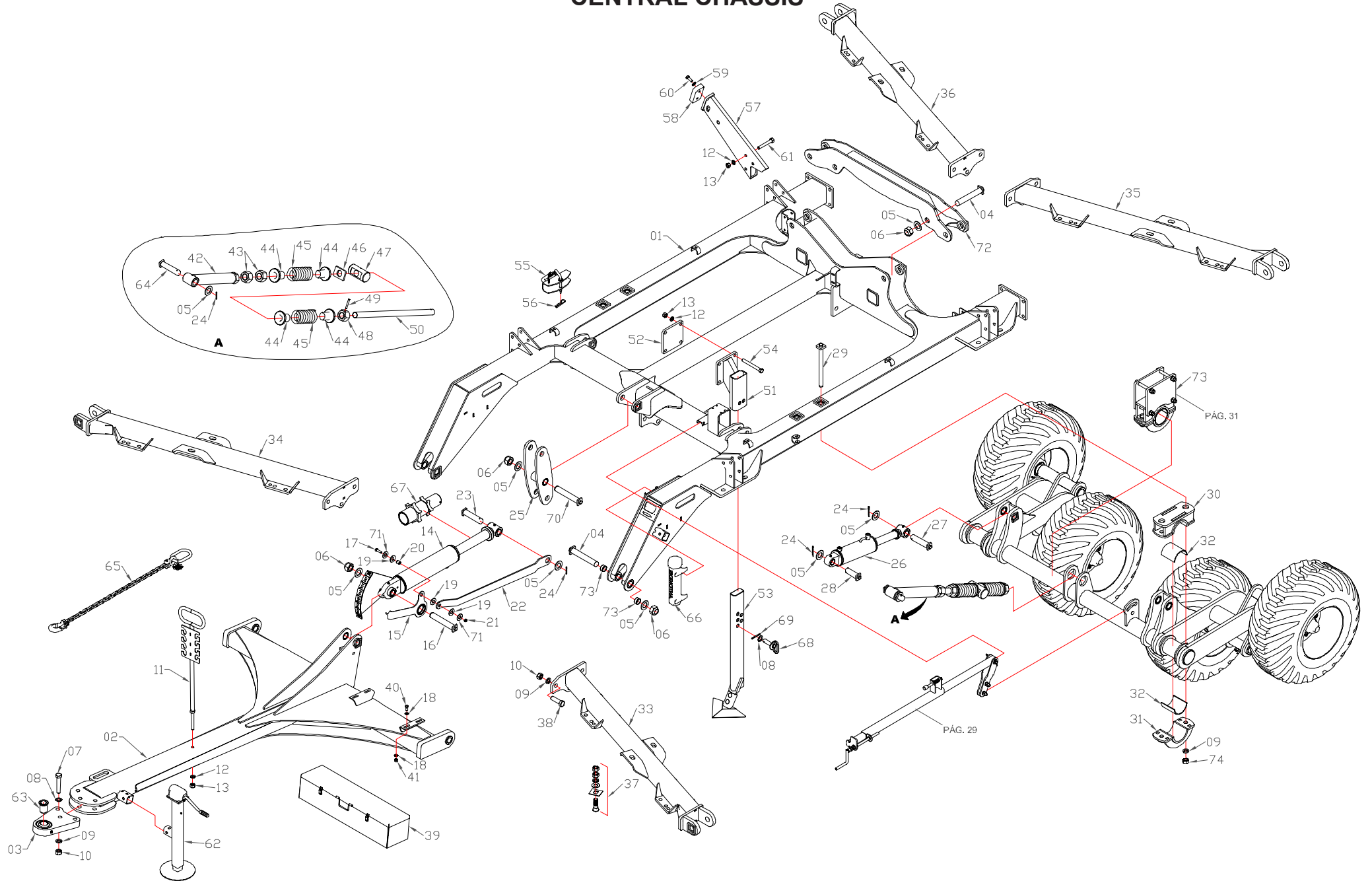
DISK HARROW

INDEX

PAGE	PRODUCT DESCRIPTION	PAGE	PRODUCT DESCRIPTION
04	Central Chassis	25	Bearing
05	Parts List	25	Parts List
06	Left Side Chassis	26	Cylinder With Leveling Scale / Central Wheel Cylinder
07	Parts List	26	Parts List
08	Right Side Chassis	27	Side Chassis Cylinder / Complete Central Hoe
09	Parts List	27	Parts List
10	Center Chassis Rear Mounting	28	Limiter Valve / Safety Valve Kit
11	Parts List	28	Parts List
12	Hydraulic System	29	Adjustment Arm Assembled
13	Parts List	29	Parts List
14	Complete Wheel Hub Without Axle	30	Disk Bearing Hex Screw / Crusher
14	Parts List	30	Parts List
15	Central Wheel	31	Complete Bearing For Fixing The Central Wheelset
15	Parts List	31	Parts List
16	Front Support Wheel Assembly	32	Stickers
16	Parts List	32	Parts List
17	Crushing Roller	33	Analytical Index
17	Parts List		
18	Complete Flashlight Support / Rod Limiter		
18	Parts List		
19	Front Center Disk Assembly		
19	Parts List		
20	Rear Center Disk Assembly		
20	Parts List		
21	Front Side Disk Assembly		
21	Parts List		
22	Rear Side Disk Assembly		
22	Parts List		
23	Disk Sludge Side Rear Chassis Groove		
23	Parts List		
24	Scraper / Keys		
24	Parts List		

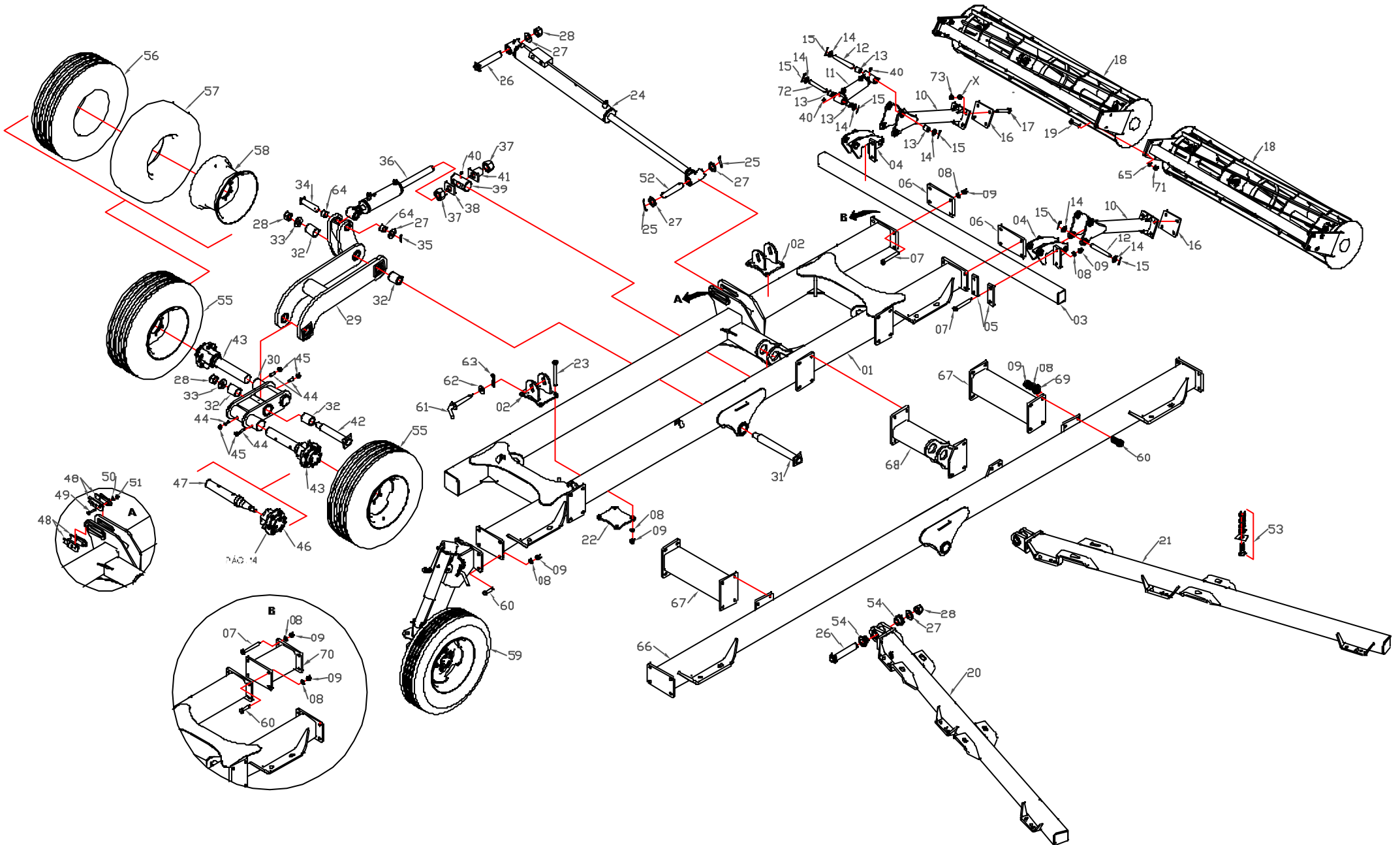
*The manufacturer reserves the right to make changes to this product without prior notice.

CENTRAL CHASSIS

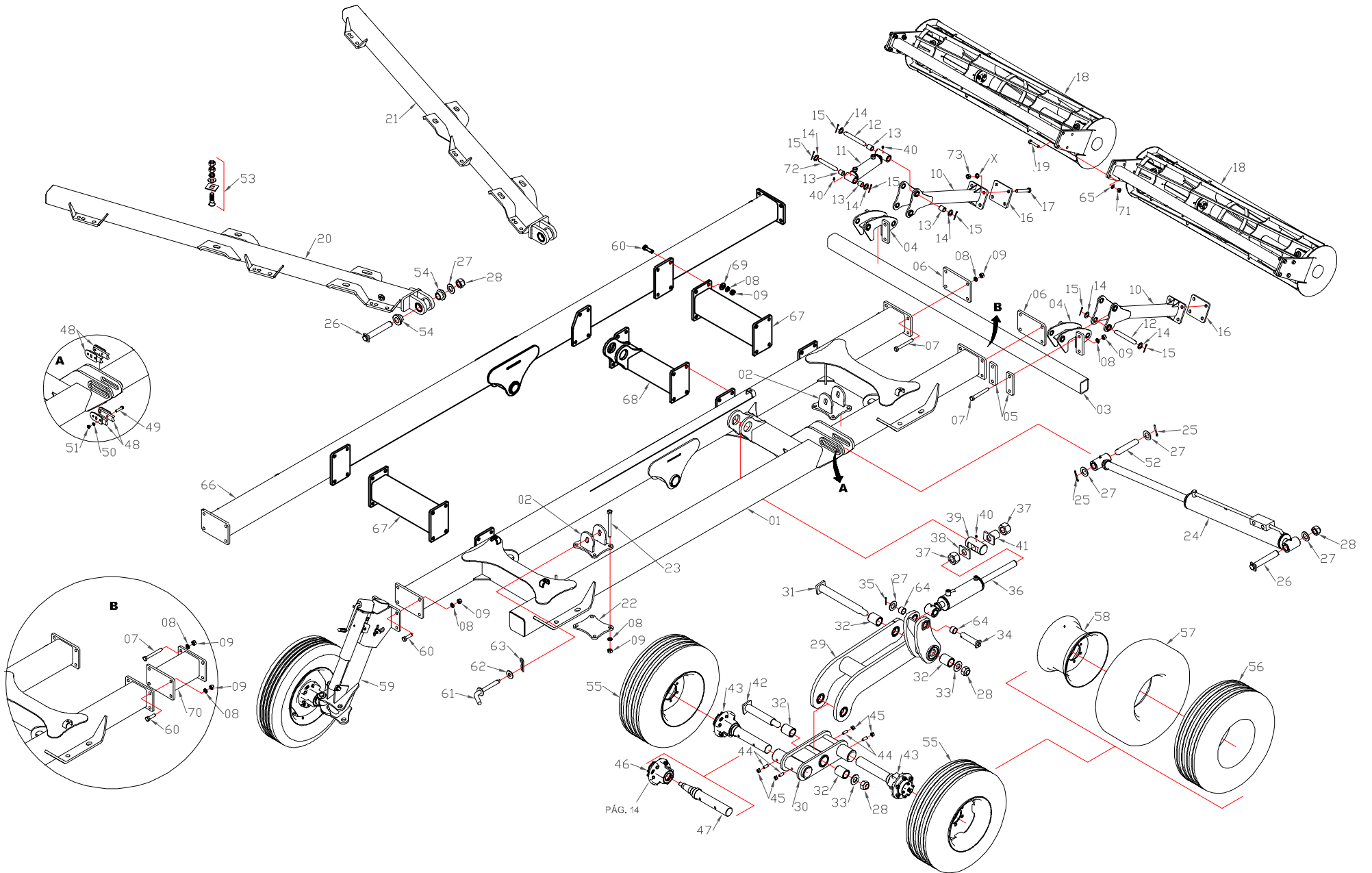


ITEM	CODE	DESCRIPTION	72D	84D	96D	ITEM	CODE	DESCRIPTION	72D	84D	96D
01	5.26.052	Central Chassis	01	01	01	42	5.12.1886	Leveling Control Spring Supplement.....	01	01	01
02	5.12.1875	Header.....	01	01	01	43	7.25.517	1.5/8" hex nut	02	02	02
03	5.27.334	Header connection ball joint	01	01	01	44	5.11.889	Spring guide bushing.....	04	04	
04	5.25.1428	Header fixing pin.....	02	02	04	44	5.11.982	Spring guide bushing.....			04
05	5.10.239	1.1/2" flat washer.....	10	10	12	45	7.22.718	Spring	02	02	
06	7.25.118	1.1/2" self-locking nut	04	04	06	45	7.22.778	Spring			02
07	7.25.269	1" x 5" hex screw.....	03	03	03	46	5.12.1912	Support plate	01	01	01
08	5.10.479	1" flat washer.....	04	04	04	47	5.11.883	Spring guide pin.....	01	01	01
09	7.10.009	1" pressure washer.....	09	09	09	48	5.25.1440	1.5/8" hex nut with hole	01	01	01
10	7.25.070	1" hex nut	09	09	09	49	7.25.645	Spring pin 10 x 70mm.....	01	01	01
11	5.28.1059	Hose support	01	01	01	50	5.14.878	Leveling control axis.....	01	01	01
12	7.10.007	3/4" pressure washer.....	17	17	17	51	5.28.1042	Central hoe support bracket.....	01	01	01
13	7.25.016	3/4" hex nut	17	17	17	52	5.12.1909	Hoe support fixing plate.....	01	01	01
14	5.12.1874	Hydraulic cylinder with leveling scale	01	01	01	53	5.18.003	Complete central hoe	01	01	01
15	5.18.004	Leveling scale indicator	01	01	01	54	7.25.984	3/4" x 6.1/2" hex screw	04	04	04
16	5.25.1431	Cylinder pin.....	01	01	01	55	5.29.1212	Transport lock.....	02	02	02
17	7.25.213	1/2" x 2" hex screw.....	01	01	01	56	7.29.009	Locking R.....	02	02	02
18	7.10.024	1/2" flat washer.....	04	04	04	57	5.11.912	Side frame stop	04	04	
19	5.10.470	Ø 23 x Ø 50mm washer.....	03	03	03	57	5.11.947	Smaller side frame stop.....			04
20	5.11.891	Bushing.....	01	01	01	58	5.29.1182	Side frame topper	04	04	04
21	7.25.025	1/2" self-locking nut	01	01	01	59	7.10.025	5/8" flat washer	08	08	08
22	5.11.890	Level indicator offset arm	01	01	01	60	7.25.468	5/8" x 1.1/2" hex screw	08	08	08
23	5.25.1453	Cylinder pin.....	01	01	01	61	7.25.436	3/4" x 5" hex screw	12	12	12
24	7.12.004	1/4" x 2.1/2" cotter pin	06	06	06	62	7.12.459	Lift assembly.....	01	01	01
25	5.14.877	Leveling control link.....	01	01	01	63	5.11.905	Header ball joint complement bushing	01	01	01
26	5.12.1869	Hydraulic cylinder	02	02	02	64	5.25.1450	Leveling system pin.....	01	01	01
27	5.25.1430	Wheelset cylinder rod pin	02	02	02	65	7.12.1024	Safety chain.....	01	01	01
28	5.25.1429	Wheel cylinder pin	02	02	02	66	7.28.025	Manual door support.....	01	01	01
29	5.25.1434	Wheel axle fixing pin.....	04	04	04	67	5.21.137	Header cylinder rod limiter.....	01	01	01
30	5.22.252	Central wheelset guide bearing.....	02	02	02	68	5.25.1448	Hoe fixing pin.....	01	01	01
31	5.22.253	Central wheel set fixing bearing	02	02	02	69	7.12.003	1/4" x 2" cotter pin	01	01	01
32	5.25.1446	Polyurethane wheelset plateo	04	04	04	70	5.25.1432	Leveling system link fixing pin	01	01	01
33	TAB 1	Left front center frame	01	01	01	71	5.10.480	Ø 13,5 x Ø 50mm washer.....	02	02	02
34	TAB 1	Right front center frame.....	01	01	01	72	5.12.2022	Cylinder support assembly			01
35	TAB 1	Front right central frame	01	01	01	73	7.11.285	Bushing.....	04	04	04
36	TAB 1	Rear right center frame.....	01	01	01						
37	7.25.577	1" x 3.1/2" french screw set.....	08	08	08	TAB 1			72 D	84 D	96 D
38	7.25.030	1" x 3.1/2" hex screw	06	06	06	Left front center frame			5.12.1935	5.12.1935	5.12.1993
39	5.12.1841	Tool box.....	01	01	01	Right front center frame			5.12.1937	5.12.1937	5.12.1995
40	7.25.034	1/2" x 1.1/4" hex screw.....	04	04	04	Front right central frame			5.12.1943	5.12.1943	5.12.1997
41	7.25.014	1/2" hex nut	04	04	04	Rear right center frame			5.12.1945	5.12.1945	5.12.1991

LEFT SIDE CHASSIS

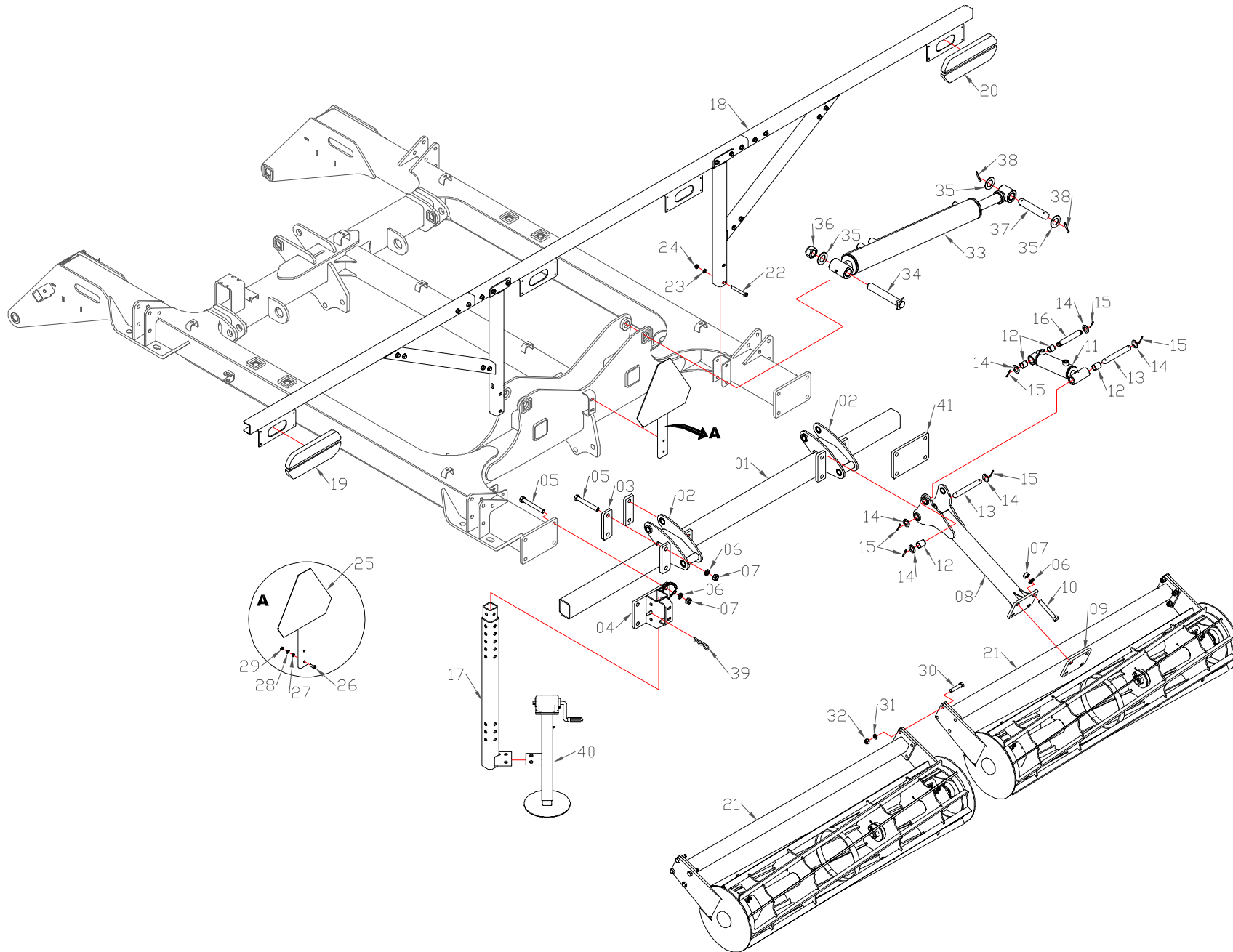


RIGHT SIDE CHASSIS



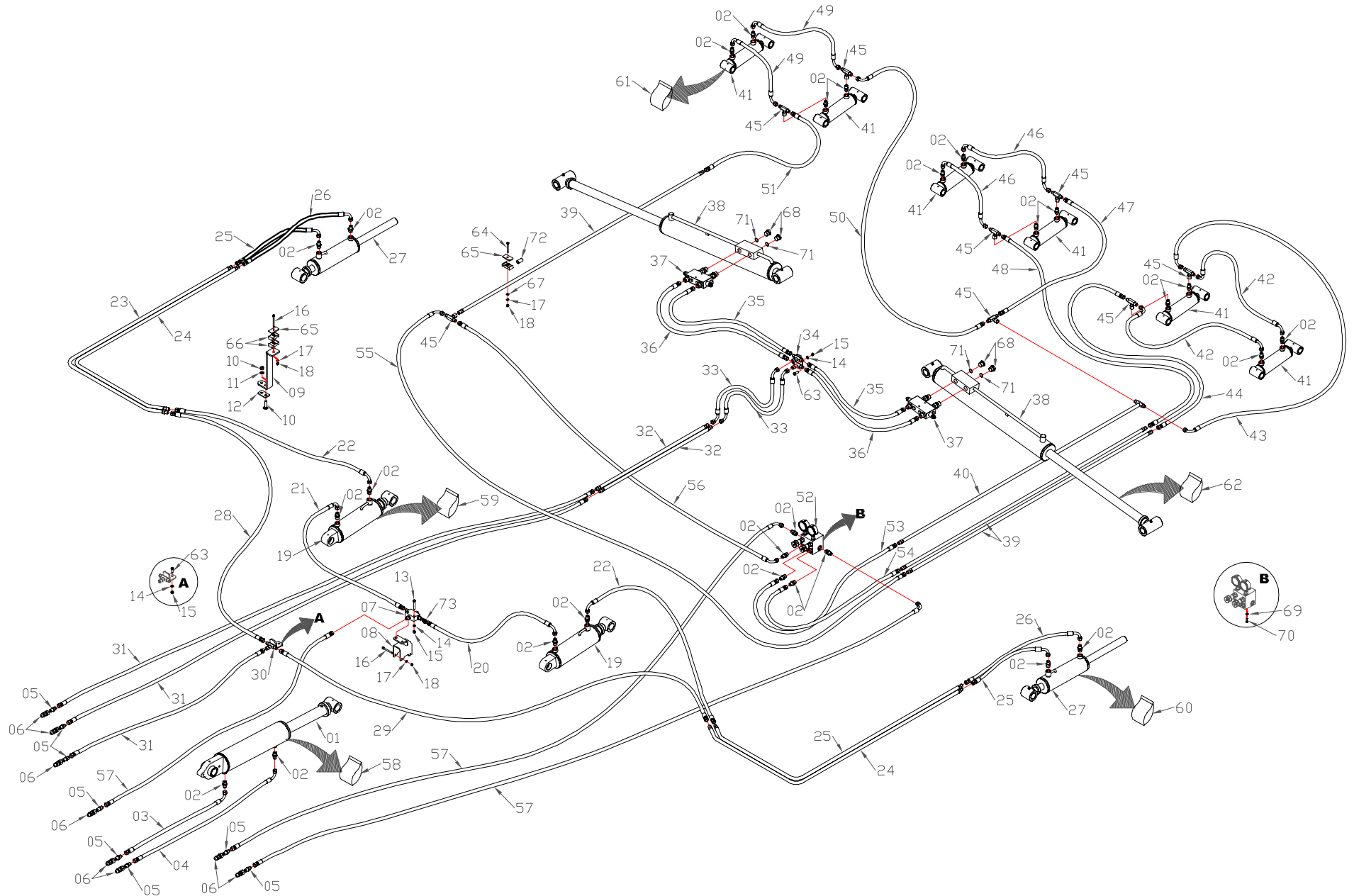
ITEM	CODE	DESCRIPTION	72D	84D	96D	ITEM	CODE	DESCRIPTION	72D	84D	96D
01	5.26.061	Right side frame	01	01	01	38	5.12.1912	Support plate	01	01	01
02	5.29.1181	Side frame lock	02	02	02	39	5.11.883	Spring guide pin	01	01	01
03	5.29.1214	Rectangular tube	01			40	7.16.017	1/8" straight grease fitting	04	04	04
03	5.29.1184	Rectangular tube		01	01	41	5.28.1044	Piston adjustment tube support	01	01	01
04	5.28.1036	Cylinder support	02	02	02	42	5.25.1427	Wheel fixing pin	01	01	01
05	5.12.1911	Support fixing plate	04	04	04	43	5.12.1883	Complete wheel hub	02	02	02
06	5.28.1056	Rear fixing shoe for the crusher roller	02	02	02	44	7.25.138	5/8" x 1.1/2" allen screw without head	04	04	04
07	7.25.670	3/4" x 5.1/2" hex screw	16	16	20	45	7.25.015	5/8" hex nut	04	04	04
08	7.10.007	3/4" pressure washer	32	32	60	46	5.12.1620	Complete wheel hub without axle	02	02	02
09	7.25.016	3/4" hex nut	32	32	60	47	5.14.870	Side wheel hub axle	02	02	02
10	5.11.879	Articulated arm for the crusher roller	02	02	02	48	5.21.138	Side frame limiter	04	04	04
11	7.12.1072	Hydraulic cylinder	02	02	02	49	7.25.447	1/2" x 2.1/4" hex screw	04	04	04
12	5.25.1436	Ø 25,4 x 203mm pin	04	04	04	50	7.10.005	1/2" pressure washer	04	04	04
13	7.11.290	Bushing	08	08	08	51	7.25.014	1/2" hex nut	04	04	04
14	5.10.356	1" flat washer	12	12	12	52	5.25.1459	Ø 38,10 x 267mm pin	01	01	01
15	7.12.003	1/4" x 2" cotter pin	12	12	12	53	7.25.577	1" x 3.1/2" french screw set	08	08	12
16	5.12.1910	Arm fixing plate	02	02	02	54	5.11.904	Smaller chassis joint bushing	04	04	04
17	7.25.436	3/4" x 5" hex screw	08	08	08	55	5.25.999	Complete tire 11L - 15	02	02	02
18	5.27.341	Crushing roller	02			56	7.25.423	Tire 11L - 15	02	02	02
18	5.27.329	Crushing roller		02	02	57	7.12.658	Air chamber	02	02	02
19	7.25.297	5/8" x 3" hex screw	04	04	04	58	7.27.277	Wheel	02	02	02
20	TAB 3	Right front side frame	01	01	01	59	5.12.1882	Front support wheel assembly	01	01	01
21	TAB 3	Rear right side frame	01	01	01	60	7.25.001	3/4" x 2.1/2" hex screw	04	04	32
22	5.12.1908	Lower lock plate	02	02	02	61	5.25.1449	Side frame lock pin	02	02	02
23	7.25.625	3/4" x 8" hex screw	08	08	08	62	5.10.479	Bumper washer	02	02	02
24	5.12.1932	Cylinder	01	01		63	7.29.389	Locking R	02	02	02
24	5.12.2201	Cylinder			01	64	7.11.008	Bushing	02	02	02
25	7.12.045	5/16" x 2.1/2" cotter pin	02	02	02	65	7.10.025	5/8" flat washer	04	04	04
26	5.25.1428	Hitch pin	03	03	03	66	5.12.2025	Right side frame complement			01
27	5.10.239	1.1/2" flat washer	06	06	06	67	5.28.1112	Frame complement fixing bracket			02
28	7.25.118	1.1/2" self-locking nut	05	05	05	68	5.28.1113	Right support for fixing the frame complement			01
29	5.12.1879	Right joint assembly	01	01	01	69	5.10.085	Ø20 x Ø48mm washer			24
30	5.14.868	Wheel fixing structure	01	01	01	70	5.28.1111	Deroster roller fixing support			01
31	5.25.1433	Hinge assembly fixing pin	01	01	01	71	7.25.229	5/8" self-locking nut	04	04	04
32	5.11.893	Bushing	04	04	04	72	5.25.1435	Ø 25,4 x 175mm pin	02	02	02
33	5.10.468	Ø 39 x Ø 75mm washer	02	02	02						
34	5.25.1430	Wheelset cylinder rod pin	01	01	01						
35	7.12.004	1/4" x 2.1/2" cotter pin	01	01	01						
36	7.12.1034	Hydraulic cylinder	01	01	01						
37	7.25.517	1.5/8" nut	02	02	02						
							TAB 3		72 D	84 D	96 D
							Right front side frame	5.12.1981	5.12.1939	5.12.2013	
							Rear right side frame	5.12.1983	5.12.1947	5.12.2019	

CENTER CHASSIS REAR MOUNTING



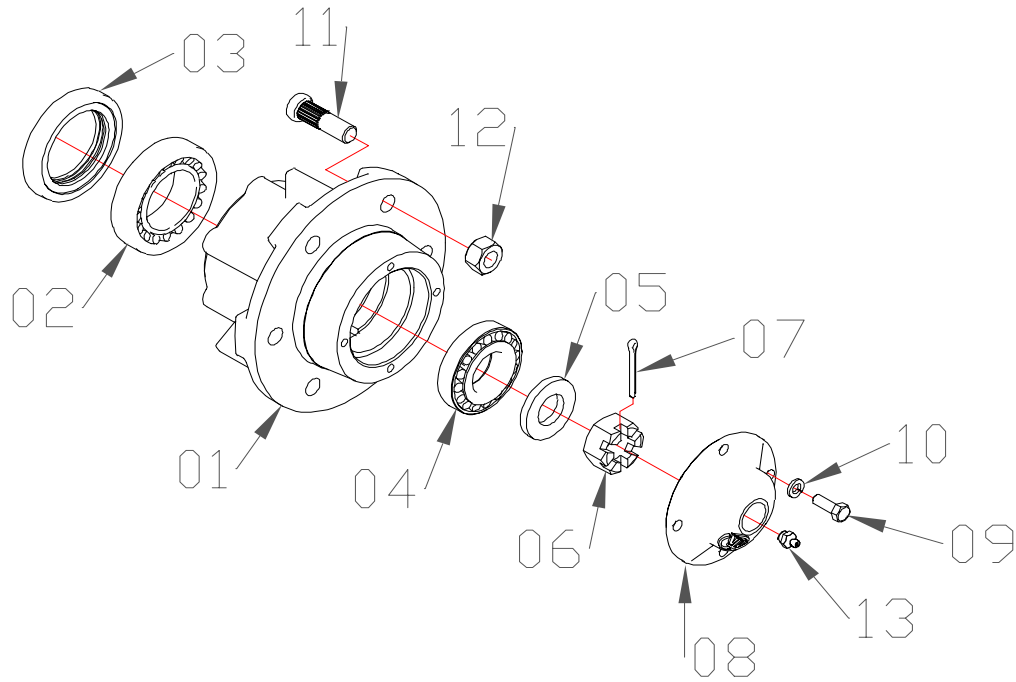
ITEM	CODE	DESCRIPTION	72D	84D	96D	ITEM	CODE	DESCRIPTION	72D	84D	96D
01	5.29.1184	Rectangular tube	01	01		36	7.25.118	1.1/2" self-locking nut	02	02	02
01	5.29.1217	Rectangular tube			01	37	5.25.1459	Ø 38,1 x 267mm pin	02	02	02
02	5.28.1036	Cylinder support	02	02	02	38	7.12.045	5/16" x 2.1/2" cotter pin	04	04	04
03	5.12.1911	Support fixing plate.....	04	04	04	39	7.29.389	Locking R.....	01	01	01
04	5.28.1084	Rear support foot fixing bracket.....	01	01	01	40	7.12.459	Lift assembly.....	01	01	01
05	7.25.670	3/4" x 5.1/2" hex screw	16	16	16	41	5.28.1056	Rear fixing shoe for the crusher roller	01	01	01
06	7.10.007	3/4" pressure washer.....	24	24	24						
07	7.25.016	3/4" hex nut	24	24	24						
08	5.11.879	Articulated arm for the crusher roller	02	02	02						
09	5.12.1910	Arm fixing plate.....	02	02	02						
10	7.25.436	3/4" x 5" hex screw	08	08	08						
11	7.12.1072	Hydraulic cylinder	02	02	02						
12	7.11.290	Bushing.....	08	08	08						
13	5.25.1436	Ø 25,4 x 203mm pin	04	04	04						
14	5.10.356	1" flat washer.....	12	12	12						
15	7.12.003	1/4" x 2" cotter pin	12	12	12						
16	5.25.1435	Ø 25,4 x 175mm pin	02	02	02						
17	5.25.1479	Rear support foot of the disk harrow	01	01	01						
18	5.28.1052	Complete taillight support.....	01	01							
18	5.28.1117	Complete taillight support.....			01						
19	7.21.070	Left lantern.....	02	02	02						
20	7.21.071	Right lantern	02	02	02						
21	5.27.329	Crushing roller	02	02							
21	5.27.347	Crushing roller			02						
22	7.25.052	1/2" x 4" hex screw	04	04	04						
23	7.10.005	1/2" pressure washer.....	04	04	04						
24	7.25.014	1/2" hex nut	04	04	04						
25	5.28.1053	Triangular sign support.....	01	01	01						
26	7.25.009	3/8" x 1.1/4" hex screw	02	02	02						
27	7.10.023	3/8" flat washer.....	02	02	02						
28	7.10.004	3/8" pressure washer.....	02	02	02						
29	7.25.013	3/8" hex nut	02	02	02						
30	7.25.297	5/8" x 3" hex screw	04	04	04						
31	7.10.006	5/8" pressure washer.....	04	04	04						
32	7.25.015	5/8" hex nut	04	04	04						
33	5.12.1932	Cylinder	02	02							
33	5.12.2201	Cylinder			02						
34	5.25.1428	Pin	02	02	02						
35	5.10.239	1.1/2" flat washer.....	06	06	06						

HYDRAULIC SYSTEM



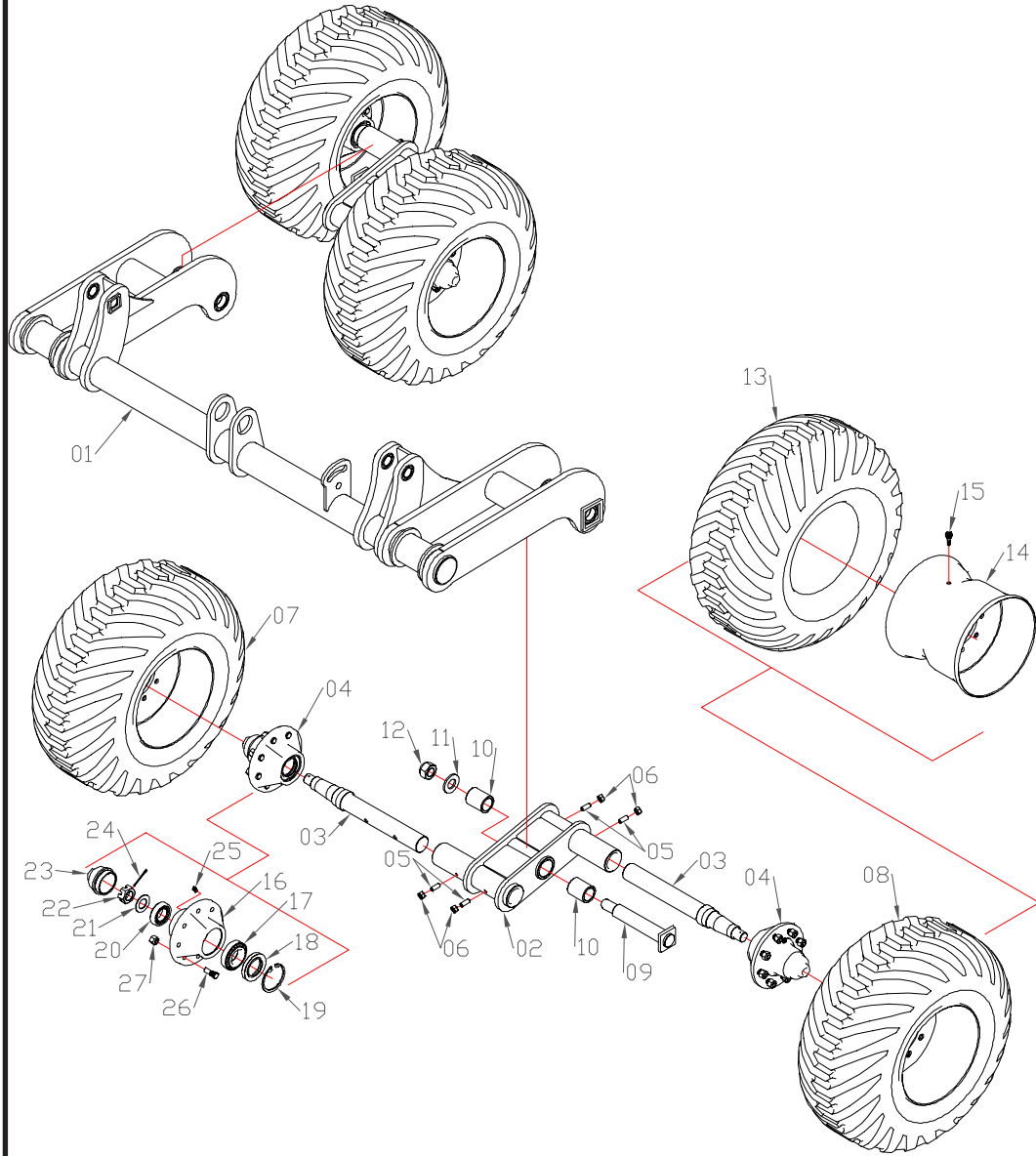
ITEM	CODE	DESCRIPTION	72D	84D	96D	ITEM	CODE	DESCRIPTION	72D	84D	96D
01	7.12.1036	Header hydraulic cylinder.....	01	01	01	38	7.12.1047	Side frame hydraulic cylinder	02	02	
02	5.23.054	3/4" o'ring x 3/4" JIC nipple	27	27	27	38	7.12.1116	Side frame hydraulic cylinder			02
03	7.22.729	Hose 3/8" x 5160mm	01	01	01	39	5.29.1194	Hydraulic tube.....	03	03	03
04	7.22.728	Hose 3/8" x 5610mm	01	01	01	40	5.29.1195	Hydraulic tube.....	01	01	01
05	5.23.045	3/4" JIC x 1/2" NPT nipple.....	08	08	08	41	7.12.1072	Hydraulic cylinder of the crusher	06	06	06
06	7.14.005	1/2" Hydraulic Quick Coupling - Male.....	08	08	08	42	7.22.738	Hose 3/8" x 2080mm	02	02	02
07	5.31.130	Height adjustment valve	01	01	01	43	7.22.441	Hose 3/8" x 2850mm	01	01	01
08	5.28.1057	Limit valve support.....	01	01	01	44	7.22.739	Hose 3/8" x 2720mm	01	01	01
09	5.10.476	Hydraulic hose support plate.....	04	04	04	45	5.23.080	3/4" JIC T-nipple	08	08	08
10	7.25.518	1/2" x 2" french screw with nut	08	08	08	46	7.22.743	Hose 3/8" x 1540mm	02	02	
11	7.10.005	1/2" pressure washer.....	08	08	08	43	7.22.781	Hose 3/8" x 2650mm			02
12	5.29.1161	Scraper screw lock with square hole.....	04	04	04	47	7.22.745	Hose 3/8" x 890mm	01	01	01
13	7.25.230	3/8" x 2.1/4" hex screw	02	02	02	48	7.22.744	Hose 3/8" x 700mm	01	01	01
14	7.10.004	3/8" pressure washer.....	06	06	06	49	7.22.740	Hose 3/8" x 2080mm	01	01	01
15	7.25.013	3/8" hex nut	06	06	06	50	7.22.742	Hose 3/8" x 5070mm	01	01	01
16	7.25.159	5/16" x 3" hex screw	06	06	06	51	7.22.741	Hose 3/8" x 2650mm	01	01	01
17	7.10.003	5/16" pressure washer.....	16	16	16	52	7.11.288	Hydraulic block	01	01	01
18	7.25.012	5/16" hex nut	16	16	16	53	7.22.735	Hose 3/8" x 650mm	01	01	01
19	7.12.1033	Central wheelset hydraulic cylinder.....	02	02	02	54	7.22.736	Hose 3/8" x 610mm	01	01	01
20	7.22.732	Hose 3/8" x 610mm	01	01	01	55	7.22.737	Hose 3/8" x 2870mm	01	01	01
21	7.22.014	Hose 3/8" x 1500mm	01	01	01	56	7.22.393	Hose 3/8" x 2000mm	01	01	01
22	7.22.171	Hose 3/8" x 2500mm	02	02	02	57	7.22.484	Hose 3/8" x 6500mm	03	03	03
23	5.29.1193	Hydraulic tube.....	02	02	02	58	7.20.116	Header Cylinder Repair Kit.....	01	01	01
24	5.29.1192	Hydraulic tube.....	02	02	02	59	7.20.114	Center Wheel Cylinder Repair Kit	02	02	02
25	7.22.734	Hose 3/8" x 1530mm	02	02	02	60	7.20.118	Side frames wheelset cylinder repair kit.....	02	02	02
26	7.22.733	Hose 3/8" x 1800mm	02	02	02	61	7.20.115	Crusher Cylinder Repair Kit.....	06	06	06
27	7.12.1034	Side frame rodeo hydraulic cylinder	02	02	02	62	7.20.117	Side Frame Cylinder Repair Kit.....	02	02	02
28	7.22.012	Hose 3/8" x 3000mm	01	01	01	63	7.25.033	3/8" x 1" hex screw	04	04	04
29	7.22.731	Hose 3/8" x 3080mm	01	01	01	64	7.25.141	5/16" x 2.1/2" hex screw	10	10	10
30	5.12.1918	Central distribution nipple assembly.....	01	01	01	65	5.25.1107	Clamp plate	18	18	18
31	7.22.676	Hose 3/8" x 6500mm	03	03	03	66	7.10.051	Clamp	18	18	18
32	5.29.1191	Hydraulic tube.....	02	02	02	67	7.10.022	5/16" flat washer	10	10	10
33	7.22.736	Hose 3/8" x 610mm	02	02	02	68	5.29.179	Cylinder cap.....	04	04	04
34	5.12.1916	Dual connection.....	01	01	01	69	7.10.497	M08 pressure washer	04	04	04
35	7.22.042	Hose 3/8" x 1000mm	02	02		70	7.25.437	M08 x 25mm hex screw.....	04	04	04
35	7.22.779	Hose 3/8" x 1100mm			02	71	7.10.017	Sealing ring.....	04	04	04
36	7.22.015B	Hose 3/8" x 1100mm	02	02		72	5.29.1233	Ø 20 x 35mm tube.....	04	04	04
36	7.22.254	Hose 3/8" x 1200mm			02	73	7.23.126	3/4 JIC x 3/4 JIC nipple 45°.....	01	01	01
37	5.20.026	Safety valve kit	02	02	02						

COMPLETE WHEEL HUB WITHOUT AXLE (5.12.1620)



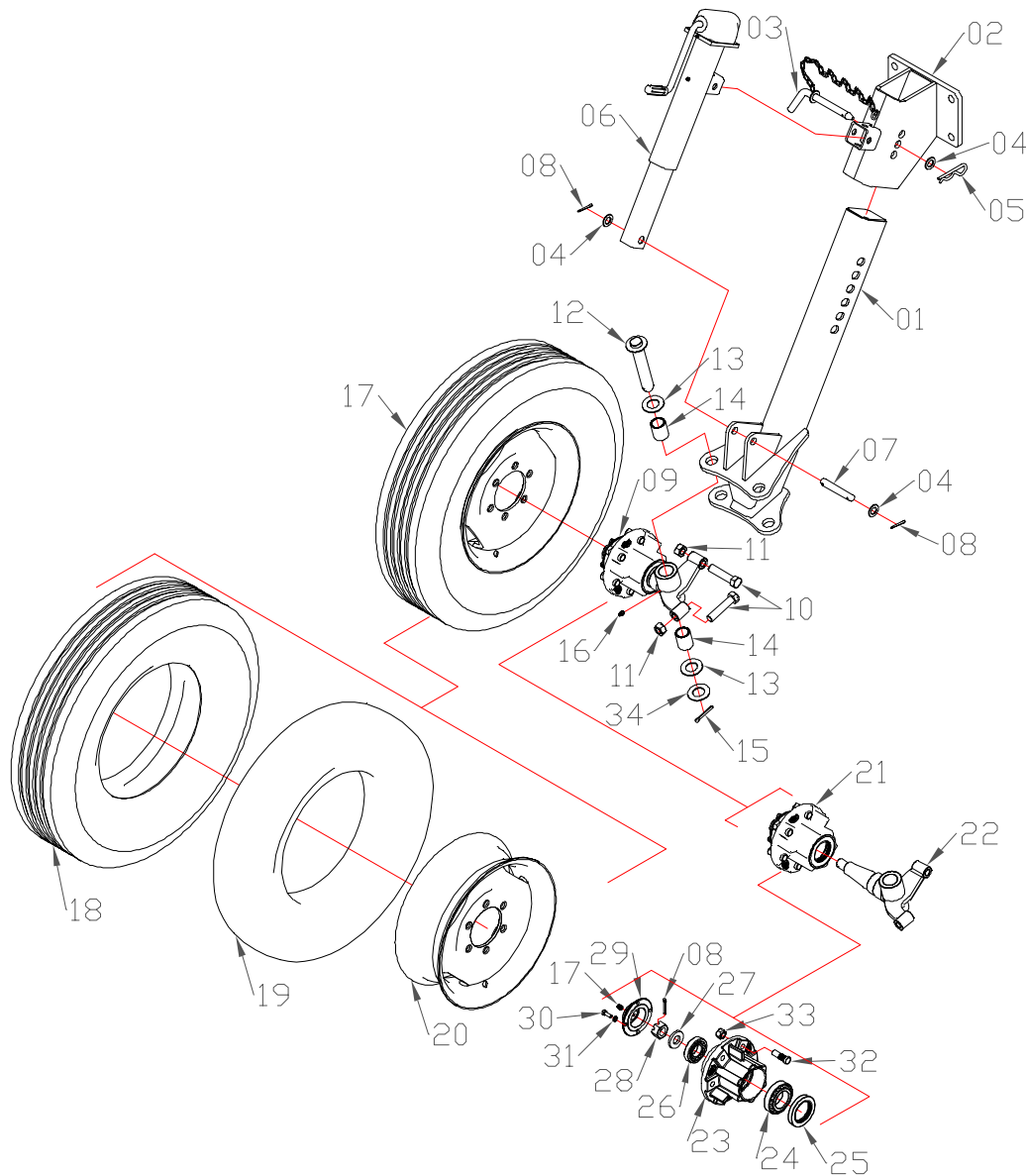
ITEM	CODE	DESCRIPTION	QTY.
01	5.12.730	Wheel hub	01
02	7.27.004	Bearing	01
03	7.27.177	Retainer	01
04	7.27.152	Bearing	01
05	5.10.146	Ø 26 x Ø 50mm washer.....	01
06	7.25.205	1" castle nut.....	01
07	7.12.006	3/16" x 1.1/2" cotter pin	01
08	5.29.517	Hub hub cover	01
09	7.25.080	5/16" x 7/8" hex screw	04
10	7.10.003	5/16" pressure washer.....	04
11	7.25.589	9/16" x 1.7/8" knurled screw	06
12	7.25.536	9/16" hex nut	06
13	7.16.017	1/8" straight grease fitting.....	01

CENTRAL WHEEL



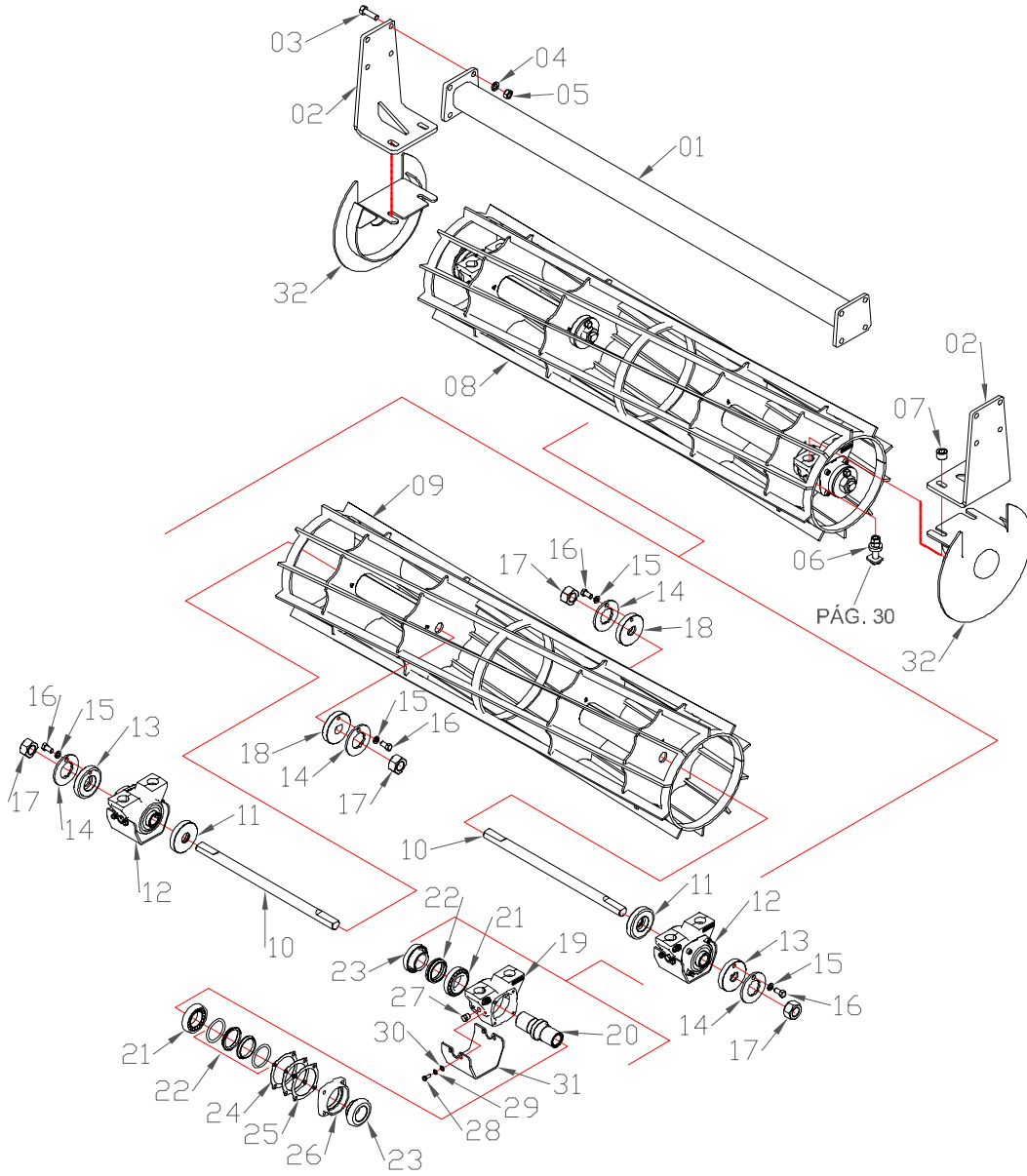
ITEM	CODE	DESCRIPTION	QTY.
01	5.14.866	Central wheelset axle	01
02	5.14.864	Wheel fixing structure	02
03	5.14.865	Wheel hub axle.....	04
04	7.12.502	Complete wheel hub.....	04
05	7.25.138	5/8" x 1.1/2" Allen screw without head.....	08
06	7.25.015	5/8" hex nut	08
07	5.25.861	Left complete tire 400/60 15.5	02
08	5.25.860	Right complete tire 400/60 15.5.....	02
09	5.25.1427	Wheel fixing pin	02
10	5.11.893	Bushing.....	04
11	5.10.468	Ø 39 x Ø 75mm washer.....	02
12	7.25.118	1.1/2" hex nut	02
13	7.25.598	Tire 400/60 15.5	04
14	7.27.234	Wheel	04
15	7.11.011	Tire valve	04
16	7.12.635	Wheel hub	04
17	7.27.003	Bearing	04
18	7.27.254	Retainer.....	04
19	7.10.101	Retaining ring	04
20	7.27.004	Bearing	04
21	5.10.275	Ø 40 x Ø 70mm washer.....	04
22	7.25.748	1.1/2" castle nut.....	04
23	7.29.236	Hub hub cover	04
24	7.12.005	3/16" x 2.1/2" cotter pin	04
25	7.16.019	1/8" NPT 45° grease fitting	04
26	7.25.685	5/8" x 2" knurled screw	32
27	7.25.059	5/8" hex nut	32

FRONT SUPPORT WHEEL ASSEMBLY



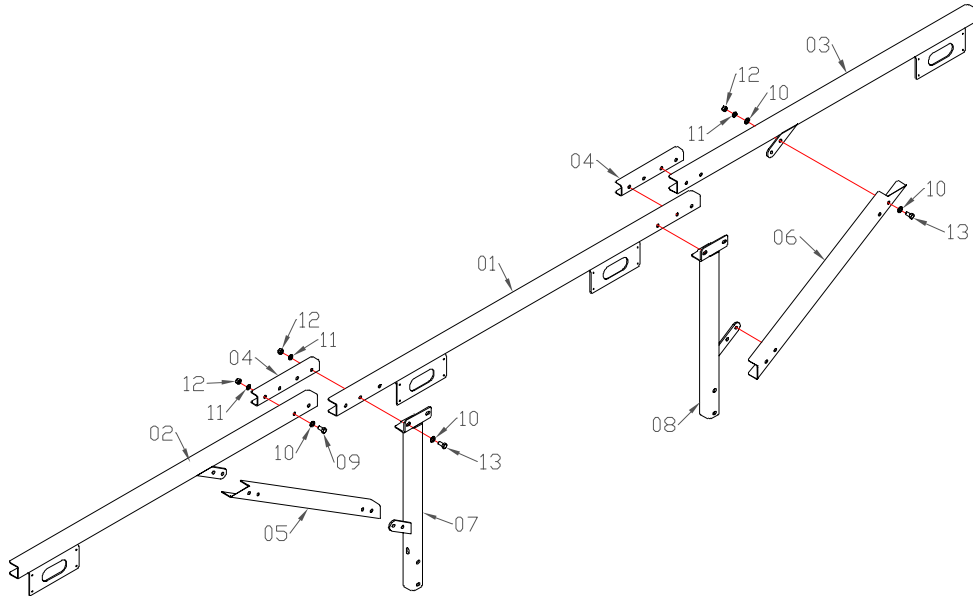
ITEM	CODE	DESCRIPTION	QTY.
01	5.11.881	Support wheel arm	01
02	5.28.1043	Support wheel support.....	01
03	5.25.1445	Pin	01
04	5.10.085	3/4" flat washer	03
05	7.29.009	Lock	01
06	7.12.1045	Support wheel adjustment set	01
07	5.25.1442	Ø 19,05 x 116mm pin	01
08	7.12.006	3/16" x 1.1/2" cotter pin	03
09	5.12.1905	Complete wheel hub	01
10	7.25.988	3/4" x 3.1/2" hex screw	02
11	7.25.016	3/4" hex nut	02
12	5.25.1443	Support wheel pin.....	01
13	5.10.471	Wear washer	02
14	5.11.892	Wheel joint bushing	02
15	7.12.003	1/4" x 2" cotter pin	01
16	7.16.017	1/8" straight grease fitting	01
17	5.25.504	Complete tire 7.5/16	02
18	7.25.058	Tire 7.5/16	01
19	7.12.084	Air chamber	01
20	7.27.151	Wheel	01
21	5.12.1620	Wheel hub without axle	01
22	5.14.869	Rotating wheel axis	01
23	5.12.730	Wheel hub	01
24	7.27.004	Bearing	01
25	7.27.177	Retainer	01
26	7.27.152	Bearing	01
27	5.10.146	Ø 26 x Ø 50mm washer.....	01
28	7.25.205	1" castle nut.....	01
29	5.29.517	Hub hub cover	01
30	7.25.080	5/16" x 7/8" hex screw	04
31	7.10.003	5/16" pressure washer.....	04
32	7.25.589	9/16" x 1.7/8" knurled screw	06
33	7.25.536	9/16" hex nut	06
34	5.10.472	1.1/4" flat washer.....	01

CRUSHING ROLLER

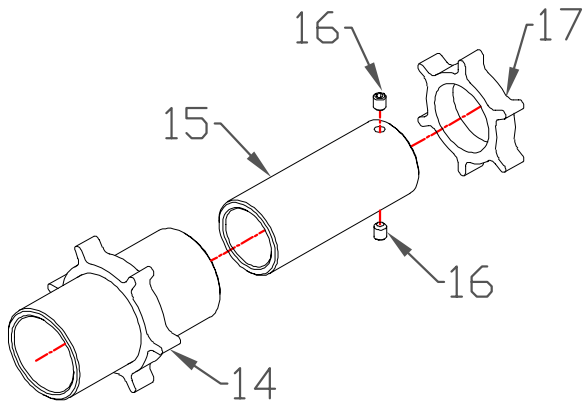


ITEM	CODE	DESCRIPTION	72D	84D	96D
01	5.28.1090	Upper support of the crusher roller.....	04		
01	5.28.1034	Upper support of the crusher roller.....	02	06	04
01	5.28.1098	Crushing roller bearing support			02
02	5.28.1035	Crushing roller bearing support	12	12	12
03	7.25.007	5/8" x 2" hex screw	24	24	24
04	7.10.006	5/8" pressure washer.....	24	24	24
05	7.25.015	5/8" hex nut	24	24	24
06	5.12.1887	5/8" x 3" hex screw set	24	24	24
07	5.11.884	Bearing spacer bushing.....	24	24	24
08	5.27.340	Roll crusher - set	04		
08	5.27.328	Roll crusher - set	02	06	04
08	5.27.346	Roll crusher - set			02
09	5.27.339	Pre-assembled crushing roller.....	04		
09	5.27.327	Pre-assembled crushing roller.....	02	06	04
09	5.27.345	Pre-assembled crushing roller.....			02
10	5.14.867	1.1/4" x 580mm axle.....	12	12	12
11	5.10.475	Bearing thrust washer.....	12	12	12
12	5.22.255	Bearing	12	12	12
13	5.10.474	Bearing thrust washer.....	12	12	12
14	5.29.1180	Nut lock.....	24	24	24
15	7.10.005	1/2" pressure washer.....	24	24	24
16	7.25.064	1/2" x 1" hex screw	24	24	24
17	7.25.448	1.1/4" hex nut	24	24	24
18	5.10.473	Axle thrust washer	12	12	12
19	5.12.1885	Bearing hub	12	12	12
20	5.14.429	Bearing shaft	12	12	12
21	7.27.195	Bearing	24	24	24
22	7.27.194	Retainer	24	24	24
23	5.11.333	Retainer holder bushing	24	24	24
24	7.19.015	Vellumoid gasket 0.3mm	24	24	24
25	7.19.016	Vellumoid gasket 0.2mm	12	12	12
26	5.29.553	Bearing cover	12	12	12
27	5.11.322	3/8" plug	12	12	12
28	7.25.068	5/16" x 3/4" hex screw	48	48	48
29	7.10.003	5/16" pressure washer.....	48	48	48
30	7.10.022	5/16" flat washer.....	48	48	48
31	5.12.1917	Bearing protection cover.....	12	12	12
32	5.25.1489	Roller side protection.....	12	12	12

COMPLETE FLASHLIGHT SUPPORT

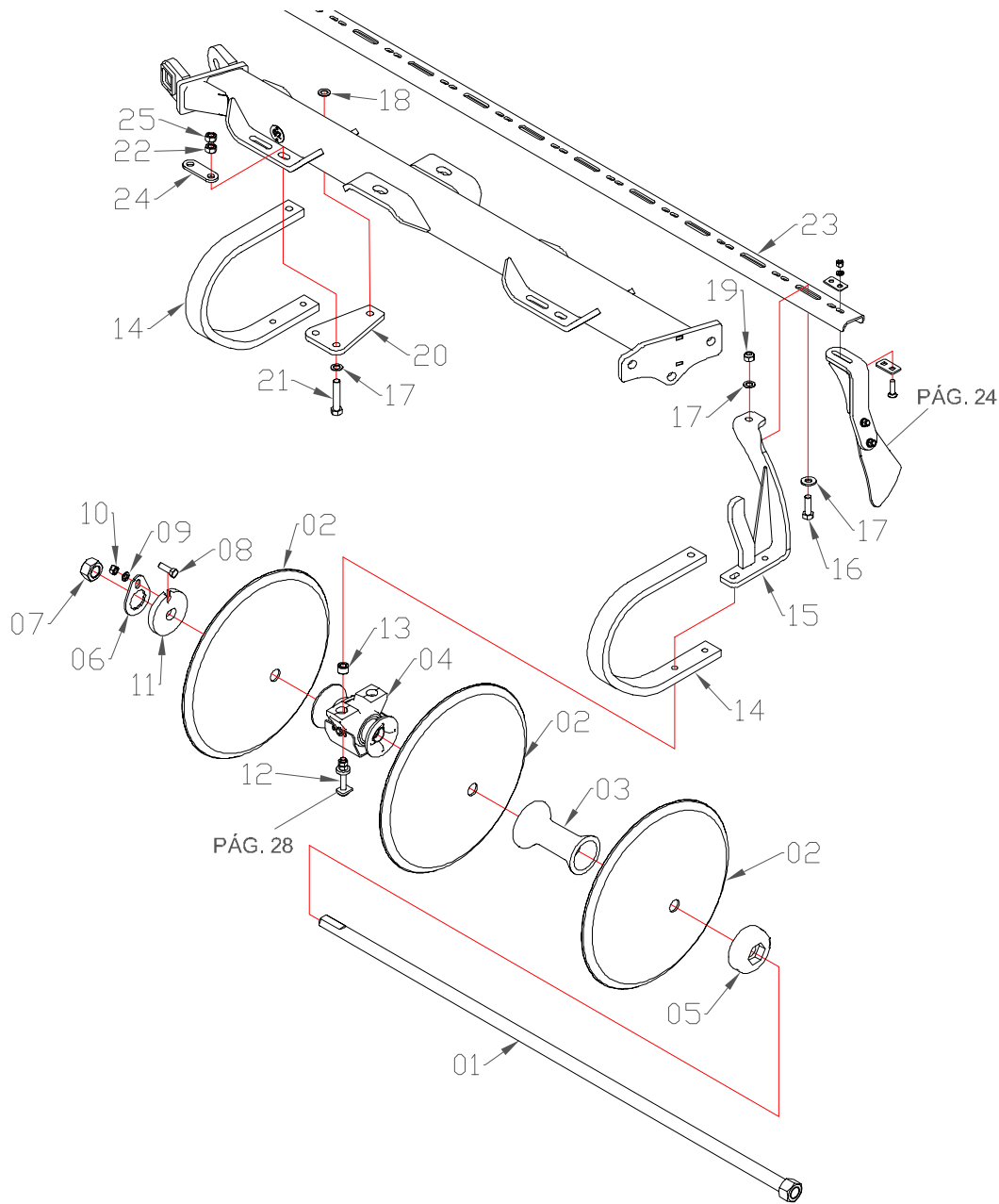


ROD LIMITER (5.21.137)



ITEM	CODE	DESCRIPTION	72D	84D	96D
01	5.28.1049	Central lantern support.....	01	01	01
02	5.28.1051	Left flashlight bracket.....	01	01	
02	5.28.1115	Left flashlight bracket.....			01
03	5.28.1050	Right flashlight bracket.....	01	01	
03	5.28.1116	Right flashlight bracket.....			01
04	5.25.1439	Connection profile.....	02	02	02
05	5.29.1189	Left support latch.....	01	01	01
06	5.29.1188	Right support lock.....	01	01	01
07	5.12.1907	Left support column.....	01	01	01
08	5.12.1906	Right support column.....	01	01	01
09	7.25.064	1/2" x 1" hex screw.....	06	06	06
10	7.10.024	1/2" flat washer.....	26	26	26
11	7.10.005	1/2" pressure washer.....	18	18	18
12	7.25.014	1/2" hex nut.....	18	18	18
13	7.25.034	1/2" x 1.1/4" hex screw.....	12	12	12
14	5.12.1926	Rod regulator body.....	01	01	01
15	5.11.907	Threaded bushing.....	01	01	01
16	7.25.233	1/2" x 5/8" allen screw without head.....	02	02	02
17	5.25.1452	Nut.....	01	01	01

FRONT CENTER DISK ASSEMBLY

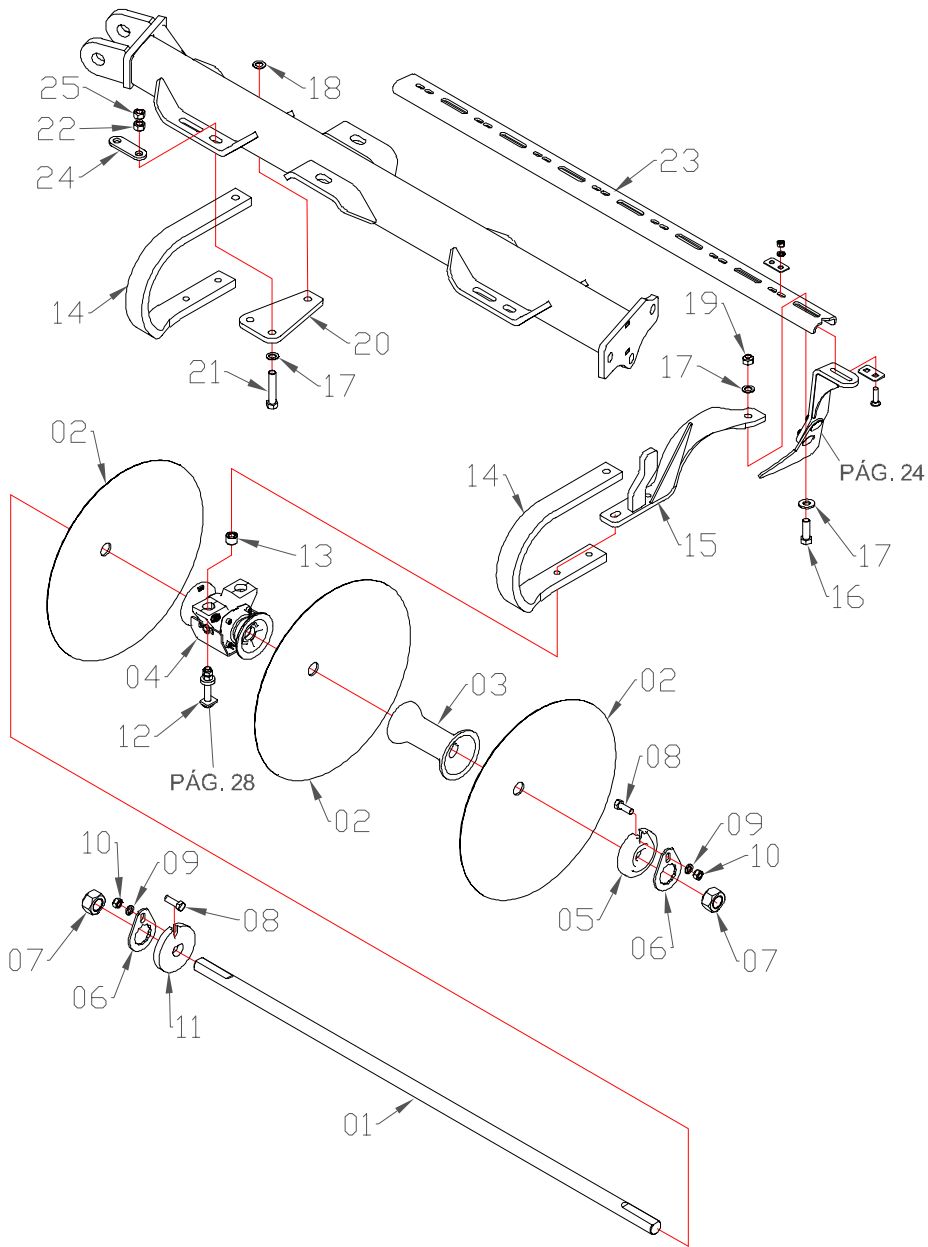


ITEM	CODE	DESCRIPTION	72D	84D	96D
01	5.14.907	Axle Ø1.1/2" x 1962mm (Front Center).....	02	02	
01	5.14.921	Axle Ø1.1/2" x 2192mm (Front Center).....			02
02	TAB 4	Disk.....	18	18	20
03	7.28.115	Separator.....	12	12	14
04	5.22.254	Bearing.....	04	04	04
05	7.29.400	Front center external disk thrust washer	02	02	02
06	5.29.1020	Nut lock.....	02	02	02
07	7.25.020	1.1/2" hex nut	02	02	02
08	7.25.296	5/8" x 1.3/4" hex screw	02	02	02
09	7.10.006	5/8" pressure washer.....	02	02	02
10	7.25.015	5/8" hex nut	02	02	02
11	7.29.343	Convex thrust washer.....	02	02	02
12	5.12.1888	5/8" x 4.1/2" screw set.....	08	08	08
13	5.11.884	Bushing.....	08	08	08
14	5.22.249	Left spring.....	02	02	02
14	5.22.250	Right spring	02	02	02
15	5.28.1040	Left wiper support.....	02	02	02
15	5.28.1039	Right wiper support.....	02	02	02
16	7.25.602	3/4" x 2.1/4" hex screw	04	04	04
17	5.10.085	Ø 20 x Ø 48mm washer.....	20	20	20
18	5.10.481	Ø 21 x Ø 43mm washer.....	04	04	04
19	7.25.176	3/4" self-locking nut	04	04	04
20	5.11.863	Spring fixing base	04	04	04
21	7.25.244	3/4" x 4" hex screw	12	12	12
22	7.25.016	3/4" hex nut	12	12	12
23	5.11.886	Fixing base for central front scrapers	02	02	
23	5.11.931	Fixing base for central front scrapers			02
24	5.14.889	Spring lock link	04	04	04
25	7.25.441	3/4" hex nut (low).....	12	12	12

TAB 4 - DISK TABLE

Thickness \ Diameter	6mm	7mm	7,5mm	
	22"	11.01.016	-	-
24"	11.01.017	-	-	

REAR CENTER DISK ASSEMBLY

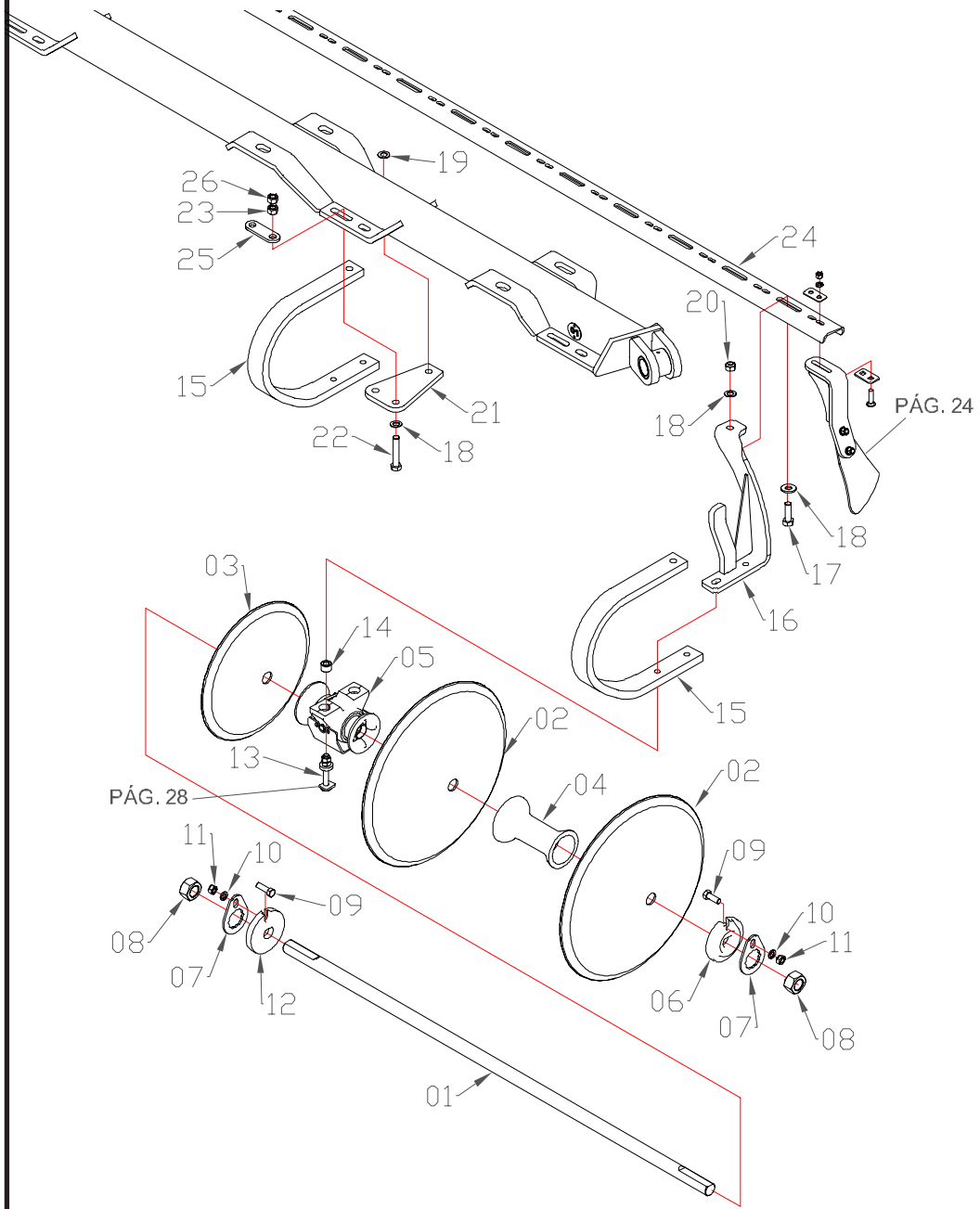


ITEM	CODE	DESCRIPTION	72D	84D	96D
01	5.14.874	Axle Ø1.1/2" x 1750mm (Rear center)	02	02	
01	5.14.920	Axle Ø1.1/2" x 1980mm (Rear center)			02
02	TAB 4	Disk.....	16	16	18
03	7.28.115	Separator.....	10	10	12
04	5.22.254	Bearing	04	04	04
05	7.29.343	Convex thrust washer.....	02	02	02
06	5.29.1020	Nut lock.....	04	04	04
07	7.25.020	1.1/2" hex nut	04	04	04
08	7.25.296	5/8" x 1.3/4" hex screw	04	04	04
09	7.10.006	5/8" pressure washer.....	04	04	04
10	7.25.015	5/8" hex nut	04	04	04
11	7.29.342	Concave thrust washer.....	02	02	02
12	5.12.1888	5/8" x 4.1/2" screw set.....	08	08	08
13	5.11.884	Bushing.....	08	08	08
14	5.22.249	Left spring.....	02	02	02
14	5.22.250	Right spring	02	02	02
15	5.28.1040	Left wiper support.....	02	02	02
15	5.28.1039	Right wiper support.....	02	02	02
16	7.25.602	3/4" x 2.1/4" hex screw	04	04	04
17	5.10.085	Ø 20 x Ø 48mm washer.....	20	20	20
18	5.10.481	Ø 21 x Ø 43mm washer.....	04	04	04
19	7.25.176	3/4" self-locking nut	04	04	04
20	5.11.863	Spring fixing base.....	04	04	04
21	7.25.244	3/4" x 4" hex screw	12	12	12
22	7.25.016	3/4" hex nut	12	12	12
23	5.11.888	Central rear scraper fixing base	02	02	
23	5.11.930	Central rear scraper fixing base			02
24	5.14.889	Spring lock link	04	04	04
25	7.25.441	3/4" hex nut (low).....	12	12	12

TAB 4 - DISK TABLE

Diameter \ Thickness	6mm	7mm	7,5mm	
	22"	11.01.016	-	-
24"	11.01.017	-	-	

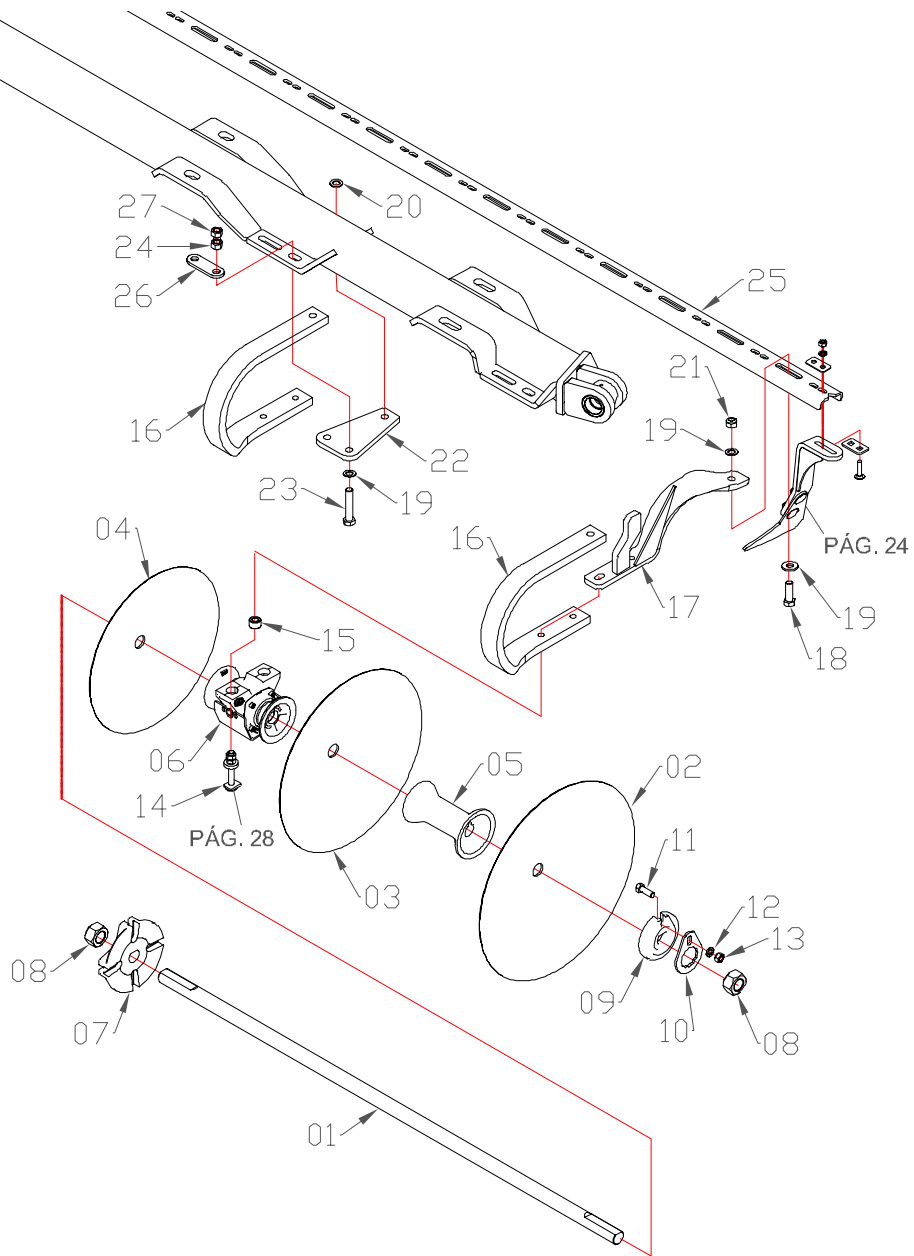
FRONT SIDE DISK ASSEMBLY



ITEM	CODE	DESCRIPTION	72D	84D	96D
01	5.14.911	Axle Ø1.1/2" x 1970mm (Front side)	02		
01	5.14.871	Axle Ø1.1/2" x 2670mm (Front side)		02	
01	5.14.931	Axle Ø1.1/2" x 1520mm (Front side)			04
02	TAB 4	Disk.....	16	22	26
03	11.01.024	Smooth concave disk Ø 18" x 06mm	02	02	02
04	7.28.115	Separator.....	10	16	16
05	5.22.254	Bearing	06	06	08
06	7.29.342	Concave thrust washer.....	02	02	04
07	5.29.1020	Nut lock.....	04	04	08
08	7.25.020	1.1/2" hex nut	04	04	08
09	7.25.296	5/8" x 1.3/4" hex screw	04	04	08
10	7.10.006	5/8" pressure washer.....	04	04	08
11	7.25.015	5/8" hex nut	04	04	08
12	7.29.343	Convex thrust washer.....	02	02	04
13	5.12.1888	5/8" x 4.1/2" screw set.....	12	12	16
14	5.11.884	Bushing.....	12	12	16
15	5.22.249	Left spring.....	03	03	04
15	5.22.250	Right spring	03	03	04
16	5.28.1040	Left wiper support.....	03	03	04
16	5.28.1039	Right wiper support.....	03	03	04
17	7.25.602	3/4" x 2.1/4" hex screw	06	06	08
18	5.10.085	Ø 20 x Ø 48mm washer.....	30	30	40
19	5.10.481	Ø 21 x Ø 43mm washer.....	06	06	08
20	7.25.176	3/4" self-locking nut	06	06	08
21	5.11.863	Spring fixing base	06	06	08
22	7.25.244	3/4" x 4" hex screw	18	18	24
23	7.25.016	3/4" hex nut	18	18	24
24	5.11.927	Fixing base for front side scrapers	02		
24	5.11.885	Fixing base for front side scrapers		02	
24	5.11.943	Fixing base for front side scrapers			04
25	5.14.889	Spring lock link	06	06	08
26	7.25.441	3/4" hex nut (low).....	18	18	24

TAB 4 - DISK TABLE				
Thickness	6mm	7mm	7,5mm	
Diameter				
22"	11.01.016	-	-	
24"	11.01.017	-	-	

REAR SIDE DISK ASSEMBLY

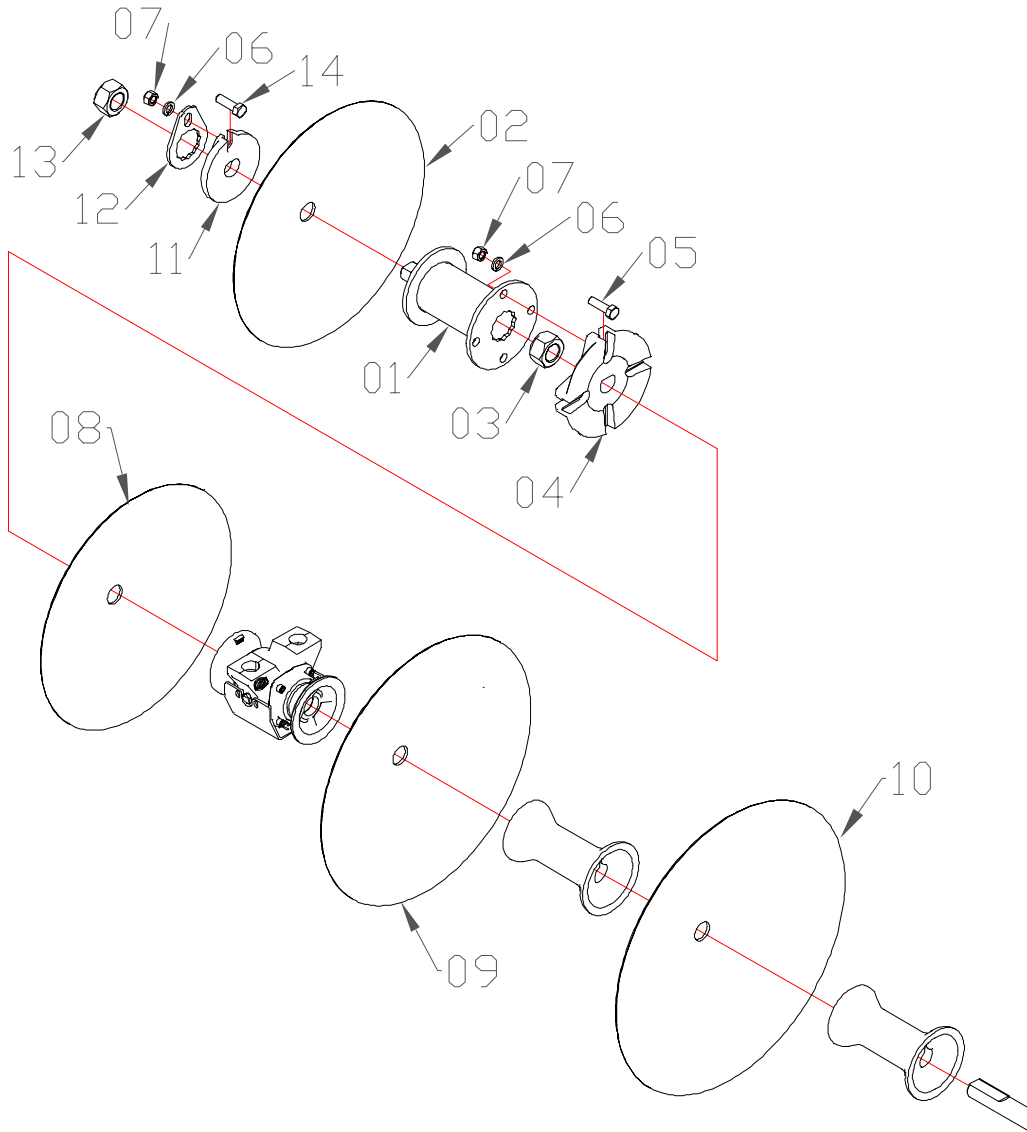


ITEM	CODE	DESCRIPTION	72D	84D	96D
01	5.14.912	Axle Ø1.1/2" x 2911mm (Rear side).....	02		
01	5.14.873	Axle Ø1.1/2" x 2911mm (Rear side).....		02	
01	5.14.931	Axle Ø1.1/2" x 1520mm (Rear side).....			02
01	5.14.874	Axle Ø1.1/2" x 1750mm (Rear side).....			02
02	TAB 4	Disk.....	16	22	26
03	TAB 4	Disk.....	02	02	02
04	11.01.015	Smooth concave disk Ø 20" x 06mm	02	02	02
05	7.28.115	Separator.....	12	18	18
06	5.22.254	Bearing	06	06	08
07	7.29.399	Concave thrust washer.....	02	02	04
08	7.25.020	1.1/2" hex nut	04	04	08
09	7.29.343	Convex thrust washer.....	02	02	08
10	5.29.1020	Nut lock.....	02	02	08
11	7.25.296	5/8" x 1.3/4" hex screw	02	02	08
12	7.10.006	5/8" pressure washer.....	02	02	08
13	7.25.015	5/8" hex nut	02	02	04
14	5.12.1888	5/8" x 4.1/2" screw set.....	12	12	16
15	5.11.884	Bushing.....	12	12	16
16	5.22.249	Left spring.....	03	03	04
16	5.22.250	Right spring	03	03	04
17	5.28.1040	Left wiper support.....	03	03	04
17	5.28.1039	Right wiper support.....	03	03	04
18	7.25.602	3/4" x 2.1/4" hex screw	06	06	08
19	5.10.085	Ø 20 x Ø 48mm washer.....	30	30	40
20	5.10.481	Ø 21 x Ø 43mm washer.....	06	06	08
21	7.25.176	3/4" self-locking nut	06	06	08
22	5.11.863	Spring fixing base	06	06	08
23	7.25.244	3/4" x 4" hex screw	18	18	24
24	7.25.016	3/4" hex nut	18	18	24
25	5.11.928	Rear side scraper fixing base.....	02		
25	5.11.887	Rear side scraper fixing base.....		02	
25	5.11.941	Rear side scraper fixing base.....			04
26	5.14.889	Spring lock link	06	06	08
27	7.25.441	3/4" hex nut (low).....	18	18	24

TAB 4 - DISK TABLE

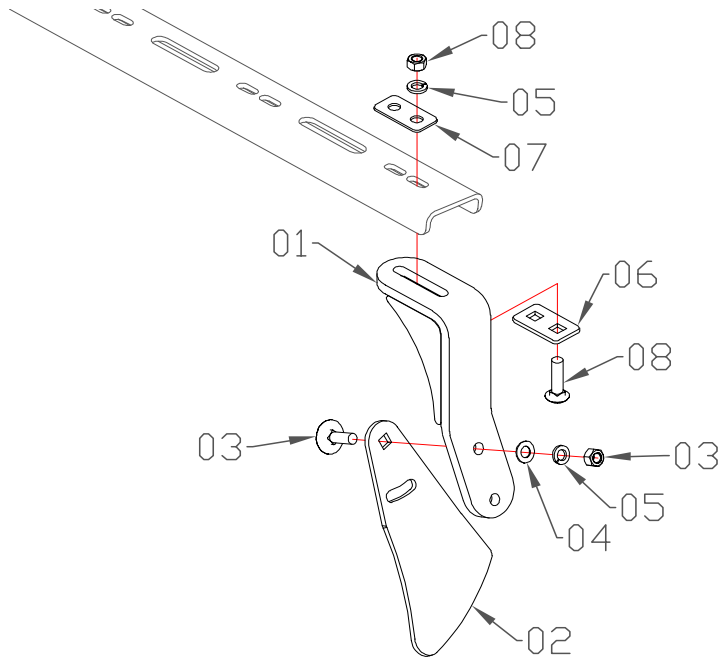
Diameter \ Thickness	Thickness		
	6mm	7mm	7,5mm
22"	11.01.016	-	-
24"	11.01.017	-	-

DISK SLUDGE SIDE REAR CHASSIS GROOVE

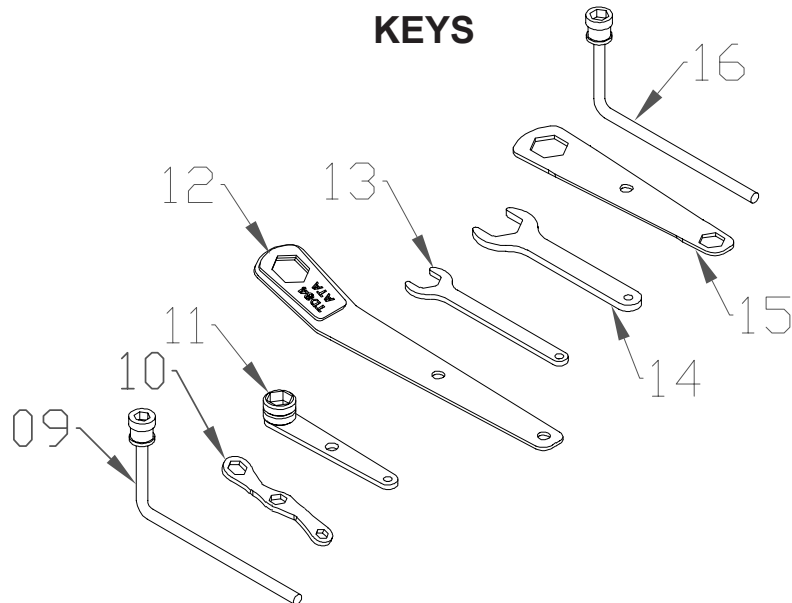


ITEM	CODE	DESCRIPTION	QTY.
01	5.28.1054	Disk holder smudge groove.....	02
02	11.01.024	Smooth concave disc Ø 20" x 06mm	02
03	7.25.020	1.1/2" hex nut	02
04	7.29.399	Concave thrust washer.....	02
05	7.25.007	5/8" x 2" hex screw	08
06	7.10.006	5/8" pressure washer.....	10
07	7.25.015	5/8" hex nut	10
08	11.01.015	Smooth concave disk Ø 20" x 06mm	02
09	11.01.016	Smooth concave disk Ø 22" x 06mm	02
10	11.01.017	Smooth concave disk Ø 24" x 06mm	02
11	7.29.342	Concave thrust washer.....	02
12	5.29.1020	Nut lock.....	02
13	7.25.020	1.1/2" hex nut	02
14	7.25.296	5/8" x 1.3/4" hex screw	02

SCRAPERS

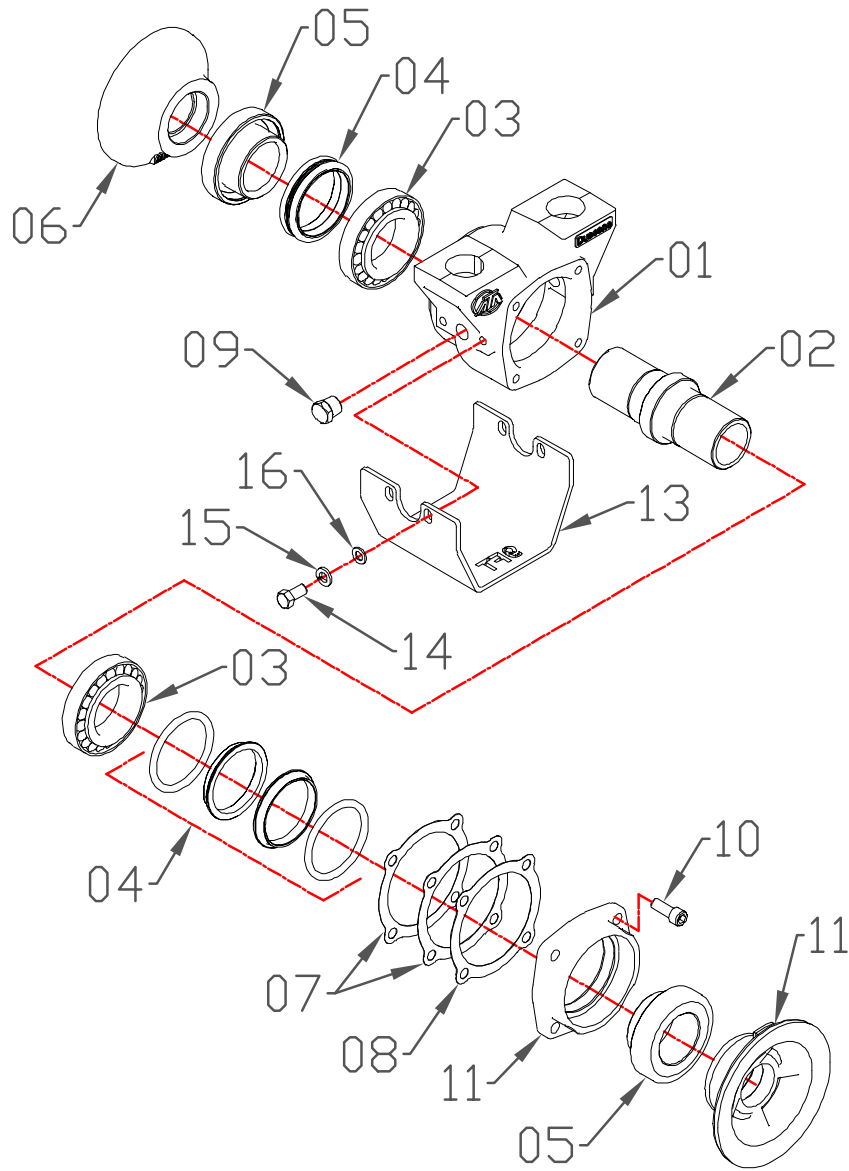


KEYS



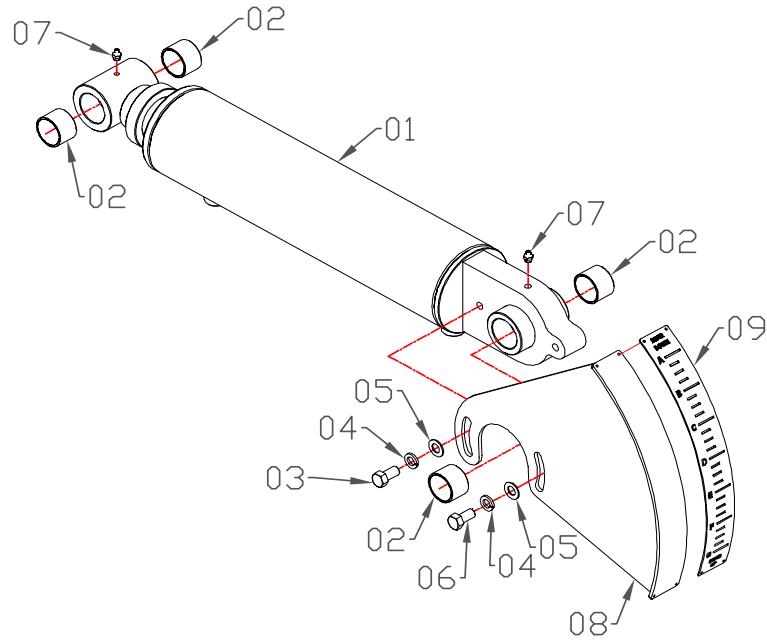
ITEM	CODE	DESCRIPTION	72D	84D	96D
01	5.28.1038	Left scraper support.....	36	42	48
01	5.28.1037	Right scraper holder	36	42	48
02	5.27.333	Left wiper blade	36	42	48
02	5.27.332	Right wiper scraper.....	36	42	48
03	7.25.970	1/2" x 1.1/2" french screw with nut	144	168	192
04	7.10.024	1/2" flat washer	144	168	192
05	7.10.005	1/2" pressure washer.....	288	336	384
06	5.29.1161	Scraper screw lock with square hole.....	72	84	96
07	5.29.1162	Scraper screw lock with round hole.....	72	84	96
08	7.25.518	1/2" x 2" french screw with nut	144	168	192
09	5.12.1923	15/16" key for bearing	01	01	01
10	5.12.744	3/4" x 1.1/16" x 1.1/8" key for wipers	01	01	01
11	5.12.746	1.1/2" key for chassis	01	01	01
12	5.12.1919	2.1/4" bigger for disks.....	01	01	01
13	5.12.1924	1.1/4" key for nut for side frame cylinder	01	01	01
14	5.12.1921	1.5/8" key for nut for crusher roller	01	01	01
15	5.12.1920	2.1/4" smaller for disks	01	01	01
16	5.12.1858	1.1/8" key for wipers	01	01	01

BEARING (5.22.254)

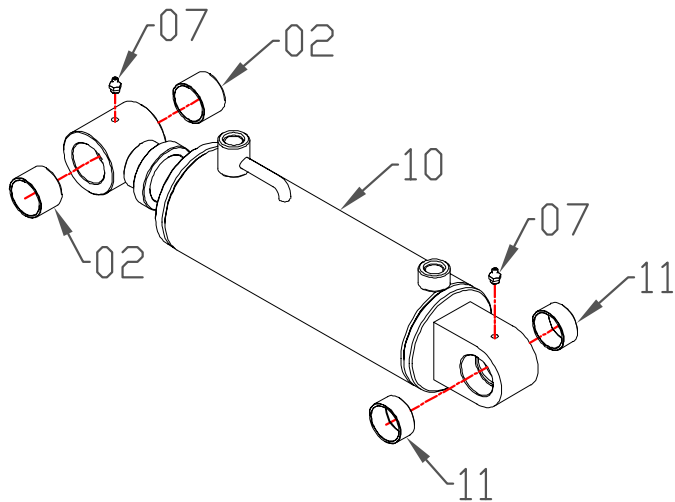


ITEM	CODE	DESCRIPTION	QTY.
01	5.12.1885	Bearing hub	01
02	5.14.799	Bearing shaft	01
03	7.27.195	Bearing	02
04	7.27.194	Retainer	02
05	5.11.333	Retainer holder bushing	02
06	5.14.876	Internal disk fitting	01
07	7.19.015	Vellumoid gasket 0.3mm	02
08	7.19.016	Vellumoid gasket 0.2mm	01
09	5.11.322	3/8" plug	02
10	7.25.614	3/8" x 1" allen head screw	04
11	5.29.553	Hub hub cover	01
12	5.14.875	External disk fitting	01
13	5.12.1917	Bearing protection cover	01
14	7.25.068	5/16" x 3/4" hex screw	04
15	7.10.003	5/16" pressure washer	04
16	7.10.022	5/16" flat washer	04

CYLINDER WITH LEVELING SCALE (5.12.1874)

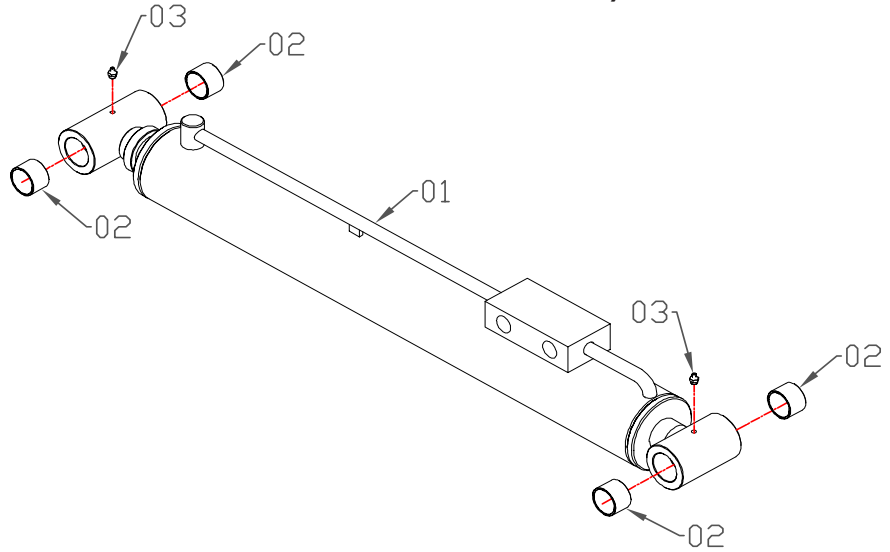


CENTRAL WHEEL CYLINDER (5.12.1869)

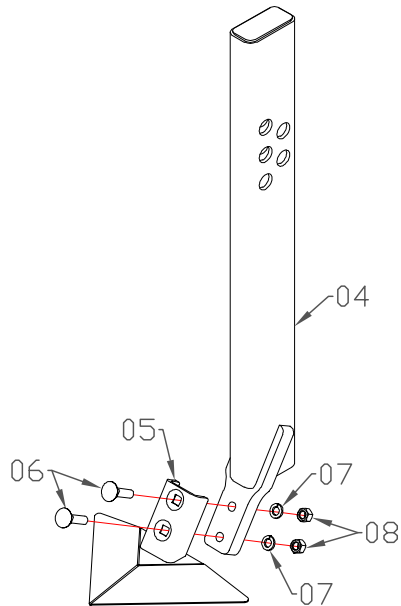


ITEM	CODE	DESCRIPTION	QTY.
01	7.12.1047	Cylinder	01
02	7.11.008	Bushing.....	06
03	7.25.064	1/2" x 1" hex screw	01
04	7.10.005	1/2" pressure washer.....	02
05	7.10.024	1/2" flat washer.....	02
06	7.25.034	1/2" x 1.1/4" hex screw	01
07	7.16.017	1/8" straight grease fitting.....	04
08	5.28.1055	Leveling scale support.....	01
09	7.14.304	Leveling scale.....	01
10	7.12.1033	Cylinder	01
11	7.11.285	Bushing.....	02

SIDE CHASSIS CYLINDER (5.12.1932 - 72D - 84D / 5.12.2201 - 98D)

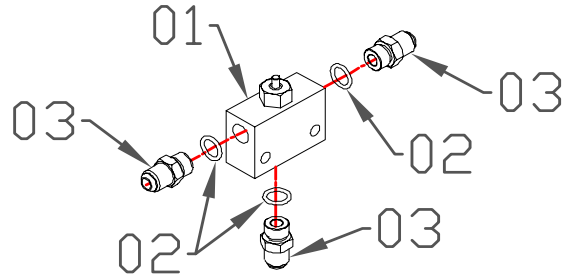


COMPLETE CENTRAL HOE (5.18.003)

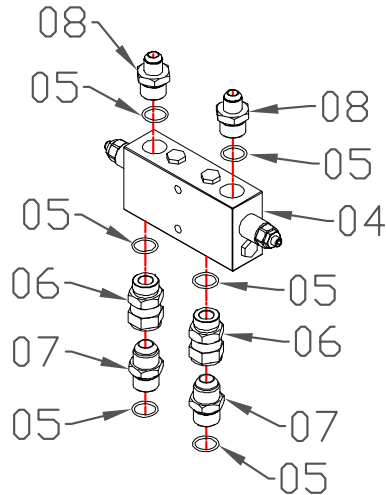


ITEM	CODE	DESCRIPTION	72D	84D	96D
01	7.12.1047	Cylinder	01	01	
01	7.12.1116	Cylinder			01
02	7.11.008	Bushing.....	04	04	04
03	7.16.017	1/8" straight grease fitting.....	02	02	02
04	5.28.1041	Hoe fixing bracket.....	01	01	01
05	5.18.002	Hoe.....	01	01	01
06	7.25.642	1/2" x 2" hex screw.....	02	02	02
07	7.10.005	1/2" pressure washer.....	02	02	02
08	7.25.014	1/2" hex nut	02	02	02

LIMITER VALVE (5.31.130)

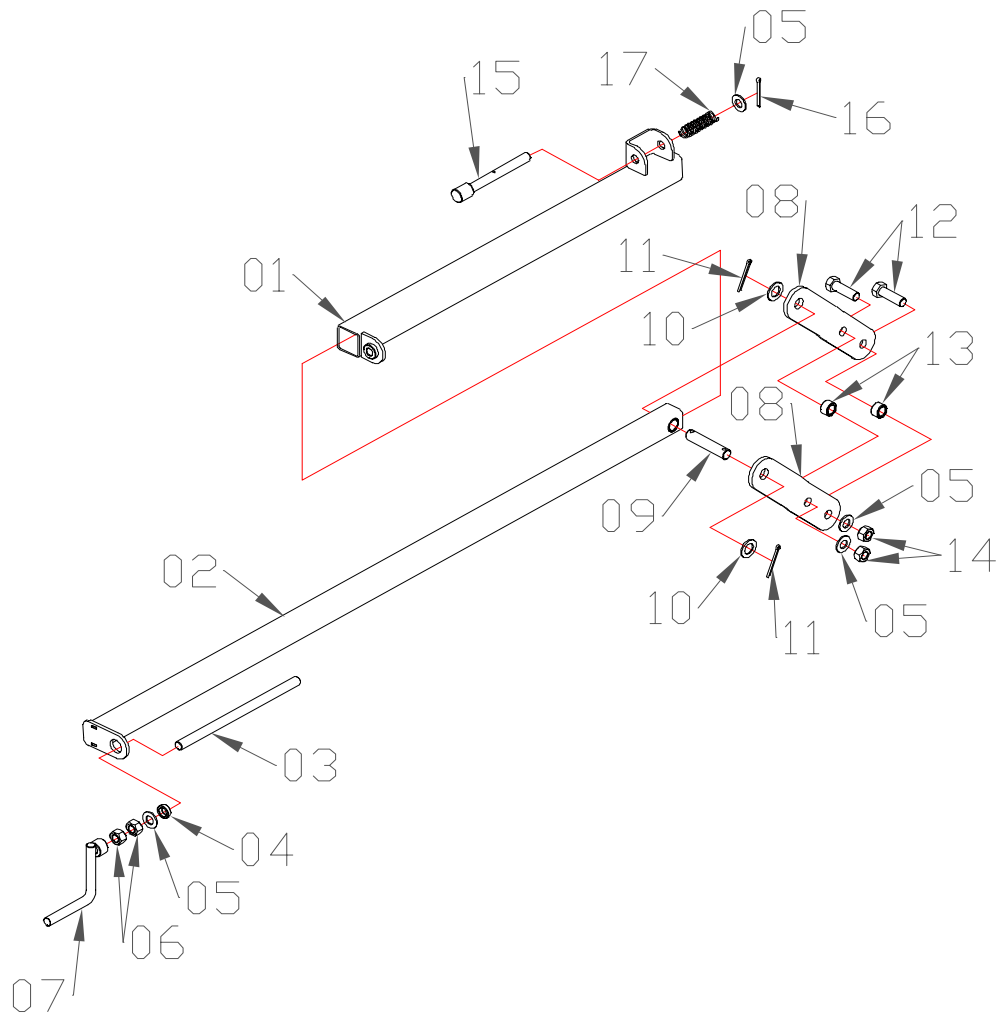


SAFETY VALVE KIT (5.20.026)



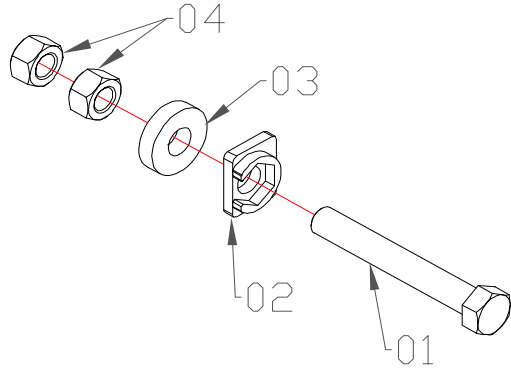
ITEM	CODE	DESCRIPTION	QTY.
01	7.31.162	Limit valve.....	01
02	7.10.372	Sealing ring.....	03
03	5.23.054	3/4" o'ring x 3/4" JIC nipple	03
04	7.31.133	Counterbalance valve.....	01
05	7.10.017	Sealing ring.....	06
06	7.23.097	Safety valve adapter nipple	02
07	5.23.044	1.1/16" JIC x 1.1/16" o'ring nipple	02
08	5.23.065	3/4" JIC x 1.1/16" o'ring nipple	02

ADJUSTMENT ARM ASSEMBLED

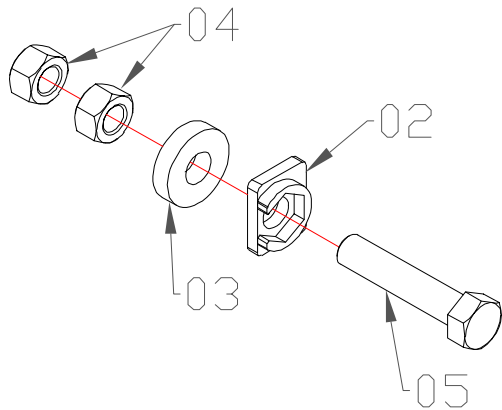


ITEM	CODE	DESCRIPTION	QTY.
01	5.11.901	Smaller regulator arm.....	01
02	5.11.900	Leveling system adjustment arm.....	01
03	5.11.903	5/8" x 250mm bar	01
04	5.11.906	Bushing.....	01
05	7.10.025	5/8" flat washer.....	04
06	7.25.015	5/8" hex nut	02
07	5.22.256	Crank.....	01
08	5.12.1915	Adjustment system articulation plate.....	02
09	5.25.1447	Height adjuster pin.....	01
10	5.10.085	3/4" flat washer.....	02
11	7.12.063	1/4" x 1.1/2" cotter pin	02
12	7.25.144	5/8" x 2.1/2" hex screw	02
13	5.11.899	Bushing.....	02
14	7.25.085	5/8" self-locking nut	02
15	5.14.888	Regulator shaft	01
16	7.12.006	3/16" x 1.1/2" cotter pin	01
17	7.22.727	Spring	01

DISK BEARING HEX SCREW (5.12.1888)

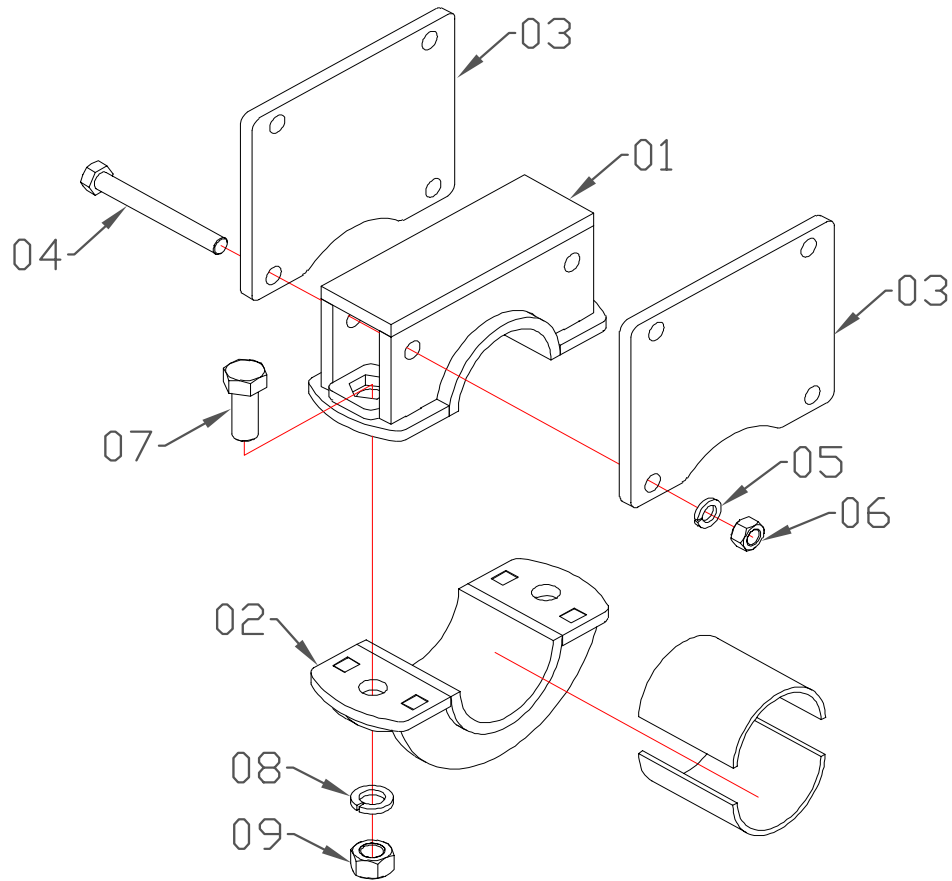


DISK CRUSHER HEX SCREW (5.12.1887)



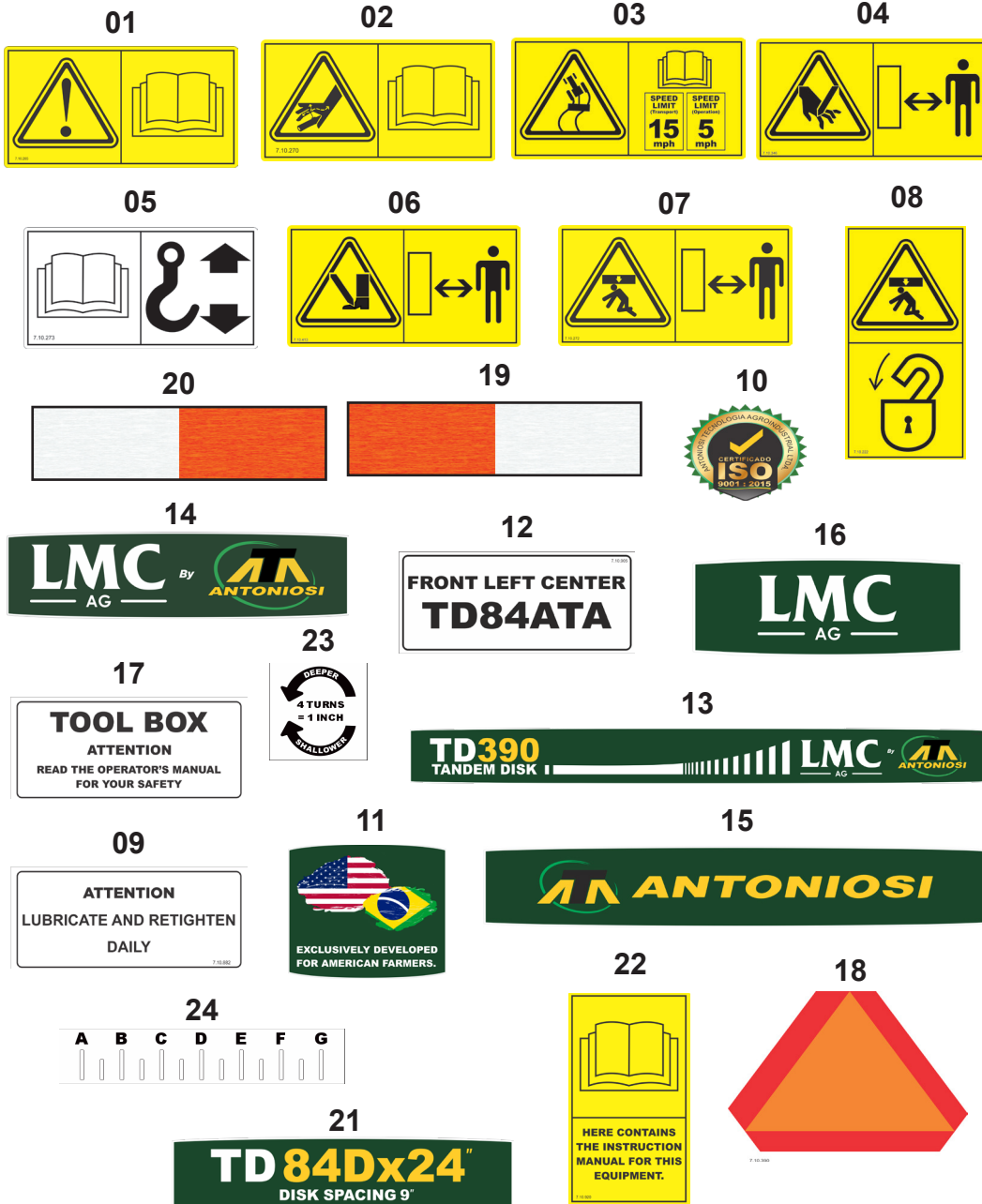
ITEM	CODE	DESCRIPTION	QTY.
01	7.25.377	5/8" x 4.1/2" hex screw	01
02	5.29.1187	Screw lock	02
03	5.10.469	Ø 16,45 x Ø 40mm washer.....	02
04	7.25.015	5/8" hex nut	04
05	7.25.219	5/8" x 3.1/2" hex screw	01

COMPLETE BEARING FOR FIXING THE CENTRAL WHEELSET (5.22.265)



ITEM	CODE	DESCRIPTION	QTY.
01	5.22.264	Central wheelset guide bearing	01
02	5.22.253	Central wheelset fixing bearing	01
03	5.12.2021	Bearing fixing plate on the frame	02
04	7.25.984	3/4" x 6.1/2" hex screw	04
05	7.10.007	3/4" pressure washer	04
06	7.25.016	3/4" hex nut	04
07	7.25.1004	1" x 2.1/2" hex screw	02
08	7.10.009	1" pressure washer	02
09	7.25.070	1" hex nut	02
10	5.25.1446	Wheelset polyurethane plate	02

STICKERS



ITEM	CODE	DESCRIPTION	72D	84D	96D
01	7.10.265	Sticker - Read instruction manual.....	01	01	01
02	7.10.270	Sticker - Attention hydraulic hose	02	02	02
03	7.10.885	Sticker - Speed limit.....	02	02	02
04	7.10.346	Sticker - Attention cutting disk	02	02	02
05	7.10.273	Sticker - Cargo hitch information	08	08	08
06	7.10.413	Sticker - Attention cutting disc - Foot.....	02	02	02
07	7.10.272	Sticker - Attention keep your distance	04	04	04
08	7.10.222	Sticker - Attention: lower the support foot.....	04	04	04
09	7.10.882	Sticker - Lubricate / Retighten	02	02	02
10	7.10.671	Sticker - ISO 9001 Logo	02	02	02
11	7.10.890	Sticker - Brazil Flag - United States.....	04	04	04
12	TAB 5	Sticker - Chassis identification.....	08	08	08
13	7.10.912	Sticker - TD390 / Logo LMC BY ATA(Long).....	02	02	02
14	7.10.879	Sticker - Logo LMC by ATA.....	02	02	02
15	7.10.891	Sticker - Antoniosi Logo.....	02	02	02
16	7.10.886	Sticker - LMC.....	04	04	04
17	7.10.887	Sticker - Toolbox	01	01	01
18	7.10.390	Sticker - Reflective triangle - Machine in motion	01	01	01
19	7.10.159	Sticker - Red/White Reflective Strip	04	04	04
20	7.10.450	Sticker - Reflective strip white / red	04	04	04
21	7.10.928	Sticker - TD72D x 24 x 9	02		
21	7.10.913	Sticker - TD84D x 24 x 9		02	
21	7.10.944	Sticker - TD96D x 24 x 9			02
22	7.10.920	Sticker - Manual Container.....	01	01	01
23	7.10.915	Sticker - Height regulator adjustment	01	01	01
24	7.10.916	Sticker - Height adjuster ruler.....	01	01	01

TAB 5	72 D	84D	96 D
Front left side	7.10.932	7.10.903	7.10.948
Front right center	7.10.936	7.10.904	7.10.952
Front left center	7.10.935	7.10.905	7.10.951
Rear right side	7.10.931	7.10.906	7.10.947
Rear right cente	7.10.934	7.10.907	7.10.950
Rear left center	7.10.933	7.10.908	7.10.949
Rear left side	7.10.930	7.10.909	7.10.946
Front right side	7.10.929	7.10.910	7.10.945

CODE	PAGES	CODE	PAGES	CODE	PAGES	CODE	PAGES	CODE	PAGES	CODE	PAGES	CODE	PAGES
11.01.015	P22 S04	5.10.479	P05 S08	5.11.905	P05 S63	5.12.1911	P11 S03	5.12.2026	P07 S66	5.21.138	P09 S48	5.25.1436	P07 S12
11.01.015	P23 S08	5.10.479	P07 S62	5.11.906	P29 S04	5.12.1912	P05 S46	5.12.2201	P07 S24	5.22.249	P19 S14	5.25.1436	P09 S12
11.01.016	P19 S02	5.10.479	P09 S62	5.11.907	P18 S15	5.12.1912	P07 S38	5.12.2201	P09 S24	5.22.249	P20 S14	5.25.1436	P11 S13
11.01.016	P20 S02	5.10.480	P05 S71	5.11.912	P05 S57	5.12.1912	P09 S38	5.12.2201	P11 S33	5.22.249	P21 S15	5.25.1439	P18 S04
11.01.016	P21 S02	5.10.481	P19 S18	5.11.927	P21 S24	5.12.1915	P29 S08	5.12.730	P14 S01	5.22.249	P22 S16	5.25.1440	P05 S48
11.01.016	P22 S02	5.10.481	P20 S18	5.11.928	P22 S25	5.12.1916	P13 S34	5.12.730	P16 S23	5.22.250	P19 S14	5.25.1442	P16 S07
11.01.016	P22 S03	5.10.481	P21 S19	5.11.930	P20 S23	5.12.1917	P17 S31	5.12.744	P24 S10	5.22.250	P20 S14	5.25.1443	P16 S12
11.01.016	P23 S09	5.10.481	P22 S20	5.11.931	P19 S23	5.12.1917	P25 S13	5.12.746	P24 S11	5.22.250	P21 S15	5.25.1445	P16 S03
11.01.017	P19 S02	5.11.322	P17 S27	5.11.941	P22 S25	5.12.1918	P13 S30	5.14.429	P17 S20	5.22.250	P22 S16	5.25.1446	P05 S32
11.01.017	P20 S02	5.11.322	P25 S09	5.11.943	P21 S24	5.12.1919	P24 S12	5.14.799	P25 S02	5.22.252	P05 S30	5.25.1446	P31 S10
11.01.017	P21 S02	5.11.333	P17 S23	5.11.947	P05 S57	5.12.1920	P24 S15	5.14.864	P15 S02	5.22.253	P05 S31	5.25.1447	P29 S09
11.01.017	P22 S02	5.11.333	P25 S05	5.11.982	P05 S44	5.12.1921	P24 S14	5.14.865	P15 S03	5.22.253	P31 S02	5.25.1448	P05 S68
11.01.017	P22 S03	5.11.863	P19 S20	5.12.1620	P07 S46	5.12.1923	P24 S09	5.14.866	P15 S01	5.22.254	P19 S04	5.25.1449	P07 S61
11.01.017	P23 S10	5.11.863	P20 S20	5.12.1620	P09 S46	5.12.1924	P24 S13	5.14.867	P17 S10	5.22.254	P20 S04	5.25.1449	P09 S61
11.01.024	P21 S03	5.11.863	P21 S21	5.12.1620	P16 S21	5.12.1926	P18 S14	5.14.868	P07 S30	5.22.254	P21 S05	5.25.1450	P05 S64
11.01.024	P23 S02	5.11.863	P22 S22	5.12.1841	P05 S39	5.12.1932	P07 S24	5.14.868	P09 S30	5.22.254	P22 S06	5.25.1452	P18 S17
5.10.085	P07 S69	5.11.879	P07 S10	5.12.1858	P24 S16	5.12.1932	P09 S24	5.14.869	P16 S22	5.22.255	P17 S12	5.25.1453	P05 S23
5.10.085	P09 S69	5.11.879	P09 S10	5.12.1869	P05 S26	5.12.1932	P11 S33	5.14.870	P07 S47	5.22.256	P29 S07	5.25.1459	P07 S52
5.10.085	P16 S04	5.11.879	P11 S08	5.12.1874	P05 S14	5.12.1933	P07 S20	5.14.870	P09 S47	5.22.264	P31 S01	5.25.1459	P09 S52
5.10.085	P19 S17	5.11.881	P16 S01	5.12.1875	P05 S02	5.12.1935	P05 S33	5.14.871	P21 S01	5.23.044	P28 S07	5.25.1459	P11 S37
5.10.085	P20 S17	5.11.883	P05 S47	5.12.1879	P09 S29	5.12.1935	P05 S33	5.14.873	P22 S01	5.23.045	P13 S05	5.25.1479	P11 S17
5.10.085	P21 S18	5.11.883	P07 S39	5.12.1880	P07 S29	5.12.1937	P05 S34	5.14.874	P20 S01	5.23.054	P13 S02	5.25.1489	P17 S32
5.10.085	P22 S19	5.11.883	P09 S39	5.12.1882	P07 S59	5.12.1937	P05 S34	5.14.874	P22 S01	5.23.054	P28 S03	5.25.504	P16 S17
5.10.085	P29 S10	5.11.884	P17 S07	5.12.1882	P09 S59	5.12.1939	P09 S20	5.14.875	P25 S12	5.23.065	P28 S08	5.25.860	P15 S08
5.10.146	P14 S05	5.11.884	P19 S13	5.12.1883	P07 S43	5.12.1941	P07 S21	5.14.876	P25 S06	5.23.080	P13 S45	5.25.861	P15 S07
5.10.146	P16 S27	5.11.884	P20 S13	5.12.1883	P09 S43	5.12.1943	P05 S35	5.14.877	P05 S25	5.25.1107	P13 S65	5.25.999	P07 S55
5.10.239	P05 S05	5.11.884	P21 S14	5.12.1885	P17 S19	5.12.1943	P05 S35	5.14.878	P05 S50	5.25.1427	P07 S42	5.25.999	P09 S55
5.10.239	P07 S27	5.11.884	P22 S15	5.12.1885	P25 S01	5.12.1945	P05 S36	5.14.888	P29 S15	5.25.1427	P09 S42	5.26.052	P05 S01
5.10.239	P09 S27	5.11.885	P21 S24	5.12.1886	P05 S42	5.12.1945	P05 S36	5.14.889	P19 S24	5.25.1427	P15 S09	5.26.059	P07 S01
5.10.239	P11 S35	5.11.886	P19 S23	5.12.1887	P17 S06	5.12.1947	P09 S21	5.14.889	P20 S24	5.25.1428	P05 S04	5.26.061	P09 S01
5.10.275	P15 S21	5.11.887	P22 S25	5.12.1888	P19 S12	5.12.1977	P07 S20	5.14.889	P21 S25	5.25.1428	P07 S26	5.27.327	P17 S09
5.10.356	P07 S14	5.11.888	P20 S23	5.12.1888	P20 S12	5.12.1979	P07 S21	5.14.889	P22 S26	5.25.1428	P09 S26	5.27.328	P17 S08
5.10.356	P09 S14	5.11.889	P05 S44	5.12.1888	P21 S13	5.12.1981	P09 S20	5.14.907	P19 S01	5.25.1428	P11 S34	5.27.329	P07 S18
5.10.356	P11 S14	5.11.890	P05 S22	5.12.1888	P22 S14	5.12.1983	P09 S21	5.14.911	P21 S01	5.25.1429	P05 S28	5.27.329	P09 S18
5.10.468	P07 S33	5.11.891	P05 S20	5.12.1905	P16 S09	5.12.1991	P05 S36	5.14.912	P22 S01	5.25.1430	P05 S27	5.27.329	P11 S21
5.10.468	P09 S33	5.11.892	P16 S14	5.12.1906	P18 S08	5.12.1993	P05 S33	5.14.920	P20 S01	5.25.1430	P07 S34	5.27.332	P24 S02
5.10.468	P15 S11	5.11.893	P07 S32	5.12.1907	P18 S07	5.12.1995	P05 S34	5.14.921	P19 S01	5.25.1430	P09 S34	5.27.333	P24 S02
5.10.469	P30 S03	5.11.893	P09 S32	5.12.1908	P07 S22	5.12.1997	P05 S35	5.14.931	P21 S01	5.25.1431	P05 S16	5.27.334	P05 S03
5.10.470	P05 S19	5.11.893	P15 S10	5.12.1908	P09 S22	5.12.2001	P07 S21	5.14.931	P22 S01	5.25.1432	P05 S70	5.27.339	P17 S09
5.10.471	P16 S13	5.11.899	P29 S13	5.12.1909	P05 S52	5.12.2009	P07 S20	5.18.002	P27 S05	5.25.1433	P07 S31	5.27.340	P17 S08
5.10.472	P16 S34	5.11.900	P29 S02	5.12.1910	P07 S16	5.12.2013	P09 S20	5.18.003	P05 S53	5.25.1433	P09 S31	5.27.341	P07 S18
5.10.473	P17 S18	5.11.901	P29 S01	5.12.1910	P09 S16	5.12.2019	P09 S21	5.18.004	P05 S15	5.25.1434	P05 S29	5.27.341	P09 S18
5.10.474	P17 S13	5.11.903	P29 S03	5.12.1910	P11 S09	5.12.2021	P31 S03	5.20.026	P13 S37	5.25.1435	P07 S72	5.27.345	P17 S09
5.10.475	P17 S11	5.11.904	P07 S54	5.12.1911	P07 S05	5.12.2022	P05 S72	5.21.137	P05 S67	5.25.1435	P09 S72	5.27.346	P17 S08
5.10.476	P13 S09	5.11.904	P09 S54	5.12.1911	P09 S05	5.12.2025	P09 S66	5.21.138	P07 S48	5.25.1435	P11 S16	5.27.347	P11 S21

CODE	PAGES	CODE	PAGES	CODE	PAGES	CODE	PAGES	CODE	PAGES	CODE	PAGES	CODE	PAGES
5.28.1034	P17 S01	5.29.1020	P20 S06	7.10.005	P18 S11	7.10.497	P13 S69	7.11.285	P05 S73	7.12.658	P09 S57	7.22.740	P13 S49
5.28.1035	P17 S02	5.29.1020	P21 S07	7.10.005	P24 S05	7.10.671	P32 S10	7.11.285	P26 S11	7.14.005	P13 S06	7.22.741	P13 S51
5.28.1036	P07 S04	5.29.1020	P22 S10	7.10.005	P26 S04	7.10.879	P32 S14	7.11.288	P13 S52	7.14.304	P26 S09	7.22.742	P13 S50
5.28.1036	P09 S04	5.29.1020	P23 S12	7.10.005	P27 S07	7.10.882	P32 S09	7.11.290	P07 S13	7.16.017	P07 S40	7.22.743	P13 S46
5.28.1036	P11 S02	5.29.1161	P13 S12	7.10.006	P11 S31	7.10.885	P32 S03	7.11.290	P09 S13	7.16.017	P09 S40	7.22.744	P13 S48
5.28.1037	P24 S01	5.29.1161	P24 S06	7.10.006	P17 S04	7.10.886	P32 S16	7.11.290	P11 S12	7.16.017	P14 S13	7.22.745	P13 S47
5.28.1038	P24 S01	5.29.1162	P24 S07	7.10.006	P19 S09	7.10.887	P32 S17	7.12.003	P05 S69	7.16.017	P16 S16	7.22.778	P05 S45
5.28.1039	P19 S15	5.29.1180	P17 S14	7.10.006	P20 S09	7.10.890	P32 S11	7.12.003	P07 S15	7.16.017	P26 S07	7.22.779	P13 S35
5.28.1039	P20 S15	5.29.1181	P07 S02	7.10.006	P21 S10	7.10.891	P32 S15	7.12.003	P09 S15	7.16.017	P27 S03	7.22.781	P13 S46
5.28.1039	P21 S16	5.29.1181	P09 S02	7.10.006	P22 S12	7.10.903	P32 S12	7.12.003	P11 S15	7.16.019	P15 S25	7.23.097	P28 S06
5.28.1039	P22 S17	5.29.1182	P05 S58	7.10.006	P23 S06	7.10.904	P32 S12	7.12.003	P16 S15	7.19.015	P17 S24	7.23.126	P13 S73
5.28.1040	P19 S15	5.29.1184	P07 S03	7.10.007	P05 S12	7.10.905	P32 S12	7.12.004	P05 S24	7.19.015	P25 S07	7.25.001	P07 S60
5.28.1040	P20 S15	5.29.1184	P09 S03	7.10.007	P07 S08	7.10.906	P32 S12	7.12.004	P07 S35	7.19.016	P17 S25	7.25.001	P09 S60
5.28.1040	P21 S16	5.29.1184	P11 S01	7.10.007	P09 S08	7.10.907	P32 S12	7.12.004	P09 S35	7.19.016	P25 S08	7.25.007	P17 S03
5.28.1040	P22 S17	5.29.1187	P30 S02	7.10.007	P11 S06	7.10.908	P32 S12	7.12.005	P15 S24	7.20.114	P13 S59	7.25.007	P23 S05
5.28.1041	P27 S04	5.29.1188	P18 S06	7.10.007	P31 S05	7.10.909	P32 S12	7.12.006	P14 S07	7.20.115	P13 S61	7.25.009	P11 S26
5.28.1042	P05 S51	5.29.1189	P18 S05	7.10.009	P05 S09	7.10.910	P32 S12	7.12.006	P16 S08	7.20.116	P13 S58	7.25.012	P13 S18
5.28.1043	P16 S02	5.29.1191	P13 S32	7.10.009	P31 S08	7.10.912	P32 S13	7.12.006	P29 S16	7.20.117	P13 S62	7.25.013	P11 S29
5.28.1044	P07 S41	5.29.1192	P13 S24	7.10.017	P13 S71	7.10.913	P32 S21	7.12.045	P07 S25	7.20.118	P13 S60	7.25.013	P13 S15
5.28.1044	P09 S41	5.29.1193	P13 S23	7.10.017	P28 S05	7.10.915	P32 S23	7.12.045	P09 S25	7.21.070	P11 S19	7.25.014	P05 S41
5.28.1049	P18 S01	5.29.1194	P13 S39	7.10.022	P13 S67	7.10.916	P32 S24	7.12.045	P11 S38	7.21.071	P11 S20	7.25.014	P07 S51
5.28.1050	P18 S03	5.29.1195	P13 S40	7.10.022	P17 S30	7.10.920	P32 S22	7.12.063	P29 S11	7.22.012	P13 S28	7.25.014	P09 S51
5.28.1051	P18 S02	5.29.1212	P05 S55	7.10.022	P25 S16	7.10.928	P32 S21	7.12.084	P16 S19	7.22.014	P13 S21	7.25.014	P11 S24
5.28.1052	P11 S18	5.29.1214	P07 S03	7.10.023	P11 S27	7.10.929	P32 S12	7.12.1024	P05 S65	7.22.015B	P13 S36	7.25.014	P18 S12
5.28.1053	P11 S25	5.29.1214	P09 S03	7.10.024	P05 S18	7.10.930	P32 S12	7.12.1033	P13 S19	7.22.042	P13 S35	7.25.014	P27 S08
5.28.1054	P23 S01	5.29.1217	P11 S01	7.10.024	P18 S10	7.10.931	P32 S12	7.12.1033	P26 S10	7.22.171	P13 S22	7.25.015	P07 S45
5.28.1055	P26 S08	5.29.1233	P13 S72	7.10.024	P24 S04	7.10.932	P32 S12	7.12.1034	P07 S36	7.22.254	P13 S36	7.25.015	P09 S45
5.28.1056	P07 S06	5.29.179	P13 S68	7.10.024	P26 S05	7.10.933	P32 S12	7.12.1034	P09 S36	7.22.393	P13 S56	7.25.015	P11 S32
5.28.1056	P09 S06	5.29.517	P14 S08	7.10.025	P05 S59	7.10.934	P32 S12	7.12.1034	P13 S27	7.22.441	P13 S43	7.25.015	P15 S06
5.28.1056	P11 S41	5.29.517	P16 S29	7.10.025	P07 S65	7.10.935	P32 S12	7.12.1036	P13 S01	7.22.484	P13 S57	7.25.015	P17 S05
5.28.1057	P13 S08	5.29.553	P17 S26	7.10.025	P09 S65	7.10.936	P32 S12	7.12.1036	P26 S01	7.22.676	P13 S31	7.25.015	P19 S10
5.28.1059	P05 S11	5.29.553	P25 S11	7.10.025	P29 S05	7.10.944	P32 S21	7.12.1045	P16 S06	7.22.718	P05 S45	7.25.015	P20 S10
5.28.1084	P11 S04	5.31.130	P13 S07	7.10.051	P13 S66	7.10.945	P32 S12	7.12.1047	P13 S38	7.22.727	P29 S17	7.25.015	P21 S11
5.28.1090	P17 S01	7.10.003	P13 S17	7.10.101	P15 S19	7.10.946	P32 S12	7.12.1047	P27 S01	7.22.728	P13 S04	7.25.015	P22 S13
5.28.1098	P17 S01	7.10.003	P14 S10	7.10.159	P32 S19	7.10.947	P32 S12	7.12.1072	P07 S11	7.22.729	P13 S03	7.25.015	P23 S07
5.28.1111	P07 S70	7.10.003	P16 S31	7.10.222	P32 S08	7.10.948	P32 S12	7.12.1072	P09 S11	7.22.731	P13 S29	7.25.015	P29 S06
5.28.1111	P09 S70	7.10.003	P17 S29	7.10.265	P32 S01	7.10.949	P32 S12	7.12.1072	P11 S11	7.22.732	P13 S20	7.25.015	P30 S04
5.28.1112	P07 S67	7.10.003	P25 S15	7.10.270	P32 S02	7.10.950	P32 S12	7.12.1072	P13 S41	7.22.733	P13 S26	7.25.016	P05 S13
5.28.1112	P09 S67	7.10.004	P11 S28	7.10.272	P32 S07	7.10.951	P32 S12	7.12.1116	P13 S38	7.22.734	P13 S25	7.25.016	P07 S09
5.28.1113	P09 S68	7.10.004	P13 S14	7.10.273	P32 S05	7.10.952	P32 S12	7.12.1116	P27 S01	7.22.735	P13 S53	7.25.016	P09 S09
5.28.1114	P07 S68	7.10.005	P07 S50	7.10.346	P32 S04	7.11.008	P07 S64	7.12.459	P05 S62	7.22.736	P13 S33	7.25.016	P11 S07
5.28.1115	P18 S02	7.10.005	P09 S50	7.10.372	P28 S02	7.11.008	P09 S64	7.12.459	P11 S40	7.22.736	P13 S54	7.25.016	P16 S11
5.28.1116	P18 S03	7.10.005	P11 S23	7.10.390	P32 S18	7.11.008	P26 S02	7.12.502	P15 S04	7.22.737	P13 S55	7.25.016	P19 S22
5.28.1117	P11 S18	7.10.005	P13 S11	7.10.413	P32 S06	7.11.008	P27 S02	7.12.635	P15 S16	7.22.738	P13 S42	7.25.016	P20 S22
5.29.1020	P19 S06	7.10.005	P17 S15	7.10.450	P32 S20	7.11.011	P15 S15	7.12.658	P07 S57	7.22.739	P13 S44	7.25.016	P21 S23

CODE	PAGES	CODE	PAGES	CODE	PAGES	CODE	PAGES	CODE	PAGES	CODE	PAGES	CODE	PAGES
7.25.016	P22 S24	7.25.213	P05 S17	7.25.589	P14 S11	7.29.236	P15 S23						
7.25.016	P31 S06	7.25.219	P30 S05	7.25.589	P16 S32	7.29.342	P20 S11						
7.25.020	P19 S07	7.25.229	P07 S71	7.25.598	P15 S13	7.29.342	P21 S06						
7.25.020	P20 S07	7.25.229	P09 S71	7.25.602	P19 S16	7.29.342	P23 S11						
7.25.020	P21 S08	7.25.230	P13 S13	7.25.602	P20 S16	7.29.343	P19 S11						
7.25.020	P22 S08	7.25.233	P18 S16	7.25.602	P21 S17	7.29.343	P20 S05						
7.25.020	P23 S03	7.25.244	P19 S21	7.25.602	P22 S18	7.29.343	P21 S12						
7.25.020	P23 S13	7.25.244	P20 S21	7.25.614	P25 S10	7.29.343	P22 S09						
7.25.025	P05 S21	7.25.244	P21 S22	7.25.625	P07 S23	7.29.389	P07 S63						
7.25.030	P05 S38	7.25.244	P22 S23	7.25.625	P09 S23	7.29.389	P09 S63						
7.25.033	P13 S63	7.25.269	P05 S07	7.25.642	P27 S06	7.29.389	P11 S39						
7.25.034	P05 S40	7.25.296	P19 S08	7.25.645	P05 S49	7.29.399	P22 S07						
7.25.034	P18 S13	7.25.296	P20 S08	7.25.670	P07 S07	7.29.399	P23 S04						
7.25.034	P26 S06	7.25.296	P21 S09	7.25.670	P09 S07	7.29.400	P19 S05						
7.25.052	P11 S22	7.25.296	P22 S11	7.25.670	P11 S05	7.31.133	P28 S04						
7.25.058	P16 S18	7.25.296	P23 S14	7.25.685	P15 S26	7.31.162	P28 S01						
7.25.059	P15 S27	7.25.297	P07 S19	7.25.748	P15 S22								
7.25.064	P17 S16	7.25.297	P09 S19	7.25.970	P24 S03								
7.25.064	P18 S09	7.25.297	P11 S30	7.25.984	P05 S54								
7.25.064	P26 S03	7.25.377	P30 S01	7.25.984	P31 S04								
7.25.068	P17 S28	7.25.423	P07 S56	7.25.988	P16 S10								
7.25.068	P25 S14	7.25.423	P09 S56	7.27.003	P15 S17								
7.25.070	P05 S10	7.25.436	P05 S61	7.27.004	P14 S02								
7.25.070	P31 S09	7.25.436	P07 S17	7.27.004	P15 S20								
7.25.080	P14 S09	7.25.436	P09 S17	7.27.004	P16 S24								
7.25.080	P16 S30	7.25.436	P11 S10	7.27.151	P16 S20								
7.25.085	P29 S14	7.25.437	P13 S70	7.27.152	P14 S04								
7.25.1004	P31 S07	7.25.441	P19 S25	7.27.152	P16 S26								
7.25.118	P05 S06	7.25.441	P20 S25	7.27.177	P14 S03								
7.25.118	P07 S28	7.25.441	P21 S26	7.27.177	P16 S25								
7.25.118	P09 S28	7.25.441	P22 S27	7.27.194	P17 S22								
7.25.118	P11 S36	7.25.447	P07 S49	7.27.194	P25 S04								
7.25.118	P15 S12	7.25.447	P09 S49	7.27.195	P17 S21								
7.25.138	P07 S44	7.25.448	P17 S17	7.27.195	P25 S03								
7.25.138	P09 S44	7.25.468	P05 S60	7.27.234	P15 S14								
7.25.138	P15 S05	7.25.517	P05 S43	7.27.254	P15 S18								
7.25.141	P13 S64	7.25.517	P07 S37	7.27.277	P07 S58								
7.25.144	P29 S12	7.25.517	P09 S37	7.27.277	P09 S58								
7.25.159	P13 S16	7.25.518	P13 S10	7.28.025	P05 S66								
7.25.176	P19 S19	7.25.518	P24 S08	7.28.115	P19 S03								
7.25.176	P20 S19	7.25.536	P14 S12	7.28.115	P20 S03								
7.25.176	P21 S20	7.25.536	P16 S33	7.28.115	P21 S04								
7.25.176	P22 S21	7.25.577	P05 S37	7.28.115	P22 S05								
7.25.205	P14 S06	7.25.577	P07 S53	7.29.009	P05 S56								
7.25.205	P16 S28	7.25.577	P09 S53	7.29.009	P16 S05								