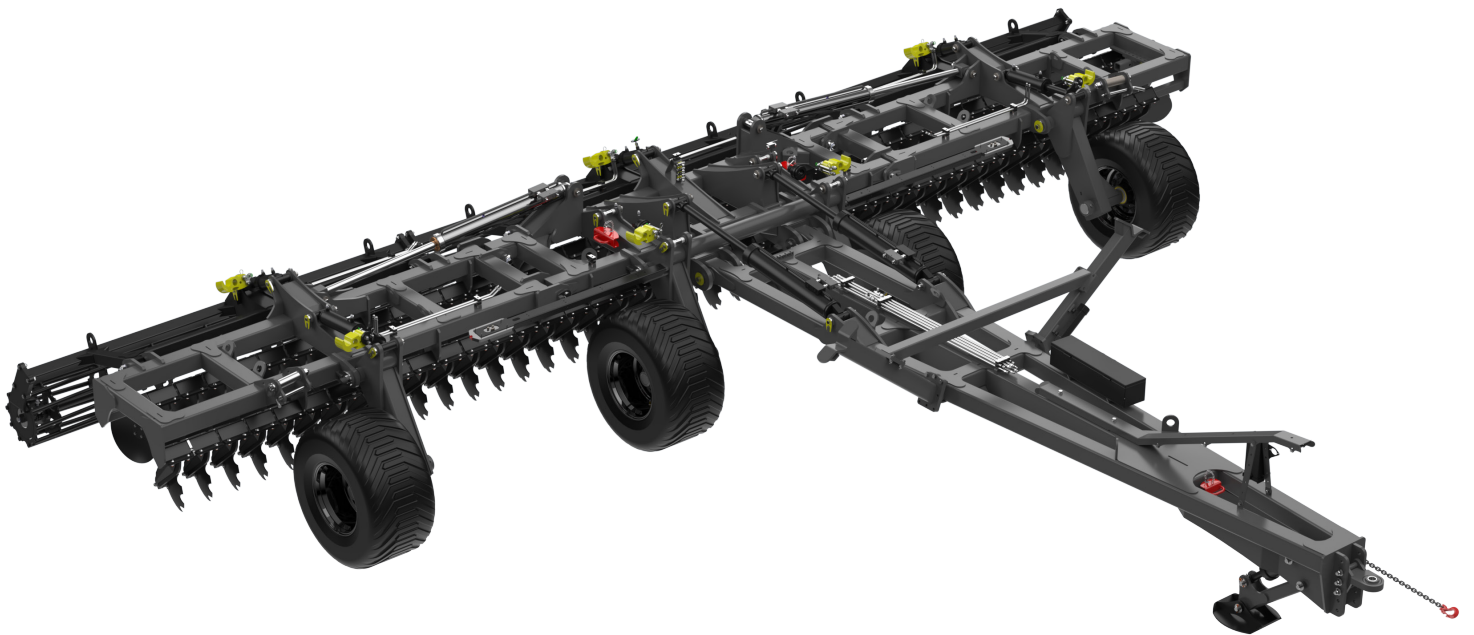




## ***DISK HARROW SPEED DISK***



**EXCLUSIVELY DEVELOPED  
FOR AMERICAN FARMERS.**

# **PARTS CATALOG**

## **XT3010**

## **DH84D**

## **DISK SPACING 10"**

Parts Catalog: 7.12.1131

Date: 02/10/2025

REVISION - 00

## Disk Harrow Speed Disk Antoniosi



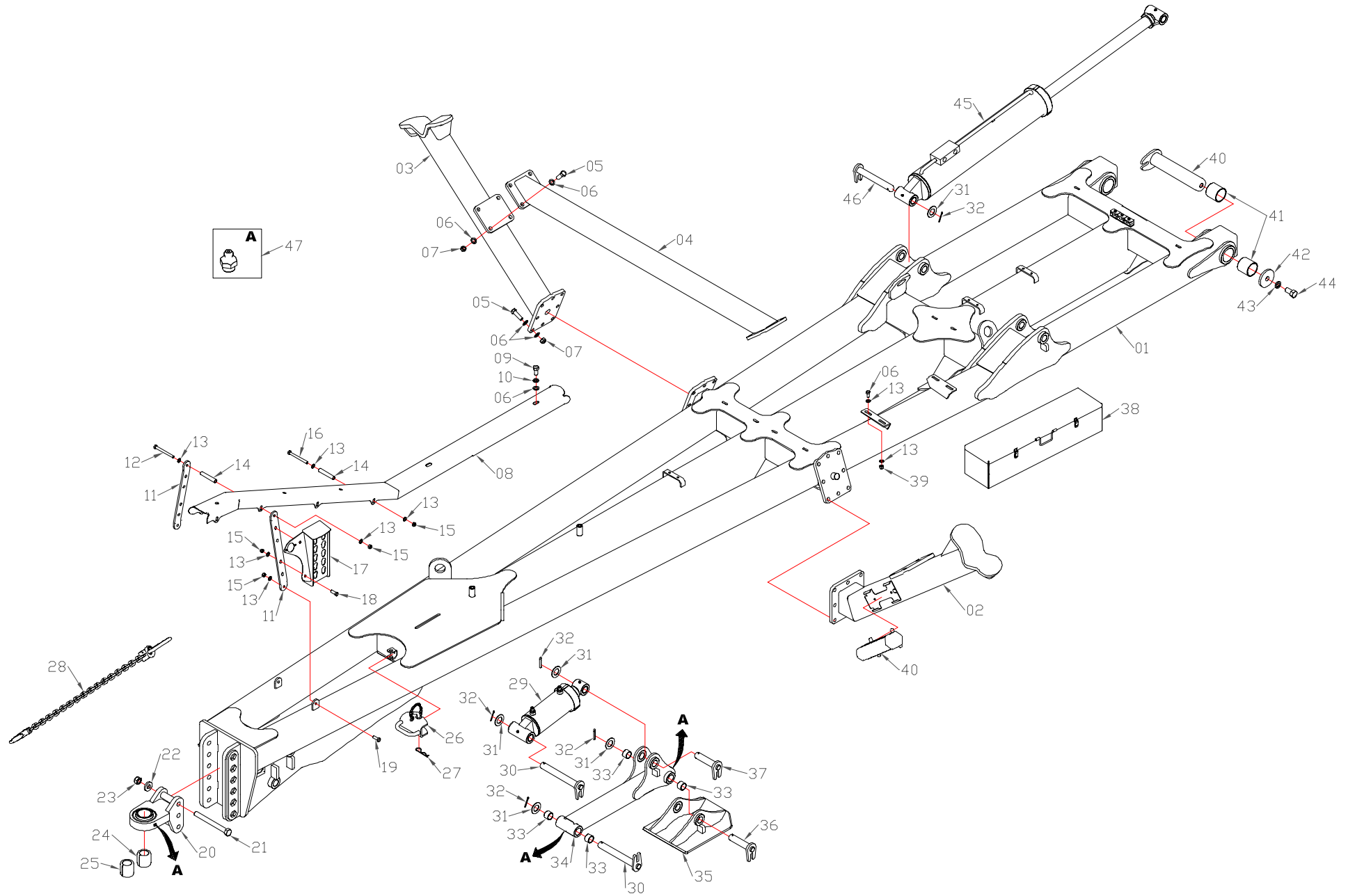
# DISK HARROW SPEED DISK

## INDEX

PAGE	PRODUCT DESCRIPTION	PAGE	PRODUCT DESCRIPTION
04	Work Header	24	Crushing roller Cylinder / Center Frame Cylinder
05	Parts List	24	Parts List
06	Central Chassis	25	Safety Valve Kit / Lighting System
07	Parts List	25	Parts List
08	Left Side Chassis	26	Stickers
09	Parts List	26	Parts List
10	Right Side Chassis	27	Analytical Index
11	Parts List		
12	Hydraulic System Header / Rest		
12	Parts List		
13	Hydraulic System Side Chassis		
13	Parts List		
14	Hydraulic System Wheel Set		
14	Parts List		
15	Hydraulic System Crushing roller		
15	Parts List		
16	Central Crushing roller		
16	Parts List		
17	Left and Right Side Crushing roller		
17	Parts List		
18	Bearing		
18	Parts List		
19	Rear / Front Disk Set		
19	Parts List		
20	Wheel Hub / Tire		
20	Parts List		
21	Central Chassis Cylinder / Rest Cylinder		
21	Parts List		
22	Left/Right Central Wheel Cylinder		
22	Parts List		
23	Left / Right Side Wheel Set Cylinder		
23	Parts List		

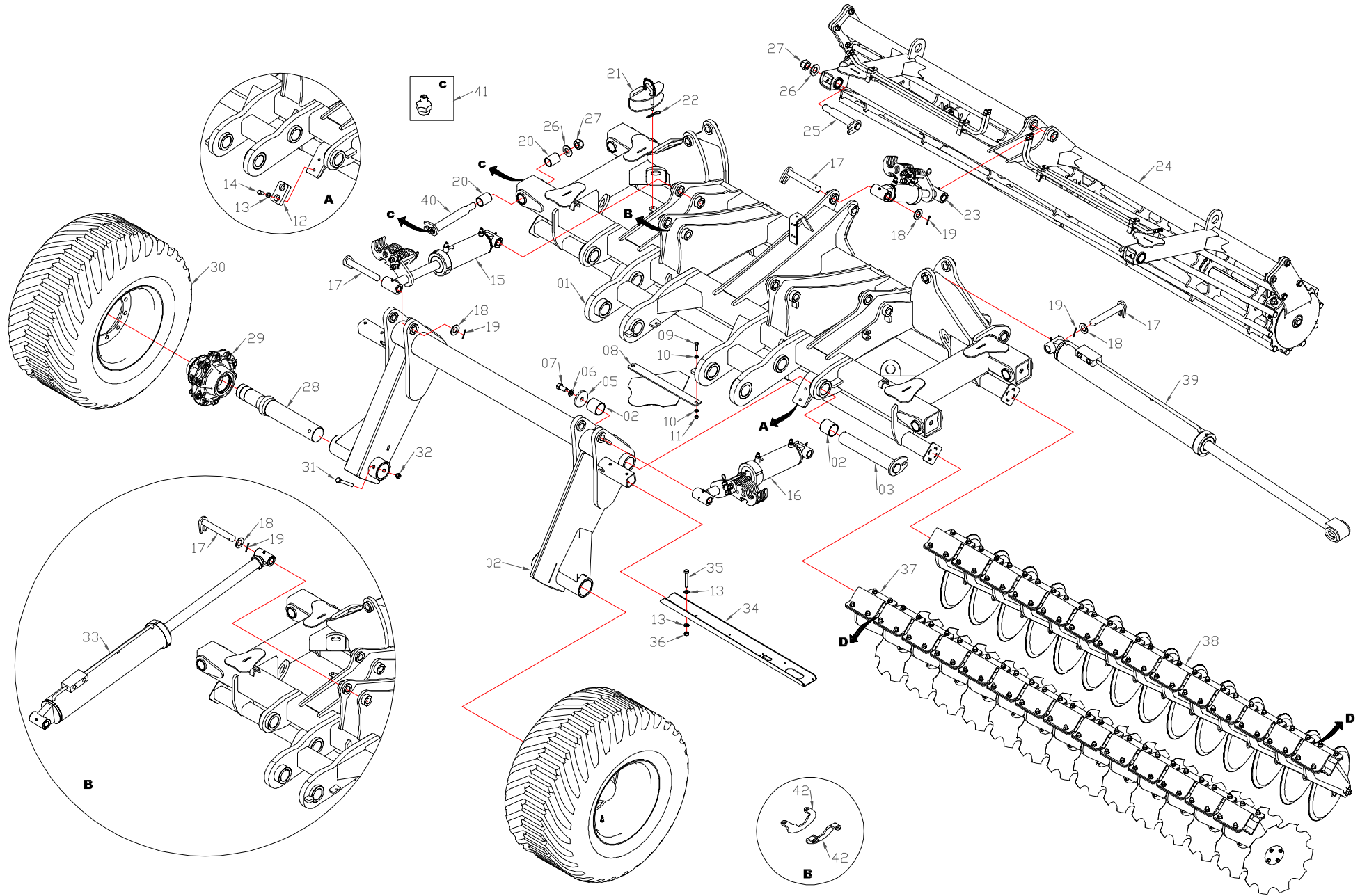
\*The manufacturer reserves the right to make changes to this product without prior notice.

# WORK HEADER



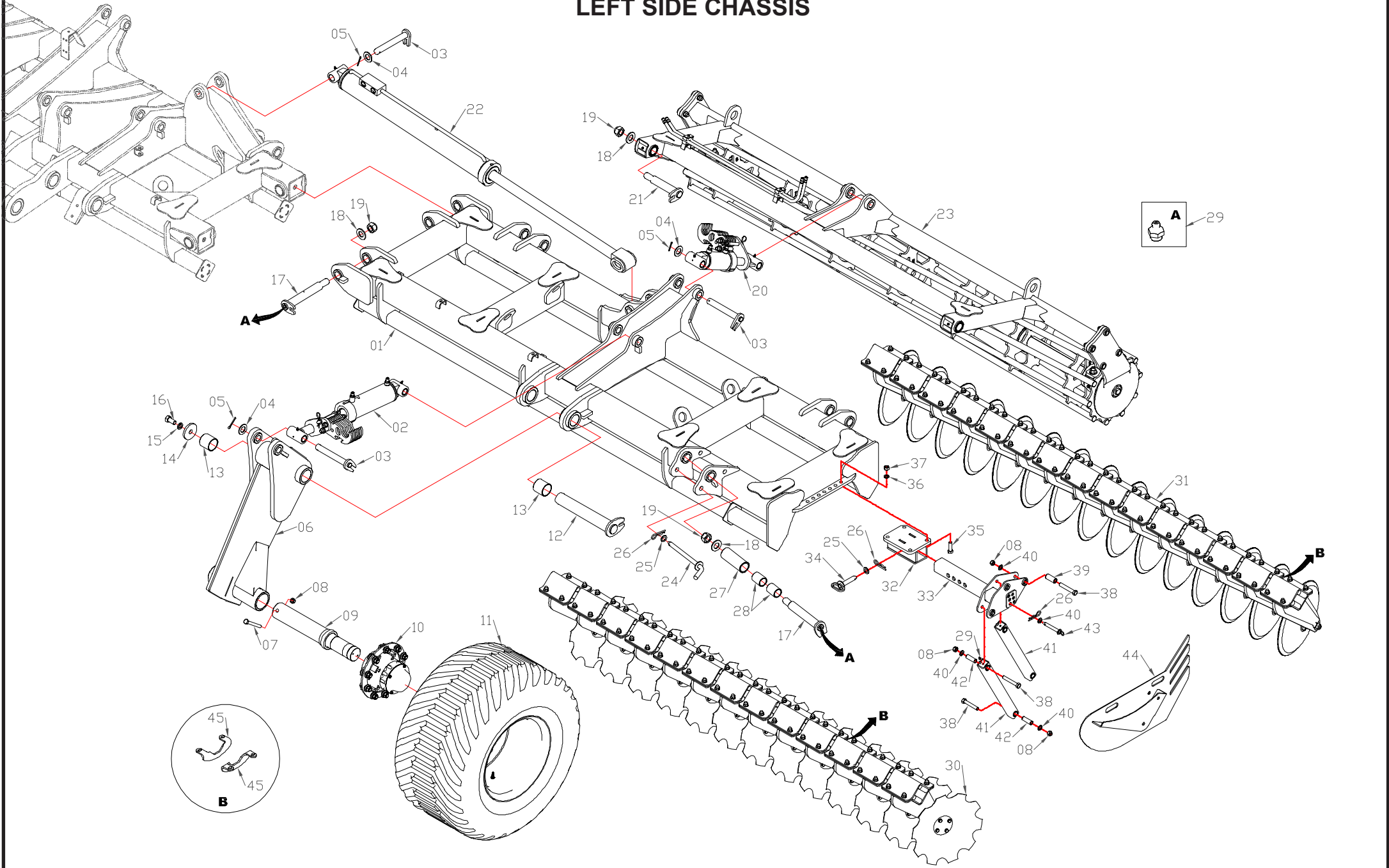
ITEM	CODE	DESCRIPTION	QTY.	ITEM	CODE	DESCRIPTION	QTY.
01	5.12.2259	Header.....	01	40	5.25.1574	Header latch pin .....	02
02	5.11.1005	Left arm of the bulldozer.....	01	41	5.11.960	Busshing.....	04
03	5.11.1004	Right arm of the bulldozer .....	01	42	5.10.496	Ø 27 x Ø 110mm washer.....	02
04	5.29.1237	Supporte lock.....	01	43	7.10.009	1" pressure washer.....	02
05	7.25.294	3/4" x 3" hex screw .....	24	44	7.25.696	1" x 2" hex screw .....	02
06	5.10.459	Ø 20,5 x Ø 45mm washer.....	50	45	5.12.2150	Central chassis hydraulic cylinder .....	02
07	7.25.176	3/4" self-locking nut .....	24	46	5.25.1534	Ø 38,1 x 269mm pin .....	02
08	5.12.2239	Protective and fastening gutter.....	01	47	7.16.017	1/8" straight grease fitting .....	03
09	7.25.041	3/4" x 2" hex screw .....	02	48	7.28.025	Manual door support.....	01
10	7.10.007	3/4" pressure washer.....	02	49	5.13.216	Hose rest .....	01
11	5.28.1172	Gutter support.....	02	50	5.29.1319	Bottom cover .....	01
12	7.25.149	1/2" x 6.1/2" hex screw .....	01				
13	7.10.024	1/2" flat washer.....	20				
14	5.29.1292	Ø 20 x Ø 16 x 114mm round tube .....	04				
15	7.25.025	1/2" self-locking nut .....	08				
16	7.25.940	1/2" x 5.1/2" hex screw .....	03				
17	5.13.224	Complete hose rest .....	01				
18	7.25.034	1/2" x 1.1/4" hex screw .....	06				
19	7.25.038	1/2" x 1.1/2" hex screw.....	02				
20	5.14.987	Tractor hitch.....	01				
21	7.25.1018	1/2" x 10" hex screw .....	03				
22	5.10.371	Ø 26 x Ø 56mm washer.....	03				
23	7.25.109	1" self-locking nut .....	03				
24	5.11.1009	Ø 52,5mm hitch pin bushing.....	01				
25	5.11.1010	Ø 40mm hitch pin bushing.....	01				
26	5.29.1244	Safety lock.....	01				
27	7.29.009	Locking R.....	01				
28	7.12.1024	Safety chain.....	01				
29	5.12.2154	Rest hydraulic cylinder .....	01				
30	5.25.1552	Ø 38,1 x 295mm pin .....	02				
31	5.10.239	Ø 39,7 x Ø 70mm washer.....	06				
32	7.12.045	5/16" x 2.1/2" cotter pin .....	04				
33	7.11.008	Hinge Pin Bushing .....	04				
34	5.11.977	Arm of the assembly.....	01				
35	5.28.1155	Kickstand foot.....	01				
36	5.25.1550	Ø 38,1 x 235mm pin .....	01				
37	5.25.1551	Ø 38,1 x 156mm pin .....	01				
38	5.12.1841	Tool box .....	01				
39	7.25.014	1/2" hex nut .....	04				

# CENTRAL CHASSIS



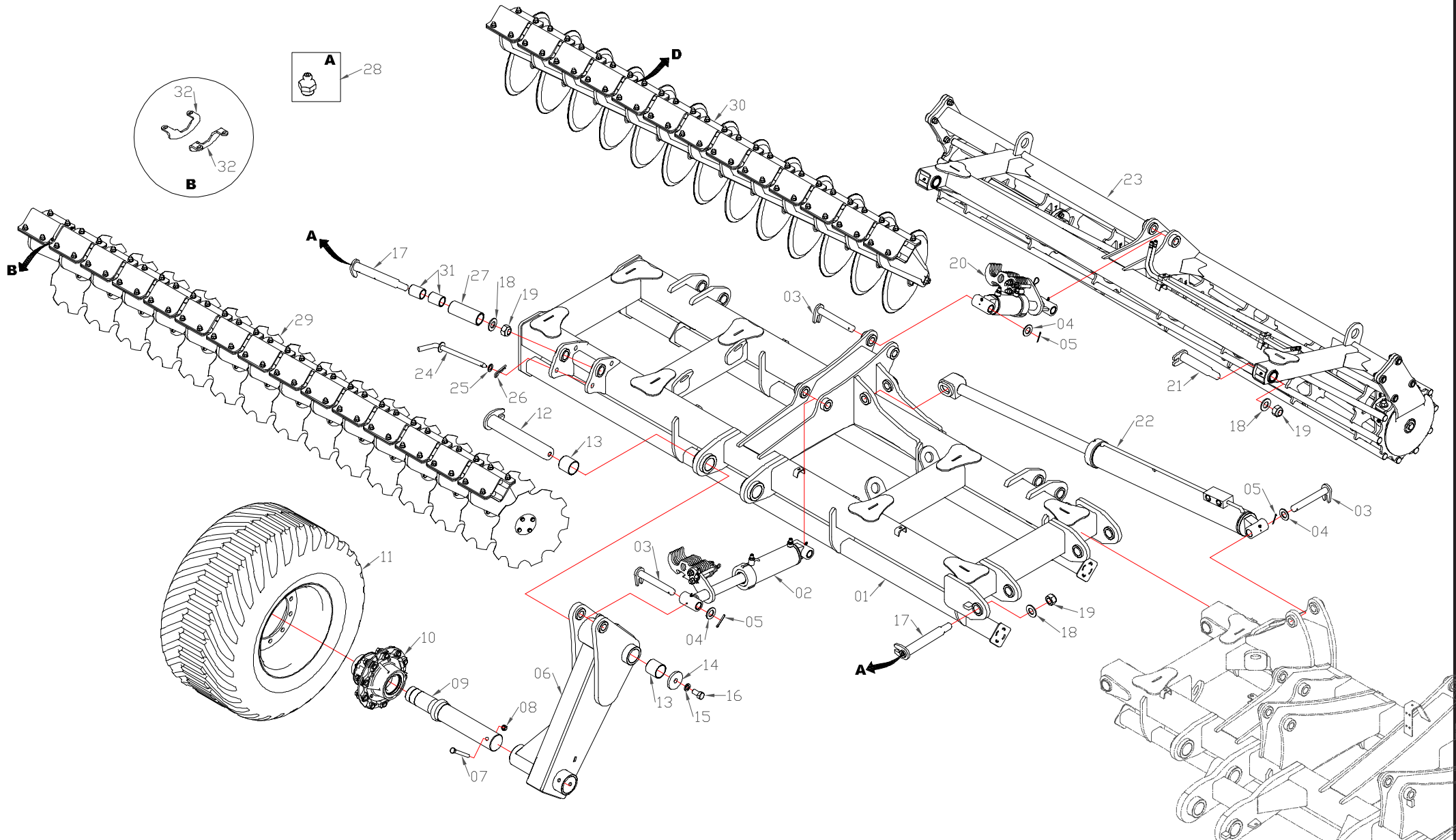
ITEM	CODE	DESCRIPTION	QTY.	ITEM	CODE	DESCRIPTION	QTY.
01	5.12.2131	Central chassis .....	01	40	5.25.1535	Ø 50,8 x x Ø 38,1 x 365mm pin.....	04
02	5.27.368	Central Wheel.....	01	41	7.16.017	1/8" straight grease fitting.....	08
03	5.25.1496	Hitch pin.....	02	42	5.21.166	Disk holder limiter and guide .....	40
04	5.11.960	Busshing.....	04				
05	5.10.496	Ø 27 x Ø 110mm washer.....	02				
06	7.10.009	1" pressure washer.....	02				
07	7.25.696	1" x 2" hex screw .....	02				
08	5.28.1153	Security sticker holder .....	01				
09	7.25.087	1" x 1.3/4" hex screw .....	02				
10	7.10.024	1/2" flat washer.....	04				
11	7.25.025	1/2" self-locking nut .....	02				
12	5.29.1182	Topper.....	02				
13	7.10.025	5/8" flat washer.....	10				
14	7.25.468	5/8" x 1.1/2" hex screw .....	04				
15	5.12.2148	Right hydraulic cylinder of the central wheel set .....	01				
16	5.12.2149	Central wheelset left hydraulic cylinder .....	01				
17	5.25.1534	Ø 38,1 x 269mm pin .....	08				
18	5.10.239	Ø 39,7 x Ø 70mm washer.....	08				
19	7.12.045	5/16" x 2.1/2" cotter pin .....	08				
20	5.11.975	Wear busshing.....	08				
21	5.29.1243	Safety lock.....	02				
22	7.29.009	Locking R.....	02				
23	5.12.2147	Hydraulic cylinder of the crusher roller .....	01				
24	5.27.366	Central mounted crushing roller .....	01				
25	5.25.1536	Ø 50,8 x Ø 38,1 x 285mm pin.....	02				
26	5.10.149	Ø 40 x Ø 75mm washer.....	06				
27	7.25.118	1.1/2" self-locking nut .....	06				
28	5.14.962	Wheel axle.....	02				
29	5.12.2156	Wheel hub .....	02				
30	5.25.322	Complete tire 600/20 - 22,5.....	02				
31	7.25.222	3/4" x 6" hex screw .....	02				
32	7.25.176	3/4" self-locking nut .....	02				
33	5.12.2150	Central chassis hydraulic cylinder .....	02				
34	5.28.1230	Flashlight holder .....	02				
35	7.25.377	5/8" x 4.1/2" hex screw .....	04				
36	7.25.229	5/8" self-locking nut .....	04				
37	5.12.2212	Front disk assembly.....	14				
38	5.12.2214	Rear disk assembly .....	14				
39	5.12.2151	Hydraulic cylinder .....	02				

# LEFT SIDE CHASSIS



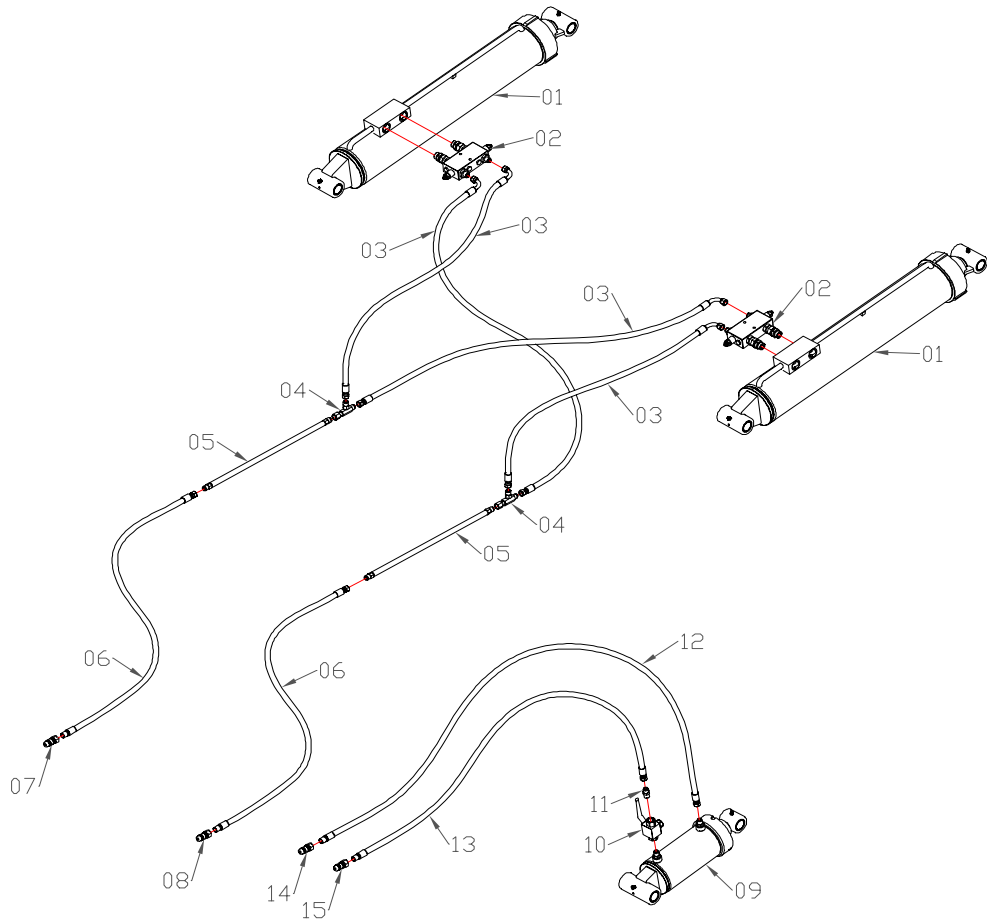
ITEM	CODE	DESCRIPTION	QTY.	ITEM	CODE	DESCRIPTION	QTY.
01	5.12.2130	Left side chassis .....	01	40	5.10.459	Ø 20,5 x Ø 45mm washer.....	04
02	5.12.2153	Left side wheelset hydraulic cylinder .....	01	41	5.29.1318	Trimmer pantograph system tube.....	02
03	5.25.1534	Ø 38,1 x 269mm pin .....	05	42	5.11.1033	Busshing .....	04
04	5.10.239	Ø 39,7 x Ø 70mm washer.....	05	43	5.25.1635	Pantograph lock pin.....	01
05	7.12.045	5/16" x 2.1/2" cotter pin .....	05	44	5.10.527	Sideboard .....	01
06	5.11.972	Left arm of the wheel set .....	01	45	5.21.166	Disk holder limiter and guide .....	40
07	7.25.222	3/4" x 6" hex screw .....	01				
08	7.25.176	3/4" self-locking nut .....	06				
09	5.14.962	Wheel axle.....	01				
10	5.12.2156	Wheel hub .....	01				
11	5.25.322	Complete tire 600/20 - 22,5 .....	01				
12	5.25.1496	Hitch pin.....	01				
13	5.11.960	Busshing.....	02				
14	5.10.496	Ø 27 x Ø 110mm washer.....	01				
15	7.10.009	1" pressure washer.....	01				
16	7.25.696	1" x 2" hex screw .....	01				
17	5.25.1535	Ø 50,8 x x Ø 38,1 x 365mm pin.....	03				
18	5.10.149	Ø 40 x Ø 75mm washer.....	05				
19	7.25.118	1.1/2" self-locking nut .....	05				
20	5.12.2147	Hydraulic cylinder of the crusher roller .....	01				
21	5.25.1536	Ø 50,8 x Ø 38,1 x 285mm pin.....	02				
22	5.12.2151	Hydraulic cylinder .....	01				
23	5.27.374	Left mounted crusher roller.....	01				
24	5.25.1569	Side frame lock pin .....	01				
25	5.10.356	Ø 26 x Ø 45mm washer.....	02				
26	7.29.389	Locking R.....	03				
27	5.11.973	Topper bushing .....	01				
28	5.11.975	Wear busshing.....	02				
29	7.16.017	1/8" straight grease fitting.....	05				
30	5.12.2212	Front disk assembly.....	13				
31	5.12.2214	Rear disk assembly .....	15				
32	5.28.1149	Trimmer arm support .....	01				
33	5.11.1031	Smaller trimmer arm .....	01				
34	5.25.1546	Trimmer lock pin .....	01				
35	7.25.001	3/4" x 2.1/2" hex screw .....	04				
36	7.10.007	3/4" pressure washer.....	04				
37	7.25.016	3/4" hex nut .....	04				
38	7.25.436	3/4" x 5" hex screw .....	03				
39	5.11.1032	Busshing.....	01				

# RIGHT SIDE CHASSIS



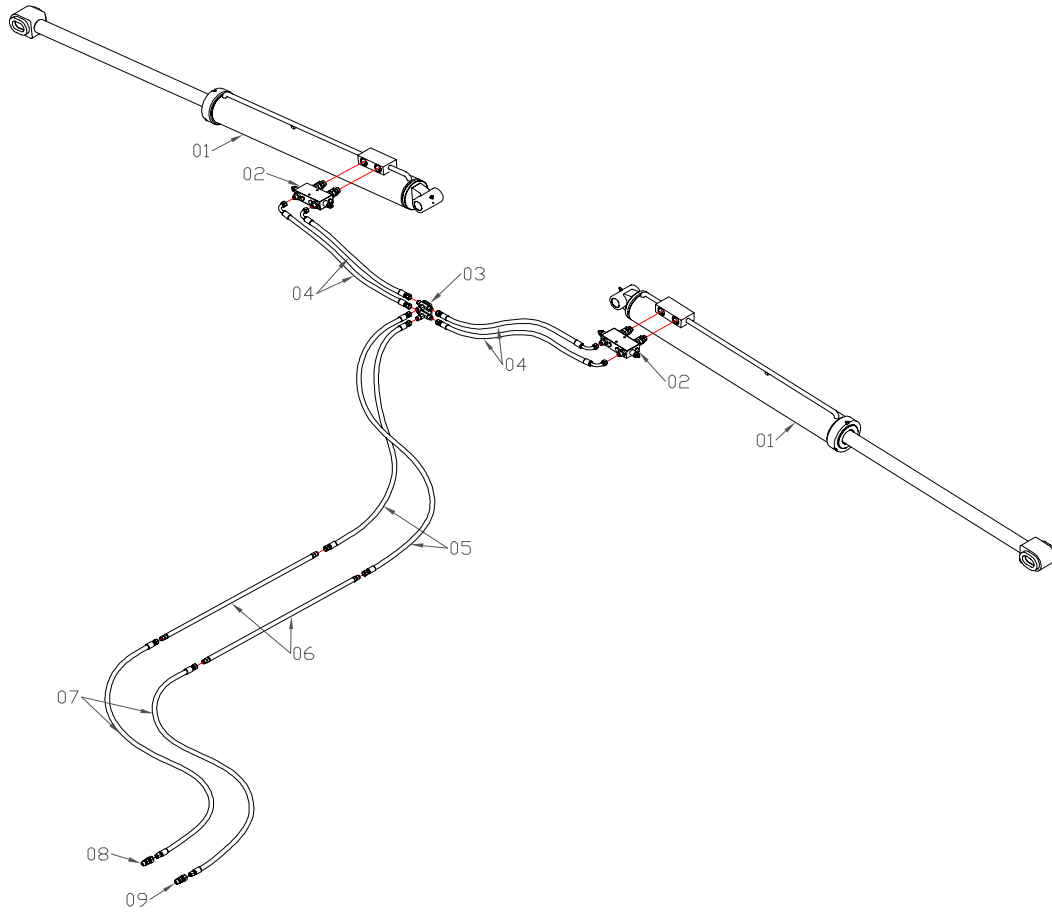
ITEM	CODE	DESCRIPTION	QTY.	ITEM	CODE	DESCRIPTION	QTY.
01	5.12.2129	Right side chassis.....	01				
02	5.12.2152	Right side wheelset hydraulic cylinder.....	01				
03	5.25.1534	Ø 38,1 x 269mm pin .....	05				
04	5.10.239	Ø 39,7 x Ø 70mm washer.....	05				
05	7.12.045	5/16" x 2.1/2" cotter pin .....	05				
06	5.11.971	Wheeler's right arm .....	01				
07	7.25.222	3/4" x 6" hex screw.....	01				
08	7.25.176	3/4" self-locking nut .....	05				
09	5.14.962	Wheel axle.....	01				
10	5.12.2156	Wheel hub .....	01				
11	5.25.322	Complete tire 600/20 - 22,5.....	01				
12	5.25.1496	Hitch pin.....	01				
13	5.11.960	Busshing.....	02				
14	5.10.496	Ø 27 x Ø 110mm washer.....	01				
15	7.10.009	1" pressure washer.....	01				
16	7.25.696	1" x 2" hex screw .....	01				
17	5.25.1535	Ø 50,8 x x Ø 38,1 x 365mm pin.....	03				
18	5.10.149	Ø 40 x Ø 75mm washer.....	05				
19	7.25.118	1.1/2" self-locking nut .....	05				
20	5.12.2147	Hydraulic cylinder of the crusher roller .....	01				
21	5.25.1536	Ø 50,8 x Ø 38,1 x 285mm pin.....	02				
22	5.12.2151	Hydraulic cylinder .....	01				
23	5.27.373	Right mounted crushing roller.....	01				
24	5.25.1569	Side frame lock pin .....	01				
25	5.10.356	Ø 26 x Ø 45mm washer.....	01				
26	7.29.389	Locking R.....	01				
27	5.11.973	Topper bushing .....	01				
28	7.16.017	1/8" straight grease fitting.....	03				
29	5.12.2212	Front disk assembly.....	13				
30	5.12.2214	Rear disk assembly .....	15				
31	5.11.975	Wear busshing.....	02				
32	5.21.166	Disk holder limiter and guide .....	40				

### HYDRAULIC SYSTEM HEADER / REST



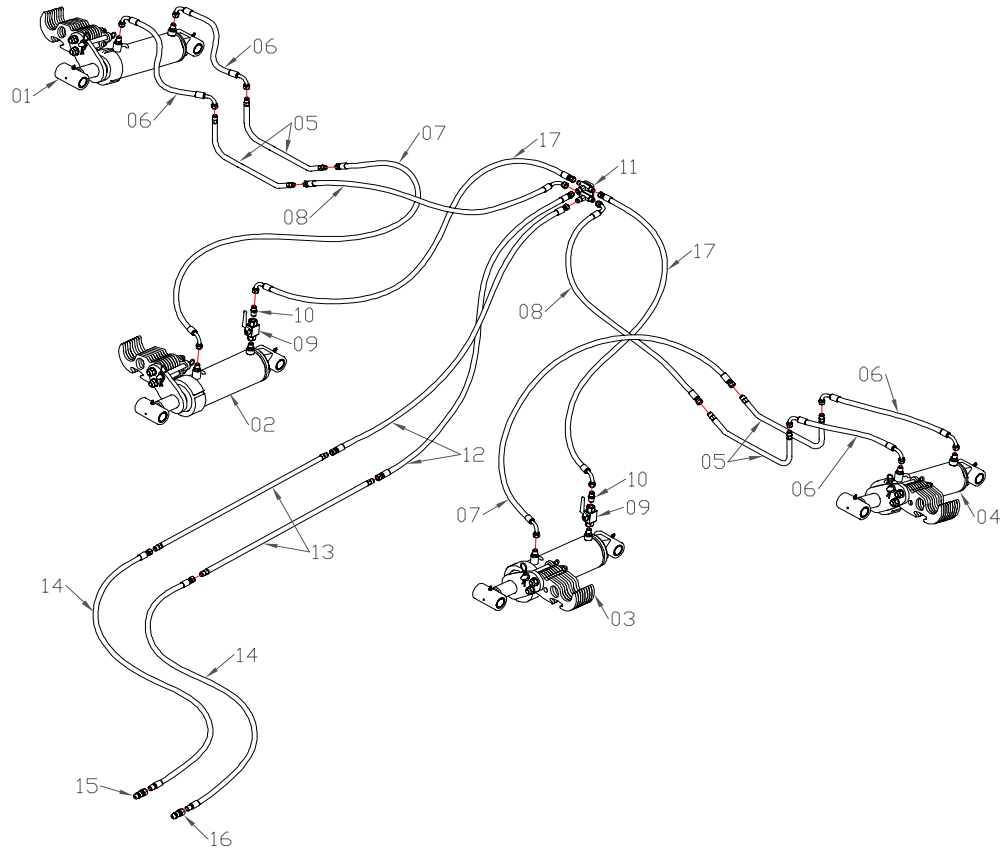
ITEM	CODE	DESCRIPTION	QTY.
01	5.12.2150	Header hydraulic cylinder .....	02
02	5.20.026	Safety valve .....	02
03	7.22.800	Hose 3/8" x 880mm .....	04
04	5.23.165	3/4 JIC nipple - 03 connections .....	02
05	5.29.1320	Hydraulic tube - 1519mm .....	02
06	7.22.796	Hose 3/8" x 5080mm .....	02
07	7.14.330	Hydraulic quick coupling 1/2" NPT - Green - negative .....	01
08	7.14.329	Hydraulic quick coupling 1/2" NPT - Green - positive .....	01
09	5.12.2154	Rest hydraulic cylinder .....	01
10	7.31.114	Ball valve .....	01
11	5.23.161	1/2" NPT x 3/4" o'ring nipple .....	01
12	7.22.797	Hose 3/8" x 3200mm .....	01
13	7.22.798	Hose 3/8" x 2930mm .....	01
14	7.14.328	Hydraulic quick coupling 1/2" NPT - Black - negative .....	01
15	7.14.337	Hydraulic quick coupling 1/2" NPT - Black - positive .....	01

## HYDRAULIC SYSTEM SIDE CHASSIS



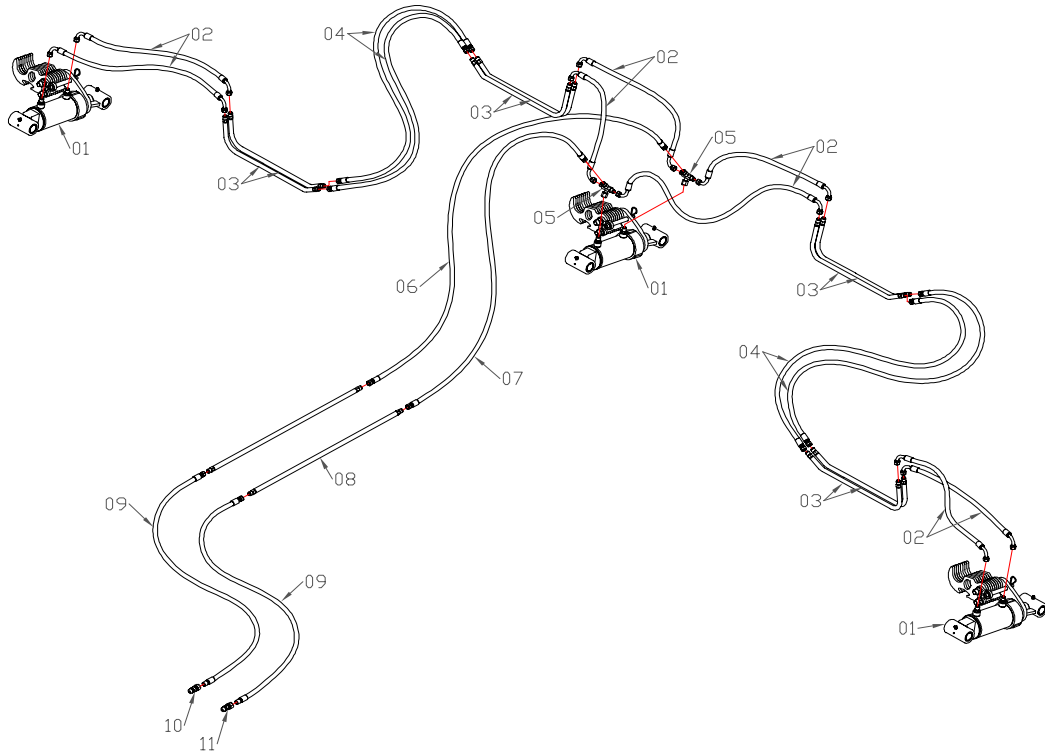
ITEM	CODE	DESCRIPTION	QTY.
01	5.12.2151	Side chassis hydraulic cylinder.....	02
02	5.20.026	Safety valve.....	02
03	5.12.1916	Dual connection.....	01
04	7.22.014	Hose 3/8" x 1500mm.....	04
05	7.22.795	Hose 3/8" x 2180mm.....	02
06	5.29.1321	Hydraulic tube - 2054mm.....	02
07	7.22.796	Hose 3/8" x 5080mm.....	02
08	7.14.332	Hydraulic quick coupling 1/2" NPT - Yellow - negative.....	01
09	7.14.331	Hydraulic quick coupling 1/2" NPT - Yellow - positive.....	01

## HYDRAULIC SYSTEM WHEEL SET



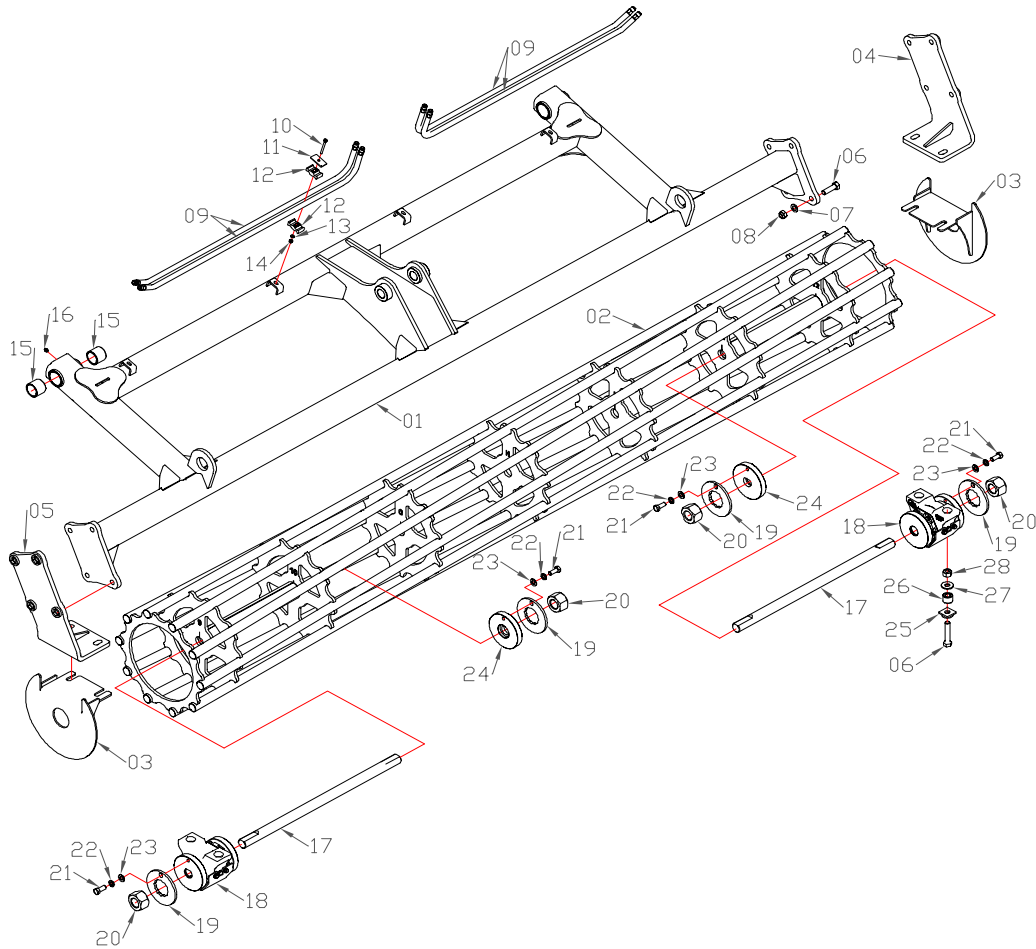
ITEM	CODE	DESCRIPTION	QTY.
01	5.12.2152	Right side wheelset hydraulic cylinder.....	01
02	5.12.2148	Right hydraulic cylinder of the central wheel set .....	01
03	5.12.2149	Central wheelset left hydraulic cylinder .....	01
04	5.12.2153	Left side wheelset hydraulic cylinder .....	01
05	5.29.1287	Hydraulic tube - 1272mm .....	04
06	7.22.790	Hose 3/8" x 900mm .....	04
07	7.22.799	Hose 3/8" x 1700mm .....	02
08	7.22.792	Hose 3/8" x 3000mm .....	02
09	7.31.114	Ball valve .....	02
10	5.23.161	1/2" NPT x 3/4" o'ring nipple.....	02
11	5.12.1916	Dual connection.....	01
12	7.22.795	Hose 3/8" x 2180mm .....	02
13	5.29.1322	Hydraulic tube - 2019mm .....	02
14	7.22.796	Hose 3/8" x 5080mm .....	02
15	7.14.334	Hydraulic quick coupling 1/2" NPT - Red - negative.....	01
16	7.14.333	Hydraulic quick coupling 1/2" NPT - Red - positive .....	01
17	7.22.779	Hose 3/8" x 1100mm .....	02

## HYDRAULIC SYSTEM CRUSHING ROLLER



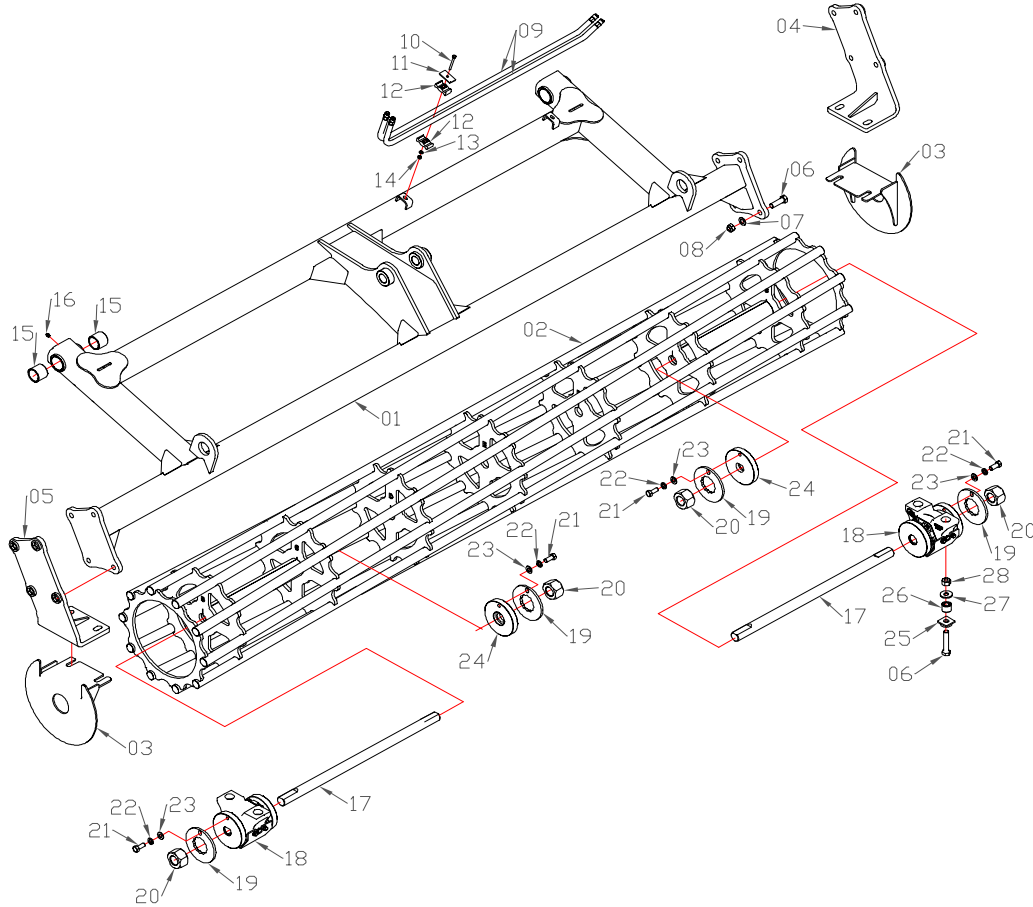
ITEM	CODE	DESCRIPTION	QTY.
01	5.12.2147	Hydraulic cylinder of the crusher roller .....	03
02	7.22.790	Hose 3/8" x 900mm .....	06
03	5.29.1287	Hydraulic tube - 1272mm .....	08
04	7.22.791	Hose 3/8" x 860mm .....	04
05	5.23.164	3/4 JIC nipple - 04 connections .....	02
06	7.22.793	Hose 3/8" x 3030mm .....	01
07	7.22.794	Hose 3/8" x 2830mm .....	01
08	5.29.1323	Hydraulic tube - 2139mm .....	02
09	7.22.796	Hose 3/8" x 5080mm .....	02
10	7.14.336	Hydraulic quick coupling 1/2" NPT - Brown - negative .....	01
11	7.14.335	Hydraulic quick coupling 1/2" NPT - Brown - positive.....	01

## CENTRAL CRUSHING ROLLER (5.27.366)



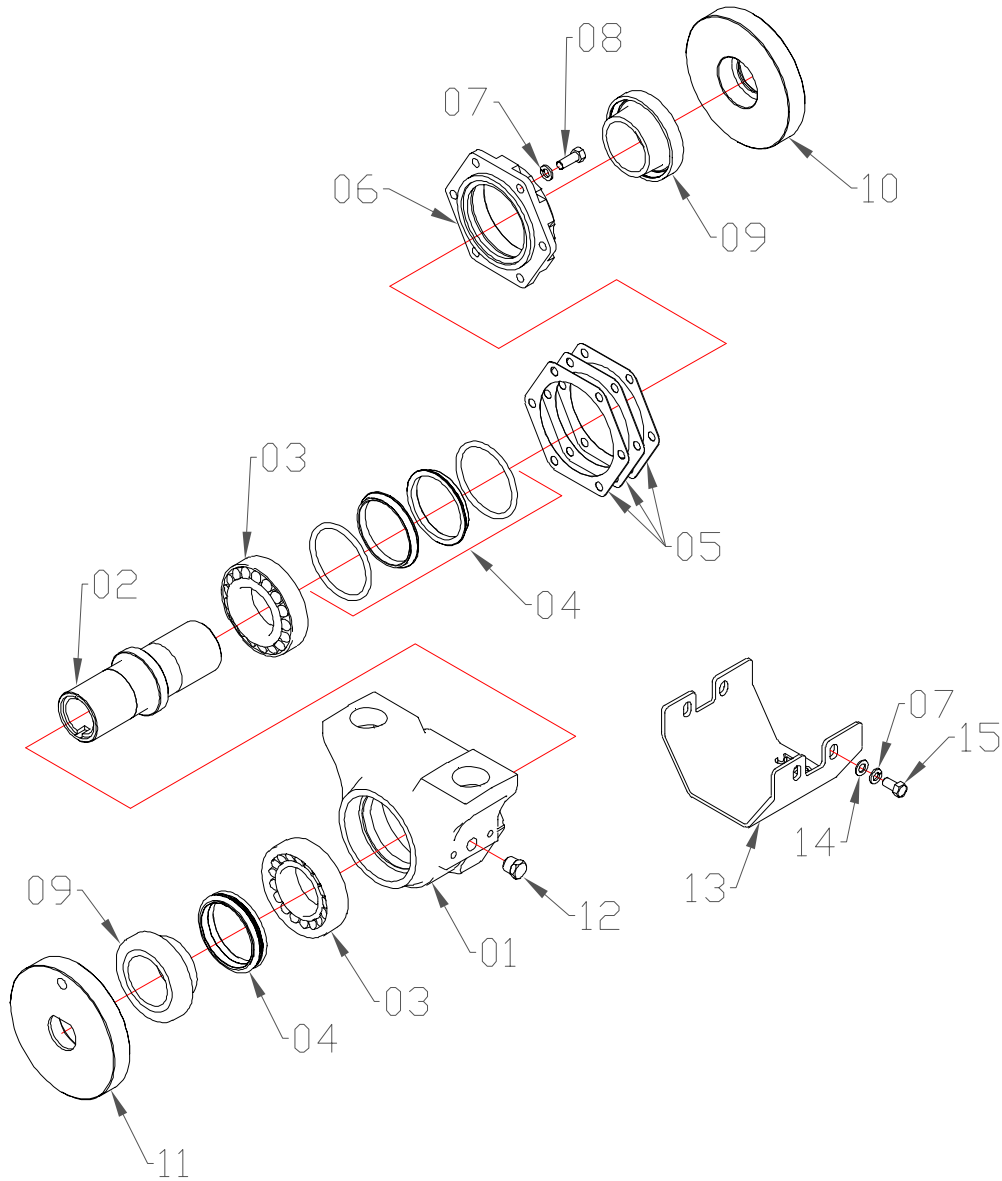
ITEM	CODE	DESCRIPTION	QTY.
01	5.28.1144	Rear support for the crusher roller.....	01
02	5.27.371	Crushing roller .....	01
03	5.25.1540	Side protection.....	02
04	5.28.1148	Left support for fixing.....	01
05	5.28.1147	Right support for fixing.....	01
06	7.25.001	3/4" x 2.1/2" hex screw .....	12
07	7.10.026	3/4" flat washer .....	08
08	7.25.176	3/4" self-locking nut .....	08
09	5.29.1287	Hydraulic tube - 1272mm .....	04
10	7.25.159	5/16" x 3" hex screw .....	04
11	5.25.1107	Double model board .....	04
12	7.10.051	Cable Tie .....	04
13	7.10.003	5/16" pressure washer.....	04
14	7.25.012	5/16" hex nut .....	04
15	5.11.978	Bushing.....	04
16	7.16.017	1/8" straight grease fitting.....	02
17	5.14.961	Ø 1.5/8" x 873mm axle .....	02
18	5.22.269	Bearing .....	02
19	5.29.1236	Nut lock.....	04
20	7.25.517	1.5/8" hex nut .....	04
21	7.25.468	5/8" x 1.1/2" hex screw .....	04
22	7.10.006	5/8" pressure washer.....	04
23	7.10.025	5/8" flat washer .....	04
24	5.10.520	Axle thrust washe .....	02
25	5.29.1166	Screw lock .....	04
26	5.11.865	Bushing.....	04
27	5.10.085	Ø 20 x Ø 48mm washer.....	04
28	7.25.016	3/4" hex nut .....	04

## SIDE CRUSHING ROLLER (5.27.374- LEFT / 5.27.373 - RIGHT)



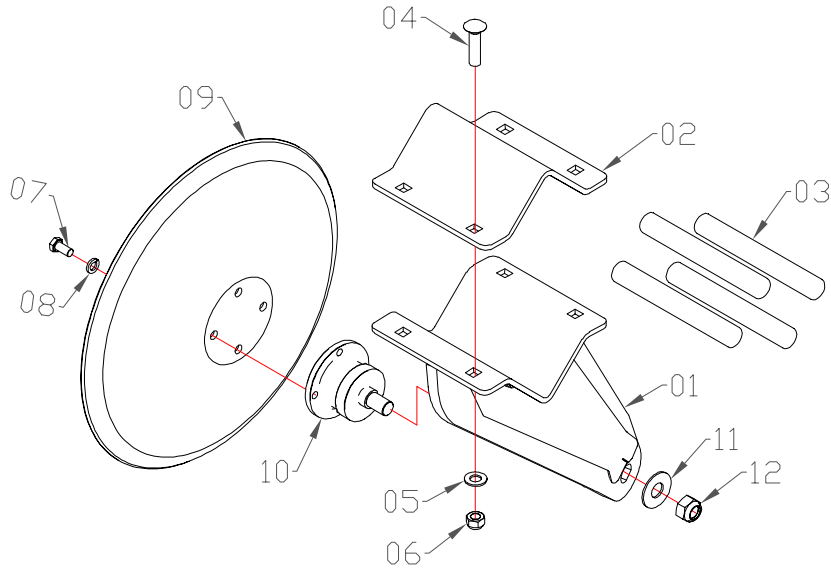
ITEM	CODE	DESCRIPTION	QTY.
01	5.28.1159	Left rear support for the crusher roller .....	01
01	5.28.1160	Right rear support for the crusher roller.....	01
02	5.27.367	Crushing roller .....	02
03	5.25.1540	Side protection.....	04
04	5.28.1148	Left support for fixing .....	02
05	5.28.1147	Right support for fixing.....	02
06	7.25.001	3/4" x 2.1/2" hex screw .....	24
07	7.10.026	3/4" flat washer .....	16
08	7.25.176	3/4" self-locking nut .....	16
09	5.29.1287	Hydraulic tube - 1272mm .....	04
10	7.25.159	5/16" x 3" hex screw .....	04
11	5.25.1107	Double model board .....	04
12	7.10.051	Cable Tie .....	04
13	7.10.003	5/16" pressure washer.....	04
14	7.25.012	5/16" hex nut .....	04
15	5.11.978	Bushing.....	08
16	7.16.017	1/8" straight grease fitting .....	04
17	5.14.961	Ø 1.5/8" x 873mm axle .....	04
18	5.22.269	Bearing .....	04
19	5.29.1236	Nut lock.....	08
20	7.25.517	1.5/8" hex nut .....	08
21	7.25.468	5/8" x 1.1/2" hex screw .....	08
22	7.10.006	5/8" pressure washer.....	08
23	7.10.025	5/8" flat washer .....	08
24	5.10.520	Axle thrust washe .....	04
25	5.29.1166	Screw lock .....	08
26	5.11.865	Bushing.....	08
27	5.10.085	Ø 20 x Ø 48mm washer.....	08
28	7.25.016	3/4" hex nut .....	08

### BEARING (5.22.269)

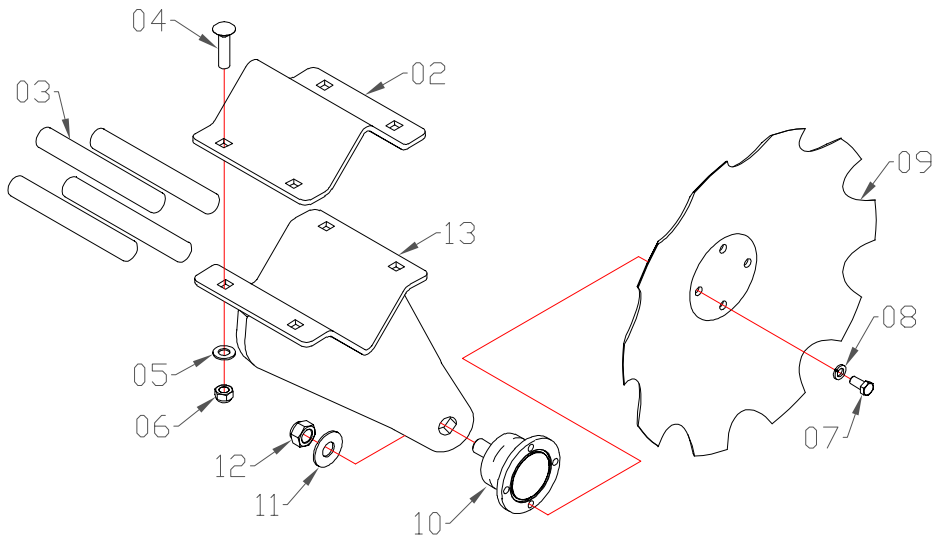


ITEM	CODE	DESCRIPTION	QTY.
01	5.12.1840	Bearing hub .....	01
02	5.14.418	Bearing shaft .....	01
03	7.27.003	Bearing .....	02
04	7.27.148	Retainer .....	02
05	7.19.008	Vellumoid gasket 0.3mm .....	03
06	5.29.404	Hub hub cover .....	01
07	7.10.004	3/8" pressure washer .....	10
08	7.25.033	3/8" x 1" hex screw .....	06
09	5.11.328	Retainer holder bushing .....	01
10	5.10.506	Thrust washer .....	01
11	5.10.507	Threaded thrust washer .....	01
12	5.11.322	3/8" plug .....	02
13	5.12.806	Bearing protection cover .....	01
14	7.10.023	3/8" flat washer .....	04
15	7.25.067	3/8" x 3/4" hex screw .....	04

### REAR DISK ASSEMBLY (5.12.2214)



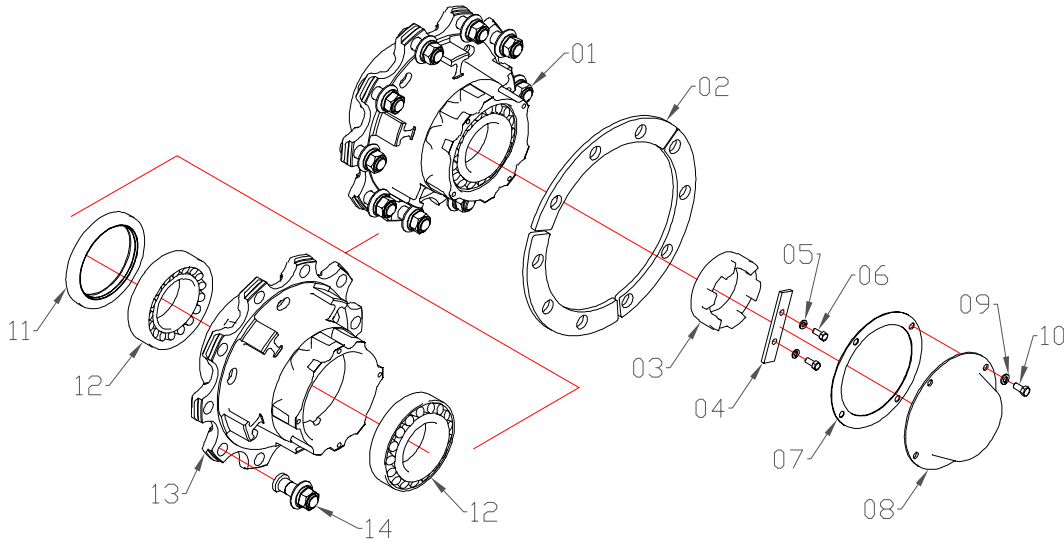
### FRONT DISK ASSEMBLY (5.12.2212)



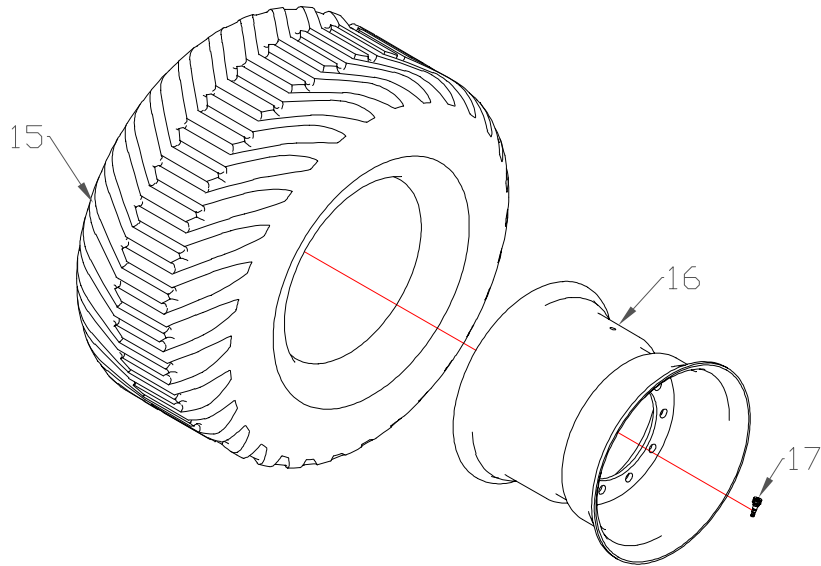
ITEM	CODE	DESCRIPTION	QTY.
01	5.28.1151	Rear disk support .....	01
02	5.25.1549	Profile V .....	02
03	7.22.777	Spring .....	08
04	7.25.649	5/8" x 2.1/2" French screw .....	08
05	7.10.025	5/8" flat washer .....	08
06	7.25.229	5/8" self-locking nut. ....	08
07	7.25.1030	M12 x 20mm hex screw.....	08
08	7.10.160	M12 pressure washer .....	02
09	TAB1	Disk.....	02
10	7.30.009	Hub bearing unit .....	02
11	5.10.519	Ø 23 x Ø 55mm washer.....	02
12	7.25.1024	M22 self-locking nut.....	02
13	5.28.1150	Front disk support.....	01

TAB 1 - DISK TABLE			
Model	Straight	Cropped	
Measures			
20" x 6mm	11.01.030	11.02.056	
22" x 6mm	11.01.031	11.02.057	

**WHEEL HUB (5.12.2156)**

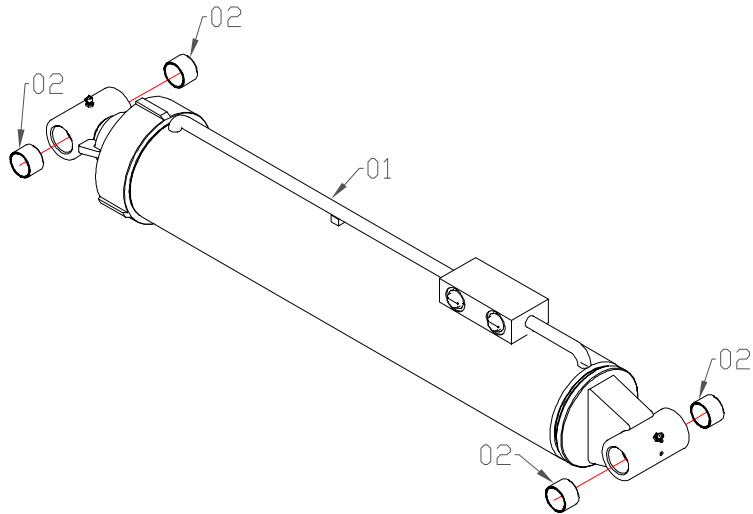


**TIRE (5.25.322)**

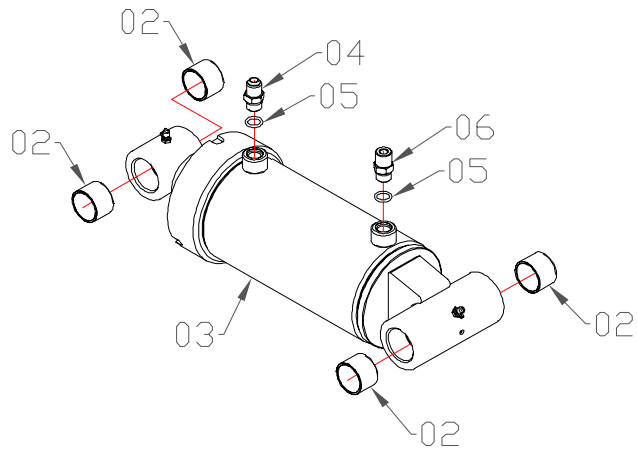


ITEM	CODE	DESCRIPTION	QTY.
01	5.12.366	Complete wheel hub.....	01
02	5.10.004	Compensation washer.....	01
03	7.25.078	Castle nut .....	01
04	5.29.003	Nut lock.....	01
05	7.10.003	5/16" pressure washer.....	02
06	7.25.068	5/16" x 3/4" hex screw .....	02
07	7.19.001	Board .....	01
08	7.12.048	Hubcap .....	01
09	7.10.004	3/8" pressure washer.....	04
10	7.25.067	3/8" x 3/4" hex screw .....	04
11	7.27.010	Retainer .....	01
12	7.27.002	Bearing .....	02
13	7.12.010	Wheel hub .....	01
14	7.25.130	Smallest wheel bolt.....	10
15	7.25.232	Tire 600/50 - 22.5 .....	01
16	7.27.023	Wheel .....	01
17	7.11.011	Tire valve .....	01

### CENTER CHASSIS CYLINDER (5.12.2150)

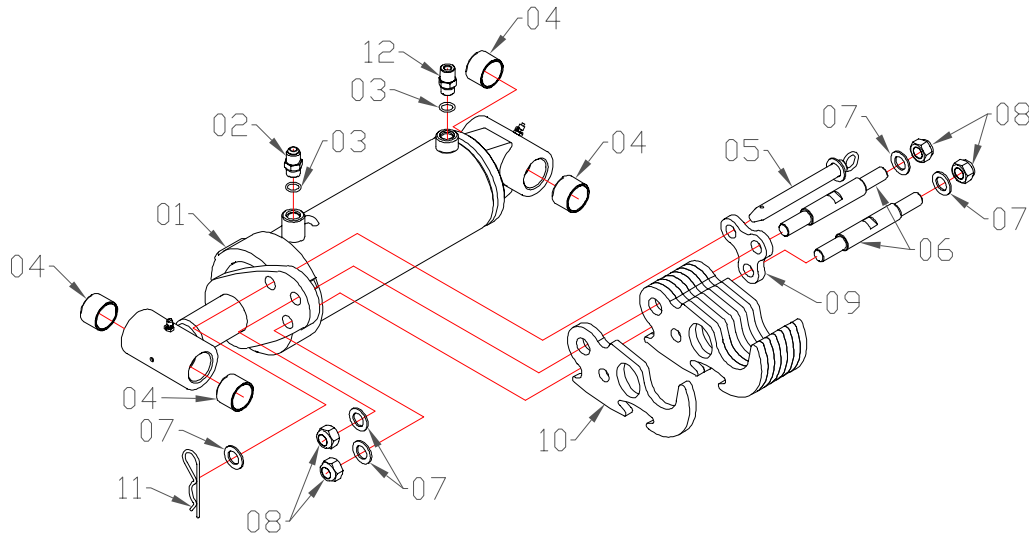


### REST CYLINDER (5.12.2154)

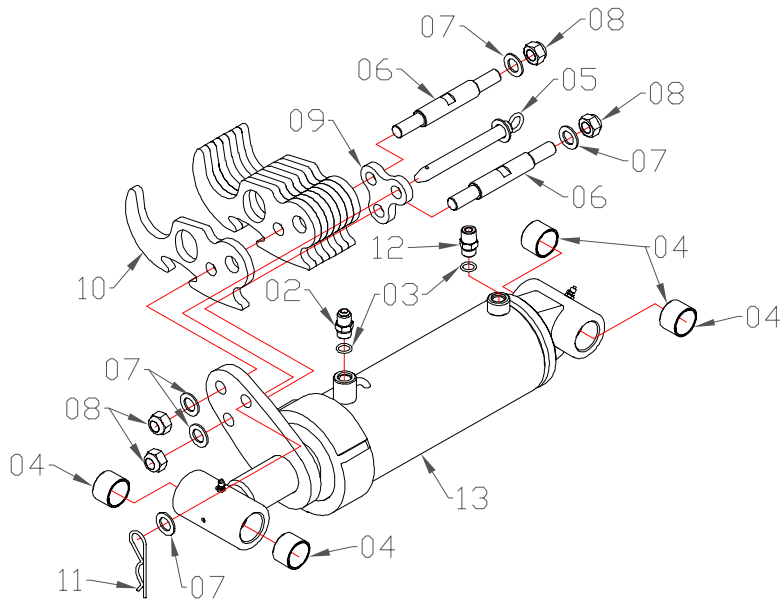


ITEM	CODE	DESCRIPTION	QTY.
01	7.12.1102	Hydraulic cylinder .....	01
02	7.11.008	Hinge Pin Bushing .....	08
03	7.12.1106	Hydraulic cylinder .....	01
04	5.23.054	3/4" o'ring x 3/4" JIC nipple .....	01
05	7.10.372	Sealing ring.....	02
06	5.23.161	1/2" NPT x 3/4" o'ring nipple.....	01

**LEFT CYLINDER OF THE CENTRAL WHEEL SET (5.12.2149)**

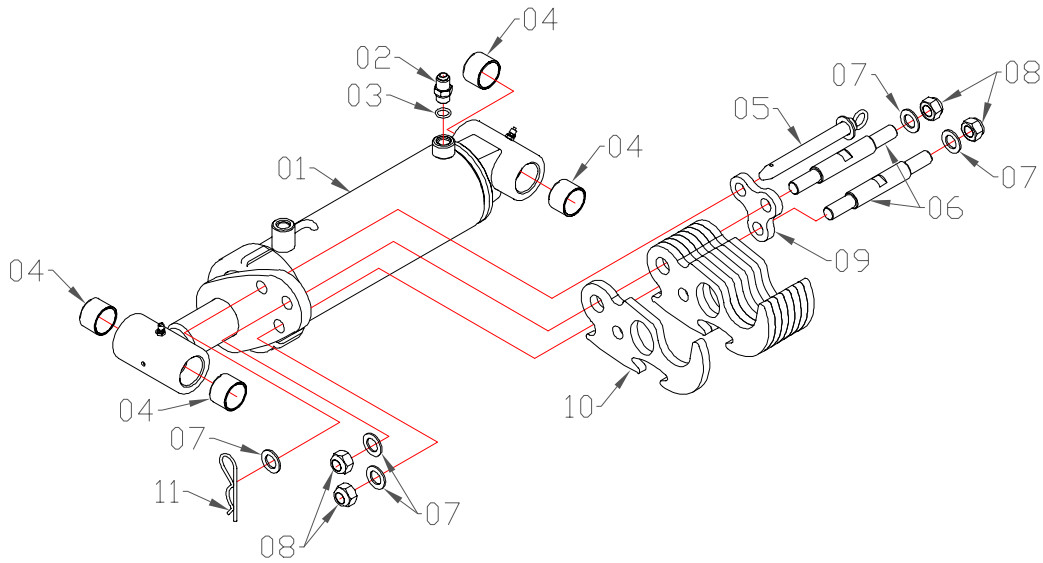


**RIGHT CYLINDER OF THE CENTRAL WHEEL (5.12.2148)**

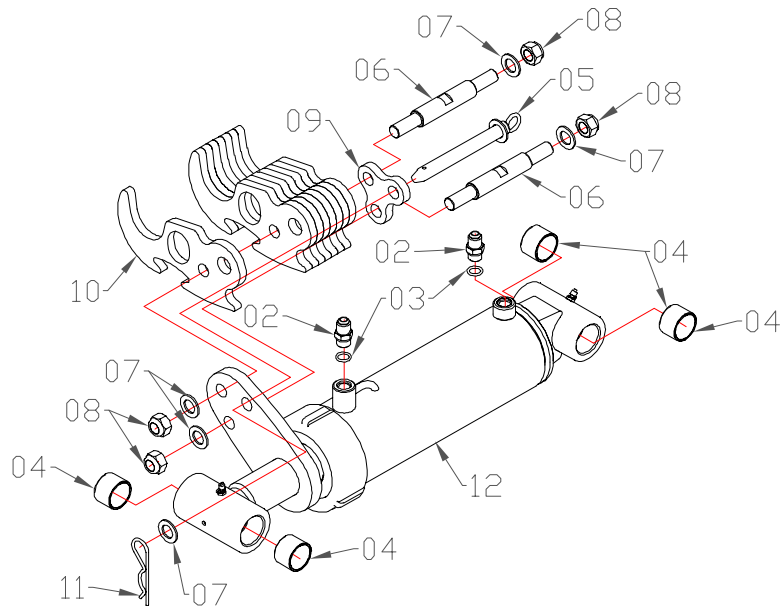


ITEM	CODE	DESCRIPTION	QTY.
01	7.12.1101	Hydraulic cylinder .....	01
02	5.23.054	3/4" o'ring x 3/4" JIC nipple .....	02
03	7.10.372	Sealing ring.....	04
04	7.11.008	Hinge Pin Bushing.....	08
05	5.25.1583	Stopper lock pin.....	02
06	5.14.975	Threaded shaft .....	04
07	7.10.026	3/4" flat washer .....	10
08	7.25.161	3/4" self-locking nut .....	08
09	5.25.1592	Union plate .....	02
10	5.29.1257	Topper.....	16
11	7.29.009	Locking R.....	02
12	5.23.161	1/2" NPT x 3/4" o'ring nipple.....	02
13	7.12.1100	Hydraulic cylinder .....	01

### LEFT SIDE WHEEL CYLINDER (5.12.2153)

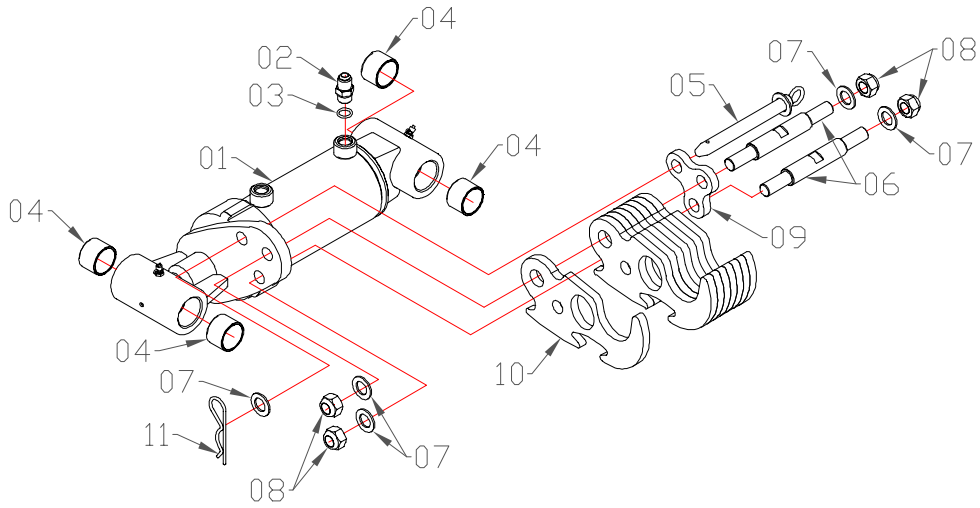


### RIGHT SIDE WHEEL CYLINDER (5.12.2152)



ITEM	CODE	DESCRIPTION	QTY.
01	7.12.1105	Hydraulic cylinder .....	01
02	5.23.054	3/4" o'ring x 3/4" JIC nipple .....	04
03	7.10.372	Sealing ring.....	04
04	7.11.008	Hinge Pin Bushing .....	08
05	5.25.1583	Stopper lock pin.....	02
06	5.14.975	Threaded shaft .....	04
07	7.10.026	3/4" flat washer .....	10
08	7.25.161	3/4" self-locking nut .....	08
09	5.25.1592	Union plate .....	02
10	5.29.1257	Topper.....	16
11	7.29.009	Locking R.....	02
12	7.12.1104	Hydraulic cylinder .....	01

**CYLINDER OF THE CRUSHER ROLLER (5.12.2147)**

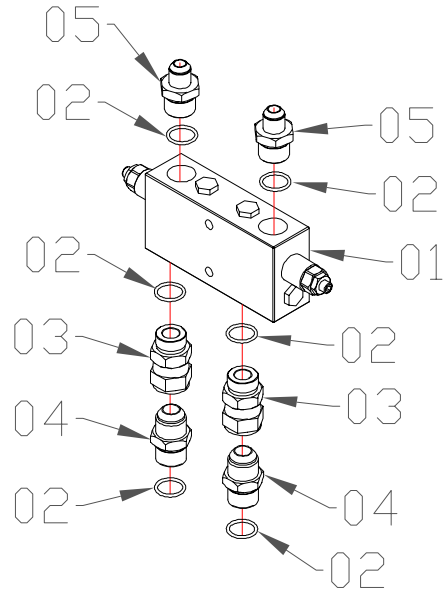


**CENTER CHASSIS CYLINDER (5.12.2151)**

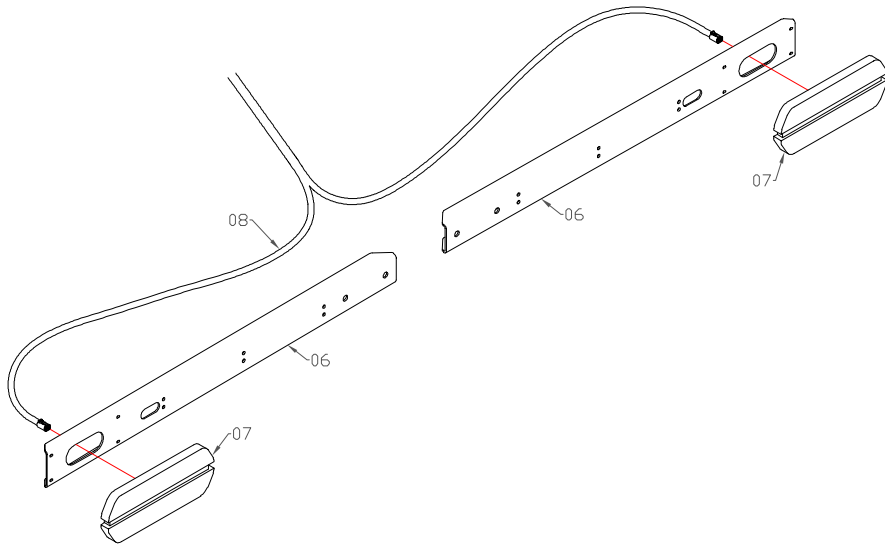


ITEM	CODE	DESCRIPTION	QTY.
01	7.12.1089	Hydraulic cylinder .....	01
02	5.23.054	3/4" o'ring x 3/4" JIC nipple .....	02
03	7.10.372	Sealing ring.....	02
04	7.11.008	Hinge Pin Bushing.....	06
05	5.25.1583	Stopper lock pin.....	01
06	5.14.975	Threaded shaft .....	02
07	7.10.026	3/4" flat washer .....	05
08	7.25.161	3/4" self-locking nut .....	04
09	5.25.1592	Union plate .....	01
10	5.29.1257	Topper.....	08
11	7.29.009	Locking R.....	01
12	7.12.1103	Hydraulic cylinder .....	01

### SAFETY VALVE KIT (5.20.026)

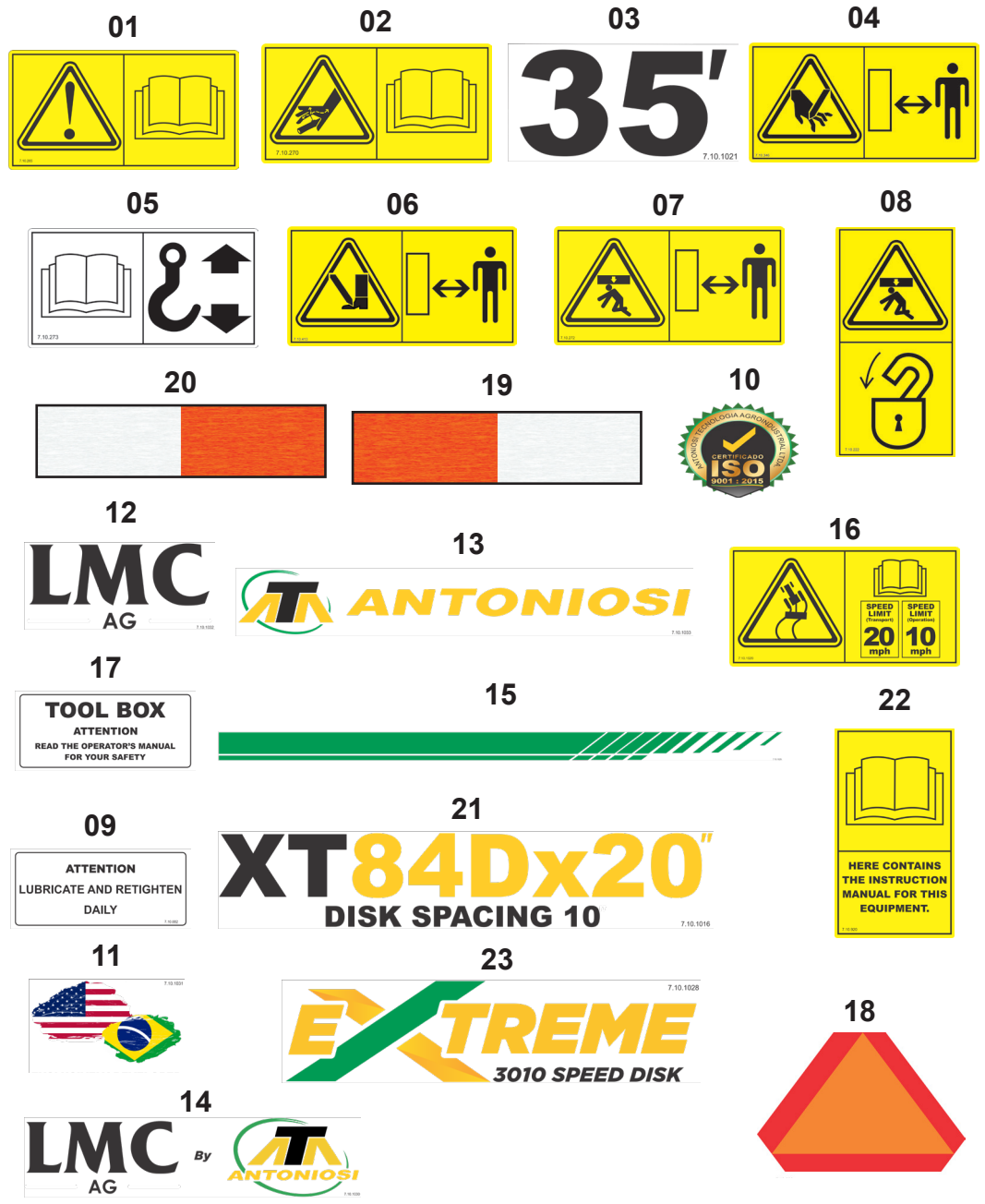


### LIGHTING SYSTEM



ITEM	CODE	DESCRIPTION	QTY.
01	7.31.133	Counterbalance valve.....	01
02	7.10.017	O'ring seal .....	06
03	7.23.097	Safety valve adapter nipple .....	02
04	5.23.044	1.1/16" JIC x 1.1/16" o'ring nipple .....	02
05	5.23.065	3/4" JIC x 1.1/16" o'ring nipple .....	02
06	5.28.1230	Flashlight holder .....	02
07	7.21.070	Left lantern.....	01
08	7.21.071	Right lantern .....	01
09	7.12.1127	Lantern whip .....	01

STICKERS



ITEM	CODE	DESCRIPTION	QTY.
01	7.10.265	Sticker - Read instruction manual.....	02
02	7.10.270	Sticker - Attention hydraulic hose .....	02
03	7.10.1021	Sticker - 35 Feet .....	02
04	7.10.346	Sticker - Attention cutting disk .....	02
05	7.10.273	Sticker - Cargo hitch information .....	16
06	7.10.413	Sticker - Attention cutting disc - Foot.....	02
07	7.10.272	Sticker - Attention keep your distance .....	04
08	7.10.222	Sticker - Attention: lower the support foot.....	04
09	7.10.882	Sticker - Lubricate / Retighten .....	03
10	7.10.671	Sticker - ISO 9001 Logo .....	02
11	7.10.1031	Sticker - Brazil Flag - United States.....	04
12	7.10.1032	Sticker - LMC AG.....	02
13	7.10.1033	Sticker - Logo ATA .....	01
14	7.10.1030	Sticker - Logo LMC by ATA.....	02
15	7.10.1029	Sticker - Faixa verde.....	02
16	7.10.1020	Sticker - Speed limit.....	02
17	7.10.887	Sticker - Toolbox .....	01
18	7.10.390	Sticker - Reflective triangle - Machine in motion .....	01
19	7.10.159	Sticker - Red/White Reflective Strip .....	06
20	7.10.450	Sticker - Reflective strip white / red .....	06
21	7.10.1016	Sticker - XT84D X 20 X 10 .....	02
21	7.10.1017	Sticker - XT84D X 22 X 10 .....	02
22	7.10.920	Sticker - Manual Container.....	01
23	7.10.1028	Sticker - Extreme 3010 Speed Disk.....	02

CODE	PAGES	CODE	PAGES	CODE	PAGES	CODE	PAGES	CODE	PAGES	CODE	PAGES	CODE	PAGES
11.01.030	P19 S09	5.11.972	P09 S06	5.12.2214	P11 S30	5.25.1535	P07 S40	5.28.1230	P07 S34	7.10.025	P17 S23	7.12.045	P05 S32
11.01.031	P19 S09	5.11.973	P09 S27	5.12.2239	P05 S08	5.25.1535	P09 S17	5.28.1230	P25 S06	7.10.025	P19 S05	7.12.045	P07 S19
11.02.056	P19 S09	5.11.973	P11 S27	5.12.2259	P05 S01	5.25.1535	P11 S17	5.29.003	P20 S04	7.10.026	P16 S07	7.12.045	P09 S05
11.02.057	P19 S09	5.11.975	P07 S20	5.12.366	P20 S01	5.25.1536	P07 S25	5.29.1166	P16 S25	7.10.026	P17 S07	7.12.045	P11 S05
5.10.004	P20 S02	5.11.975	P09 S28	5.12.806	P18 S13	5.25.1536	P09 S21	5.29.1166	P17 S25	7.10.026	P22 S07	7.12.048	P20 S08
5.10.085	P16 S27	5.11.975	P11 S31	5.13.216	P05 S49	5.25.1536	P11 S21	5.29.1182	P07 S12	7.10.026	P23 S07	7.12.1024	P05 S28
5.10.085	P17 S27	5.11.977	P05 S34	5.13.224	P05 S17	5.25.1540	P16 S03	5.29.1236	P16 S19	7.10.026	P24 S07	7.12.1089	P24 S01
5.10.149	P07 S26	5.11.978	P16 S15	5.14.418	P18 S02	5.25.1540	P17 S03	5.29.1236	P17 S19	7.10.051	P16 S12	7.12.1100	P22 S13
5.10.149	P09 S18	5.11.978	P17 S15	5.14.961	P16 S17	5.25.1546	P09 S34	5.29.1237	P05 S04	7.10.051	P17 S12	7.12.1101	P22 S01
5.10.149	P11 S18	5.12.1840	P18 S01	5.14.961	P17 S17	5.25.1549	P19 S02	5.29.1243	P07 S21	7.10.1016	P26 S21	7.12.1102	P21 S01
5.10.239	P05 S31	5.12.1841	P05 S38	5.14.962	P07 S28	5.25.1550	P05 S36	5.29.1244	P05 S26	7.10.1017	P26 S21	7.12.1103	P24 S12
5.10.239	P07 S18	5.12.1916	P13 S03	5.14.962	P09 S09	5.25.1551	P05 S37	5.29.1257	P22 S10	7.10.1020	P26 S16	7.12.1104	P23 S12
5.10.239	P09 S04	5.12.1916	P14 S11	5.14.962	P11 S09	5.25.1552	P05 S30	5.29.1257	P23 S10	7.10.1021	P26 S03	7.12.1105	P23 S01
5.10.239	P11 S04	5.12.2129	P11 S01	5.14.975	P22 S06	5.25.1569	P09 S24	5.29.1257	P24 S10	7.10.1028	P26 S23	7.12.1106	P21 S03
5.10.356	P09 S25	5.12.2130	P09 S01	5.14.975	P23 S06	5.25.1569	P11 S24	5.29.1287	P14 S05	7.10.1029	P26 S15	7.12.1127	P25 S09
5.10.356	P11 S25	5.12.2131	P07 S01	5.14.975	P24 S06	5.25.1574	P05 S40	5.29.1287	P15 S03	7.10.1030	P26 S14	7.14.328	P12 S14
5.10.371	P05 S22	5.12.2147	P07 S23	5.14.987	P05 S20	5.25.1583	P22 S05	5.29.1287	P16 S09	7.10.1031	P26 S11	7.14.329	P12 S08
5.10.459	P05 S06	5.12.2147	P09 S20	5.20.026	P12 S02	5.25.1583	P23 S05	5.29.1287	P17 S09	7.10.1032	P26 S12	7.14.330	P12 S07
5.10.459	P09 S40	5.12.2147	P11 S20	5.20.026	P13 S02	5.25.1583	P24 S05	5.29.1292	P05 S14	7.10.1033	P26 S13	7.14.331	P13 S09
5.10.496	P05 S42	5.12.2147	P15 S01	5.21.166	P07 S42	5.25.1592	P22 S09	5.29.1318	P09 S41	7.10.159	P26 S19	7.14.332	P13 S08
5.10.496	P07 S05	5.12.2148	P07 S15	5.21.166	P09 S45	5.25.1592	P23 S09	5.29.1319	P05 S50	7.10.160	P19 S08	7.14.333	P14 S16
5.10.496	P09 S14	5.12.2148	P14 S02	5.21.166	P11 S32	5.25.1592	P24 S09	5.29.1320	P12 S05	7.10.222	P26 S08	7.14.334	P14 S15
5.10.496	P11 S14	5.12.2149	P07 S16	5.22.269	P16 S18	5.25.1635	P09 S43	5.29.1321	P13 S06	7.10.265	P26 S01	7.14.335	P15 S11
5.10.506	P18 S10	5.12.2149	P14 S03	5.22.269	P17 S18	5.25.322	P07 S30	5.29.1322	P14 S13	7.10.270	P26 S02	7.14.336	P15 S10
5.10.507	P18 S11	5.12.2150	P05 S45	5.23.044	P25 S04	5.25.322	P09 S11	5.29.1323	P15 S08	7.10.272	P26 S07	7.14.337	P12 S15
5.10.519	P19 S11	5.12.2150	P07 S33	5.23.054	P21 S04	5.25.322	P11 S11	5.29.404	P18 S06	7.10.273	P26 S05	7.16.017	P05 S47
5.10.520	P16 S24	5.12.2150	P12 S01	5.23.054	P22 S02	5.27.366	P07 S24	7.10.003	P16 S13	7.10.346	P26 S04	7.16.017	P07 S41
5.10.520	P17 S24	5.12.2151	P07 S39	5.23.054	P23 S02	5.27.367	P17 S02	7.10.003	P17 S13	7.10.372	P21 S05	7.16.017	P09 S29
5.10.527	P09 S44	5.12.2151	P09 S22	5.23.054	P24 S02	5.27.368	P07 S02	7.10.003	P20 S05	7.10.372	P22 S03	7.16.017	P11 S28
5.11.1004	P05 S03	5.12.2151	P11 S22	5.23.065	P25 S05	5.27.371	P16 S02	7.10.004	P18 S07	7.10.372	P23 S03	7.16.017	P16 S16
5.11.1005	P05 S02	5.12.2151	P13 S01	5.23.161	P12 S11	5.27.373	P11 S23	7.10.004	P20 S09	7.10.372	P24 S03	7.16.017	P17 S16
5.11.1009	P05 S24	5.12.2152	P11 S02	5.23.161	P14 S10	5.27.374	P09 S23	7.10.006	P16 S22	7.10.390	P26 S18	7.19.001	P20 S07
5.11.1010	P05 S25	5.12.2152	P14 S01	5.23.161	P21 S06	5.28.1144	P16 S01	7.10.006	P17 S22	7.10.413	P26 S06	7.19.008	P18 S05
5.11.1031	P09 S33	5.12.2153	P09 S02	5.23.161	P22 S12	5.28.1147	P16 S05	7.10.007	P05 S10	7.10.450	P26 S20	7.21.070	P25 S07
5.11.1032	P09 S39	5.12.2153	P14 S04	5.23.164	P15 S05	5.28.1147	P17 S05	7.10.007	P09 S36	7.10.671	P26 S10	7.21.071	P25 S08
5.11.1033	P09 S42	5.12.2154	P05 S29	5.23.165	P12 S04	5.28.1148	P16 S04	7.10.009	P05 S43	7.10.882	P26 S09	7.22.014	P13 S04
5.11.322	P18 S12	5.12.2154	P12 S09	5.25.1107	P16 S11	5.28.1148	P17 S04	7.10.009	P07 S06	7.10.887	P26 S17	7.22.777	P19 S03
5.11.328	P18 S09	5.12.2156	P07 S29	5.25.1107	P17 S11	5.28.1149	P09 S32	7.10.009	P09 S15	7.10.920	P26 S22	7.22.779	P14 S17
5.11.865	P16 S26	5.12.2156	P09 S10	5.25.1496	P07 S03	5.28.1150	P19 S13	7.10.009	P11 S15	7.11.008	P05 S33	7.22.790	P14 S06
5.11.865	P17 S26	5.12.2156	P11 S10	5.25.1496	P09 S12	5.28.1151	P19 S01	7.10.017	P25 S02	7.11.008	P21 S02	7.22.790	P15 S02
5.11.960	P05 S41	5.12.2212	P07 S37	5.25.1496	P11 S12	5.28.1153	P07 S08	7.10.023	P18 S14	7.11.008	P22 S04	7.22.791	P15 S04
5.11.960	P07 S04	5.12.2212	P09 S30	5.25.1534	P05 S46	5.28.1155	P05 S35	7.10.024	P05 S13	7.11.008	P23 S04	7.22.792	P14 S08
5.11.960	P09 S13	5.12.2212	P11 S29	5.25.1534	P07 S17	5.28.1159	P17 S01	7.10.024	P07 S10	7.11.008	P24 S04	7.22.793	P15 S06
5.11.960	P11 S13	5.12.2214	P07 S38	5.25.1534	P09 S03	5.28.1160	P17 S01	7.10.025	P07 S13	7.11.011	P20 S17	7.22.794	P15 S07
5.11.971	P11 S06	5.12.2214	P09 S31	5.25.1534	P11 S03	5.28.1172	P05 S11	7.10.025	P16 S23	7.12.010	P20 S13	7.22.795	P13 S05

